

Fact Book



2011

Table of Contents

Section I: General Information.....	1
Section II: Enrollment	14
Section III: Program Enrollment	23
Section IV: Program Licensure.....	26
Section V: Graduates	28
Section VI: Financial Aid	36
Section VII: Faculty and Staff	38
Section VIII: Library Resources	42
Section IX: Continuing Education and Economic Development	46

SECTION I

GENERAL INFORMATION

SECTION I: GENERAL INFORMATION

Introduction

The Office of Institutional Advancement is pleased to present the **Southeastern Technical College (STC) *Fact Book***.

This book is intended as a single, readily accessible, consistent source of information about Southeastern Technical College. It is a summary of institutional data compiled to capture the 2011 fiscal year. The Fact Book provides pertinent facts and figures valuable to administrators, faculty, students, and the public.

An aspiration of this process is to make available increasingly more useful information on an annual basis. To help in accomplishing this, we welcome your comments and suggestions for the Fact Book.

Eide Nesmith
Director of Institutional Advancement
enesmith@southeasterntech.edu

SECTION I: GENERAL INFORMATION

Mission Statement

Southeastern Technical College, a unit of the Technical College System of Georgia, provides an innovative, educational environment for student learning through traditional and distance education delivery methods focused on building a well-educated, globally competitive workforce for Southeastern Georgia.

The College fulfills its mission through:

- associate degree, diploma, and technical certificate of credit programs;
- adult education;
- continuing education; and
- customized training and services.

Vision

Southeastern Technical College will be recognized as an educational leader in Southeastern Georgia. The College will deliver quality, student-centered, and accessible postsecondary education and training. The College will empower students for success, cultivating innovative and economically thriving communities and enterprises.

Southeastern Technical College Values:

- Integrity, honesty, openness, mutual respect, and personal excellence.
- Continuous improvement.
- Making a difference in teaching and learning.
- A strong, visionary Administration.
- A qualified and committed Faculty and Staff.
- Community Partnerships and citizenship.
- Safe, secure, and attractive campuses and facilities.
- Time together for planning.
- Positive attitudes and teamwork.
- Accessible and affordable, quality programs and services.
- Professional Development.
- Communication.
- Fairness, equality, and diversity.
- Workforce development.
- Marketing our uniqueness for a competitive advantage.
- Technological advancement.

SECTION I: GENERAL INFORMATION

Service Delivery Area and Campus Locations



SECTION I: GENERAL INFORMATION

Southeastern Technical College serves the geographic area of Candler, Emanuel, Jenkins, Johnson, Montgomery, Tattnall, Toombs, and Treutlen counties, which are located in southeast Georgia. The college currently offers programs at the following twelve locations:

The Vidalia Campus is located at 3001 East First Street in Vidalia, Georgia. This location is along U.S. Highway 280 and is approximately 2.5 miles from U.S. Highway 1.

- Building 1: Administration Building (1990) 84,256 sq. ft.
Houses offices of administrative and support staff, Industrial programs, General Education classes, COS, Bookstore, and Library
- Building 2: Gillis Building (2003) 45,075 sq. ft.
Houses Allied Health programs and Business programs
- Building 3: Health Sciences Annex (2007) 10,000 sq. ft.
Houses Dental Hygiene program and has space for a future Medical program
- Building 4: Automotive Technology Training Center and Southeastern Early College and Career Academy (2011) 35,262 sq. ft.
Houses Automotive Technology and Career Academy.

The Swainsboro Campus is located at 346 Kite Road in Swainsboro, Georgia. This location is along GA Highway 57 and is approximately 2 miles from U.S. Highway 1 and 35 miles from the Vidalia Campus.

- Building 1: (1996) 20,000 sq. ft.
Houses Administrative offices, Student Affairs, Allied Health classrooms/labs (PN, MA & PHL)
- Building 2: (1963-1979) 39,611 Sq. ft.
Houses Academic Affairs offices, Business classrooms/labs (ACC BAT, CIS, General Education & CJ), Library Resource Center, Career Center, technical classrooms/labs & ECM)
- Building 3: (1979) 10,290 Sq. ft.
Houses COS, Student Center, Bookstore, Facilities, Security & Polycom
- Building 4: (1989) 5,499 Sq. ft.
Houses Child Care Center
- Building 5: (1955) 1,200 Sq. ft.
Houses Information Services/Technical Support
- Building 6: (2003) 24,000 Sq. ft.
Houses Technology Center, Economic Development offices, Technical Division classrooms/labs (Flex Lab, F&G/FOR, & WLD)
- Building 7: (1995) 2,700 Sq. ft.

SECTION I: GENERAL INFORMATION

Houses Maintenance/Storage

Building 8: (1964) 10,020 Sq. ft.
Houses Classrooms and record storage

Building 9: (2003) 3,000 Sq. ft. Greenhouse

Building 10: (1950) 6,899 Sq. ft.
Houses maintenance and is a warehouse storage building

Southeastern Tech's Glennville Campus is located at 211 S. Tillman Street in Glennville, Georgia. The campus is located approximately one block from U.S. Highway 301. The distance to the Glennville Campus from the Vidalia Campus is 43.4 miles.

Building 1: Tattnall Institute Building (1916 – major renovations completed in 2004)
13,544 Sq. ft.
Houses offices, classroom space, library, and the Glennville-Tattnall Museum

Building 2: Allied Health Building (major renovations completed in 2004) 5,209 Sq. Ft.
Houses Medical Assisting and Practical Nursing programs

Building 3: Tattnall Technology Center (2004) 7,995 Sq. ft.
Houses Adult Education and Continuing Education classes

Building 4: Cosmetology Building (2011) 5,600 Sq. ft.
Houses classrooms, offices, and Cosmetology Lab

The Economic Development Center houses continuing education, business and industry training, and adult education programs. (2002) with 26,855 Sq. ft. In addition to these functions, the facility also serves as a regional operations center for the Technical College System of Georgia's Quick Start program. The center is located at 100-A Brinson Road in Vidalia. The Economic Development Center is located approximately one block off of U.S. Highway 280, and is 3.7 miles from Southeastern Tech's Vidalia Campus.

The Johnson County Extension Center is located at 21 Cedar Creek Drive in Wrightsville, Georgia. This location is approximately 1 mile southeast of downtown Wrightsville off of GA Highway 57 and is 25 miles from the Swainsboro Campus. (2007) 4,179 Sq. ft. It serves as an extension location for selected credit courses. Extension Campus Houses Credit Classrooms/labs, offices, and Continuing Education classes

The Jim L. Gillis Workforce Development Center is located at 429 Parkview Drive Soperton, Georgia. This location is approximately 2 miles north of Soperton off GA Highway 15 and is 20 miles from the Vidalia Campus (2001) 4,000 Sq. ft.. This center provides adult education classes and services to residents of Treutlen County. It also serves as an extension location for selected credit courses.

The Candler County Center is located at 25 West Daniel Street in Metter, Georgia 25 miles from the Swainsboro Campus. (2001) with 6,100 Sq. ft. This center provides adult education

SECTION I: GENERAL INFORMATION

classes and services to residents of Candler County. It also serves as an extension location for selected credit courses.

The Jenkins County Center is located at 210 Hendrix Street in Millen, Georgia 35 miles from the Swainsboro Campus (1995) with 3,500 Sq. ft. This center provides adult education classes and services to residents of Jenkins County. It also serves as an extension location for selected credit courses.

The Johnson County Center is located at 37 Georgia Avenue in Wrightsville, Georgia, 30 miles from the Swainsboro Campus (1999) with 2,400 Sq. ft. This center provides adult education classes and services to residents of Johnson County.

The Tattnall-Reidsville Adult Learning Center is located at 123 Tattnall Street in Reidsville, just off of U.S. Highway 280 (2001) with 4,591 Sq. ft. This center provides adult literacy classes and services to residents of northern Tattnall County. The building is owned and maintained by Tattnall County for Southeastern Tech's use. The center is located approximately 17 miles from the college's Vidalia Campus.

The Montgomery County Adult Literacy Center is located at 251 S. Fulton Street in Mt. Vernon. This center provides adult literacy services to residents of Montgomery County. This facility is owned and maintained by Montgomery County for Southeastern Tech's use in 2002 with 4,176 Sq. ft. The center is conveniently located just off of U.S. Highway 280 and is approximately 14.5 miles from the college's Vidalia Campus.

The Commercial Truck Driving Facility is located on Harris Industrial Boulevard in Vidalia in the Toombs Industrial Park in 2003 with 2,688 Sq. ft. The property is located a short 1.6 miles from Southeastern Technical College's Vidalia Campus. It houses the Commercial Truck Driving program.

SECTION I: GENERAL INFORMATION

Institutional Goals

The goals that will help us realize our vision and mission are to:

Guarantee student access and the opportunity for success at all levels.

Objectives:

1. Assure the quality of instruction and support services to enhance student learning.
2. Expand adult education opportunities to improve educational advancement.
3. Expand dual enrollment opportunities and other partnerships with local secondary school systems.
4. Expand options and collaborations with business and industry, other post-secondary institutions, and other state agencies.

Build the local workforce for economic vitality.

Objectives:

1. Provide excellence in economic development and community services to support attracting business /industry and creating/ expanding/ retaining jobs.
2. Support certified Work Ready and Entrepreneur Friendly programs.
3. Expand credit program offerings to match workforce needs/strategic industries.

Improve the visibility, recognized value, and support of Technical Education, Adult Education, and Workforce Training.

Objectives:

1. Maintain comprehensive marketing plan.
2. Maintain SACS/COC and appropriate program accreditations.
3. Build private financial support and increase alternative funding sources.

Enhance the College's organizational development in terms of educational delivery, facilities and equipment, and internal workforce.

Objectives:

1. Maximize efficiency and effectiveness in the delivery of quality programs and services.
2. Implement a comprehensive facilities and capital outlay plan.
3. Develop and implement plans to assure College safety, security, and business continuity.
4. Maintain innovative, cutting-edge technology and equipment to improve College operations and student learning.
5. Expand staff development and leadership training for personnel.
6. Improve faculty and staff recruitment and retention and increase the full-time faculty percentage.

SECTION I: GENERAL INFORMATION

History

During the 1987 session, the Georgia Legislature appropriated \$45,000 for the preliminary plans for a technical institute to be located in Southeast Georgia. During the 1988 session, an additional appropriation of \$5,410,000 was approved for the construction of the new institute. Other state funds totaling \$445,000 were added to the project. Additionally, the citizens of Toombs County, through a local option sales tax, contributed \$1,689,000 to the project for the construction of a 776-seat auditorium. The total funds invested in the project amounted to \$7,553,000.

Construction of Southeastern Technical Institute began in 1988. A local Board of Directors was sworn into office in July 1989. By November 1989, the Southeastern Technical Institute Foundation was incorporated. Although the facilities were still under construction, the first diploma program, Practical Nursing began in January 1990. Upon completion of construction in 1990, a dedication ceremony was held. Governor Joe Frank Harris delivered the dedicatory address.

October 1, 1990, marked the official opening of the new facility. Forty-six students enrolled in four diploma programs: Practical Nursing, Information and Office Technology, Accounting, and Cosmetology. An additional 32 students enrolled in Developmental Studies. In March 1991, nine Practical Nursing students graduated in Southeastern Tech's first commencement exercise. The institute remained constant in adding more programs to respond to the needs of the community.

In 1992, Southeastern Tech established a campus in Glennville. After having leased facilities in Glennville for a number of years, on June 14, 1994 the City of Glennville gave Southeastern Tech three buildings and the land the campus buildings are situated. Also of significance to the Glennville Campus was the award of a Community Block Development Grant to Tattnall County for the construction of a Technology Center. This facility is located on property adjacent to the Glennville campus and is utilized by Southeastern Technical College for adult literacy training, continuing education, and business and industry training.

On February 5, 1998, the State Board of the Technical College System of Georgia authorized the purchase of a building located in Vidalia to be used as the College's Economic Development Center. The building had been leased by Southeastern Technical College since 1994. Renovation of this facility was completed in October 2002. The facility also houses regional operations for the Technical College System of Georgia's Quick Start program, an organization which serves the training needs of new and expanding industries.

In 2000, the school had a 43% increase in enrollment over 1999 and a 257% increase in the continuing education department in two years. Beyond growth was the tremendous positive effect the institution has experienced through the development of a more technically skilled workforce.

On December 7, 2000, Southeastern Technical Institute officially changed its name to Southeastern Technical College. The name change was a facet of Governor Roy Barnes' Education Reform Bill. This also allowed STC to offer associate degrees and receive formula-funding based on enrollment from the State of Georgia.

SECTION I: GENERAL INFORMATION

Southeastern Technical College celebrated ten years of service to Toombs, Tattnall, and Montgomery counties while promoting the theme, "A Decade of Difference." Southeastern Technical College continued to increase enrollment and add new programs.

In 2001, the Toombs County Development Authority conveyed 15.92 acres of land in the Toombs County Industrial Park to Southeastern Technical College for the purpose of establishing a Commercial Truck Driving facility. The Commercial Truck Driving Facility was completed in June 2003.

A landmark occasion for adult literacy efforts occurred in September 2001 with the opening of the Reidsville-Tattnall County Adult Literacy Center. The facility, funded by a Community Development Block Grant (CDBG), provided a permanent home for adult literacy programs and services in Reidsville.

Construction began in November 2001 on the Medical Technology Building on the main campus. Due to unprecedented enrollment growth, funds were appropriated to construct an addition to this project.

In FY 2001, Southeastern Technical College served over 1900 students in credit programs alone. The College grew to more than 50 programs in business, health, technical and industrial fields. Online classes became available at Southeastern Technical College through the Georgia Virtual Technical Connection. Barriers of time and distance diminished as obstacles that could hinder students from receiving the education they desire and deserve.

Following the success in establishing a permanent home for adult literacy programs and services in Reidsville was the establishment of the Montgomery County Adult Literacy Center in Mt. Vernon. The construction of this facility was also established through a CDGB to Montgomery County. The Center opened in June 2002.

During FY 2002, the College had a major impact on the community as literacy classes were now able to be offered at four different sites. As previously stated, construction began on the regional medical technology building; construction started on the Glennville Campus renovations; STC added additional parking on the Vidalia campus, as well as completed the final phases for the new Economic Development Center in Vidalia.

Southeastern Technical College has experienced phenomenal growth during its relatively brief existence. Space constraints on the Vidalia campus were alleviated in January 2004 with the official opening of the Medical Technology Building.

The hallmark of the success of Southeastern Technical College is the strong local support from its service area. This modern facility stands as a finely sculptured monument to the economic growth and development of the entire region. Adult students, regardless of sex, race, age, color, religion, national origin, marital status, academic or economic disadvantage or disability may capitalize on the enhanced opportunities offered by technical education. Technical education has clearly become a desirable, attractive alternative for education for the citizens of Georgia.

In January 2008, Commissioner Ron Jackson of the Technical College System of Georgia charged a taskforce to measure the feasibility of merging two technical colleges as the first of

SECTION I: GENERAL INFORMATION

several mergers across the state. In August 2008, a plan to merge the first two colleges was approved. At its September 2008 meeting, the State Board of Technical and Adult Education determined that merger strategies were necessary throughout the state and gave approval to proceed with the mergers proposed by the Technical College System of Georgia.

Commissioner Jackson met with the Local Boards of Southeastern Technical College and Swainsboro Technical College to discuss their role during the merger process. Dr. Ray Perren, Assistant Commissioner of the TCSG, met with the college presidents to prioritize and outline the tasks before them. Southeastern and Swainsboro formed a combined Steering Committee of senior staff from both colleges to lead and manage the merger process.

Southeastern Technical College and Swainsboro Technical College have had a close working relationship since the opening of Southeastern Tech in 1990. In fact, Southeastern Tech was formed from Swainsboro Tech's service delivery area. The colleges are located only 32 miles apart; therefore, they often have transient students from one another and share many of the same community supporters, business partnerships and resources. They provide more than 15 similar programs, with many of the programs using the same books and instructional materials. The merger will provide benefits to the communities served by creating a strong, single presence with increased visibility, and a unified mission. The merged college will better utilize limited resources to be more responsive to the needs of business and industry. More efficient resource utilization will allow current programs to be expanded and free up resources to add new programs as needed in our continually changing economy. As one educational entity in the communities, the merged college will better serve the communities with stronger partnerships, decreased competition for resources and fundraising, elimination of duplication, and more visibility as a stronger institution. A merged institution would further enhance the programs and services provided to all communities served and broaden the opportunities in many areas.

On July 1, 2009, Swainsboro Technical College and Southeastern Technical College officially merged to form the new Southeastern Technical College, which will serve Candler, Emanuel, Jenkins, Johnson, Montgomery, Tattnall, Toombs, and Treutlen counties.

SECTION I: GENERAL INFORMATION

Accreditation/Certification/Licensure/Approval

Southeastern Technical College is a unit of the Technical College System of Georgia.

www.tcsg.edu

Southeastern Technical College is accredited by the Commission on Colleges of the Southern Association of Colleges and Schools to award Associate Degrees, Diplomas, and Technical Certificates of Credit. Contact the Commission on Colleges at 1866 Southern Lane, Decatur, GA 30033-4097 or call (404) 679-4500 for questions about the accreditation of Southeastern Technical College. www.sacscoc.org. *Inquiries such as admission requirements, financial aid, educational programs, etc., should be addressed directly to Southeastern Technical College and not to the Commission's office. Please direct all questions to: Southeastern Technical College, 3001 E. First Street, Vidalia, GA 30474, 912.538.3100, Fax 912-538-3156.*

- The Practical Nursing program is approved by the Board of Examiners of Licensed Practical Nurses for the State of Georgia, 237 Coliseum Drive, Macon, GA 31217-3858, (478) 207-2440. <http://sos.georgia.gov/plb/lpn/>
- The Certified Nurse Aide program is approved by the Georgia Health Partnership, 1455 Lincoln Parkway East, Suite 750, Atlanta, Georgia 30346-2200. Phone number is 678-527-3010 or 800-414-4358.
- The Medical Assisting Diploma Program is accredited by the [Commission on Accreditation of Allied Health Education Programs \(www.caahep.org\)](http://www.caahep.org) upon the recommendation of the Medical Assisting Education Review Board (MAERB). Commission on Accreditation of Allied Health Education Programs, 1361 Park Street, Clearwater, FL 33756. 727/210-2350
- The Early Childhood Care and Education Paraprofessional Training program is approved by the Georgia Professional Standards Commission, Two Peachtree Street, Suite 6000, Atlanta, GA 30303, (800) 869-7775. <http://www.gapsc.com/>
- The Child Care Center on the Swainsboro campus is recognized as a Center of Distinction by the Georgia Department of Early Care and Learning. <https://www.dec.al.ga.gov/>
- Southeastern Technical College is a Certified Cisco Network Academy. <http://www.cisco.com/web/learning/netacad/index.html>
- Southeastern Technical College is a Microsoft IT Academy. The IT Academy provides tools to train students on Microsoft technologies, help them succeed in school, and prepare them for the global economy. The program includes access to a variety of curricula and certifications, software licenses, and a range of instruction from computer basics to high-level programming and architecture. <http://www.microsoft.com/education/msitacademy/default.aspx>
- Emergency Medical Technician graduates are eligible to sit for the National Registry Intermediate Exam, Rocco V. Morando Building, 6610 Bush Blvd, P.O. Box 29233, Columbus, OH 43229, (614) 888-4484. www.nremt.org
- Advanced Emergency Medical Technician (AEMT) graduates are eligible to sit for the National Registry AEMT Exam, Rocco V. Morando Building, 6610 Bush Blvd, P.O. Box 29233, Columbus, OH 43229, (614) 888-4484. www.nremt.org

SECTION I: GENERAL INFORMATION

- EMS Professions graduates are eligible to sit for the National Registry Advanced Emergency Medical Technician (AEMT) Exam, Rocco V. Morando Building, 6610 Bush Blvd, P.O. Box 29233, Columbus, OH 43229, (614) 888-4484. www.nremt.org
- Paramedic Technology Paramedicine program graduates are eligible to sit for the Paramedic Exam of the National Registry of Emergency Medical Technicians (NREMT), Rocco V. Morando Building, 6610 Bush Blvd, P.O. Box 29233, Columbus, OH 43229, (614) 888-4484. www.nremt.org
- The Technical College System of Georgia's Cosmetology curriculum is approved by the Georgia State Board of Cosmetology, <http://sos.georgia.gov/plb/cosmetology/>. Graduates are eligible to take the Master Cosmetologist Licensure Exam.
- The Surgical Technology program is accredited by the Commission on Accreditation of Allied Health Education Programs (CAAHEP) upon recommendation of the Accreditation Review Council on Education in Surgical Technology and Surgical Assisting (ARC/STSA) (www.arcst.org). Graduates are eligible to take the National Certification Exam from the National Board for Surgical Technologist and Surgical Assistants (NBSTSA) CAAHEP, 1361 Park Street, Clearwater, FL 33756, (727) 210-1300. www.caahep.org ARC-ST - www.arcst.org
- The Radiologic Technology program is accredited by the Joint Review Committee on Education in Radiologic Technology (JRCERT), 20 North Wacker Drive, Suite 2850, Chicago, IL 60606-3182, (312) 704-5300, www.jrcert.org. Graduates are eligible to take the National Registry Examination sponsored by the American Registry of Radiologic Technologists.
- The Clinical Laboratory Technology program is accredited by the National Accrediting Agency for Clinical Laboratory Sciences (NAACLS), 5600 N. River Road, Suite 720, Rosemont, Illinois 60018-5119, (773) 714-8880. <http://www.naacls.org>
- The Pharmacy Technology program is accredited by the American Society of Health-System Pharmacists, 7272 Wisconsin Avenue, Bethesda, MD 20814, (301) 657-3000, www.ashp.org. Graduates are eligible to take the National Pharmacy Technician Certification Exam.
- The Dental Hygiene program is accredited by the Commission on Dental Accreditation (CODA) - American Dental Association (ADA). The Commission is a specialized accrediting body recognized by the United States Department of Education. The Commission on Dental Accreditation can be contacted at (312) 440-4653 or at 211 East Chicago Avenue, Chicago, IL 60611. <http://www.ada.org/prof/ed/accred/commission/index.asp> Graduates are eligible to take the ADA National Board Dental Hygiene Examination and the CRDTS National Dental Hygiene Examination.
- In addition, Southeastern Technical College is a member of the following organizations:
 - The American Association of Collegiate Registrars and Admissions Officers
 - The American Association of Community Colleges
 - The National Association of College and University Business Officers
 - The National Council on Student Development
 - The Council for Higher Education Accreditation

SECTION II

ENROLLMENT

SECTION II: ENROLLMENT

Credit Enrollment (Unduplicated)

Headcount, Credit Hours and FTE (Full-Time Equivalency)

		2009-10	2010-11
		FY10	FY11
Headcount	*	3243	3234
		FY10	FY11
Credit Hours		75662	76809
		FY10	FY11
FTE		1680	1706

Source: TCSG Data Center EOY Total Rpt

* Estimated - Banner boxes were not merged until after Sum 09

Enrollment and Credit Hours by Campus

Campus	2009-10		2010-11	
	FY10		FY11	
	* Enroll	Credit Hrs	Enroll	Credit Hrs
Vidalia	2,134	50,901	2,125	50,411
Swainsboro	1,021	23,626	1,084	25,272
Glennville	88	1,135	64	1,126
(Unduplicated) TOTAL	3,243	75,662	** 3,234	76,809

Source: TCSG Data Center DC#135

* Estimated - Banner boxes were not merged until after Sum 09

** Unduplicated numbers do not equal the sum. If a student was assigned more than one campus during the year, they will be reported for each campus.

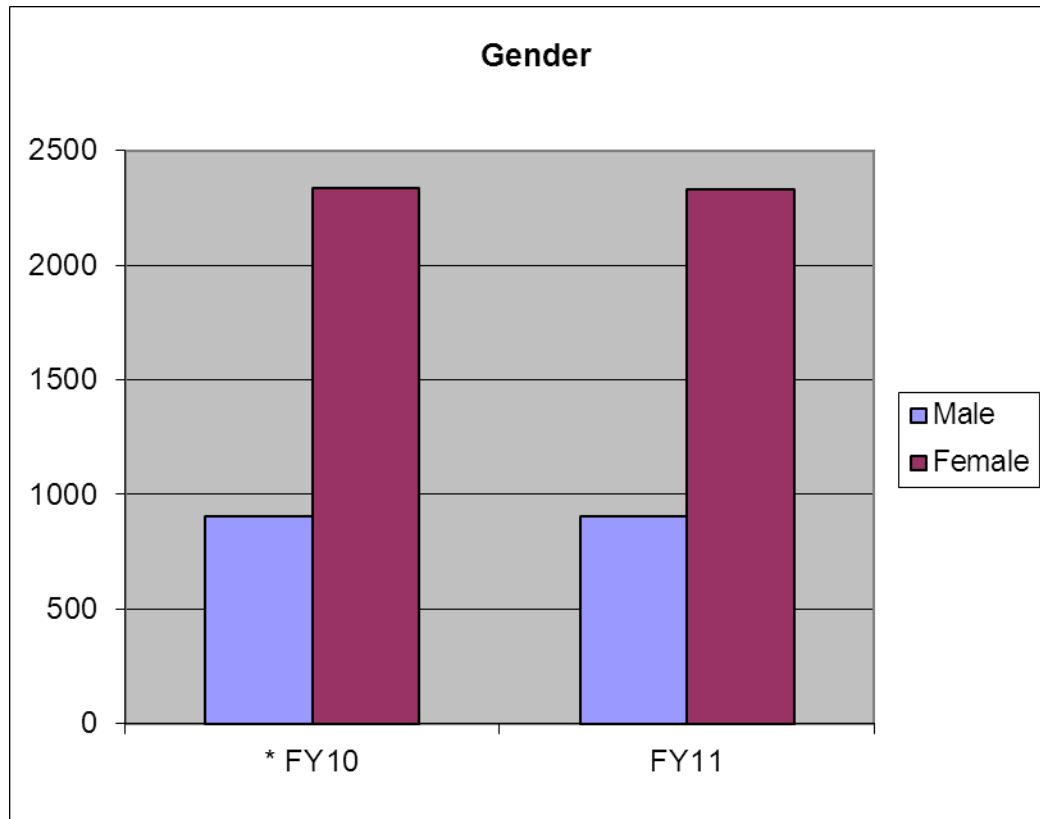
SECTION II: ENROLLMENT

Gender

	2009-10	2010-11
	* FY10	FY11
Male	905	905
Female	2338	2329
TOTAL	3243	3234

Source: TCSG Data Center EOY Gender Rpt

* Estimated - Banner boxes were not merged until after Sum 09



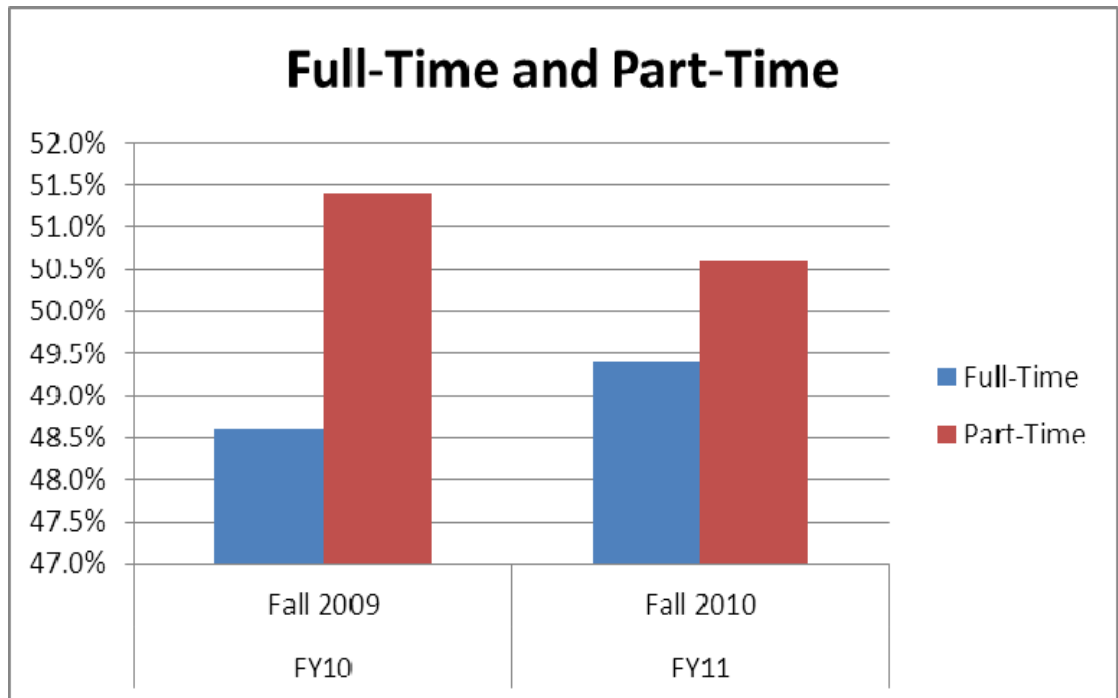
SECTION II: ENROLLMENT

Full-Time and Part-Time

(Based on Fall Quarter Enrollment)

	FY10	FY11
	Fall 2009	Fall 2010
Full-Time	48.6%	49.4%
Part-Time	51.4%	50.6%
TOTAL	100.0%	100.0%

Source: TCSG Data Center EOQ FTPT Rpt



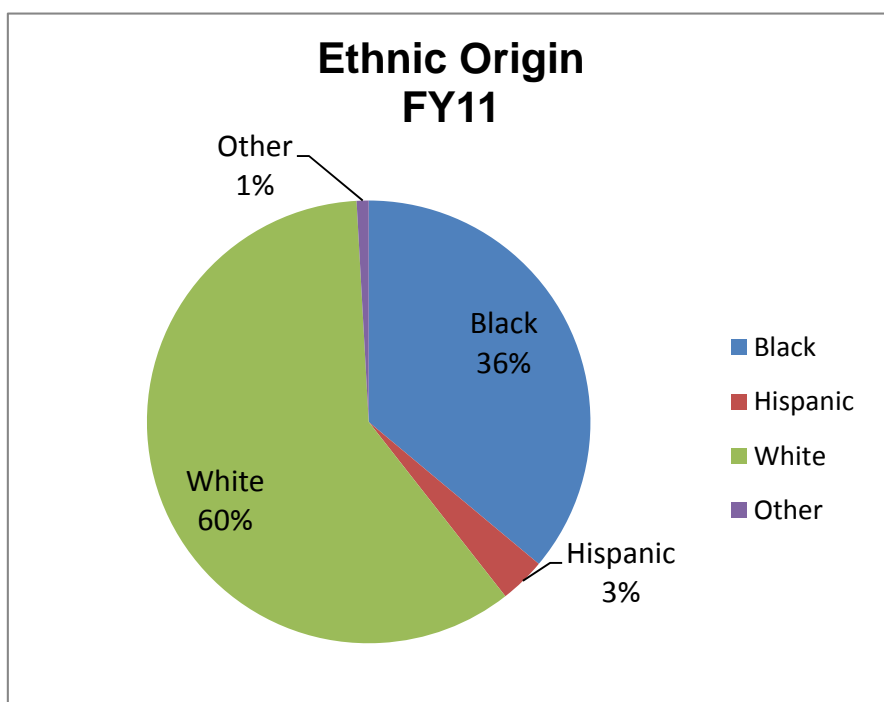
SECTION II: ENROLLMENT

Race/Ethnic Origin

	Total	American Indian		Asian		Black		Hispanic		Native Hawaiian		Two or More Races		White		Nonresident Alien		UnKnown	
		No.	%	No.	%	No.	%	No.	%	No.	%	No.	%	No.	%	No.	%	No.	%
*FY10	3,243	3	0.1%	3	0.1%	1,154	35.6%	75	2.3%	0	0.0%	6	0.2%	1,995	61.5%	1	0.0%	6	0.2%
FY11	3,233	10	0.3%	7	0.2%	1,167	36.1%	108	3.3%	1	0.0%	2	0.1%	1,931	59.7%	1	0.0%	7	0.2%

Source: TCSG Data Center EOY Race Rpt

* Estimated - Banner boxes were not merged until after Sum 09



SECTION II: ENROLLMENT

County of Residence

County	FY 2010 2009-2010		FY 2011 2010-2011	
	##	%	##	%
Appling	72	2.2%	73	2.2%
Atkinson	1	0.0%	0	0.0%
Bacon	4	0.1%	0	0.0%
Baldwin	0	0.0%	1	0.0%
Bartow	3	0.1%	1	0.0%
Berrien	1	0.0%	1	0.0%
Bibb	3	0.1%	0	0.0%
Bleckley	3	0.1%	2	0.1%
Brantley	1	0.0%	0	0.0%
Bryan	3	0.1%	3	0.1%
Bulloch	34	1.0%	26	0.8%
Burke	44	1.4%	38	1.2%
* Candler	95	2.9%	84	2.6%
Carroll	1	0.0%	0	0.0%
Catoosa	1	0.0%	0	0.0%
Chatham	7	0.2%	4	0.1%
Cherokee	0	0.0%	2	0.1%
Clayton	2	0.1%	2	0.1%
Clinch	1	0.0%	0	0.0%
Cobb	1	0.0%	1	0.0%
Coffee	3	0.1%	4	0.1%
Colquitt	1	0.0%	0	0.0%
Columbia	1	0.0%	0	0.0%
Crisp	0	0.0%	1	0.0%
DeKalb	0	0.0%	2	0.1%
Dodge	3	0.1%	3	0.1%
Dougherty	0	0.0%	1	0.0%
Douglas	1	0.0%	1	0.0%
Effingham	2	0.1%	3	0.1%
Elbert	0	0.0%	1	0.0%
* Emanuel	544	16.8%	636	19.4%
Evans	27	0.8%	25	0.8%
Fannin	0	0.0%	1	0.0%
Forsyth	0	0.0%	2	0.1%
Fulton	2	0.1%	2	0.1%
Gilmer	0	0.0%	1	0.0%
Glascok	3	0.1%	0	0.0%
Glynn	2	0.1%	0	0.0%
Gwinnett	2	0.1%	1	0.0%
Hall	0	0.0%	1	0.0%
Henry	4	0.1%	2	0.1%
Houston	2	0.1%	1	0.0%
Irwin	0	0.0%	1	0.0%
Jeff Davis	121	3.7%	98	3.0%
Jefferson	64	2.0%	73	2.2%
* Jenkins	89	2.7%	92	2.8%
* Johnson	97	3.0%	96	2.9%
Lamar	1	0.0%	1	0.0%

SECTION II: ENROLLMENT

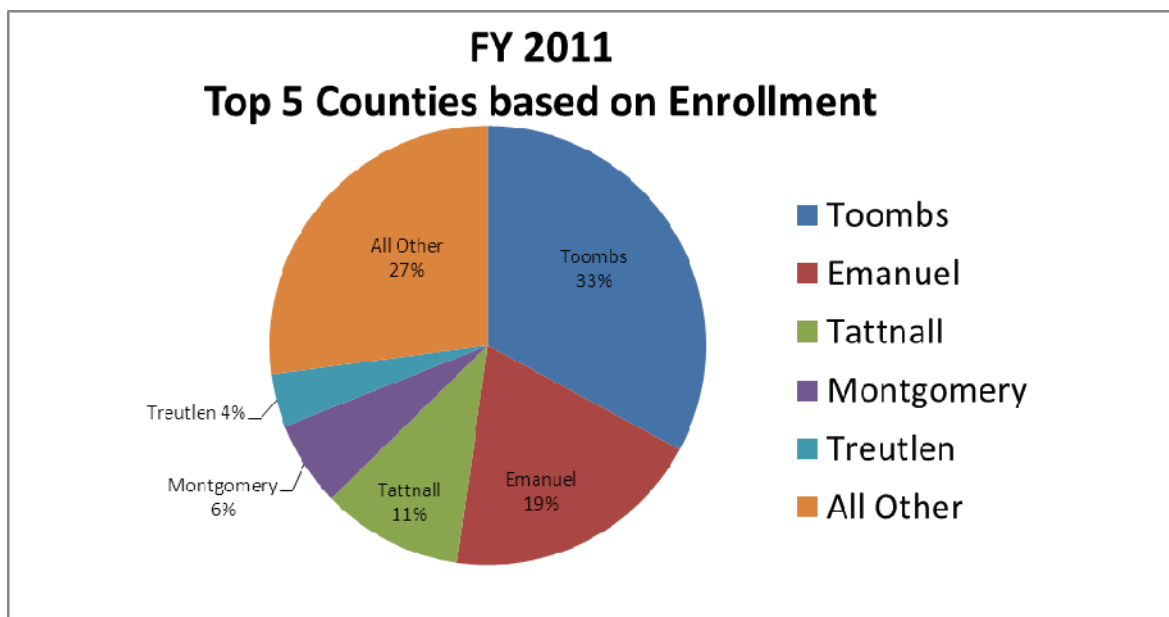
Laurens	36	1.1%	41	1.2%
Liberty	14	0.4%	13	0.4%
Long	3	0.1%	13	0.4%
Lowndes	2	0.1%	1	0.0%
Macon	1	0.0%	0	0.0%
* Montgomery	243	7.5%	206	6.3%
Oconee	0	0.0%	1	0.0%
Pierce	1	0.0%	3	0.1%
Richmond	7	0.2%	6	0.2%
Screven	7	0.2%	6	0.2%
Stephens	0	0.0%	1	0.0%
Sumter	0	0.0%	1	0.0%
Talbot	0	0.0%	1	0.0%
* Tattnall	342	10.5%	344	10.5%
Telfair	39	1.2%	35	1.1%
* Toombs	1064	32.8%	1079	32.9%
* Treutlen	127	3.9%	128	3.9%
Twiggs	2	0.1%	0	0.0%
Walker	1	0.0%	0	0.0%
Walton	1	0.0%	0	0.0%
Ware	2	0.1%	1	0.0%
Washington	17	0.5%	13	0.4%
Wayne	8	0.2%	9	0.3%
Wheeler	64	2.0%	86	2.6%
Wilkinson	1	0.0%	0	0.0%
Unknown	15	0.5%	0	0.0%
Out of State:	0	0.0%	8	0.2%
**(Unduplicated) TOTAL	3243	100.0%	3283	100.0%

* County is in the College's Service Delivery Area (SDA)

Source: TCSG Data Center Rpt #DC 122

* Estimated - Banner boxes were not merged until after Sum 09

** Unduplicated numbers do not equal the sum.



SECTION II: ENROLLMENT

Student Age Distribution

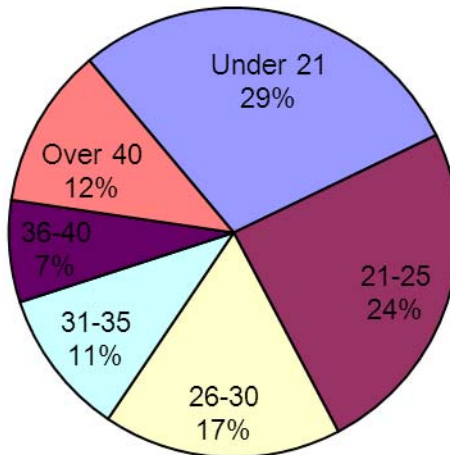
(Based on Fall Quarter Enrollment)

	2009-10		2010-11	
	FY10		FY11	
	No.	%	No.	%
Under 21	655	20.2%	937	29.0%
21 - 25	908	28.0%	790	24.4%
26 - 30	566	17.5%	555	17.2%
31 - 35	382	11.8%	341	10.5%
36 - 40	273	8.4%	237	7.3%
Over 40	459	14.2%	374	11.6%
TOTAL	3243	100.0%	3234	100.0%

Source: TCSG Data Center EOY Rpt Age

* Estimated - Banner boxes were not merged until after Sum 09

Credit Enrollment by Age Group FY 2011



SECTION II: ENROLLMENT

Student to Faculty Ratio

	Fall 2009	Fall 2010	Fall 2011
Enrollment	1975	1995	1826
FTE	1680	1461	1086
# Full-time Instructors	59	61	62
# Adjunct Instructors	56	52	49
Instructor FTE	77.48	78.16	78.17
Student/Faculty Ratio	21.68	18.69	13.89

Student/Faculty Ratio: Calculated by dividing Student Enrollment F.T.E. by Faculty F.T.E.

Student Enroll & FTE: From TCSG DC 126.

Faculty FTE: Calculated by full-time faculty plus 1/3 part-time faculty.

SECTION III

PROGRAM ENROLLMENT

SECTION III: PROGRAM ENROLLMENT

Program Enrollment

	2009-10	2010-11
Associate Degrees	* FY10	FY11
Accounting	23	31
Business Administrative Technology	22	32
Clinical Laboratory Technology	17	22
Computer Support Specialist	9	19
Criminal Justice Technology	36	46
Dental Hygiene	19	22
Early Childhood Care/Education	33	30
Electronics Technology	15	18
Forestry Technology	7	11
Game and Fish Preserve Management	4	8
Internet Specialist - Web Site Design	7	5
Management and Supervisory Development	15	19
Marketing Management	5	5
Networking Specialist	11	12

Diplomas	FY10	FY11
Accounting	53	64
Air Conditioning Technology	40	45
Business Administrative Technology	169	204
Business Office Technology	1	0
Computer Support Specialist	53	54
Cosmetology	145	176
Criminal Justice Technology	137	182
Drafting Technology	2	0
Early Childhood Care/Education	98	105
Electrical Construction and Maintenance	93	118
Electronics Fundamentals	3	1
Electronics Technology	40	41
Forestry Technology	18	16
Game and Fish Preserve Management	20	32
Industrial Electrical Technology	16	14
Internet Specialist - Web Site Design	29	37
Management and Supervisory Development	50	57
Marketing Management	20	26
Medical Assisting	191	173
Networking Specialist	31	39
Paramedic Technology	17	17
Pharmacy Technology	51	65
Practical Nursing	103	99
Radiologic Technology	23	17
Surgical Technology	56	64
Visual Communications	2	0
Welding and Joining Technology	81	92

SECTION III: PROGRAM ENROLLMENT

Technical Certificates of Credit (TCC)	FY10	FY11
Administrative Support Assistant	1	1
Air Conditioning Technician Assistant	4	0
Certified Nurse Aide	251	316
Child Care Assisting	3	7
Child Development Associate I	8	18
Cisco Network Specialist	7	4
Commercial Truck Driving	47	65
CompTIA A+ Certified Preparation	3	2
Computer Repair Technician	1	0
Cosmetology Instructor Training	1	0
Electrical Systems Assistant	1	3
Emergency Medical Technician Intermediate	31	30
Family Child Care Provider	0	2
Flat Shielded Metal Arc Welder	29	14
Flux Cored ARC Welder	1	4
Gas Metal Arc Welder Fabricator	19	19
Gas Tungsten Arc Welder	6	4
General Office Assistant	2	1
Healthcare Assistant	518	633
Healthcare Science	111	210
Help Desk Assistant	1	7
Human Resource Management Specialist	4	2
Imaging Science Services Assistant	132	82
Internet Specialist Web Site Designer	2	0
Internet Specialist Web Site Designer Assistant	1	0
Law Enforcement Investigations Assistant	43	0
Law Enforcement Technician	13	50
Management and Leadership Specialist	1	0
Medical Administrative Technician	72	113
Medical Office Assistant	5	3
Microsoft Office Application Professional	2	2
Network Administrator	3	0
Overhead Shielded Metal Arc Welder	5	8
Payroll Accounting Specialist	1	2
Residential Wiring Technician	0	1
Shampoo Technician	12	12
Small Business Management Specialist	1	0
Supervisor/Management Specialist	1	1
Technical Communication	13	18
Wildlife Preserve Assistant	20	18
Institutionally Accepted	13	13
Special Admit	7	13
Transient	23	32
TOTAL	3184	3728

Source: TCSG Data Center Rpt #DC180

* FY10 numbers are only listed for Fall 09, Wnt 10, and Spr 10 - Sum 09 not included due to Banner box differences

Unduplicated numbers do not equal the sum.

SECTION IV

PROGRAM LICENSURE

SECTION IV: PROGRAM LICENSURE

Program Licensure Pass Rates (Cumulative)

	2009-10	2010-11
Program	FY10	FY11
Certified Nurse Aide	Not Available	Written 94% Skills 84%
Clinical Laboratory Technology	100%	100%
Commercial Truck Driving	100%	100%
Cosmetology	100%	100%
Dental Hygiene	100%	100%
** Emergency Medical Technician	88%	87.5%
** Paramedic Technology	100%	100%
Pharmacy Technology	100%	100%
Practical Nursing	94%	92.3%
Radiologic Technology	100%	100%

Source: Director of Allied Health Accreditation

** Students are allowed a maximum of six attempts to complete all sections of the exam; therefore, they are not counted as failing until all attempts have been exhausted. Also, students are reported during the time period in which the test is taken, not necessarily the graduating term.

SECTION V

GRADUATES

SECTION V: GRADUATES

Awards Conferred By Program

	2009-10 FY10	2010-11 FY11
Associate Degrees		
Accounting	7	7
Business Administrative Technology	4	2
Clinical Laboratory Technology	4	6
Computer Support Specialist	3	3
Criminal Justice Technology	7	4
Dental Hygiene	7	5
Drafting Technology	1	0
Early Childhood Care/Education	2	4
Electronics Technology	3	5
Forest Technology	2	1
Game and Fish Preserve Management	1	1
Internet Specialist - Web Site Design	0	2
Management and Supervisory Development	4	3
Marketing Management	1	0
Networking Specialist	7	3

Diplomas		
Accounting	5	9
Air Conditioning Technology	7	8
Business Administrative Technology	27	23
Business Office Technology	1	0
Computer Support Specialist	8	5
Cosmetology	35	37
Criminal Justice Technology	10	27
Drafting Technology	2	0
Early Childhood Care/Education	8	8
Electrical Construction and Maintenance	9	19
Electronics Fundamentals	0	1
Electronics Technology	2	6
Forest Technology	5	3
Industrial Electrical Technology	2	7
Internet Specialist - Web Site Design	1	0
Management and Supervisory Development	3	1
Marketing Management	1	3
Medical Assisting	24	35
Networking Specialist	3	1
Paramedic Technology	14	0
Pharmacy Technology	4	5
Practical Nursing	53	27
Radiologic Technology	10	6
Surgical Technology	9	9
Visual Communications	3	0
Welding and Joining Technology	5	11

SECTION V: GRADUATES

Technical Certificates of Credit (TCC)		
Administrative Support Assistant	25	22
Advanced CAD Operator-Architectural	1	0
Air Conditioning Repair Specialist	1	1
Air Conditioning Technician Assistant	1	0
Basic Electrical Technician	1	0
CAD Operator Architectural	1	0
Certified Nurse Aide	103	84
Child Care Assisting	7	11
Child Development Associate I	2	11
Cisco Network Specialist	3	6
Commercial Truck Driving	51	45
Commercial Wiring	5	16
CompTIA A+ Certified Preparation	4	11
Computer Aided Drafting Specialist	1	0
Computer Repair Technician	1	0
Cosmetology Instructor Training	1	0
Drafting Aide	1	0
Early Childhood Program Administration	1	0
Electrical Contracting Technician	7	19
Electrical Systems Assistant	6	17
Emergency Medical Technician Intermediate	10	8
Flat Shield Metal Arc Welder	26	12
Flux Cored ARC Welder	1	5
Forest Technology Assistant	0	7
Gas Metal Arc Welder Fabricator	18	19
Gas Tungsten Arc Welder	10	8
General Office Assistant	23	24
Healthcare Assistant	49	88
Healthcare Science	1	3
Help Desk Assistant	2	5
Human Resource Management Specialist	3	3
Imaging Science Services Assistant	6	22
Internet Specialist Web Site Designer	1	0
Internet Specialist Web Site Designer Assistant	1	0
Law Enforcement Investigations Assistant	40	19
Law Enforcement Technician	7	37
Management and Leadership Specialist	0	5
Medical Administrative Technician	29	32
Medical Office Assistant	6	11
Microsoft Excel Application User	5	7
Microsoft Office Application Professional	15	12
Microsoft Word Application Professional	12	3
Network Administrator	0	1
Overhead Shielded Metal Arc Welder	4	11
Payroll Accounting Specialist	8	18
Phlebotomy Technician	15	0
Residential Wiring Technician	6	17
Shampoo Technician	11	8
Small Business Entrepreneur	1	0
Supervisor/Management Specialist	1	7
Wildlife Preserve Assistant	4	19
TOTAL	842	951

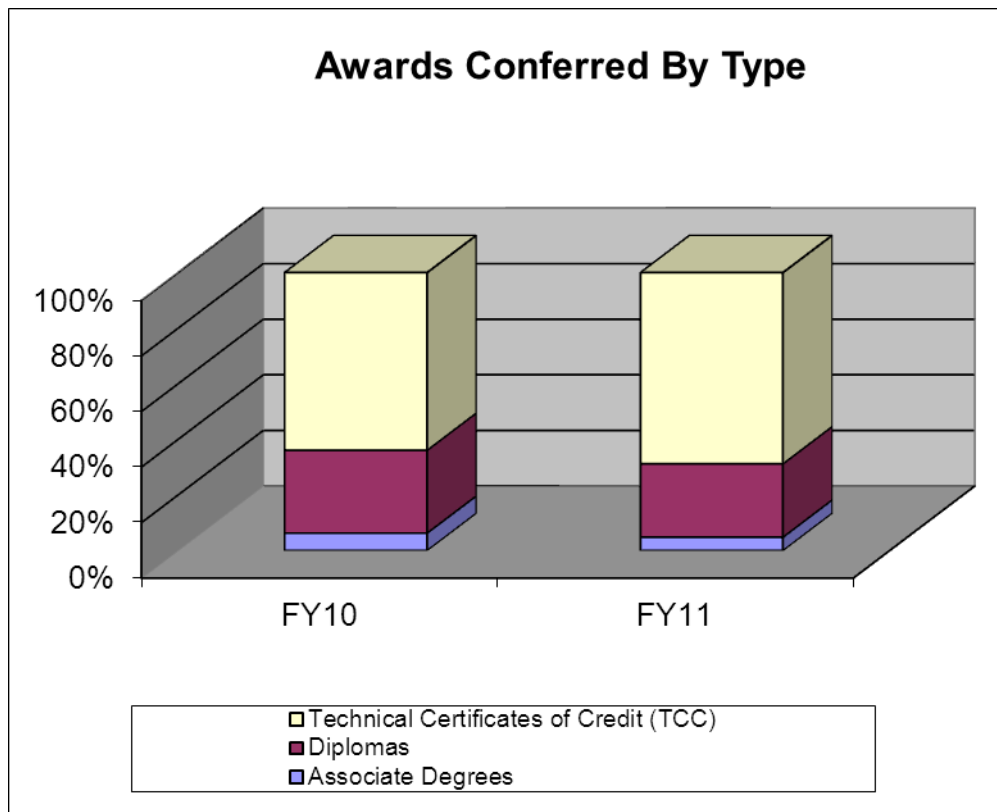
Source: TCSG Data Center Rpt #DC109

SECTION V: GRADUATES

Awards Conferred By Type

	2009-10	2010-11
	FY10	FY11
Associate Degrees	53	46
Diplomas	251	251
Technical Certificates of Credit (TCC)	538	654
TOTAL	842	951

Source: TCSG Data Center Rpt #DC109



SECTION V: GRADUATES

Unduplicated Graduates & Total Placement Rates

	2009-10	2010-11
Employment Status	FY10	FY11
Employed in Field	234	184
Military	2	3
Employed in Related Field	17	12
Employed in Unrelated Field	39	34
Employed in Field & Continued Education	51	92
Employed in Related Field & Continued Education	20	22
Employed in Unrelated Field & Continued Education	72	88
Continued Education	217	247
Not Employed	24	11
Not Available for Employment	14	10
Refused Employment	0	0
Status Unknown	8	16
Total Awards Conferred (duplicated)	698	719
Placed in Field Rate * (%)	82.0%	83.7%
Total Placement Rate ** (%)	96.4%	98.4%

Source: TCSG Data Center Report #DC108

* Placed in Field Rate = (Emp in Field + Military + Emp in Rel Field + Emp in Field & Cont Educ + Emp in Rel Field & Cont Educ)/Total Grads - (Emp Unrel Field & Cont Educ + Cont Ed + Not Avail)

** Total Placement Rate = (Emp in Field + Military + Emp in Rel Field + Emp Unrel Field + Emp in Field & Cont Educ + Emp Rel Field & Cont Educ + Emp Unrel Field & Cont Educ + Cont Educ)/(numerator + Not Emp)

SECTION V: GRADUATES

**Total Placement Rates by PAS Program Area
FY 2011**

Program <i>(By Major, with Total for each PAS Program Area)</i>	Total Placement Rate	Total Awards (dup.)	Empld In Field	Military	Empld in Rel Field	Empld in Unrel Field	Empld in Field & Cont Ed	Empld in Rel Field & Cont Ed	Empld in Unrel Field & Cont Ed	Cont Educ	Not Empld	Unavail for Emplmt	Refused Emplmt	Status Unknown
Accounting (AC02)	88.9%	9	4	0	0	0	1	0	2	1	1	0	0	0
Accounting (AC03)	100.0%	7	4	0	1	0	1	0	0	1	0	0	0	0
Payroll Accounting Specialist (5AP1)	100.0%	18	8	0	0	0	1	1	1	7	0	0	0	0
Accounting	97.1%	34	16	0	1	0	3	1	3	9	1	0	0	0
Air Conditioning Repair Specialist (AI01)	100.0%	1	0	0	0	0	0	0	0	1	0	0	0	0
Air Conditioning Technology (AI02)	100.0%	8	3	0	0	1	2	0	1	0	0	1	0	0
Air Conditioning Technology	100.0%	9	3	0	0	1	2	0	1	1	0	1	0	0
Administrative Support Assistant (5DC1)	100.0%	22	5	0	0	0	4	1	1	11	0	0	0	0
Business Administrative Technology (BAT2)	100.0%	23	5	0	1	0	5	2	0	10	0	0	0	0
Business Administrative Technology (BAT3)	100.0%	2	2	0	0	0	0	0	0	0	0	0	0	0
General Office Assistant (GO01)	100.0%	24	5	0	1	0	4	1	1	12	0	0	0	0
Medical Administrative Technician (MEA1)	100.0%	32	5	0	1	1	4	1	3	17	0	0	0	0
Medical Office Assistant (5DE1)	100.0%	11	1	0	0	1	0	1	1	7	0	0	0	0
Microsoft Excel Application User (5BB1)	100.0%	7	4	0	0	0	2	0	0	1	0	0	0	0
Microsoft Office Application Professional (5CG1)	100.0%	12	3	0	1	0	1	0	0	7	0	0	0	0
Microsoft Word Application Professional (5CH1)	100.0%	3	2	0	0	0	0	0	0	1	0	0	0	0
Business and Office Technology	100.0%	136	32	0	4	2	20	6	6	66	0	0	0	0
Commercial Truck Driving (TU01)	97.6%	45	31	0	0	3	1	1	3	1	1	2	0	2
Commercial Truck Driving	97.6%	45	31	0	0	3	1	1	3	1	1	2	0	2
Cisco Network Specialist (5BG1)	83.3%	6	0	0	0	0	2	0	3	0	1	0	0	0
CompTIA A+ Certified Preparation (5BH1)	90.9%	11	1	0	0	0	4	0	4	1	1	0	0	0
Computer Support Specialist (CMU3)	100.0%	3	0	0	1	0	1	0	1	0	0	0	0	0
Computer Support Specialist (CMU4)	100.0%	5	0	0	0	0	0	0	1	4	0	0	0	0
Help Desk Assistant (5BL1)	100.0%	5	1	0	0	0	1	0	1	1	0	1	0	0
Internet Specialist Web Site Design (CIW3)	100.0%	2	0	0	0	0	1	0	0	1	0	0	0	0
Network Administrator (5BC1)	100.0%	1	0	0	0	0	0	0	1	0	0	0	0	0
Networking Specialist (CIN3)	66.7%	3	0	0	0	0	1	0	1	0	1	0	0	0
Networking Specialist (CIN4)	100.0%	1	0	0	0	0	0	0	0	1	0	0	0	0
Computer Information Systems	91.7%	37	2	0	1	0	10	0	12	8	3	1	0	0
Cosmetology (CS02)	100.0%	37	21	0	0	3	3	0	4	3	0	3	0	0
Shampoo Technician (SHT1)	100.0%	8	0	0	0	0	0	0	0	8	0	0	0	0
Cosmetology	100.0%	45	21	0	0	3	3	0	4	11	0	3	0	0
Criminal Justice Technology (CJ02)	92.6%	27	0	0	0	1	1	0	8	15	2	0	0	0
Criminal Justice Technology (CJ03)	100.0%	4	0	0	0	2	1	0	1	0	0	0	0	0
Law Enforcement Investigations Assistant (LEI1)	100.0%	19	0	1	0	0	0	0	1	17	0	0	0	0
Law Enforcement Technician (LEF1)	100.0%	37	0	2	0	0	0	1	3	31	0	0	0	0

SECTION V: GRADUATES

Criminal Justice	97.7%	87	0	3	0	3	2	1	13	63	2	0	0	0
Dental Hygiene (DH03)	100.0%	5	5	0	0	0	0	0	0	0	0	0	0	0
Dental Hygiene	100.0%	5	5	0	0	0	0	0	0	0	0	0	0	0
Child Care Assisting (CH01)	100.0%	11	1	0	0	0	3	0	2	5	0	0	0	0
Child Development Associate I (CDA1)	100.0%	11	6	0	0	0	5	0	0	0	0	0	0	0
Early Childhood Care/Education (OO02)	100.0%	8	1	0	0	0	5	1	1	0	0	0	0	0
Early Childhood Care/Education (OO03)	100.0%	4	4	0	0	0	0	0	0	0	0	0	0	0
Early Childhood Care and Education	100.0%	34	12	0	0	0	13	1	3	5	0	0	0	0
Commercial Wiring (CWO1)	100.0%	16	5	0	1	2	1	0	0	7	0	0	0	0
Electrical Construction and Maintenance (WO02)	100.0%	19	5	0	1	3	1	1	0	8	0	0	0	0
Electrical Contracting Technician (ELN1)	100.0%	19	5	0	2	2	2	0	0	8	0	0	0	0
Electrical Systems Assistant (ELS1)	100.0%	17	5	0	1	2	1	0	1	7	0	0	0	0
Industrial Electrical Technology (IEA2)	100.0%	7	1	0	1	2	0	0	0	3	0	0	0	0
Residential Wiring Technician (RWT1)	100.0%	17	5	0	1	2	1	0	0	8	0	0	0	0
Electrical Construction and Maintenance	100.0%	95	26	0	7	13	6	1	1	41	0	0	0	0
Electronic Fundamentals (EF02)	100.0%	1	0	0	0	0	0	0	1	0	0	0	0	0
Electronics Technology (EFA3)	100.0%	5	2	0	0	1	2	0	0	0	0	0	0	0
Electronics Technology (EFA4)	83.3%	6	1	0	0	1	0	0	2	1	1	0	0	0
Electronics and Telecommunications	91.7%	12	3	0	0	2	2	0	3	1	1	0	0	0
Forest Technician Assistant (FO01)	100.0%	7	0	0	1	0	0	0	0	6	0	0	0	0
Forest Technology (FO02)	100.0%	3	1	0	0	0	0	0	0	2	0	0	0	0
Forest Technology (FO03)	100.0%	1	0	0	0	0	0	0	0	1	0	0	0	0
Game and Fish Preserve Management (GFP3)	100.0%	1	0	0	0	0	0	0	1	0	0	0	0	0
Wildlife Preserve Assistant (WPA1)	100.0%	19	0	0	0	0	0	0	1	18	0	0	0	0
Forestry Technology	100.0%	31	1	0	1	0	0	0	2	27	0	0	0	0
Healthcare Assistant (5CJ1)	98.8%	88	6	0	1	5	14	6	23	28	1	0	0	4
Healthcare Science (HHS1)	100.0%	3	1	0	0	0	1	0	1	0	0	0	0	0
Health Care Assistant	98.9%	91	7	0	1	5	15	6	24	28	1	0	0	4
Human Resource Management Specialist (5BZ1)	100.0%	3	0	0	2	0	1	0	0	0	0	0	0	0
Management and Leadership Specialist (5AL1)	100.0%	5	0	0	2	0	2	0	0	0	0	1	0	0
Management/Supervisory Development (MS02)	100.0%	1	0	0	0	0	1	0	0	0	0	0	0	0
Management/Supervisory Development (MS03)	100.0%	3	0	0	1	0	2	0	0	0	0	0	0	0
Supervisor/Management Specialist (5AZ1)	100.0%	7	0	0	2	0	4	0	0	1	0	0	0	0
Management-Supervisory Development	100.0%	19	0	0	7	0	10	0	0	1	0	1	0	0
Marketing Management (MM02)	100.0%	3	1	0	0	0	1	0	0	0	0	0	0	1
Marketing Management	100.0%	3	1	0	0	0	1	0	0	0	0	0	0	1
Medical Assisting (MA02)	97.1%	35	14	0	1	3	7	1	5	3	1	0	0	0
Medical Assisting	97.1%	35	14	0	1	3	7	1	5	3	1	0	0	0
Clinical Laboratory Technology (ML03)	100.0%	6	6	0	0	0	0	0	0	0	0	0	0	0
Medical Laboratory Technology	100.0%	6	6	0	0	0	0	0	0	0	0	0	0	0
Emergency Medical Technician Intermediate (EM01)	100.0%	8	3	0	0	0	5	0	0	0	0	0	0	0
Paramedic Technology	100.0%	8	3	0	0	0	5	0	0	0	0	0	0	0
Pharmacy Technology (PH02)	80.0%	5	4	0	0	0	0	0	0	0	1	0	0	0
Pharmacy Technology	80.0%	5	4	0	0	0	0	0	0	0	1	0	0	0
Certified Nurse Aide (CNF1)	100.0%	84	20	0	0	5	10	3	10	27	0	1	0	8
Practical Nursing (PN04)	100.0%	27	20	0	0	0	3	0	1	2	0	1	0	0
Practical Nursing and Related Programs	100.0%	111	40	0	0	5	13	3	11	29	0	2	0	8
Imaging Science Services Assistant (ISA1)	100.0%	22	0	0	0	2	0	2	6	12	0	0	0	0

SECTION V: GRADUATES

Radiologic Technology (RT04)	66.7%	6	2	0	0	0	0	0	0	0	2	2	0	0	0
Radiologic Technology	92.9%	28	2	0	0	2	0	2	6	14	2	0	0	0	0
Surgical Technology (ST02)	100.0%	9	0	0	0	1	3	1	2	2	0	0	0	0	0
Surgical Technology	100.0%	9	0	0	0	1	3	1	2	2	0	0	0	0	0
Flat Shielded Metal Arc Welder (5BR1)	100.0%	12	4	0	0	0	3	1	1	2	0	0	0	0	1
Flux Cored ARC Welder (WJS1)	100.0%	5	3	0	0	0	2	0	0	0	0	0	0	0	0
Gas Metal Arc Welder Fabricator (5BW1)	100.0%	19	5	0	0	0	2	1	1	10	0	0	0	0	0
Gas Tungsten Arc Welder (5BT1)	100.0%	8	4	0	0	0	2	1	1	0	0	0	0	0	0
Overhead Shielded Metal Arc Welder (5BU1)	100.0%	11	7	0	0	0	2	1	0	1	0	0	0	0	0
Welding and Joining Technology (WJ02)	100.0%	11	3	0	1	3	0	0	2	2	0	0	0	0	0
Welding and Joining Technology	100.0%	66	26	0	1	3	11	4	5	15	0	0	0	0	1

Source: TCSG Data Center Report #DC112

SECTION VI

FINANCIAL AID

SECTION VI: FINANCIAL AID

Amount of Financial Aid Awards

	2009-10 (FY10)		2010-11 (FY11)	
	Total Undupl. Recipients	Total Award Amount	Total Undupl. Recipients	Total Award Amount
State Aid				
HOPE Diploma Tuition	2647	\$2,800,909	2827	\$3,068,063
HOPE Diploma Fees	2647	\$269,972.40	2827	\$262,768
HOPE Diploma Books	2647	\$546,458	2827	\$539,203
Total Awards		\$3,617,339		\$3,870,034
HOPE Degree Tuition	132	\$125,560	98	\$152,910
HOPE Degree Fees	132	\$12,500	98	\$12,808
HOPE Degree Books	132	\$26,620	98	\$28,150
Total Awards		\$164,680		\$193,868
ACCEL Tuition	13	\$8,600	13	\$7,650
ACCEL Fees	13	\$2,150	13	\$920
ACCEL Books	13	\$1,150	13	\$1,700
Total Awards		\$11,900		\$10,270
GED Awards	80	\$40,000	79	\$38,000
GA LEAP Grant	81	\$7,663	42	\$8,158
Title IV Awards				
Federal PELL Grant	1793	\$4,132,714	2111	\$4,914,061
Federal FSEOG Grant	250	\$57,450	169	\$42,400
Federal Work-Study	53	\$93,135	39	\$94,225
Total Awards				
Total Awards for Year		\$8,124,881		\$9,171,016
Total Receiving Aid		* 2804 Undup excluding Sum 09		3,112

Source: STC Director of Financial Aid

SECTION VII

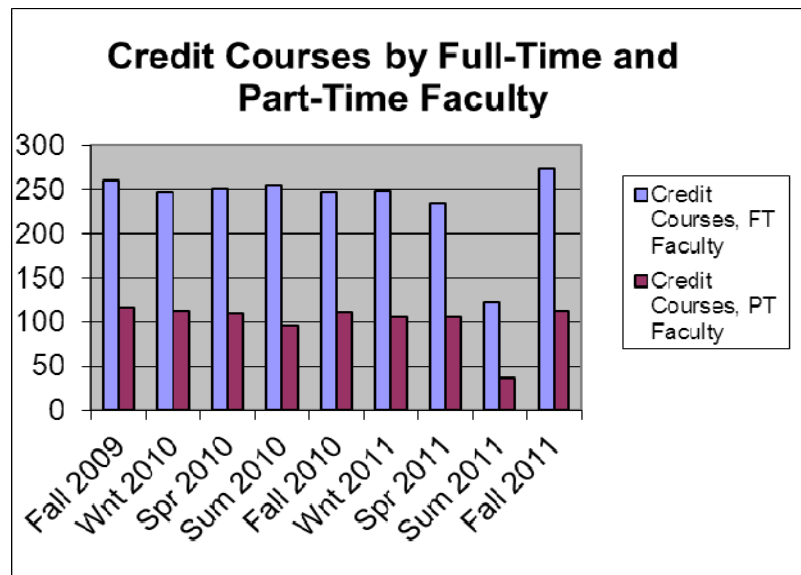
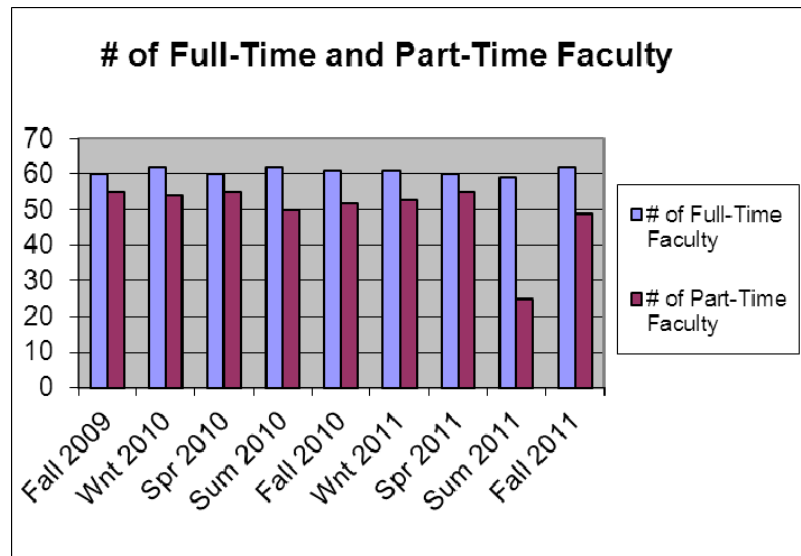
FACULTY AND STAFF

SECTION VII: FACULTY AND STAFF

Credit Courses Taught by Full-Time and Part-Time Faculty

	Fall 2009	Wnt 2010	Spr 2010	Sum 2010	Fall 2010	Wnt 2011	Spr 2011	Sum 2011	Fall 2011
# of Full-Time Faculty	60	62	60	62	61	61	60	59	62
# of Part-Time Faculty	55	54	55	50	52	53	55	25	49
	Fall 2009	Wnt 2010	Spr 2010	Sum 2010	Fall 2010	Wnt 2011	Spr 2011	Sum 2011	Fall 2011
Credit Courses, FT Faculty	260	247	251	255	247	248	234	122	273
Credit Courses, PT Faculty	116	112	110	96	111	105	105	36	112
Total # of Credit Courses	376	359	361	351	358	353	339	158	385
% Taught by FT Faculty	69%	69%	70%	73%	69%	70%	69%	77%	71%
% Taught by PT Faculty	31%	31%	30%	27%	31%	30%	31%	23%	29%

Source: SQL Rpt FacultyInfoForFactBook2.brw and ScheduleByInstructor



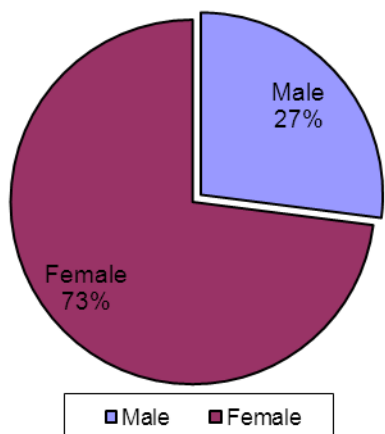
SECTION VII: FACULTY AND STAFF

Faculty Demographics Fall 2011

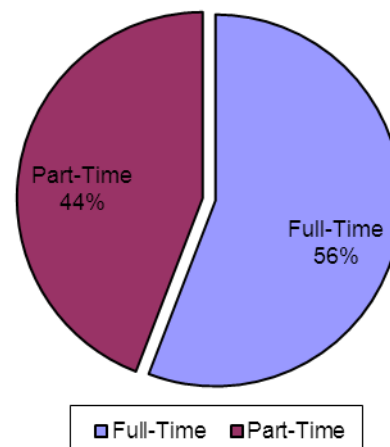
		Full-Time	Part-Time	Total
Gender	Male	21	9	30
	Female	41	40	81
Ethnicity	Black	2	2	4
	White	60	47	107
Highest Earned Degree	Doctorate	1	1	2
	Specialist	1	3	4
	Masters	32	19	51
	Baccalaureate	11	16	27
	Associate	4	4	8
	Diploma	7	4	11
	Technical Certificate	1	2	3
	Work Experience	5	0	5
Age	20-29	2	8	10
	30-39	17	13	30
	40-49	26	14	40
	50-59	13	8	21
	60+	4	6	10

Source: SQL Rpt FacultyInfoForFactBook2.brw

Fall 2011 - Male/Female

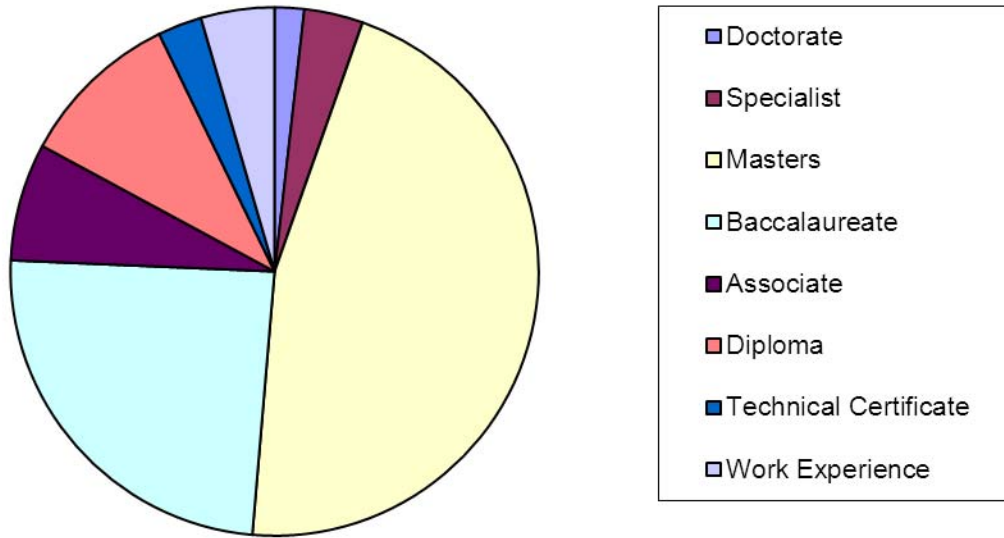


Fall 2011 - FT/PT

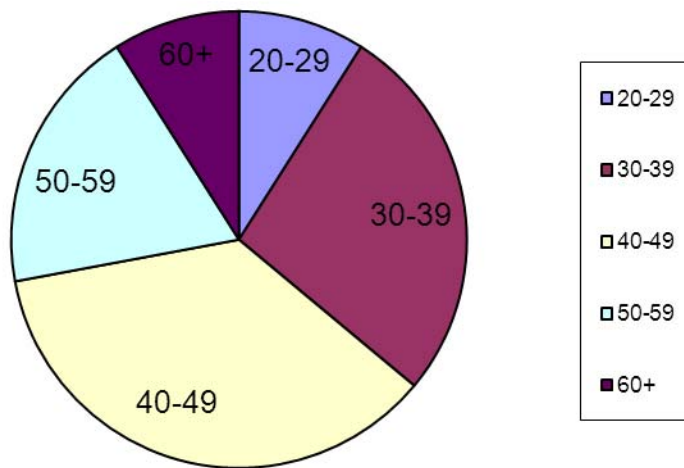


SECTION VII: FACULTY AND STAFF

Fall 2011 - Faculty Highest Earned Degree



Fall 2011 - Faculty Age



SECTION VIII

LIBRARY RESOURCES

SECTION VIII: LIBRARY RESOURCES

Services

Reference questions

Ask A Librarian Form Usage		
	FY 2010	FY 2011
General Question	8	0
GALILEO	8	3
NetLibrary	6	13
Total	22	16
Reference Questions	80	91

Interlibrary Loans

ILL		
	FY 2010	FY 2011
Borrowing	70	44
Lending	141	131
Total	211	175

Bibliographic Instruction Summary

FY10

Term	# of Sessions	Attendees
Summer	16	223
Fall	38	721
Winter	37	652
Spring	19	381
Total	110	1,977

FY 11

Term	# of Sessions	Attendees
Summer	26	433
Fall	33	823
Winter	17	329
Spring	25	553
Total	101	2,138

SECTION VIII: LIBRARY RESOURCES

Resources

Circulation

Transaction Type	Number
Check Outs	1,992
In-House Use	1
Renewals	544
Total	2,537

GALILEO

GALILEO usage, with comparison to four other TCSG colleges

School	Enrollment Fall Semester 2011	Keyword	Full Text	Citations	Logins	Links Chosen	Total
North Georgia	2,533	55,577	12,691	8,127	4,042	2,612	83,049
South Georgia	2,278	62,712	6,443	6,454	2,315	861	78,785
Southeastern	1,826	61,965	11,570	9,347	5,274	2,665	90,821
Southwest Georgia	1,769	31,384	4,541	4,777	2,189	552	43,443
Altamaha	1,428	28,686	7,350	7,538	2,962	2,402	48,938

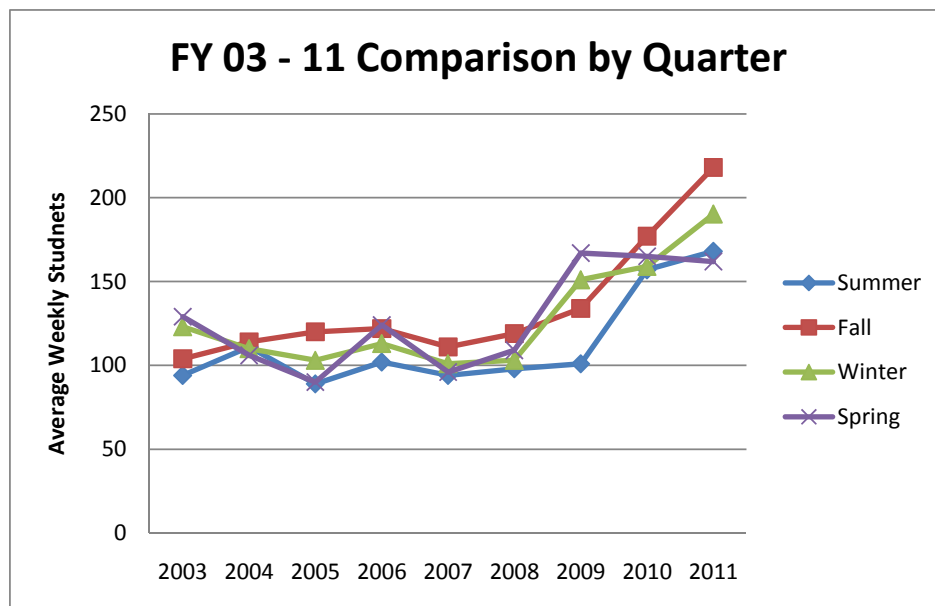
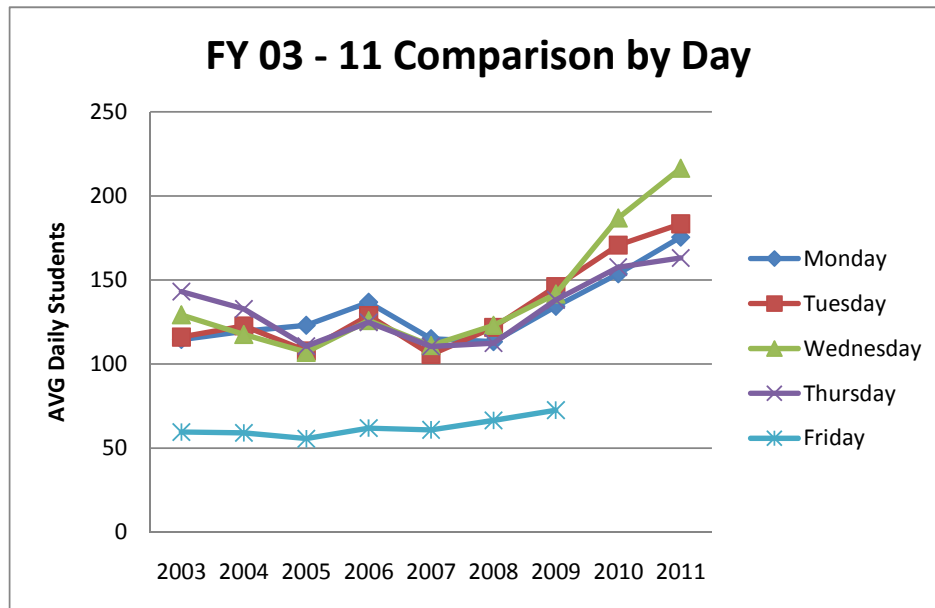
Databases made available through GALILEO, paid for locally.

- Cumulative Index to Nursing and Allied Health Literature (CINAHL)
- Encyclopedia Britannica
- Gale Encyclopedia of Alternative Medicine, 2nd ed.
- Gale Encyclopedia of Espionage, Intelligence and Security
- Gale Encyclopedia of Surgery, a Guide for Caregivers and Patients
- Literature Resource Center (Gale)
- Magill's Medical Guide

SECTION VIII: LIBRARY RESOURCES

Access

8 Year Comparison, Library Attendance, Vidalia



SECTION IX

**CONTINUING EDUCATION
and
ECONOMIC DEVELOPMENT**

SECTION IX: CONTINUING EDUCATION and ECONOMIC DEVELOPMENT

Adult Education

	FY 2010	FY 2011
Students Served	1,914	2,019
Contact Hours	132,669	119,925
Level Completions	653	636
GEDs Awarded	519	546

Adult Education Enrollment by County

County	FY 2010	FY 2011
Candler	155	143
Emanuel	554	618
Jenkins	137	139
Johnson	104	104
Montgomery	71	42
Tattnall	228	219
Toombs	438	459
Treutlen	227	295
Total	1,914	2,019

ESL Enrollment by County

County	FY 2010	FY 2011
Candler	8	4
Emanuel	0	5
Jenkins	0	0
Johnson	0	0
Montgomery	0	0
Tattnall	28	0
Toombs	19	4
Treutlen	0	0
Total	55	13

ESL Contact Hours by County

County	FY 2010	FY 2011
Candler	189	159
Emanuel	0	204
Jenkins	0	0
Johnson	0	0
Montgomery	0	0
Tattnall	1,057	0
Toombs	597	171
Treutlen	0	0
Total	1,843	534

Source: Ex. Dir. of Adult Education

SECTION IX: CONTINUING EDUCATION and ECONOMIC DEVELOPMENT

Economic Development Services Data

Enrollment (People Served)

Department	FY 2010	FY 2011
Continuing Ed	756	728
Conferencing	4,944	3,641
Community Med/Emergency Training	9,506	10,012
Contract Training	1,854	4,660
Total	17,060	19,041

Revenue (\$)

Department	FY 2010	FY 2011
Continuing Ed	26,333	42,353
Conferencing	41,794	17,937
Community Med/Emergency Training	94,832	81,549
Contract Training	106,944	135,300
Total	269,903	277,139

Source: VPEDP

SECTION IX: CONTINUING EDUCATION and ECONOMIC DEVELOPMENT**Quick Start
Companies Served FY 10**

Chicken of the Sea	US Pet
Range Fuels	US Energy
Vista Windows	

**Contract Training
Companies Served FY 10**

All the Children	Nordson
Altamaha Home Care	Northland Cable
Appling Health Care	Oh Deco Where Art Thou
Atlantic Homecare	Owen Building Supply
Atlantic Steel	Oxford Industries
Atlantic Wood	Pitch and Stitch
Bestline Door and Sash	Plant Hatch
Bethany Home	Satilla Regional
Brown Eyed Susan's	Savannah Luggage
Buy Smart Pharmacy	Sign and Stamp
Cardiology Associates	Smith State Prison
Chicken of the Sea	Soothing Sensations
Clean by Lucy	STC Medical Students
Dorminy Medical Center	Summer's Landing
DOT Foods	Toombs Boys and Girls Clubs
East Georgia Medical Center	Trane
Emanuel County Hospital	Tri-County Chiropractic
Flower Basket	Truax Veneer
Franklin Home Improvement	US Energy
Georgia Correctional Industries (6)	US Pet
Hospice Satilla	Vidalia Ink
Kiddie Kastle	Vidalia Valley
Mary's Interiors	Vista Windows
McDonalds	VNS
Meadows Regional Medical Center	Walker Consulting
Meadows Wellness Center	Wheeler Correctional
Meredith Industries	Work Ready Region Team
Metter Antiques	

Small Business Assistance Services

Service	FY 2010	FY 2011
Business Startup Kits Distributed	54	52
Small Business Contacts	85	72
Business Starts	16	18

Source: VPEDP