



FACT BOOK

FY 2010

Table of Contents

Section I: General Information.....	1
Section II: Enrollment	14
Section III: Program Enrollment	23
Section IV: Program Licensure.....	26
Section V: Graduates	28
Section VI: Financial Aid	36
Section VII: Faculty and Staff	38
Section VIII: Library Resources	43
Section IX: Continuing Education and Economic Development	48

SECTION I

GENERAL INFORMATION

SECTION I: GENERAL INFORMATION

Introduction

The Office of Institutional Advancement is pleased to present the **Southeastern Technical College (STC) *Fact Book***.

This book is intended as a single, readily accessible, consistent source of information about Southeastern Technical College. It is a summary of institutional data compiled to capture the 2010 fiscal year. The Fact Book provides pertinent facts and figures valuable to administrators, faculty, students, and the public.

An aspiration of this process is to make available increasingly more useful information on an annual basis. To help in accomplishing this, we welcome your comments and suggestions for the Fact Book.

Eide Nesmith
Director of Institutional Advancement
enesmith@southeasterntech.edu

SECTION I: GENERAL INFORMATION

Mission Statement

Southeastern Technical College, a unit of the Technical College System of Georgia, provides an innovative, educational environment for student learning through associate degree, diploma, and technical certificate of credit programs; adult and continuing education; and customized training and services focused on building a well-educated, globally competitive workforce for Southeastern Georgia.

We accomplish our mission through the following programs and services:

- Technical Education
- Adult Education
- Economic Development

Vision Statement

The Vision statement is a values-based description of the College's desired future and its distinctive characteristics of success. It clarifies what the College should look like and how it should conduct itself as it fulfills its Mission.

Southeastern Technical College will be recognized as an educational leader in Southeastern Georgia. The College will deliver quality, student-centered, and accessible postsecondary education and training. The College will empower students for success, cultivating innovative and economically thriving communities and enterprises.

SECTION I: GENERAL INFORMATION

Service Delivery Area and Campus Locations



SECTION I: GENERAL INFORMATION

Southeastern Technical College serves the geographic area of Candler, Emanuel, Jenkins, Johnson, Montgomery, Tattnall, Toombs, and Treutlen counties, which are located in southeast Georgia. The college currently offers programs at the following twelve locations:

The Vidalia Campus is located at 3001 East First Street in Vidalia, Georgia. This location is along U.S. Highway 280 and is approximately 2.5 miles from U.S. Highway 1.

- Building 1: Administration Building (1990) 84,256 sq. ft.
Houses offices of administrative and support staff, Industrial programs, General Education classes, COS, Bookstore, and Library
- Building 2: Gillis Building (2003) 45,075 sq. ft.
Houses Allied Health programs and Business programs
- Building 3: Health Sciences Annex (2007) 10,000 sq. ft.
Houses Dental Hygiene program and has space for a future Medical program

The Swainsboro Campus is located at 346 Kite Road in Swainsboro, Georgia. This location is along GA Highway 57 and is approximately 2 miles from U.S. Highway 1 and 35 miles from the Vidalia Campus.

- Building 1: (1996) 20,000 sq. ft.
Houses Administrative offices, Student Affairs, Allied Health classrooms/labs (PN, MA & PHL)
- Building 2: (1963-1979) 39,611 Sq. ft.
Houses Academic Affairs offices, Business classrooms/labs (ACC BAT, CIS, General Education & CJ), Library Resource Center, Career Center, technical classrooms/labs & ECM)
- Building 3: (1979) 10,290 Sq. ft.
Houses COS, Student Center, Bookstore, Facilities, Security & Polycom
- Building 4: (1989) 5,499 Sq. ft.
Houses Child Care Center
- Building 5: (1955) 1,200 Sq. ft.
Houses Information Services/Technical Support
- Building 6: (2003) 24,000 Sq. ft.
Houses Technology Center, Economic Development offices, Technical Division classrooms/labs (Flex Lab, F&G/FOR, & WLD)
- Building 7: (1995) 2,700 Sq. ft.
Houses Maintenance/Storage
- Building 8: (1964) 10,020 Sq. ft.
Houses Classrooms and record storage

SECTION I: GENERAL INFORMATION

Building 9: (2003) 3,000 Sq. ft. Greenhouse

Building 10: (1950) 6,899 Sq. ft.
Houses maintenance and is a warehouse storage building

Southeastern Tech's Glennville Campus is located at 211 S. Tillman Street in Glennville, Georgia. The campus is located approximately one block from U.S. Highway 301. The distance to the Glennville Campus from the Vidalia Campus is 43.4 miles.

Building 1: Tattnall Institute Building (1916 – major renovations completed in 2004) 13,544 Sq. ft.
Houses offices, classroom space, library, and the Glennville-Tattnall Museum

Building 2: Allied Health Building (major renovations completed in 2004) 5,209 Sq. Ft.
Houses Medical Assisting and Practical Nursing programs

Building 3: Tattnall Technology Center (2004) 7,995 Sq. ft.
Houses Adult Education and Continuing Education classes

The Economic Development Center houses continuing education, business and industry training, and adult education programs. (2002) with 26,855 Sq. ft. In addition to these functions, the facility also serves as a regional operations center for the Technical College System of Georgia's Quick Start program. The center is located at 100-A Brinson Road in Vidalia. The Economic Development Center is located approximately one block off of U.S. Highway 280, and is 3.7 miles from Southeastern Tech's Vidalia Campus.

The Johnson County Extension Center is located at 21 Cedar Creek Drive in Wrightsville, Georgia. This location is approximately 1 mile southeast of downtown Wrightsville off of GA Highway 57 and is 25 miles from the Swainsboro Campus. (2007) 4,179 Sq. ft. It serves as an extension location for selected credit courses. Extension Campus Houses Credit Classrooms/labs, offices, and Continuing Education classes

The Jim L. Gillis Workforce Development Center is located at 429 Parkview Drive Soperton, Georgia. This location is approximately 2 miles north of Soperton off GA Highway 15 and is 20 miles from the Vidalia Campus (2001) 4,000 Sq. ft.. This center provides adult education classes and services to residents of Treutlen County. It also serves as an extension location for selected credit courses.

The Candler County Center is located at 25 West Daniel Street in Metter, Georgia 25 miles from the Swainsboro Campus. (2001) with 6,100 Sq. ft. This center provides adult education classes and services to residents of Candler County. It also serves as an extension location for selected credit courses.

The Jenkins County Center is located at 210 Hendrix Street in Millen, Georgia 35 miles from the Swainsboro Campus (1995) with 3,500 Sq. ft. This center provides adult education classes and services to residents of Jenkins County. It also serves as an extension location for selected credit courses.

SECTION I: GENERAL INFORMATION

The Johnson County Center is located at 37 Georgia Avenue in Wrightsville, Georgia, 30 miles from the Swainsboro Campus (1999) with 2,400 Sq. ft. This center provides adult education classes and services to residents of Johnson County.

The Tattnall-Reidsville Adult Learning Center is located at 123 Tattnall Street in Reidsville, just off of U.S. Highway 280 (2001) with 4,591 Sq. ft. This center provides adult literacy classes and services to residents of northern Tattnall County. The building is owned and maintained by Tattnall County for Southeastern Tech's use. The center is located approximately 17 miles from the college's Vidalia Campus.

The Montgomery County Adult Literacy Center is located at 251 S. Fulton Street in Mt. Vernon. This center provides adult literacy services to residents of Montgomery County. This facility is owned and maintained by Montgomery County for Southeastern Tech's use in 2002 with 4,176 Sq. ft. The center is conveniently located just off of U.S. Highway 280 and is approximately 14.5 miles from the college's Vidalia Campus.

The Vidalia Commercial Truck Driving Facility is located on Harris Industrial Boulevard in Vidalia in the Toombs Industrial Park in 2003 with 2,688 Sq. ft. The property is located a short 1.6 miles from Southeastern Technical College's Vidalia Campus. It houses the Commercial Truck Driving program.

SECTION I: GENERAL INFORMATION

Institutional Goals

The goals that will help us realize our vision and mission are to:

Guarantee student access and the opportunity for success.

Objectives:

1. Provide dual enrollment opportunities and other partnerships with local secondary school systems.
2. Provide services to improve enrollment, retention, graduation, and placement rates.
3. Provide adult education opportunities to improve educational advancement.
4. Provide options and collaborations with business and industry, other institutions of higher learning, and other state agencies.
5. Assure the quality of instruction to enhance student success.
6. Assure student learning is achieved.
7. Provide student and academic support services to enhance student success.

Build Southeastern Georgia's workforce for economic vitality.

Objectives:

1. Provide economic development and community services that support attracting business and industry, creating, expanding, and retaining jobs.
2. Support innovation, creativity, and entrepreneurship.
3. Provide Certified Work Ready program.
4. Provide credit programs to match workforce needs/strategic industries.

Enhance the College's organizational development in terms of its educational delivery, facilities and equipment, and internal workforce.

Objectives:

1. Maximize efficiency and effectiveness in the delivery of programs and services.
2. Expand human resources services to enhance internal workforce.
3. Provide safe and secure campuses.
4. Manage financial resources efficiently and effectively.
5. Manage facilities and construction processes to maximize conservation and environmental initiatives, space utilization, campus efficiencies, and capital outlay planning.
6. Assure that the College maintains innovative, cutting-edge technology and equipment to improve operations and enhance student learning.
7. Assure that the administration of the College is customer focused in attaining the vision, reaching the goals and supporting the implementation of the strategic plan.

Improve the visibility, recognized value, and support of Technical Education, Adult Education, and Workforce Training for all citizens in Southeastern Georgia.

Objectives:

1. Brand and sell the College as a first choice, first class educational experience with positive employment and education outcomes.
2. Maintain COC and appropriate program accreditations.
3. Build private financial support and increase alternative funding sources for the College.
4. Provide a system of research and assessment to present value-added data for monitoring, analyzing, planning, and decision making.

SECTION I: GENERAL INFORMATION

History

During the 1987 session, the Georgia Legislature appropriated \$45,000 for the preliminary plans for a technical institute to be located in Southeast Georgia. During the 1988 session, an additional appropriation of \$5,410,000 was approved for the construction of the new institute. Other state funds totaling \$445,000 were added to the project. Additionally, the citizens of Toombs County, through a local option sales tax, contributed \$1,689,000 to the project for the construction of a 776-seat auditorium. The total funds invested in the project amounted to \$7,553,000.

Construction of Southeastern Technical Institute began in 1988. A local Board of Directors was sworn into office in July 1989. By November 1989, the Southeastern Technical Institute Foundation was incorporated. Although the facilities were still under construction, the first diploma program, Practical Nursing began in January 1990. Upon completion of construction in 1990, a dedication ceremony was held. Governor Joe Frank Harris delivered the dedicatory address.

October 1, 1990, marked the official opening of the new facility. Forty-six students enrolled in four diploma programs: Practical Nursing, Information and Office Technology, Accounting, and Cosmetology. An additional 32 students enrolled in Developmental Studies. In March 1991, nine Practical Nursing students graduated in Southeastern Tech's first commencement exercise. The institute remained constant in adding more programs to respond to the needs of the community.

In 1992, Southeastern Tech established a campus in Glennville. After having leased facilities in Glennville for a number of years, on June 14, 1994 the City of Glennville gave Southeastern Tech three buildings and the land the campus buildings are situated. Also of significance to the Glennville Campus was the award of a Community Block Development Grant to Tattnall County for the construction of a Technology Center. This facility is located on property adjacent to the Glennville campus and is utilized by Southeastern Technical College for adult literacy training, continuing education, and business and industry training.

On February 5, 1998, the State Board of the Technical College System of Georgia authorized the purchase of a building located in Vidalia to be used as the College's Economic Development Center. The building had been leased by Southeastern Technical College since 1994. Renovation of this facility was completed in October 2002. The facility also houses regional operations for the Technical College System of Georgia's Quick Start program, an organization which serves the training needs of new and expanding industries.

In 2000, the school had a 43% increase in enrollment over 1999 and a 257% increase in the continuing education department in two years. Beyond growth was the tremendous positive effect the institution has experienced through the development of a more technically skilled workforce.

On December 7, 2000, Southeastern Technical Institute officially changed its name to Southeastern Technical College. The name change was a facet of Governor Roy Barnes' Education Reform Bill. This also allowed STC to offer associate degrees and receive formula-funding based on enrollment from the State of Georgia.

SECTION I: GENERAL INFORMATION

Southeastern Technical College celebrated ten years of service to Toombs, Tattnall, and Montgomery counties while promoting the theme, "A Decade of Difference." Southeastern Technical College continued to increase enrollment and add new programs.

In 2001, the Toombs County Development Authority conveyed 15.92 acres of land in the Toombs County Industrial Park to Southeastern Technical College for the purpose of establishing a Commercial Truck Driving facility. The Commercial Truck Driving Facility was completed in June 2003.

A landmark occasion for adult literacy efforts occurred in September 2001 with the opening of the Reidsville-Tattnall County Adult Literacy Center. The facility, funded by a Community Development Block Grant (CDBG), provided a permanent home for adult literacy programs and services in Reidsville.

Construction began in November 2001 on the Medical Technology Building on the main campus. Due to unprecedented enrollment growth, funds were appropriated to construct an addition to this project.

In FY 2001, Southeastern Technical College served over 1900 students in credit programs alone. The College grew to more than 50 programs in business, health, technical and industrial fields. Online classes became available at Southeastern Technical College through the Georgia Virtual Technical College. Barriers of time and distance diminished as obstacles that could hinder students from receiving the education they desire and deserve.

Following the success in establishing a permanent home for adult literacy programs and services in Reidsville was the establishment of the Montgomery County Adult Literacy Center in Mt. Vernon. The construction of this facility was also established through a CDGB to Montgomery County. The Center opened in June 2002.

During FY 2002, the College had a major impact on the community as literacy classes were now able to be offered at four different sites. As previously stated, construction began on the regional medical technology building; construction started on the Glennville Campus renovations; STC added additional parking on the Vidalia campus, as well as completed the final phases for the new Economic Development Center in Vidalia.

Southeastern Technical College has experienced phenomenal growth during its relatively brief existence. Space constraints on the Vidalia campus were alleviated in January 2004 with the official opening of the Medical Technology Building.

The hallmark of the success of Southeastern Technical College is the strong local support from its service area. This modern facility stands as a finely sculptured monument to the economic growth and development of the entire region. Adult students, regardless of sex, race, age, color, religion, national origin, marital status, academic or economic disadvantage or disability may capitalize on the enhanced opportunities offered by technical education. Technical education has clearly become a desirable, attractive alternative for education for the citizens of Georgia.

In January 2008, Commissioner Ron Jackson of the Technical College System of Georgia charged a taskforce to measure the feasibility of merging two technical colleges as the first of

SECTION I: GENERAL INFORMATION

several mergers across the state. In August 2008, a plan to merge the first two colleges was approved. At its September 2008 meeting, the State Board of Technical and Adult Education determined that merger strategies were necessary throughout the state and gave approval to proceed with the mergers proposed by the Technical College System of Georgia.

Commissioner Jackson met with the Local Boards of Southeastern Technical College and Swainsboro Technical College to discuss their role during the merger process. Dr. Ray Perren, Assistant Commissioner of the TCSG, met with the college presidents to prioritize and outline the tasks before them. Southeastern and Swainsboro formed a combined Steering Committee of senior staff from both colleges to lead and manage the merger process.

Southeastern Technical College and Swainsboro Technical College have had a close working relationship since the opening of Southeastern Tech in 1990. In fact, Southeastern Tech was formed from Swainsboro Tech's service delivery area. The colleges are located only 32 miles apart; therefore, they often have transient students from one another and share many of the same community supporters, business partnerships and resources. They provide more than 15 similar programs, with many of the programs using the same books and instructional materials. The merger will provide benefits to the communities served by creating a strong, single presence with increased visibility, and a unified mission. The merged college will better utilize limited resources to be more responsive to the needs of business and industry. More efficient resource utilization will allow current programs to be expanded and free up resources to add new programs as needed in our continually changing economy. As one educational entity in the communities, the merged college will better serve the communities with stronger partnerships, decreased competition for resources and fundraising, elimination of duplication, and more visibility as a stronger institution. A merged institution would further enhance the programs and services provided to all communities served and broaden the opportunities in many areas.

On July 1, 2009, Swainsboro Technical College and Southeastern Technical College officially merged to form the new Southeastern Technical College, which will serve Candler, Emanuel, Jenkins, Johnson, Montgomery, Tattnall, Toombs, and Treutlen counties.

SECTION I: GENERAL INFORMATION

Accreditation/Certification/Licensure/Approval

Southeastern Technical College is a unit of the Technical College System of Georgia.

<http://www.tcsq.edu/>

Southeastern Technical College is accredited by the Commission on Colleges of the Southern Association of Colleges and Schools to award Associate Degrees, Diplomas, and Technical Certificates of Credit. Contact the Commission on Colleges at 1866 Southern Lane, Decatur, GA 30033-4097 or call (404) 679-4500 for questions about the accreditation of Southeastern Technical College. www.sacscoc.org. *Inquiries such as admission requirements, financial aid, educational programs, etc., should be addressed directly to Southeastern Technical College and not to the Commission's office. Please direct all questions to: Southeastern Technical College, 3001 E. First Street, Vidalia, GA 30474, 912.538.3100, Fax 912-538-3156.*

- The Practical Nursing program is approved by the Board of Examiners of Licensed Practical Nurses for the State of Georgia, 237 Coliseum Drive, Macon, GA 31217-3858, (478) 207-1629. <http://sos.georgia.gov/plb/lpn/>
- The Certified Nurse Aide program is approved by the Georgia Health Partnership, 1455 Lincoln Parkway East, Suite 750, Atlanta, Georgia 30346-2200. Phone number is 678-527-3010 or 800-414-4358.
- The Medical Assisting Diploma Program is accredited by the [Commission on Accreditation of Allied Health Education Programs \(www.caahep.org\)](http://www.caahep.org) upon the recommendation of the Medical Assisting Education Review Board (MAERB). Commission on Accreditation of Allied Health Education Programs, 1361 Park Street, Clearwater, FL 33756. 727/210-2350
- The Early Childhood Care and Education Paraprofessional Training program is approved by the Georgia Professional Standards Commission, Two Peachtree Street, Suite 6000, Atlanta, GA 30303, (800) 869-7775. The Early Childhood Care and Education Paraprofessional Training program is approved by the Georgia Professional Standards Commission, Two Peachtree Street, Suite 6000, Atlanta, GA 30303, (800) 869-7775. <http://www.gapsc.com/>
- The Child Care Center on the Swainsboro campus is certified as a Center of Distinction by the Georgia Department of Early Care and Learning Bright from the Start Program. <http://www.decal.state.ga.us/>
- Southeastern Technical College is a Certified Cisco Network Academy. <http://www.cisco.com/web/learning/netacad/index.html>
- Southeastern Technical College is a Microsoft IT Academy. The IT Academy provides tools to train students on Microsoft technologies, help them succeed in school, and prepare them for the global economy. The program includes access to a variety of curricula and certifications, software licenses, and a range of instruction from computer basics to high-level programming and architecture. <http://www.microsoft.com/education/msitacademy/default.aspx>
- Emergency Medical Technician graduates are eligible to sit for the National Registry Intermediate Exam.

SECTION I: GENERAL INFORMATION

- Paramedic Technology program graduates are eligible to sit for the Paramedic Exam of the National Registry of Emergency Medical Technicians (NREMT), Rocco V. Morando Building, 6610 Bush Blvd, P.O. Box 29233, Columbus, OH 43229, (614) 888-4484. www.nremt.org
- The Technical College System of Georgia's Cosmetology curriculum is approved by the Georgia State Board of Cosmetology, <http://sos.georgia.gov/plb/cosmetology/>. Graduates are eligible to take the Master Cosmetologist Licensure Exam.
- The Surgical Technology program is accredited by the Commission on Accreditation of Allied Health Education Programs (CAAHEP) upon recommendation of the Accreditation Review Council on Education in Surgical Technology and Surgical Assisting (ARC/STSA) (www.arcst.org). Graduates are eligible to take the National Certification Exam from the National Board for Surgical Technologist and Surgical Assistants (NBSTSA) CAAHEP, 1361 Park Street, Clearwater, FL 33756, (727) 210-1300. www.caahep.org ARC-ST - www.arcst.org
- The Radiologic Technology program is accredited by the Joint Review Committee on Education in Radiologic Technology (JRCERT), 20 North Wacker Drive, Suite 2850, Chicago, IL 60606-3182, (312) 704-5300, www.jrcert.org. Graduates are eligible to take the National Registry Examination sponsored by the American Registry of Radiologic Technologists.
- The Clinical Laboratory Technology program is accredited by the National Accrediting Agency for Clinical Laboratory Sciences (NAACLS), 5600 N. River Road, Suite 720, Rosemont, Illinois 60018-5119, (773) 714-8880. <http://www.naacls.org>
- The Pharmacy Technology program is accredited by the American Society of Health-System Pharmacists, 7272 Wisconsin Avenue, Bethesda, MD 20814, (301) 657-3000, www.ashp.org. Graduates are eligible to take the National Pharmacy Technician Certification Exam.
- The Dental Hygiene program is accredited by the Commission on Dental Accreditation (CODA) - American Dental Association (ADA). The Commission is a specialized accrediting body recognized by the United States Department of Education. The Commission on Dental Accreditation can be contacted at (312) 440-4653 or at 211 East Chicago Avenue, Chicago, IL 60611. <http://www.ada.org/prof/ed/accred/commission/index.asp> Graduates are eligible to take the ADA National Board Dental Hygiene Examination and the CRDTS National Dental Hygiene Examination.
- In addition, Southeastern Technical College is a member of the following organizations:
 - The American Association of Collegiate Registrars and Admissions Officers
 - The American Association of Community Colleges
 - The National Association of College and University Business Officers
 - The National Council on Student Development
 - The Council for Higher Education Accreditation

SECTION II

ENROLLMENT

SECTION II: ENROLLMENT

Credit Enrollment (Unduplicated)

Headcount, Credit Hours and FTE (Full-Time Equivalency)

		2009-10
		FY10
Headcount	*	3243
		FY10
Credit Hours		75662
		FY10
FTE		1680

Source: TCSG Data Center EOY Total Rpt

* Estimated - Banner boxes were not merged until after Sum 09

Enrollment and Credit Hours by Campus

Campus	2009-10	
	FY10	
	* Enroll	Credit Hrs
Vidalia	2,134	50,901
Swainsboro	1,021	23,626
Glennville	88	1,135
TOTAL	3,243	75,662

Source: TCSG Data Center DC#135

* Estimated - Banner boxes were not merged until after Sum 09

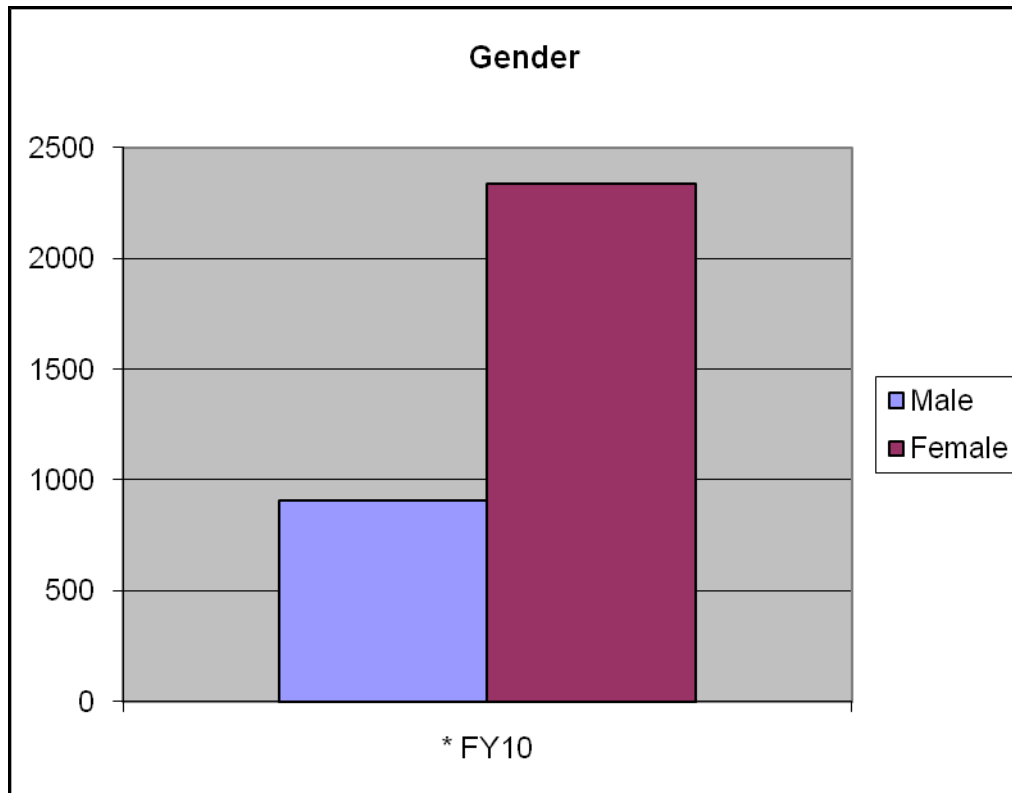
SECTION II: ENROLLMENT

Gender

	2009-10
	* FY10
Male	905
Female	2338
TOTAL	3243

Source: TCSG Data Center EOY Gender Rpt

* Estimated - Banner boxes were not merged until after Sum 09



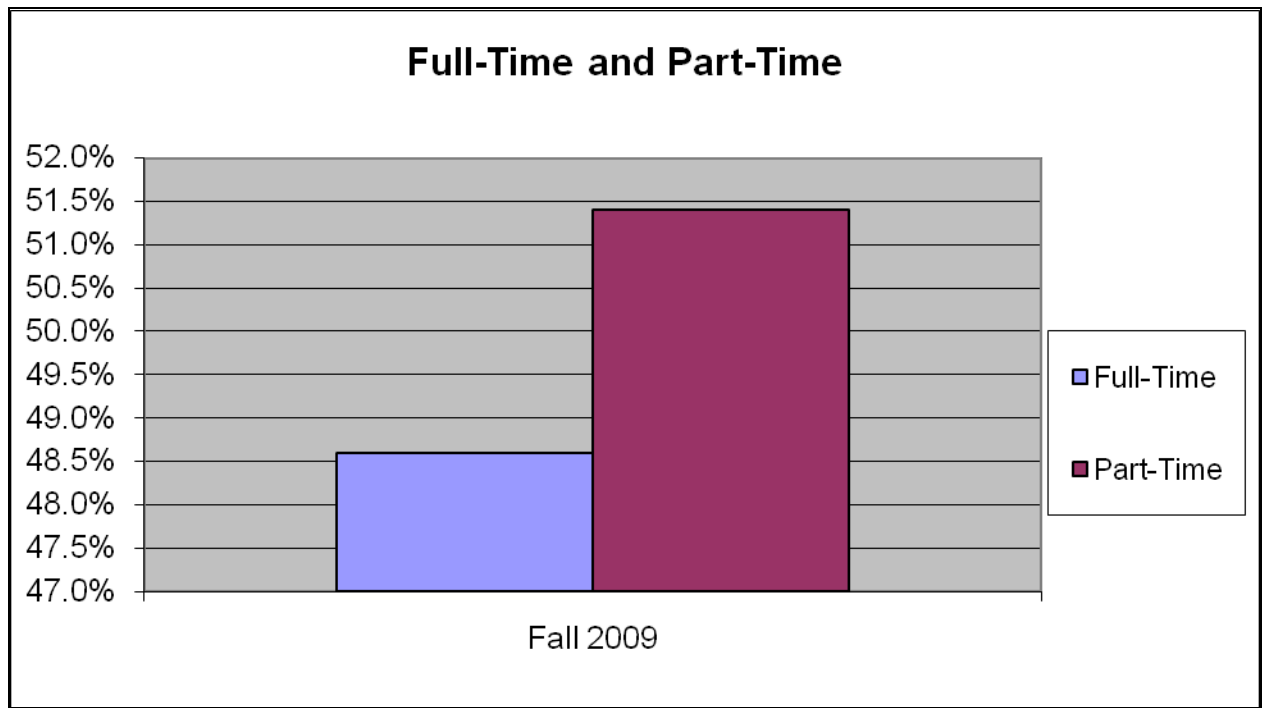
SECTION II: ENROLLMENT

Full-Time and Part-Time

(Based on Fall Quarter Enrollment)

	FY10
	Fall 2009
Full-Time	48.6%
Part-Time	51.4%
TOTAL	100.0%

Source: TCSG Data Center EOY FTPT Rpt



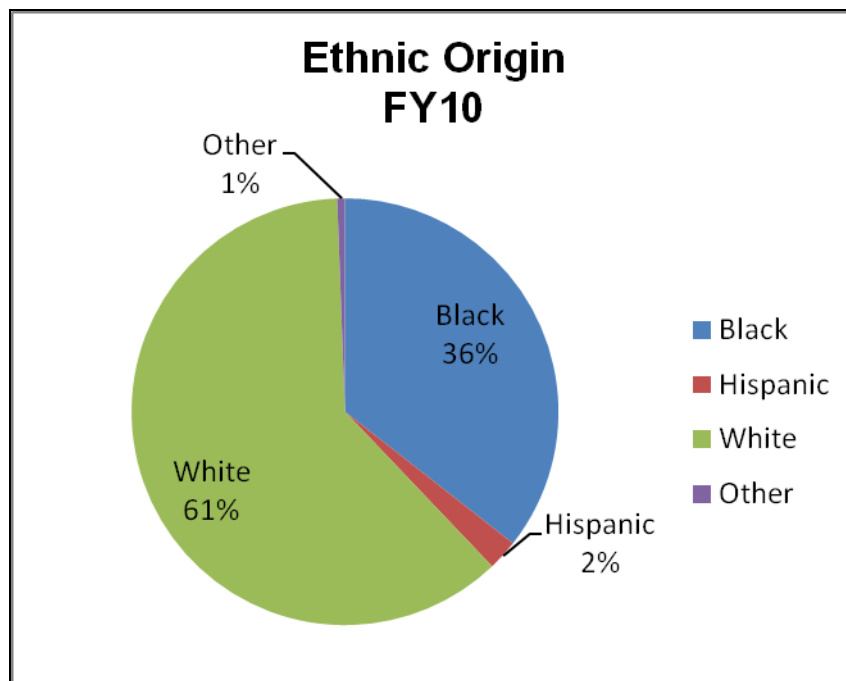
SECTION II: ENROLLMENT

Race/Ethnic Origin

	Total	American Indian		Asian		Black		Hispanic		White		Nonresident Alien		Multi-Racial		UnKnown	
		No.	%	No.	%	No.	%	No.	%	No.	%	No.	%	No.	%	No.	%
* FY10	3,243	3	0.1%	3	0.1%	1,154	35.6%	75	2.3%	1,995	61.5%	1	0.0%	6	0.2%	6	0.2%

Source: TCSG Data Center EOY Race Rpt

* Estimated - Banner boxes were not merged until after Sum 09



SECTION II: ENROLLMENT

County of Residence

	FY 2010 2009-2010	
County	##	%
Appling	72	2.2%
Atkinson	1	0.0%
Bacon	4	0.1%
Baldwin	0	0.0%
Barrow	0	0.0%
Bartow	3	0.1%
Berrien	1	0.0%
Bibb	3	0.1%
Bleckley	3	0.1%
Brantley	1	0.0%
Brooks	0	0.0%
Bryan	3	0.1%
Bulloch	34	1.0%
Burke	44	1.4%
Butts	0	0.0%
Calhoun	0	0.0%
Camden	0	0.0%
* Candler	95	2.9%
Carroll	1	0.0%
Catoosa	1	0.0%
Charlton	0	0.0%
Chatham	7	0.2%
Chattooga	0	0.0%
Cherokee	0	0.0%
Clarke	0	0.0%
Clayton	2	0.1%
Clinch	1	0.0%
Cobb	1	0.0%
Coffee	3	0.1%
Colquitt	1	0.0%
Columbia	1	0.0%
Cook	0	0.0%
Coweta	0	0.0%
Crawford	0	0.0%
Crisp	0	0.0%
Dawson	0	0.0%
Decatur	0	0.0%
DeKalb	0	0.0%
Dodge	3	0.1%
Dougherty	0	0.0%
Douglas	1	0.0%
Early	0	0.0%

Effingham	2	0.1%
Elbert	0	0.0%
* Emanuel	544	16.8%
Evans	27	0.8%
Fannin	0	0.0%
Fayette	0	0.0%
Floyd	0	0.0%
Forsyth	0	0.0%
Franklin	0	0.0%
Fulton	2	0.1%
Gilmer	0	0.0%
Glascok	3	0.1%
Glynn	2	0.1%
Gordon	0	0.0%
Grady	0	0.0%
Gwinnett	2	0.1%
Habersham	0	0.0%
Hall	0	0.0%
Haralson	0	0.0%
Harris	0	0.0%
Hart	0	0.0%
Henry	4	0.1%
Houston	2	0.1%
Jackson	0	0.0%
Jeff Davis	121	3.7%
Jefferson	64	2.0%
* Jenkins	89	2.7%
* Johnson	97	3.0%
Jones	0	0.0%
Lamar	1	0.0%
Laurens	36	1.1%
Lee	0	0.0%
Liberty	14	0.4%
Long	3	0.1%
Lowndes	2	0.1%
Lumpkin	0	0.0%
Macon	1	0.0%
Madison	0	0.0%
Meriwether	0	0.0%
McDuffie	0	0.0%
Mitchell	0	0.0%
Monroe	0	0.0%
* Montgomery	243	7.5%
Morgan	0	0.0%
Muscogee	0	0.0%

SECTION II: ENROLLMENT

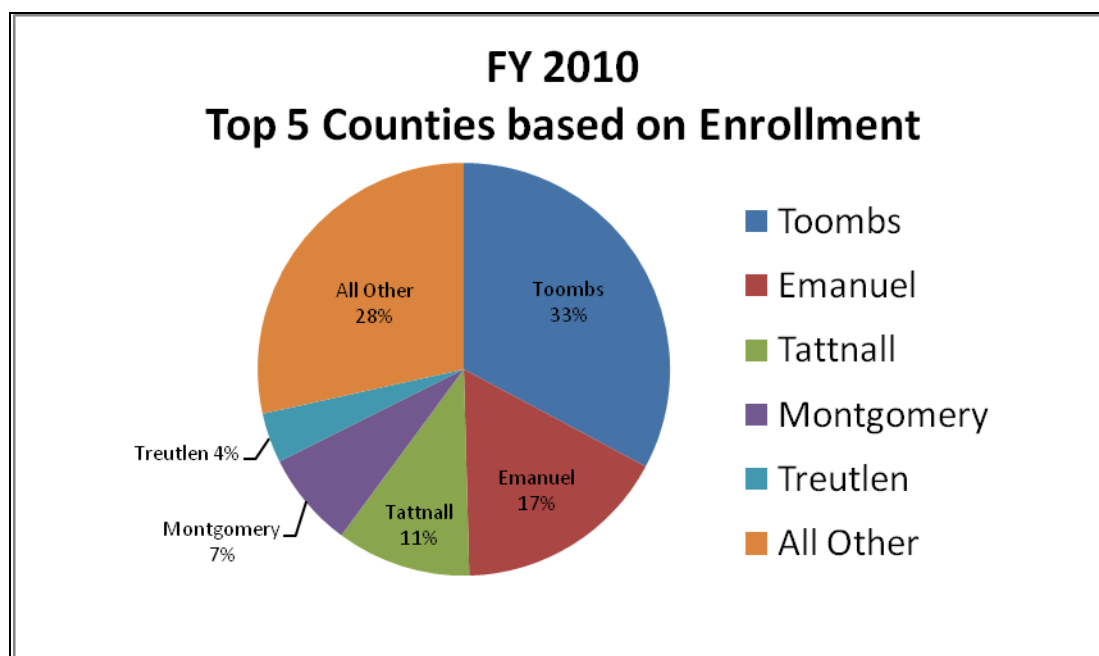
Newton	0	0.0%
Oconee	0	0.0%
Oglethorpe	0	0.0%
Paulding	0	0.0%
Peach	0	0.0%
Pickens	0	0.0%
Pierce	1	0.0%
Pike	0	0.0%
Polk	0	0.0%
Putnam	0	0.0%
Rabun	0	0.0%
Richmond	7	0.2%
Rockdale	0	0.0%
Screven	7	0.2%
Spalding	0	0.0%
Stephens	0	0.0%
Sumter	0	0.0%
Talbot	0	0.0%
* Tattnall	342	10.5%
Taylor	0	0.0%
Telfair	39	1.2%

Thomas	0	0.0%
Tift	0	0.0%
* Toombs	1064	32.8%
Towns	0	0.0%
* Treutlen	127	3.9%
Troup	0	0.0%
Turner	0	0.0%
Twiggs	2	0.1%
Upson	0	0.0%
Walker	1	0.0%
Walton	1	0.0%
Ware	2	0.1%
Washington	17	0.5%
Wayne	8	0.2%
Wheeler	64	2.0%
Wilkinson	1	0.0%
Worth	0	0.0%
Unknown	15	0.5%
Out of State:	0	0.0%
TOTAL	3243	100.0%

* County is in the College's Service Delivery Area (SDA)

Source: TCSG Data Center Rpt #DC 122

* Estimated - Banner boxes were not merged until after Sum 09



SECTION II: ENROLLMENT

Student Age Distribution

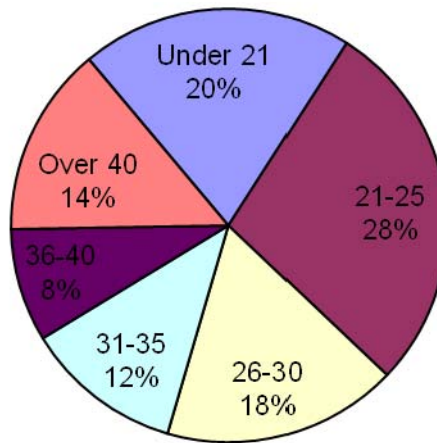
(Based on Fall Quarter Enrollment)

	2009-10	
	* FY10	
	No.	%
Under 21	655	20.2%
21 - 25	908	28.0%
26 - 30	566	17.5%
31 - 35	382	11.8%
36 - 40	273	8.4%
Over 40	459	14.2%
TOTAL	3243	100.0%

Source: TCSG Data Center EOY Rpt Age

* Estimated - Banner boxes were not merged until after Sum 09

Credit Enrollment by Age Group FY 2008



SECTION II: ENROLLMENT

Student To Faculty Ratio

	Fall 2009	Fall 2010
Enrollment	1975	1995
FTE	1680	1461
# Full-time Instructors	59	61
# Adjunct Instructors	56	52
Instructor FTE	77.48	78.16
Student/Faculty Ratio	21.68	18.69

Student/Faculty Ratio: Calculated by dividing Student Enrollment F.T.E. by Faculty F.T.E.

Student Enroll & FTE: From TCSG DC 126.

Faculty FTE: Calculated by full-time faculty plus 1/3 part-time faculty.

SECTION III

PROGRAM ENROLLMENT

SECTION III: PROGRAM ENROLLMENT

Program Enrollment

	2009-10 * FY 10
Associate Degrees	
Accounting	23
Business Administrative Technology	22
Clinical Laboratory Technology	17
Computer Support Specialist	9
Criminal Justice Technology	36
Dental Hygiene	19
Early Childhood Care/Education	33
Electronics Technology	15
Forestry Technology	7
Game and Fish Preserve Management	4
Internet Specialist - Web Site Design	7
Management and Supervisory Development	15
Marketing Management	5
Networking Specialist	11
Diplomas	
Accounting	53
Air Conditioning Technology	40
Business Administrative Technology	169
Business Office Technology	1
Computer Support Specialist	53
Cosmetology	145
Criminal Justice Technology	137
Drafting Technology	2
Early Childhood Care/Education	98
Electrical Construction and Maintenance	93
Electronics Fundamentals	3
Electronics Technology	40
Forestry Technology	18
Game and Fish Preserve Management	20
Industrial Electrical Technology	16
Internet Specialist - Web Site Design	29
Management and Supervisory Development	50
Marketing Management	20
Medical Assisting	191
Networking Specialist	31
Paramedic Technology	17
Pharmacy Technology	51
Practical Nursing	103
Radiologic Technology	23
Surgical Technology	56
Visual Communications	2
Welding and Joining Technology	81

SECTION III: PROGRAM ENROLLMENT

Technical Certificates of Credit (TCC)	
Administrative Support Assistant	1
Air Conditioning Technician Assistant	4
Certified Nurse Aide	251
Child Care Assisting	3
Child Development Associate I	8
Cisco Network Specialist	7
Commercial Truck Driving	47
CompTIA A+ Certified Preparation	3
Computer Repair Technician	1
Cosmetology Instructor Training	1
Electrical Systems Assistant	1
Emergency Medical Technician Intermediate	31
Flat Shielded Metal Arc Welder	29
Flux Cored ARC Welder	1
Gas Metal Arc Welder Fabricator	19
Gas Tungsten Arc Welder	6
General Office Assistant	2
Healthcare Assistant	518
Healthcare Science	111
Help Desk Assistant	1
Human Resource Management Specialist	4
Imaging Science Services Assistant	132
Internet Specialist Web Site Designer	2
Internet Specialist Web Site Designer Assistant	1
Law Enforcement Investigations Assistant	43
Law Enforcement Technician	13
Management and Leadership Specialist	1
Medical Administrative Technician	72
Medical Office Assistant	5
Microsoft Office Application Professional	2
Network Administrator	3
Overhead Shielded Metal Arc Welder	5
Payroll Accounting Specialist	1
Shampoo Technician	12
Small Business Management Specialist	1
Supervisor/Management Specialist	1
Technical Communication	13
Wildlife Preserve Assistant	20
Institutionally Accepted	13
Special Admit	7
Transient	23
TOTAL	3184

Source: TCSG Data Center Rpt #DC180

* FY10 numbers are only listed for Fall 09, Wnt 10, and Spr 10

Sum 09 not included due to Banner box differences

SECTION IV

PROGRAM LICENSURE

SECTION IV: PROGRAM LICENSURE

Program Licensure Pass Rates (Cumulative)

	2009-10
Program	FY10
Certified Nurse Aide	Not Available
Clinical Laboratory Technology	100%
Commercial Truck Driving	100%
Cosmetology	100%
Dental Hygiene	100%
* Emergency Medical Technician	88%
* Paramedic Technology	100%
Pharmacy Technology	100%
Practical Nursing	94%
Radiologic Technology	100%

Source: Director of Allied Health Accreditation

** Students are allowed a maximum of six attempts to complete all sections of the exam; therefore, they are not counted as failing until all attempts have been exhausted. Also, students are reported during the time period in which the test is taken, not necessarily the graduating term.

SECTION V

GRADUATES

SECTION V: GRADUATES

Awards Conferred By Program

	2009-10 FY10
Associate Degrees	
Accounting	7
Business Administrative Technology	4
Clinical Laboratory Technology	4
Computer Support Specialist	3
Criminal Justice Technology	7
Dental Hygiene	7
Drafting Technology	1
Early Childhood Care/Education	2
Electronics Technology	3
Forest Technology	2
Game and Fish Preserve Management	1
Management and Supervisory Development	4
Marketing Management	1
Networking Specialist	7
Diplomas	
Accounting	5
Air Conditioning Technology	7
Business Administrative Technology	27
Business Office Technology	1
Computer Support Specialist	8
Cosmetology	35
Criminal Justice Technology	10
Drafting Technology	2
Early Childhood Care/Education	8
Electrical Construction and Maintenance	9
Electronics Technology	2
Forest Technology	5
Industrial Electrical Technology	2
Internet Specialist - Web Site Design	1
Management and Supervisory Development	3
Marketing Management	1
Medical Assisting	24
Networking Specialist	3
Paramedic Technology	14
Pharmacy Technology	4
Practical Nursing	53
Radiologic Technology	10
Surgical Technology	9
Visual Communications	3
Welding and Joining Technology	5

SECTION V: GRADUATES

Technical Certificates of Credit (TCC)	
Administrative Support Assistant	25
Advanced CAD Operator-Architectural	1
Air Conditioning Repair Specialist	1
Air Conditioning Technician Assistant	1
Basic Electrical Technician	1
CAD Operator Architectural	1
Certified Nurse Aide	103
Child Care Assisting	7
Child Development Associate I	2
Cisco Network Specialist	3
Commercial Truck Driving	51
Commercial Wiring	5
CompTIA A+ Certified Preparation	4
Computer Aided Drafting Specialist	1
Computer Repair Technician	1
Cosmetology Instructor Training	1
Drafting Aide	1
Early Childhood Program Administration	1
Electrical Contracting Technician	7
Electrical Systems Assistant	6
Emergency Medical Technician Intermediate	10
Flat Shield Metal Arc Welder	26
Flux Cored ARC Welder	1
Gas Metal Arc Welder Fabricator	18
Gas Tungsten Arc Welder	10
General Office Assistant	23
Healthcare Assistant	49
Healthcare Science	1
Help Desk Assistant	2
Human Resource Management Specialist	3
Imaging Science Services Assistant	6
Internet Specialist Web Site Designer	1
Internet Specialist Web Site Designer Assistant	1
Law Enforcement Investigations Assistant	40
Law Enforcement Technician	7
Medical Administrative Technician	29
Medical Office Assistant	6
Microsoft Excel Application User	5
Microsoft Office Application Professional	15
Microsoft Word Application Professional	12
Overhead Shielded Metal Arc Welder	4
Payroll Accounting Specialist	8
Phlebotomy Technician	15
Residential Wiring Technician	6
Shampoo Technician	11
Small Business Entrepreneur	1
Supervisor/Management Specialist	1
Wildlife Preserve Assistant	4
TOTAL	842

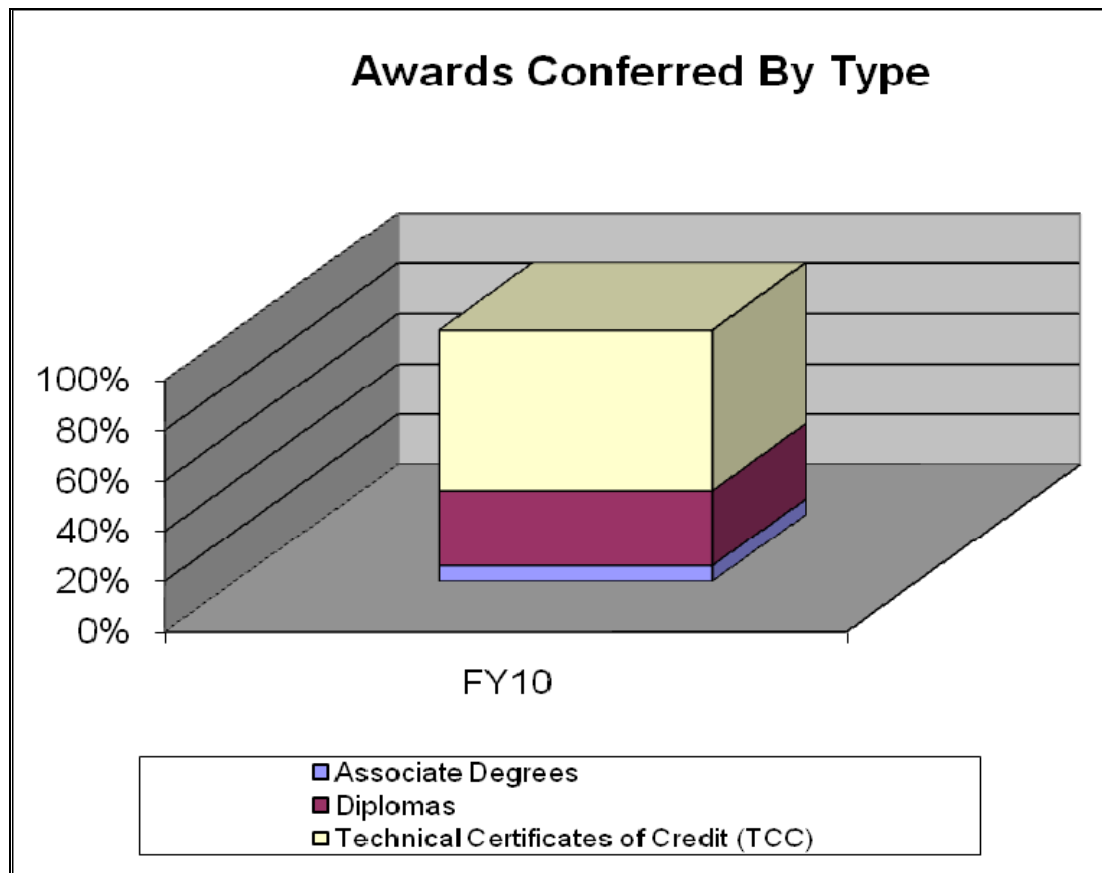
Source: TCSG Data Center Rpt #DC109

SECTION V: GRADUATES

Awards Conferred By Type

	2009-10
	FY10
Associate Degrees	53
Diplomas	251
Technical Certificates of Credit (TCC)	538
TOTAL	842

Source: TCSG Data Center Rpt #DC109



SECTION V: GRADUATES

Unduplicated Graduates & Total Placement Rates

	2009-10
Employment Status	FY10
Employed in Field	234
Military	2
Employed in Related Field	17
Employed in Unrelated Field	39
Employed in Field & Continued Education	51
Employed in Related Field & Continued Education	20
Employed in Unrelated Field & Continued Education	72
Continued Education	217
Not Employed	24
Not Available for Employment	14
Refused Employment	0
Status Unknown	8
Total Awards Conferred (duplicated)	698
Placed in Field Rate * (%)	82.0%
Total Placement Rate ** (%)	96.4%

Source: TCSG Data Center Report #DC108

* Placed in Field Rate = (Emp in Field + Military + Emp in Rel Field + Emp in Field & Cont Educ + Emp in Rel Field & Cont Educ)/Total Grads - (Emp Unrel Field & Cont Educ + Cont Ed + Not Avail)

** Total Placement Rate = (Emp in Field + Military + Emp in Rel Field + Emp Unrel Field + Emp in Field & Cont Educ + Emp Rel Field & Cont Educ + Emp Unrel Field & Cont Educ + Cont Educ)/(numerator + Not Emp)

SECTION V: GRADUATES

**Total Placement Rates by PAS Program Area
FY 2010**

Program <i>(By Major, with Total for each PAS Program Area)</i>	Total Placement Rate	Total Awards (dup.)	Empld In Field	Military	Empld in Rel Field	Empld in Unrel Field	Empld in Field & Cont Ed	Empld in Rel Field & Cont Ed	Empld in Unrel Field & Cont Ed	Cont Educ	Not Empld	Unavail for Emplmt	Refused Emplmt	Status Unknown
Accounting (AC02)	100.0%	5	0	0	0	1	2	1	0	1	0	0	0	0
Accounting (AC03)	100.0%	7	4	0	1	1	0	0	1	0	0	0	0	0
Payroll Accounting Specialist (5AP1)	100.0%	8	0	0	0	0	2	1	2	3	0	0	0	0
Accounting	100.0%	20	4	0	1	2	4	2	3	4	0	0	0	0
Air Conditioning Repair Specialist (AI01)	100.0%	1	0	0	0	0	0	0	0	1	0	0	0	0
Air Conditioning Technician Assistant (AX01)	100.0%	1	0	0	0	0	0	0	0	1	0	0	0	0
Air Conditioning Technology (AI02)	100.0%	7	3	0	0	0	0	0	1	3	0	0	0	0
Air Conditioning Technology	100.0%	9	3	0	0	0	0	0	1	5	0	0	0	0
Administrative Support Assistant (5DC1)	92.0%	25	2	0	0	1	2	2	1	15	2	0	0	0
Business Administrative Technology (BAT2)	92.6%	27	4	0	0	3	3	2	0	13	2	0	0	0
Business Administrative Technology (BAT3)	100.0%	4	2	0	0	0	1	0	0	1	0	0	0	0
Business Office Technology (BOT2)	100.0%	1	0	0	1	0	0	0	0	0	0	0	0	0
General Office Assistant (GO01)	91.3%	23	2	0	0	1	1	2	1	14	2	0	0	0
Medical Administrative Technician (MEA1)	100.0%	29	4	0	0	1	2	1	6	15	0	0	0	0
Medical Office Assistant (5DE1)	100.0%	6	1	0	0	1	1	0	1	2	0	0	0	0
Microsoft Excel Application User (5BB1)	100.0%	5	0	0	0	0	1	0	0	4	0	0	0	0
Microsoft Office Application Professional (5CG1)	100.0%	15	2	0	0	1	5	1	0	6	0	0	0	0
Microsoft Word Application Professional (5CH1)	100.0%	12	1	0	0	1	2	1	1	6	0	0	0	0
Business and Office Technology	95.9%	147	18	0	1	9	18	9	10	76	6	0	0	0
Commercial Truck Driving (TU01)	92.2%	51	38	0	1	6	0	0	0	2	4	0	0	0
Commercial Truck Driving	92.2%	51	38	0	1	6	0	0	0	2	4	0	0	0
Cisco Network Specialist (5BG1)	100.0%	3	2	0	0	0	0	0	0	1	0	0	0	0
CompTIA A+ Certified Preparation (5BH1)	100.0%	4	2	0	0	0	0	0	1	1	0	0	0	0
Computer Support Specialist (CMU3)	100.0%	3	2	0	0	0	0	0	1	0	0	0	0	0
Computer Support Specialist (CMU4)	87.5%	8	2	0	0	0	1	1	2	1	1	0	0	0
Help Desk Assistant (5BL1)	100.0%	2	2	0	0	0	0	0	0	0	0	0	0	0
Internet Specialist Web Site Designer (5CO1)	100.0%	1	0	0	1	0	0	0	0	0	0	0	0	0
Internet Specialist Web Site Designer Assistant (5CN1)	100.0%	1	0	0	1	0	0	0	0	0	0	0	0	0
Internet Specialist-Web Site Design (CIW4)	100.0%	1	0	0	1	0	0	0	0	0	0	0	0	0
Networking Specialist (CIN3)	100.0%	7	4	0	0	0	1	0	1	1	0	0	0	0
Networking Specialist (CIN4)	100.0%	3	1	0	0	0	0	0	1	1	0	0	0	0
Computer Information Systems	97.0%	33	15	0	3	0	2	1	6	5	1	0	0	0

SECTION V: GRADUATES

Cosmetology (CS02)	97.1%	35	30	0	0	1	1	0	0	2	1	0	0	0
Cosmetology Instructor Training (YTN1)	100.0%	1	1	0	0	0	0	0	0	0	0	0	0	0
Shampoo Technician (SHT1)	100.0%	11	2	0	0	0	0	0	1	8	0	0	0	0
Cosmetology	97.9%	47	33	0	0	1	1	0	1	10	1	0	0	0
Criminal Justice Technology (CJ02)	90.0%	10	1	0	0	1	0	0	2	5	1	0	0	0
Criminal Justice Technology (CJ03)	100.0%	7	5	0	0	0	0	0	0	2	0	0	0	0
Law Enforcement Investigations Assistant (LEI1)	100.0%	40	0	1	0	0	0	1	8	30	0	0	0	0
Law Enforcement Technician (LEF1)	100.0%	7	0	0	0	0	0	0	1	6	0	0	0	0
Criminal Justice	98.4%	64	6	1	0	1	0	1	11	43	1	0	0	0
Dental Hygiene (DH03)	100.0%	7	7	0	0	0	0	0	0	0	0	0	0	0
Dental Hygiene	100.0%	7	7	0	0	0	0	0	0	0	0	0	0	0
Advanced CAD Operator-Architectural (ACH1)	100.0%	1	1	0	0	0	0	0	0	0	0	0	0	0
CAD Operator Architectural (CAH1)	100.0%	1	1	0	0	0	0	0	0	0	0	0	0	0
Computer Aided Drafting Specialist (CAS1)	100.0%	1	1	0	0	0	0	0	0	0	0	0	0	0
Drafting Aide (DRF1)	100.0%	1	1	0	0	0	0	0	0	0	0	0	0	0
Drafting Technology (DR02)	100.0%	2	2	0	0	0	0	0	0	0	0	0	0	0
Drafting Technology (DR03)	100.0%	1	0	0	0	0	0	0	0	1	0	0	0	0
Drafting	100.0%	7	6	0	0	0	0	0	0	1	0	0	0	0
Child Care Assisting (CH01)	85.7%	7	1	0	0	0	2	0	2	1	1	0	0	0
Child Development Associate I (CDA1)	100.0%	2	0	0	0	0	2	0	0	0	0	0	0	0
Early Childhood Care/Education (OO02)	100.0%	8	4	0	0	1	2	0	0	1	0	0	0	0
Early Childhood Program Administration (OG01)	100.0%	1	0	0	0	0	1	0	0	0	0	0	0	0
Early Childhood Care/Education (OO03)	100.0%	2	2	0	0	0	0	0	0	0	0	0	0	0
Early Childhood Care and Education	95.0%	20	7	0	0	1	7	0	2	2	1	0	0	0
Basic Electrical Technician (BLT1)	100.0%	1	1	0	0	0	0	0	0	0	0	0	0	0
Commercial Wiring (CWO1)	100.0%	5	1	0	0	0	1	1	1	1	0	0	0	0
Electrical Construction and Maintenance (WO02)	100.0%	9	3	0	0	0	1	2	1	2	0	0	0	0
Electrical Contracting Technician (ELN1)	100.0%	7	1	0	0	0	1	1	1	3	0	0	0	0
Electrical Systems Assistant (ELS1)	100.0%	6	1	0	0	0	1	1	1	2	0	0	0	0
Industrial Electrical Technology (IEA2)	100.0%	4	2	0	0	0	0	0	0	2	0	0	0	0
Residential Wiring Technician (RWT1)	100.0%	6	2	0	0	0	1	1	1	1	0	0	0	0
Electrical Construction and Maintenance	100.0%	38	11	0	0	0	5	6	5	11	0	0	0	0
Computer Repair Technician (EU01)	0.0%	1	0	0	0	0	0	0	0	0	1	0	0	0
Electronics Technology (EFA3)	100.0%	3	2	0	0	0	0	0	0	0	0	0	0	1
Electronics Technology (EFA4)	100.0%	2	1	0	0	1	0	0	0	0	0	0	0	0
Electronics and Telecommunications	80.0%	6	3	0	0	1	0	0	0	0	1	0	0	1
Forest Technology (FO02)	100.0%	5	1	0	0	1	1	0	1	1	0	0	0	0
Forest Technology (FO03)	100.0%	2	0	0	0	0	0	1	1	0	0	0	0	0
Game and Fish Preserve Management (GFP3)	100.0%	1	1	0	0	0	0	0	0	0	0	0	0	0
Wildlife Preserve Assistant (WPA1)	100.0%	4	0	0	0	0	0	0	0	4	0	0	0	0
Forestry Technology	100.0%	12	2	0	0	1	1	1	2	5	0	0	0	0
Healthcare Assistant (5CJ1)	91.7%	49	13	0	3	1	2	1	8	16	4	1	0	0
Healthcare Science (HHS1)	100.0%	1	0	0	0	0	0	0	1	0	0	0	0	0
Health Care Assistant	91.8%	50	13	0	3	1	2	1	9	16	4	1	0	0

SECTION V: GRADUATES

Human Resource Management Specialist (5BZ1)	100.0%	3	1	0	1	0	0	1	0	0	0	0	0
Management/Supervisory Development (MS02)	100.0%	3	1	0	0	0	1	1	0	0	0	0	0
Management/Supervisory Development (MS03)	100.0%	4	2	0	1	0	0	0	0	1	0	0	0
Supervisor/Management Specialist (5AZ1)	100.0%	1	0	0	1	0	0	0	0	0	0	0	0
Management-Supervisory Development	100.0%	11	4	0	3	0	1	2	0	1	0	0	0
Marketing Management (MM02)	100.0%	1	1	0	0	0	0	0	0	0	0	0	0
Marketing Management (MM03)	100.0%	1	1	0	0	0	0	0	0	0	0	0	0
Small Business Entrepreneur (SBE1)	100.0%	1	1	0	0	0	0	0	0	0	0	0	0
Marketing Management	100.0%	3	3	0	0	0	0	0	0	0	0	0	0
Medical Assisting (MA02)	91.3%	24	13	0	0	0	2	1	4	1	2	1	0
Medical Assisting	91.3%	24	13	0	0	0	2	1	4	1	2	1	0
Clinical Laboratory Technology (ML03)	100.0%	4	2	0	1	0	1	0	0	0	0	0	0
Phlebotomy Technician (PYP1)	93.3%	15	7	0	0	0	2	0	0	5	1	0	0
Medical Laboratory Technology	94.7%	19	9	0	1	0	3	0	0	5	1	0	0
Emergency Medical Technician Intermediate (EM01)	100.0%	10	6	0	2	0	2	0	0	0	0	0	0
Paramedic Technology (EM02)	100.0%	14	14	0	0	0	0	0	0	0	0	0	0
Paramedic Technology	100.0%	24	20	0	2	0	2	0	0	0	0	0	0
Pharmacy Technology (PH02)	100.0%	4	2	0	0	1	0	0	1	0	0	0	0
Pharmacy Technology	100.0%	4	2	0	0	1	0	0	1	0	0	0	0
Certified Nurse Aide (CNF1)	96.9%	103	10	0	0	7	9	3	18	46	3	4	0
Practical Nursing (PN04)	100.0%	53	36	0	3	1	2	1	1	2	0	7	0
Practical Nursing and Related Programs	97.9%	156	46	0	3	8	11	4	19	48	3	11	0
Imaging Science Services Assistant (ISA1)	100.0%	6	0	0	0	0	0	0	0	6	0	0	0
Radiologic Technology (RT04)	90.0%	10	5	0	0	1	0	0	2	1	1	0	0
Radiologic Technology	93.8%	16	5	0	0	1	0	0	2	7	1	0	0
Surgical Technology (ST02)	100.0%	9	7	0	0	0	0	0	0	2	0	0	0
Surgical Technology	100.0%	9	7	0	0	0	0	0	0	2	0	0	0
Visual Communications (CL02)	66.7%	3	0	0	0	0	0	0	0	2	1	0	0
Visual Communications	66.7%	3	0	0	0	0	0	0	0	2	1	0	0
Flat Shielded Metal Arc Welder (5BR1)	100.0%	26	0	1	0	1	2	3	2	15	0	1	0
Flux Cored ARC Welder (WJS1)	100.0%	1	0	0	0	0	0	0	0	1	0	0	0
Gas Metal Arc Welder Fabricator (5BW1)	100.0%	18	2	1	0	4	2	0	2	3	0	1	0
Gas Tungsten Arc Welder (5BT1)	100.0%	10	1	0	0	1	2	0	1	4	0	1	0
Overhead Shielded Metal Arc Welder (5BU1)	100.0%	4	1	0	0	0	0	0	1	2	0	0	0
Welding and Joining Technology (WJ02)	80.0%	5	1	0	1	1	0	0	0	1	1	0	0
Welding and Joining Technology	98.2%	64	5	2	1	7	6	3	6	26	1	3	0

Source: TCSG Data Center Report #DC112

SECTION VI

FINANCIAL AID

SECTION VI: FINANCIAL AID

Amount of Financial Aid Awards

	2009-10 (FY10)	
	Total Undupl. Recipients	Total Award Amount
State Aid		
HOPE Diploma Tuition	2647	\$2,800,909
HOPE Diploma Fees	2647	\$269,972.40
HOPE Diploma Books	2647	\$546,458
Total Awards		\$3,617,339
HOPE Degree Tuition	132	\$125,560
HOPE Degree Fees	132	\$12,500
HOPE Degree Books	132	\$26,620
Total Awards		\$164,680
HOPE GED Awards	80	\$40,000
GA LEAP Grant	81	\$7,663
Title IV Awards		
Federal PELL Grant	1793	\$4,132,714
Federal FSEOG Grant	250	\$57,450
Federal Work-Study	53	\$93,135
Total Awards		
Total Awards for Year		\$8,112,981
Total Receiving Aid		* 2804 Undup excluding Sum 09

Source: STC Director of Financial Aid

SECTION VII

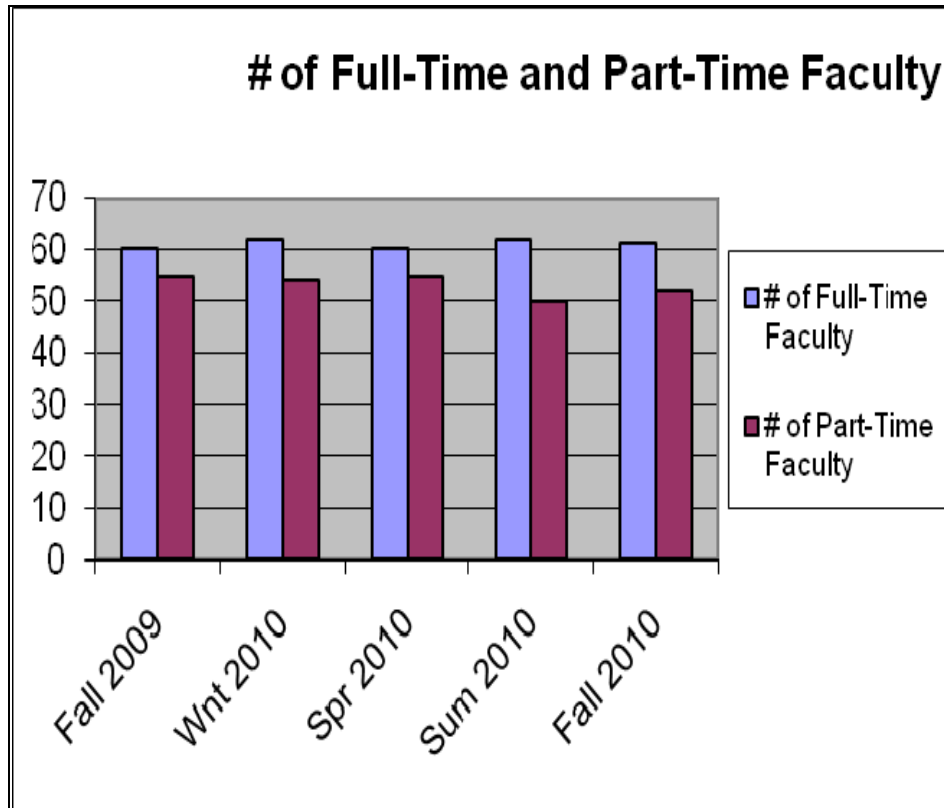
FACULTY AND STAFF

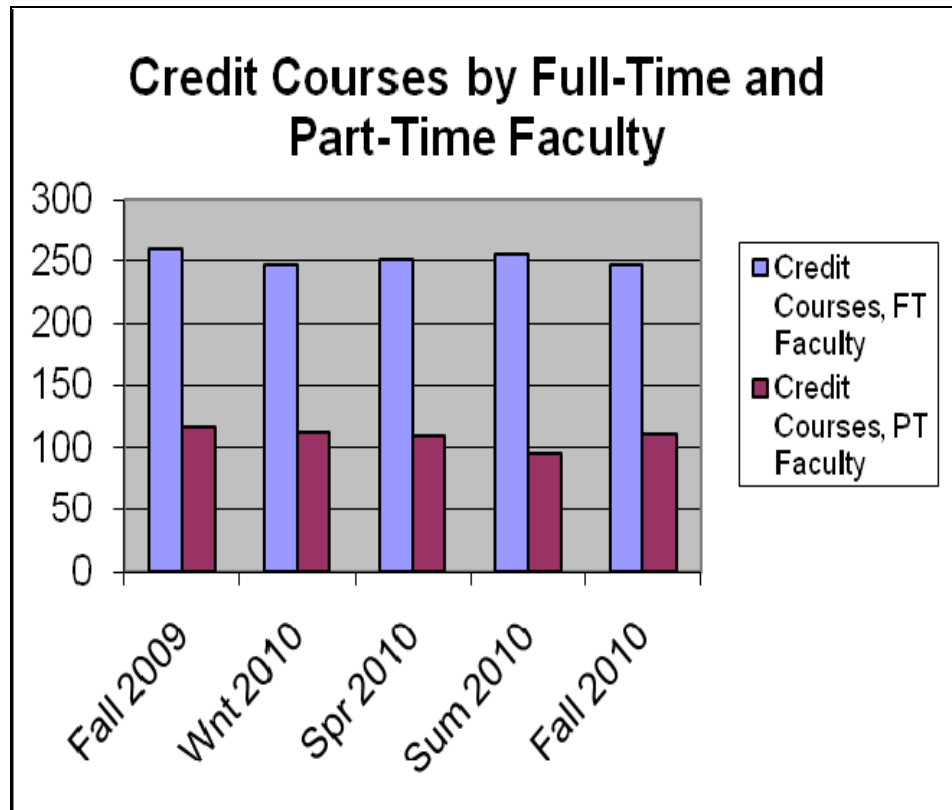
SECTION VII: FACULTY AND STAFF

Credit Courses Taught by Full-Time and Part-Time Faculty

	Fall 2009	Wnt 2010	Spr 2010	Sum 2010	Fall 2010
# of Full-Time Faculty	60	62	60	62	61
# of Part-Time Faculty	55	54	55	50	52
	Fall 2009	Wnt 2010	Spr 2010	Sum 2010	Fall 2010
Credit Courses, FT Faculty	260	247	251	255	247
Credit Courses, PT Faculty	116	112	110	96	111
Total # of Credit Courses	376	359	361	351	358
% Taught by FT Faculty	69%	69%	70%	73%	69%
% Taught by PT Faculty	31%	31%	30%	27%	31%

Source: SQL Rpt FacultyInfoForFactBook2.brw and ScheduleByInstructor





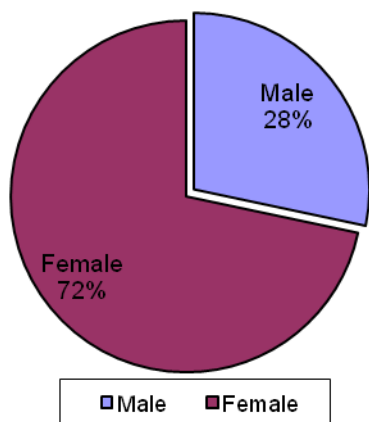
SECTION VII: FACULTY AND STAFF

Faculty Demographics Fall 2010

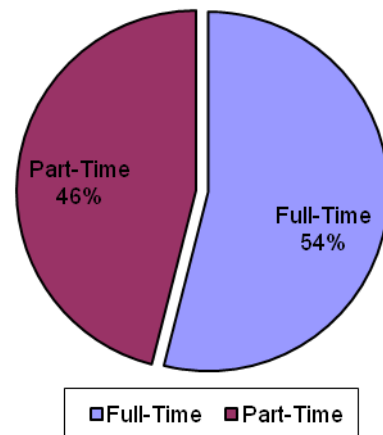
		Full-Time	Part-Time	Total
Gender	Male	19	13	32
	Female	42	39	81
Ethnicity	Black	2	4	6
	White	59	48	107
Highest Earned Degree	Doctorate	1	2	3
	Specialist	0	3	3
	Masters	35	15	50
	Baccalaureate	8	14	22
	Associate	9	5	14
	Diploma	4	8	12
	Technical Certificate	2	2	4
	Work Experience	2	3	5
Age	20-29	2	6	8
	30-39	15	15	30
	40-49	29	17	46
	50-59	12	6	18
	60+	3	8	11

Source: SQL Rpt FacultyInfoForFactBook2.brw

Fall 2010 - Male/Female

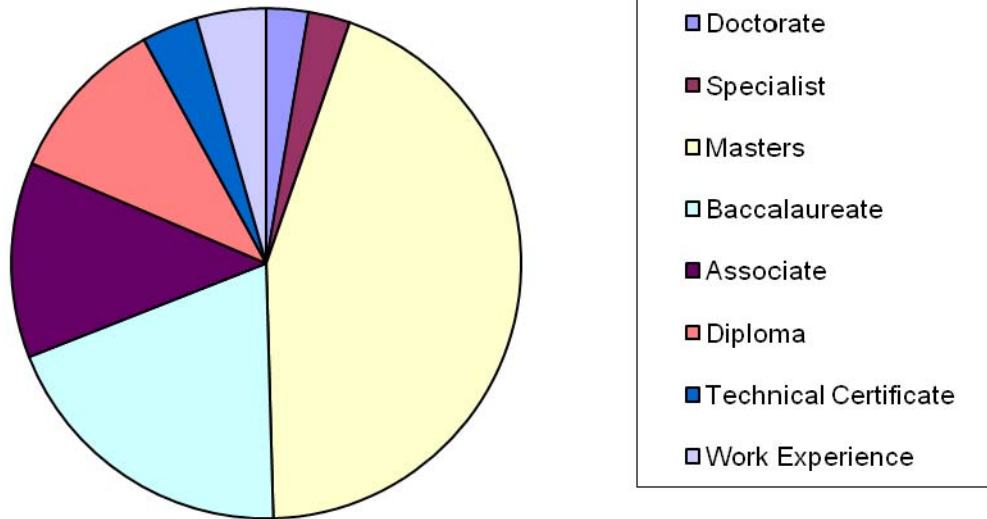


Fall 2010 - FT/PT

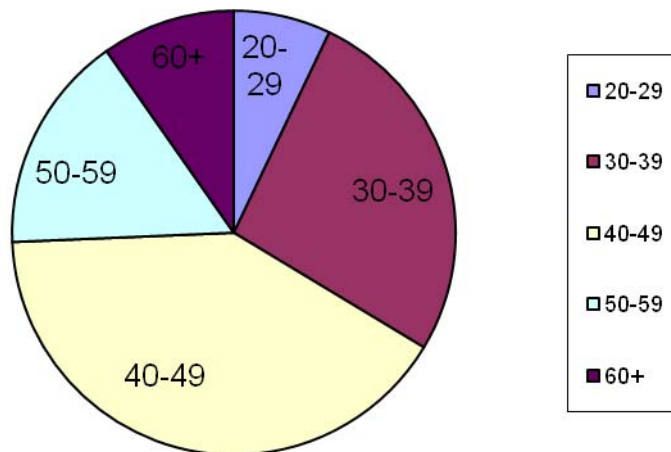


SECTION VII: FACULTY AND STAFF

Fall 2010 - Faculty Highest Earned Degree



Fall 2010 - Faculty Age



SECTION VIII

LIBRARY RESOURCES

SECTION VIII: LIBRARY RESOURCES

Services

Reference questions

Ask A Librarian Form Usage	
	FY 2010
General Question	8
GALILEO	8
ILL	0
NetLibrary	6
Total	22

Interlibrary Loans

ILL	
	FY 2010
Borrowing	70
Lending	141
Total	211

Bibliographic Instruction Summary, FY10

Quarter	# of Sessions	Attendees
Summer	16	223
Fall	38	721
Winter	37	652
Spring	19	381
Total	110	1977

SECTION VIII: LIBRARY RESOURCES

Resources

Circulation

	7/1/2009	Activity by Location and Collection through	6/30/2010
Check Outs	Location/Collection code		
GGEN	General Stacks		11
GREF	Reference		2
SAV	Audio Visual		49
SGEN	General Stacks		1,538
SPROF	Professional		1
SREF	Reference		5
VAV	Audio Visual		24
VECE	Early Childhood Educ		191
VEQP	Equipment		35
VGEN	General Stacks		431
VPROF	Professional		27
VREF	Reference		4
Total			2,318

GALILEO

Usage, with comparison to four other TCSG colleges FY10

Enrollment	College	GALILEO Sessions, FY10
2419	Ogeechee	4,736
2407	Moultrie	1,309
1975	Southeastern	5,517
1815	Heart of Georgia	3,561
1734	Okefenokee	5,265

Databases made available through GALILEO, paid for locally.

- Encyclopedia Britannica
- Gale Encyclopedia of Alternative Medicine, 2nd ed.
- Gale Encyclopedia of Espionage, Intelligence and Security
- Gale Encyclopedia of Surgery, a Guide for Caregivers and Patients
- Literature Resource Center (Gale)
- Magill's Medical Guide
- NetLibrary

SECTION VIII: LIBRARY RESOURCES

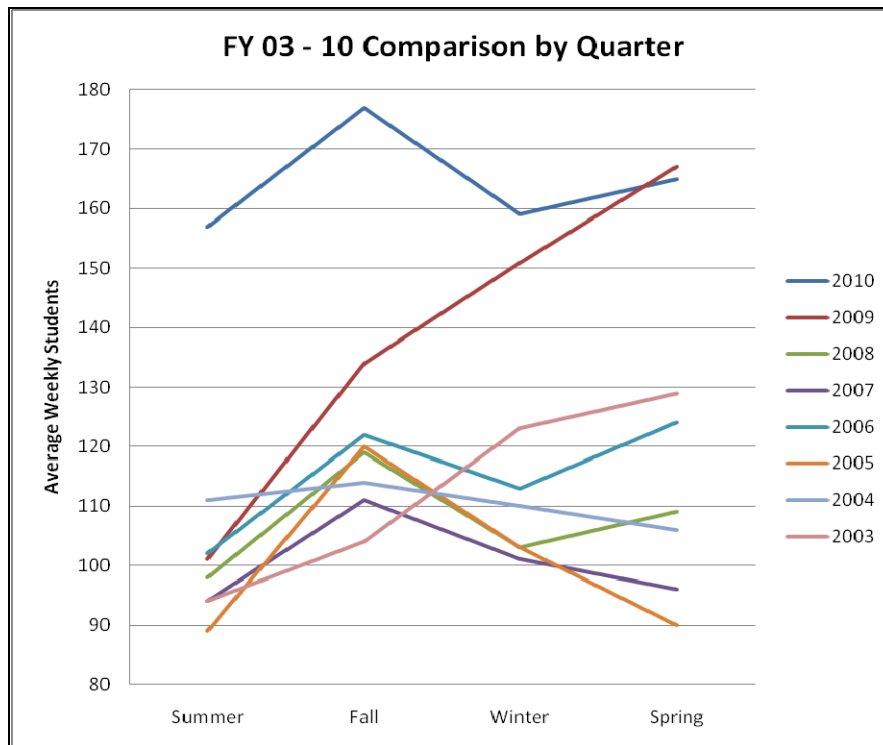
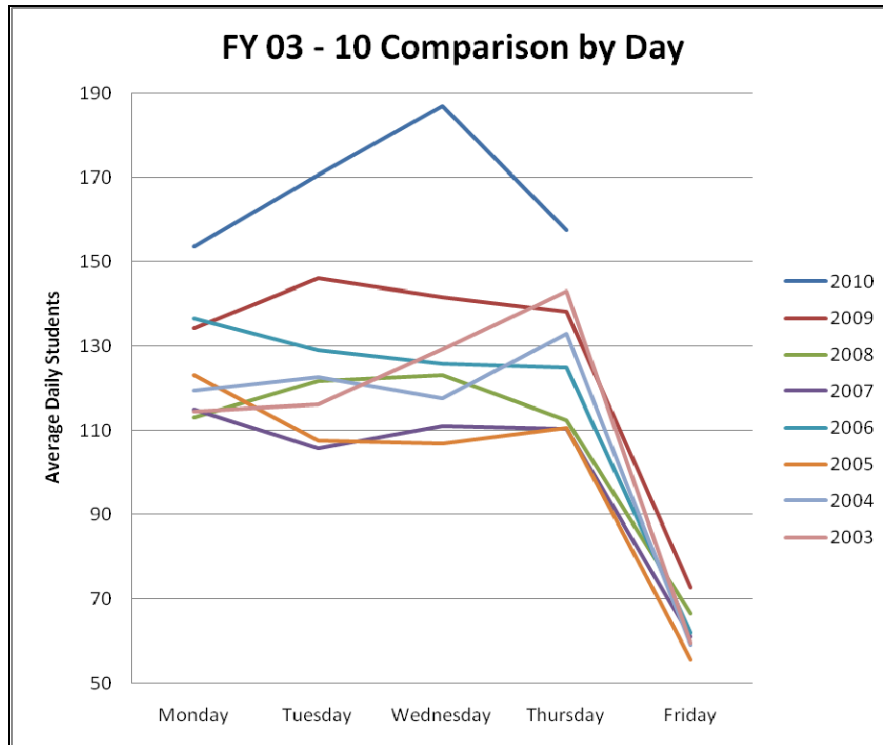
NetLibrary Usage FY10

Subject	Accesses
Agriculture	7
Arts	19
Biology and Life Sciences	7
Business, Economics and Management	162
Chemistry	2
Computer Science	50
Earth Sciences	1
Education	98
General Works and Reference	6
History: United States	18
History: World and General	10
Home Economics	74
Language and Linguistics	1
Law	45
Library Science and Publishing	14
Literature	65
Mathematics and Statistics	149
Medicine	618
Networking and Telecommunications	10
Other	3
Philosophy	28
Physics	6
Political Science	3
Psychology	13
Religion	12
Science : General	10
Social Sciences : General	177
Sociology and Anthropology	1
Sports and Recreation	2
Technology, Engineering and Manufacturing	94
Travel and Geography	1
Total	1,706

SECTION VIII: LIBRARY RESOURCES

Access

7 Year Comparison, Library Attendance, Vidalia



SECTION IX

**CONTINUING EDUCATION
and
ECONOMIC DEVELOPMENT**

SECTION IX: CONTINUING EDUCATION and ECONOMIC DEVELOPMENT

Adult Education

	FY 2010
Students Served	1,914
Contact Hours	132,669
Level Completions	653
GEDs Awarded	519

Adult Education Enrollment by County

County	FY 2010
Candler	155
Emanuel	554
Jenkins	137
Johnson	104
Montgomery	71
Tattnall	228
Toombs	438
Treutlen	227
Total	1,914

ESL Enrollment by County

County	FY 2010
Candler	8
Emanuel	0
Jenkins	0
Johnson	0
Montgomery	0
Tattnall	28
Toombs	19
Treutlen	0
Total	55

ESL Contact Hours by County

County	FY 2010
Candler	189
Emanuel	0
Jenkins	0
Johnson	0
Montgomery	0
Tattnall	1,057
Toombs	597
Treutlen	0
Total	1,843

Source: Ex. Dir. of Adult Education

Economic Development Services Data

Enrollment (People Served)

Department	FY 2010
Continuing Ed	756
Conferencing	4,944
Community Med/Emergency Training	9,506
Contract Training	1,854
Total	17,060

Revenue (\$)

Department	FY 2010
Continuing Ed	26,333
Conferencing	41,794
Community Med/Emergency Training	94,832
Contract Training	106,944
Total	269,903

Source: VPEDP

SECTION IX: CONTINUING EDUCATION and ECONOMIC DEVELOPMENT

Quick Start Companies Served FY 10

Chicken of the Sea	LIT Industries
Range Fuels	US Energy
Vista Windows	

Contract Training Companies Served FY 10

Appling EMS	ASTA
Bethany Assisted Living	Cowart Steel
Crider Poultry	DFACS
DOT Foods	Flower Basket
Georgia Correctional Industries	Gillis Ag and Timber
Gingerbread House	Harveys
Kiddie Castle	LIT Industries
McDonalds	Meadows Regional Hospital
Montgomery Prison	Mosley Maxofacial
Northland Cable	Plant Hatch
RR Donnelly	Satilla Regional
Savannah Luggage	Smith State Prison
Summer's Landing	Swainsboro Nursing Home
Tattnall County	Telamon
Trane	Twin View Nursing Home
Vidalia Ink	Vidalia Valley
VNS	

Small Business Assistance Services

Service	FY 2010
Business Startup Kits Distributed	54
Small Business Contacts	85
Business Starts	16

Source: VPEDP