

2015 Fact Book



SWAINSBORO CAMPUS
346 Kite Road
Swainsboro, GA 30401
(478) 289-2200

VIDALIA CAMPUS
3001 E. First Street
Vidalia, GA 30474
(912) 538-3100

Southeastern
TECHNICAL COLLEGE

A Unit of the Technical College System of Georgia

www.southeasterntech.edu

Southeastern Technical College is an Equal Opportunity Institution

Table of Contents

SECTION I GENERAL INFORMATION	1
SECTION II ENROLLMENT	16
SECTION III PROGRAM ENROLLMENT	26
SECTION IV PROGRAM LICENSURE	30
SECTION V GRADUATES.....	32
SECTION VI FINANCIAL AID	41
SECTION VII FACULTY AND STAFF.....	43
SECTION VIII LIBRARY RESOURCES	48
SECTION IX CONTINUING EDUCATION and ECONOMIC DEVELOPMENT	52
SECTION X COLLEGE SCORECARD	56

SECTION I

GENERAL INFORMATION

SECTION I: GENERAL INFORMATION

Introduction

The Institutional Effectiveness Division is pleased to present the **2015 Southeastern Technical College (STC) *Fact Book***.

This book is intended as a single, readily accessible, consistent source of information about Southeastern Technical College. It is a summary of institutional data compiled to capture the 2015 fiscal/academic year. The Fact Book provides pertinent facts and figures valuable to administrators, faculty, students, and the public.

An aspiration of this process is to make available increasingly more useful information on an annual basis. To help in accomplishing this, we welcome your comments and suggestions for the Fact Book.

Janene Betts
Continuing Education Specialist and IE Data Analyst
jbetts@southeasterntech.edu

Gail Ware
Vice President for Institutional Effectiveness
gware@southeasterntech.edu

SECTION I: GENERAL INFORMATION

Mission Statement

Southeastern Technical College, a unit of the Technical College System of Georgia, provides an innovative, educational environment for student learning through traditional and distance education delivery methods focused on building a well-educated, globally competitive workforce for Southeastern Georgia.

The College fulfills its mission through:

- associate degree, diploma, and technical certificate of credit programs;
- adult education;
- continuing education; and
- customized training and services.

Vision

Southeastern Technical College will be recognized as an educational leader in Southeastern Georgia. The College will deliver quality, student-centered, and accessible postsecondary education and training. The College will empower students for success, cultivating innovative and economically thriving communities and enterprises.

Southeastern Technical College Values:

- Integrity, honesty, openness, mutual respect, and personal excellence.
- Continuous improvement.
- Making a difference in teaching and learning.
- A strong, visionary Administration.
- A qualified and committed Faculty and Staff.
- Community Partnerships and citizenship.
- Safe, secure, and attractive campuses and facilities.
- Time together for planning.
- Positive attitudes and teamwork.
- Accessible and affordable, quality programs and services.
- Professional Development.
- Communication.
- Fairness, equality, and diversity.
- Workforce development.
- Marketing our uniqueness for a competitive advantage.
- Technological advancement.

SECTION I: GENERAL INFORMATION

Service Delivery Area and Campus Locations



SECTION I: GENERAL INFORMATION

Southeastern Technical College serves the geographic area of Candler, Emanuel, Jenkins, Johnson, Montgomery, Tattnall, Toombs, and Treutlen counties, which are located in southeast Georgia. The college currently offers programs at the following twelve locations:

Southeastern Technical College (Main-Vidalia Campus) is located at 3001 East First Street in Vidalia, Georgia. This location is along U.S. Highway 280 and is approximately 2.5 miles from U.S. Highway 1.

- Building 1: Administration Building (1990) 84,256 sq. ft.
Houses offices of administrative and support staff, Industrial programs, General Education classes, COS, Bookstore, and Library
- Building 2: Gillis Building (2003) 45,075 sq. ft.
Houses Allied Health programs and Business programs
- Building 3: Health Sciences Annex (2007) 10,000 sq. ft.
Houses Dental Hygiene program and biology lab.
- Building 4: Automotive Technology Training Center and Southeastern Early College and Career Academy (2011) 35,262 sq. ft.
Houses Automotive Technology and Career Academy.

Southeastern Technical College: Swainsboro Campus is located at 346 Kite Road in Swainsboro, Georgia. This location is along GA Highway 57 and is approximately 2 miles from U.S. Highway 1 and 35 miles from the Vidalia Campus.

- Building 1: (1996) 20,000 sq. ft.
Houses Administrative offices, Student Affairs, Allied Health classrooms/labs (PN, MA & PHL)
- Building 2: (1963-1979) 39,611 Sq. ft.
Houses Academic Affairs offices, Business classrooms/labs (ACC BAT, CIS, General Education & CJ), Library Resource Center, Career Center, technical classrooms/labs & ECM)
- Building 3: (1979) 10,290 Sq. ft.
Houses COS, Student Center, Bookstore, Facilities, Security & Polycom
- Building 4: (1989) 5,499 Sq. ft.
Houses Child Care Center
- Building 5: (1955) 1,200 Sq. ft.
Houses Information Services/Technical Support
- Building 6: (2003) 24,000 Sq. ft.
Houses Technology Center, Economic Development offices, General Education classrooms, Technical Division classrooms/labs (Flex Lab, ELTR, FWMT, FOR, & WLD)

SECTION I: GENERAL INFORMATION

Building 7: (1995) 2,700 Sq. ft.
Houses Maintenance/Storage

Building 8: Old building had been removed and new building is under construction

Building 10: (1950) 6,899 Sq. ft.
Houses maintenance and is a warehouse storage building

Southeastern Technical College shuttered its Glennville Campus located at 211 S. Tillman Street in Glennville, Georgia at the end of AY 12. The shuttered campus is located approximately one block from U.S. Highway 301. The distance to the Glennville Campus from the Vidalia Campus is 43.4 miles.

Building 1: Tattnall Institute Building (1916 – major renovations completed in 2004) 13,544 Sq. ft.
Building is leased out to the City of Glennville and the Glennville-Tattnall Museum

Building 2: Allied Health Building (major renovations completed in 2004) 5,209 Sq. Ft.
Building is leased out to the City of Glennville

Building 3: Tattnall Technology Center (2004) 7,995 Sq. ft.
Houses Adult Education and Continuing Education classes

Building 4: Cosmetology Building (2011) 5,600 Sq. ft.
Houses classrooms and offices

The Economic Development Center & Health Sciences Annex West is located at 100-A Brinson Road in Vidalia. It houses continuing education, business and industry training, adult education programs, and the Registered Nursing Program. (2002) with 26,855 Sq. ft. The Economic Development Center is located approximately one block off of U.S. Highway 280, and is 3.7 miles from Southeastern Tech's Vidalia Campus.

The Johnson County Extension Center is located at 21 Cedar Creek Drive in Wrightsville, Georgia. This location is approximately 1 mile southeast of downtown Wrightsville off of GA Highway 57 and is 25 miles from the Swainsboro Campus. (2007) 4,179 Sq. ft. It serves as an extension location for selected credit courses. Extension Campus Houses Credit Classrooms/labs, offices, and Continuing Education classes

The Candler County Center is located at 25 West Daniel Street in Metter, Georgia 25 miles from the Swainsboro Campus. (2001) with 6,100 Sq. ft. This center provides adult education classes and services to residents of Candler County. It also serves as an extension location for selected credit courses.

The Jenkins County Center is located at 210 Hendrix Street in Millen, Georgia 35 miles from the Swainsboro Campus. (1995) with 3,500 Sq. ft. This center provides adult education classes and services to residents of Jenkins County. It also serves as an extension location for selected credit courses.

SECTION I: GENERAL INFORMATION

The Johnson County Center is located at 37 Georgia Avenue in Wrightsville, Georgia, 30 miles from the Swainsboro Campus (1999) with 2,400 Sq. ft. This center provides adult education classes and services to residents of Johnson County.

The Tattnall-Reidsville Adult Learning Center is located at 123 Tattnall Street in Reidsville, just off of U.S. Highway 280 (2001) with 4,591 Sq. ft. This center provides adult literacy classes and services to residents of northern Tattnall County. The building is owned and maintained by Tattnall County for Southeastern Tech's use. The center is located approximately 17 miles from the college's Vidalia Campus.

The Montgomery County Adult Literacy Center is located at 251 S. Fulton Street in Mt. Vernon. This center provides adult literacy services to residents of Montgomery County. This facility is owned and maintained by Montgomery County for Southeastern Tech's use in 2002 with 4,176 Sq. ft. The center is conveniently located just off of U.S. Highway 280 and is approximately 14.5 miles from the college's Vidalia Campus.

The Commercial Truck Driving Facility is located at 1400 Harris Industrial Boulevard in Vidalia in the Toombs Industrial Park. 2003 with 2,688 Sq. ft. The property is located a short 1.6 miles from Southeastern Technical College's Vidalia Campus. It houses the Commercial Truck Driving program.

SECTION I: GENERAL INFORMATION

Institutional Goals

The goals that will help us realize our vision and mission are to:

Guarantee student access and the opportunity for success at all levels.

Objectives:

1. Assure the quality of instruction and support services to enhance student learning.
2. Expand adult education opportunities to improve educational advancement.
3. Expand dual enrollment opportunities and other partnerships with local secondary school systems.
4. Expand options and collaborations with business and industry, other post-secondary institutions, and other state agencies.

Build the local workforce for economic vitality.

Objectives:

1. Provide excellence in economic development and community services to support attracting business /industry and creating/ expanding/ retaining jobs.
2. Support certified Work Ready and Entrepreneur Friendly programs.
3. Expand credit program offerings to match workforce needs/strategic industries.

Improve the visibility, recognized value, and support of Technical Education, Adult Education, and Workforce Training.

Objectives:

1. Maintain comprehensive marketing plan.
2. Maintain SACS/COC and appropriate program accreditations.
3. Build private financial support and increase alternative funding sources.

Enhance the College's organizational development in terms of educational delivery, facilities and equipment, and internal workforce.

Objectives:

1. Maximize efficiency and effectiveness in the delivery of quality programs and services.
2. Implement a comprehensive facilities and capital outlay plan.
3. Develop and implement plans to assure College safety, security, and business continuity.
4. Maintain innovative, cutting-edge technology and equipment to improve College operations and student learning.
5. Expand staff development and leadership training for personnel.
6. Improve faculty and staff recruitment and retention and increase the full-time faculty percentage.

SECTION I: GENERAL INFORMATION

History

During the 1987 session, the Georgia Legislature appropriated \$45,000 for the preliminary plans for a technical institute to be located in Southeast Georgia. During the 1988 session, an additional appropriation of \$5,410,000 was approved for the construction of the new institute. Other state funds totaling \$445,000 were added to the project. Additionally, the citizens of Toombs County, through a local option sales tax, contributed \$1,689,000 to the project for the construction of a 776-seat auditorium. The total funds invested in the project amounted to \$7,553,000.

Construction of Southeastern Technical Institute began in 1988. A local Board of Directors was sworn into office in July 1989. By November 1989, the Southeastern Technical Institute Foundation was incorporated. Although the facilities were still under construction, the first diploma program, Practical Nursing began in January 1990. Upon completion of construction in 1990, a dedication ceremony was held. Governor Joe Frank Harris delivered the dedicatory address.

October 1, 1990, marked the official opening of the new facility. Forty-six students enrolled in four diploma programs: Practical Nursing, Information and Office Technology, Accounting, and Cosmetology. An additional 32 students enrolled in Developmental Studies. In March 1991, nine Practical Nursing students graduated in Southeastern Tech's first commencement exercise. The institute remained constant in adding more programs to respond to the needs of the community.

In 1992, Southeastern Tech established a campus in Glennville. After having leased facilities in Glennville for a number of years, on June 14, 1994 the City of Glennville gave Southeastern Tech three buildings and the land the campus buildings are situated. Also of significance to the Glennville Campus was the award of a Community Block Development Grant to Tattnall County for the construction of a Technology Center. This facility is located on property adjacent to the Glennville campus and is utilized by Southeastern Technical College for adult literacy training, continuing education, and business and industry training.

On February 5, 1998, the State Board of the Technical College System of Georgia authorized the purchase of a building located in Vidalia to be used as the College's Economic Development Center. The building had been leased by Southeastern Technical College since 1994. Renovation of this facility was completed in October 2002. The facility also houses regional operations for the Technical College System of Georgia's Quick Start program, an organization which serves the training needs of new and expanding industries.

In 2000, the school had a 43% increase in enrollment over 1999 and a 257% increase in the continuing education department in two years. Beyond growth was the tremendous positive effect the institution has experienced through the development of a more technically skilled workforce.

On December 7, 2000, Southeastern Technical Institute officially changed its name to Southeastern Technical College. The name change was a facet of Governor Roy Barnes' Education Reform Bill. This also allowed STC to offer associate degrees and receive formula-funding based on enrollment from the State of Georgia.

SECTION I: GENERAL INFORMATION

Southeastern Technical College celebrated ten years of service to Toombs, Tattnall, and Montgomery counties while promoting the theme, "A Decade of Difference." Southeastern Technical College continued to increase enrollment and add new programs.

In 2001, the Toombs County Development Authority conveyed 15.92 acres of land in the Toombs County Industrial Park to Southeastern Technical College for the purpose of establishing a Commercial Truck Driving facility. The Commercial Truck Driving Facility was completed in June 2003.

A landmark occasion for adult literacy efforts occurred in September 2001 with the opening of the Reidsville-Tattnall County Adult Literacy Center. The facility, funded by a Community Development Block Grant (CDBG), provided a permanent home for adult literacy programs and services in Reidsville.

Construction began in November 2001 on the Medical Technology Building on the main campus. Due to unprecedented enrollment growth, funds were appropriated to construct an addition to this project.

In FY 2001, Southeastern Technical College served over 1900 students in credit programs alone. The College grew to more than 50 programs in business, health, technical and industrial fields. Online classes became available at Southeastern Technical College through the Georgia Virtual Technical Connection. Barriers of time and distance diminished as obstacles that could hinder students from receiving the education they desire and deserve.

Following the success in establishing a permanent home for adult literacy programs and services in Reidsville was the establishment of the Montgomery County Adult Literacy Center in Mt. Vernon. The construction of this facility was also established through a CDGB to Montgomery County. The Center opened in June 2002.

During FY 2002, the College had a major impact on the community as literacy classes were now able to be offered at four different sites. As previously stated, construction began on the regional medical technology building; construction started on the Glennville Campus renovations; STC added additional parking on the Vidalia campus, as well as completed the final phases for the new Economic Development Center in Vidalia.

Southeastern Technical College has experienced phenomenal growth during its relatively brief existence. Space constraints on the Vidalia campus were alleviated in January 2004 with the official opening of the Medical Technology Building.

The hallmark of the success of Southeastern Technical College is the strong local support from its service area. This modern facility stands as a finely sculptured monument to the economic growth and development of the entire region. Adult students, regardless of sex, race, age, color, religion, national origin, marital status, academic or economic disadvantage or disability may capitalize on the enhanced opportunities offered by technical education. Technical education has clearly become a desirable, attractive alternative for education for the citizens of Georgia.

In January 2008, Commissioner Ron Jackson of the Technical College System of Georgia charged a taskforce to measure the feasibility of merging two technical colleges as the first of

SECTION I: GENERAL INFORMATION

several mergers across the state. In August 2008, a plan to merge the first two colleges was approved. At its September 2008 meeting, the State Board of Technical and Adult Education determined that merger strategies were necessary throughout the state and gave approval to proceed with the mergers proposed by the Technical College System of Georgia.

Commissioner Jackson met with the Local Boards of Southeastern Technical College and Swainsboro Technical College to discuss their role during the merger process. Dr. Ray Perren, Assistant Commissioner of the TCSG, met with the college presidents to prioritize and outline the tasks before them. Southeastern and Swainsboro formed a combined Steering Committee of senior staff from both colleges to lead and manage the merger process.

Southeastern Technical College and Swainsboro Technical College had a close working relationship since the opening of Southeastern Tech in 1990. In fact, Southeastern Tech was formed from Swainsboro Tech's service delivery area. The colleges were located only 32 miles apart; therefore, they often had transient students from one another and shared many of the same community supporters, business partnerships and resources. They provided more than 15 similar programs, with many of the programs using the same books and instructional materials. The merger benefits the communities served by creating a strong, single presence with increased visibility, and a unified mission. The merged college better utilizes limited resources to be more responsive to the needs of business and industry. More efficient resource utilization allows current programs to be expanded and frees up resources to add new programs as needed in our continually changing economy. As one educational entity in the communities, the merged college better serves the communities with stronger partnerships, decreased competition for resources and fundraising, elimination of duplication, and more visibility as a stronger institution. A merged institution further enhances the programs and services provided to all communities served and broadens the opportunities in many areas.

On July 1, 2009, Swainsboro Technical College and Southeastern Technical College officially merged to form the new Southeastern Technical College, which serves Candler, Emanuel, Jenkins, Johnson, Montgomery, Tattnall, Toombs, and Treutlen counties. The Board of Trustees of the Commission on Colleges continued accreditation following review of the consolidation/merger. Southeastern Technical College was initially accredited by the Southern Association of Colleges and Schools Commission on Colleges (SACSCOC) in 2009. Prior to this date, both former colleges were accredited by SACSCOC from 2008 to 2009.

In FY/AY 2012, Southeastern Technical College, a unit of the Technical College System of Georgia, successfully converted from the Quarter System to the Semester System.

In June 2013, Southeastern Technical College's accreditation was reaffirmed by the Southern Association of Colleges and Schools Commission on Colleges (SACSCOC) with the next reaffirmation of accreditation review scheduled for 2023.

AY 2014 presented Southeastern Technical College with its tightest budget in its history. The STC Foundation developed and implemented the first R.I.D.E. Campaign. STC became an Achieving the Dream College. STC Swainsboro Campus celebrated its 50th Anniversary. The Health Sciences Building construction began on the Swainsboro Campus. The Vidalia Campus Economic Development Center was revamped to include the Health Science West Annex. STC accepted its first class for the Associate of Science in Nursing. The class is slated to graduate December 2015.

SECTION I: GENERAL INFORMATION

In AY 2015, the Southern Association of Colleges and Schools Commission on Colleges Board of Trustees continued accreditation following review of a program expansion to include the Associate of Science in Nursing program.

Accreditation/Certification/Licensure/Approval

Southeastern Technical College is a unit of the Technical College System of Georgia.
<http://www.tcsge.edu/>

- Southeastern Technical College is accredited by the Commission on Colleges of the Southern Association of Colleges and Schools to award Associate Degrees. Contact the Commission on Colleges at 1866 Southern Lane, Decatur, GA 30033-4097 or call (404) 679-4500 for questions about the accreditation of Southeastern Technical College.
www.sacscoc.org. *Inquiries such as admission requirements, financial aid, educational programs, etc., should be addressed directly to Southeastern Technical College and not to the Commission's office. Please direct all questions to: Southeastern Technical College, 3001 E. First Street, Vidalia, GA 30474, 912.538.3100, Fax 912-538-3156.*
- The Practical Nursing program is approved by the Board of Examiners of Licensed Practical Nurses for the State of Georgia, 237 Coliseum Drive, Macon, GA 31217-3858, (478) 207-2440. <http://sos.georgia.gov/plb/lpn/>
- The Nurse Aide program is approved by the Georgia Medical Care Foundation, 1455 Lincoln Parkway East, Suite 750, Atlanta, Georgia 30346-2200. Phone number is 678-527-3010 or 800-414-4358.
- The Medical Assisting Diploma Program is accredited by the [Commission on Accreditation of Allied Health Education Programs \(www.caahep.org\)](http://www.caahep.org) upon the recommendation of the Medical Assisting Education Review Board (MAERB). Commission on Accreditation of Allied Health Education Programs, 1361 Park Street, Clearwater, FL 33756. 727/210-2350
- The Early Childhood Care and Education Paraprofessional Training program is approved by the Georgia Professional Standards Commission, Two Peachtree Street, Suite 6000, Atlanta, GA 30303, (800) 869-7775. <http://www.gapsc.com/>
- The Child Care Center on the Swainsboro campus is recognized as a Center of Distinction by the Georgia Department of Early Care and Learning.
<https://www.decal.ga.gov/>
- Southeastern Technical College is a Certified Cisco Network Academy.
<http://www.cisco.com/web/learning/netacad/index.html>
- Southeastern Technical College is a Microsoft IT Academy. The IT Academy provides tools to train students on Microsoft technologies, help them succeed in school, and prepare them for the global economy. The program includes access to a variety of curricula and certifications, software licenses, and a range of instruction from computer basics to high-level programming and architecture.
<http://www.microsoft.com/education/msitacademy/default.aspx>
- Emergency Medical Technician graduates are eligible to sit for the National Registry of EMTs, Emergency Medical Technician (EMT) Exam.
- Advanced Emergency Medical Technician (AEMT) graduates are eligible to sit for the National Registry of EMTs, Advanced Emergency Medical Technician (AEMT) Exam.
- EMS Professions graduates are eligible to sit for the National Registry of EMTs, Advanced Emergency Medical Technician (AEMT) Exam.
- Paramedicine program graduates are eligible to sit for the National Registry of EMTs, Paramedic Exam.
 - The Southeastern Technical College Paramedicine program is accredited by the Commission on Accreditation of Allied Health Education Programs (www.caahep.org) upon the recommendation of the Committee on Accreditation

SECTION I: GENERAL INFORMATION

of Educational Programs for the Emergency Medical Services Professions (CoAEMSP).

Commission on Accreditation of Allied Health Education Programs
1361 Park Street
Clearwater, FL 33756
727-210-2350
www.caahep.org

To contact CoAEMSP:
8301 Lakeview Parkway Suite 111-312
Rowlett, TX 75088
214-703-8445
FAX 214-703-8992
www.coaemsp.org

- The Technical College System of Georgia's Cosmetology curriculum is approved by the Georgia State Board of Cosmetology, <http://sos.georgia.gov/plb/cosmetology/>. Graduates are eligible to take the Master Cosmetologist Licensure Exam.
- The Surgical Technology program is accredited by the Commission on Accreditation of Allied Health Education Programs (CAAHEP) upon recommendation of the Accreditation Review Council on Education in Surgical Technology and Surgical Assisting (ARC/STSA) (www.arcst.org). Graduates are eligible to take the National Certification Exam from the National Board for Surgical Technologist and Surgical Assistants (NBSTSA)
CAAHEP, 1361 Park Street, Clearwater, FL 33756, (727) 210-1300. www.caahep.org
ARC-ST - www.arcst.org
- The Radiologic Technology program is accredited by the Joint Review Committee on Education in Radiologic Technology (JRCERT), 20 North Wacker Drive, Suite 2850, Chicago, IL 60606-3182, (312) 704-5300, www.jrcert.org. Graduates are eligible to take the National Registry Examination sponsored by the American Registry of Radiologic Technologists.
- The Clinical Laboratory Technology program is accredited by the National Accrediting Agency for Clinical Laboratory Sciences (NAACLS), 5600 N. River Road, Suite 720, Rosemont, Illinois 60018-5119, (773) 714-8880. <http://www.naacls.org>
- The Pharmacy Technology program is accredited by the American Society of Health-System Pharmacists, 7272 Wisconsin Avenue, Bethesda, MD 20814, (301) 657-3000, www.ashp.org. Graduates are eligible to take the National Pharmacy Technician Certification Exam.
- The Dental Hygiene program is accredited by the Commission on Dental Accreditation (CODA) - American Dental Association (ADA). The Commission is a specialized accrediting body recognized by the United States Department of Education. The Commission on Dental Accreditation can be contacted at (312) 440-4653 or at 211 East Chicago Avenue, Chicago, IL 60611.
<http://www.ada.org/prof/ed/accred/commission/index.asp>
Graduates are eligible to take the ADA National Board Dental Hygiene Examination and the CRDTS National Dental Hygiene Examination.
- In addition, Southeastern Technical College is a member of the following organizations:
 - The American Association of Collegiate Registrars and Admissions Officers

SECTION I: GENERAL INFORMATION

- The American Association of Community Colleges
- The National Association of College and University Business Officers
- The National Council on Student Development
- The Council for Higher Education Accreditation

SECTION II

ENROLLMENT

SECTION II: ENROLLMENT

Credit Enrollment (Unduplicated)

Headcount, Credit Hours and FTE (Full-Time Equivalency)

		2012-2013	2013-2014	2014-2015
		AY13	AY14	AY15
Headcount		2458	2207	2266
		AY13	AY14	AY15
Credit Hours		39,113	33,358	34,402
		AY13	AY14	AY15
FTE		1303	1111	1146

Source: TCSG Data Center EOY Total Rpt

Enrollment and Credit Hours by Campus

Campus	2012-2013		2013-2014		2014-2015	
	AY13		AY14		AY15	
	Enroll	Credit Hrs	Enroll	Credit Hrs	Enroll	Credit Hrs
Vidalia	1,748	27,834	1,581	23,900	1,693	25,501
Swainsboro	724	11,279	647	9,458	597	8,901
Glennville	0	0	0	0	0	0
(Unduplicated) TOTAL	** 2472	39,113	** 2228	33,358	** 2266	34,402

Source: TCSG Data Center DC#135

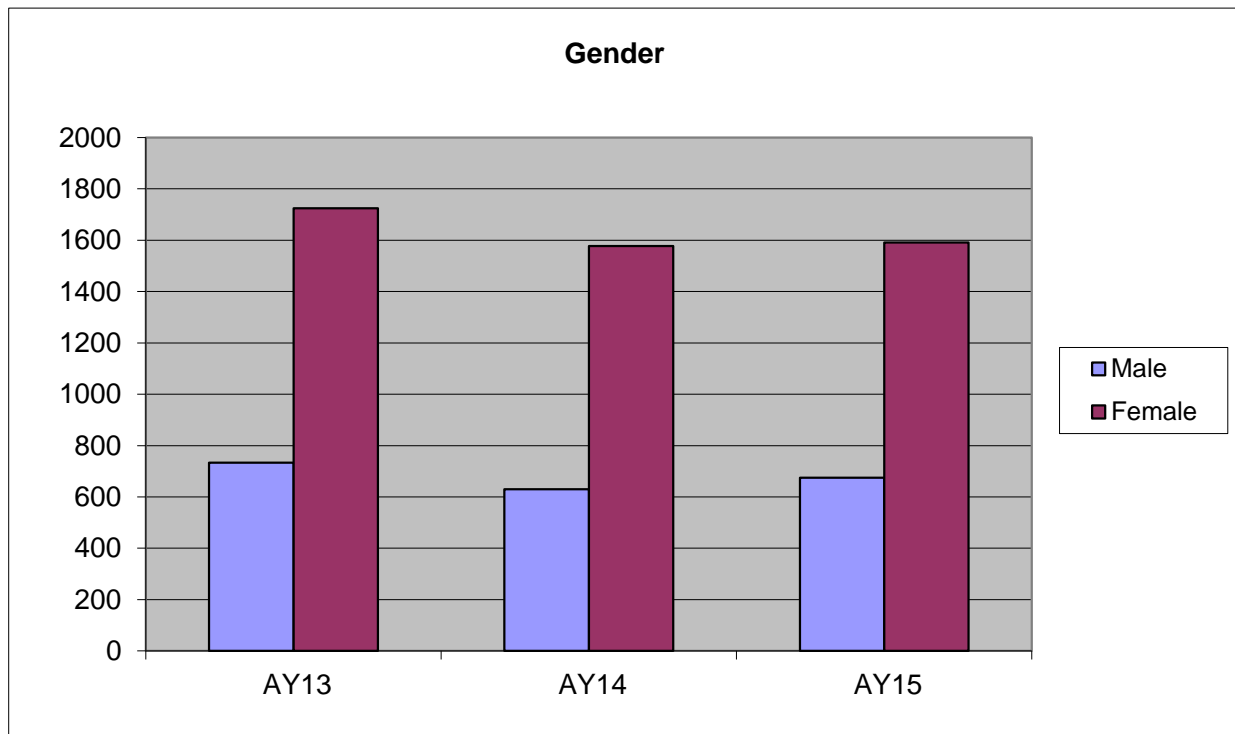
** Unduplicated numbers do not equal the sum. If a student was assigned more than one campus during the year, they will be reported for each campus.

SECTION II: ENROLLMENT

Gender

	2012-13	2013-14	2014-15
	AY13	AY14	AY15
Male	733	630	675
Female	1725	1,577	1,591
TOTAL	2458	2,207	2,266

Source: TCSG Data Center EOY Gender Rpt



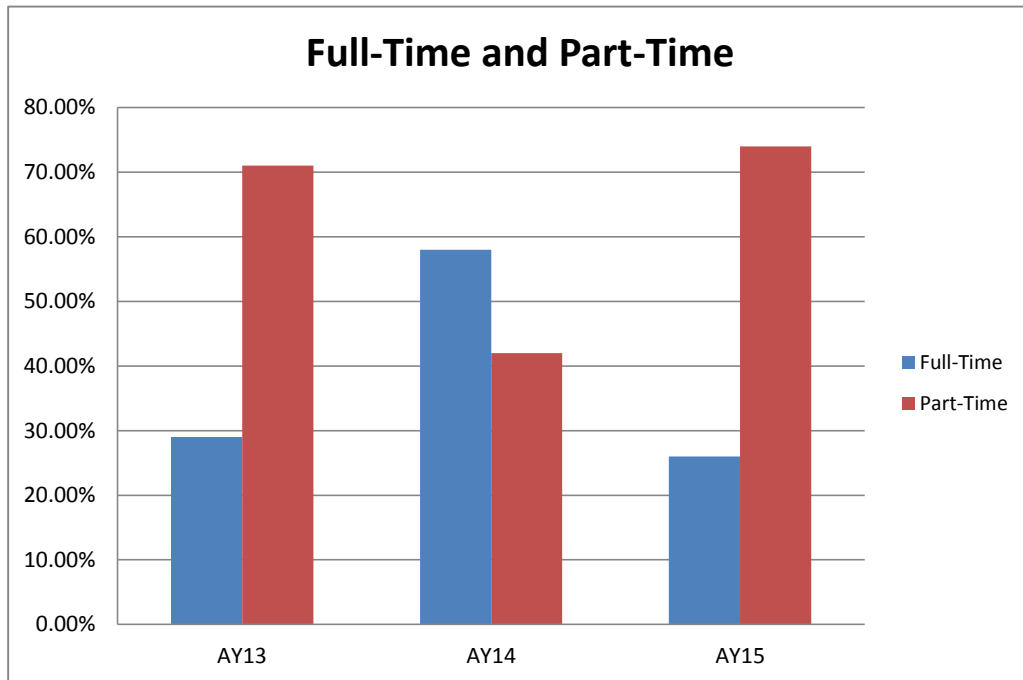
SECTION II: ENROLLMENT

Full-Time and Part-Time

(Based on Fall Quarter Enrollment)

	AY13	AY14	AY15
	Fall 2012	Fall 2013	Fall 2014
Full-Time	29.00%	58.00%	26.00%
Part-Time	71.00%	42.00%	74.00%
TOTAL	100.00%	100.00%	100.00%

Source: TCSG Data Center EOQ FTPT Rpt

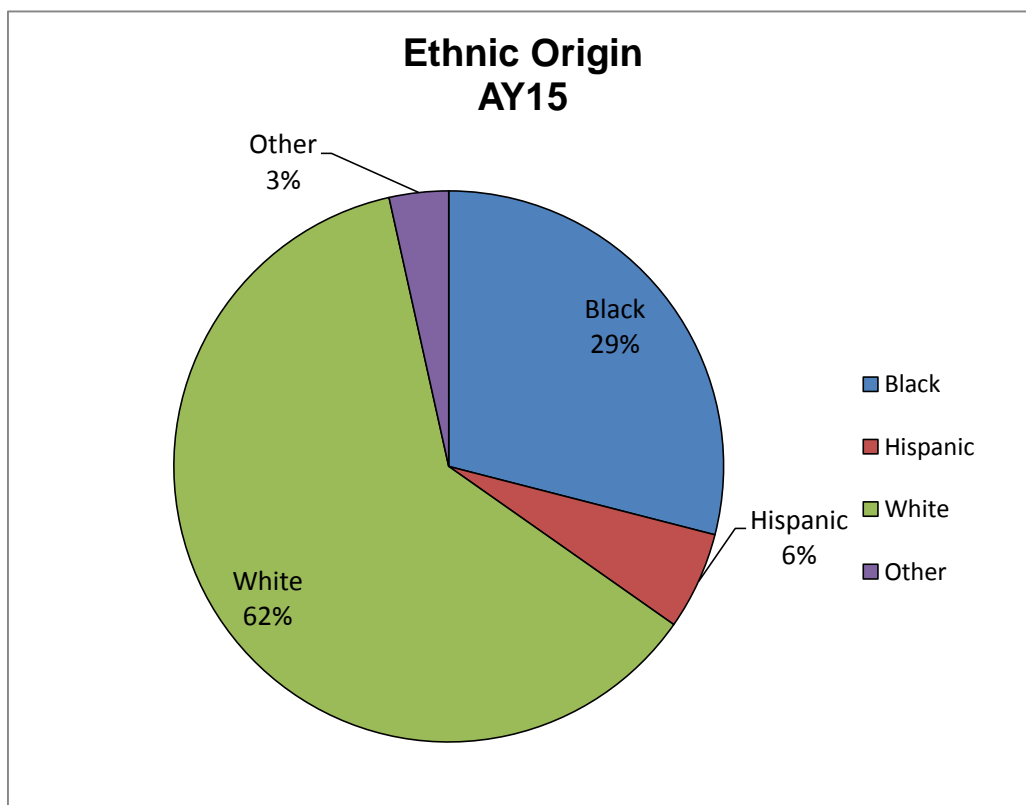


SECTION II: ENROLLMENT

Race/Ethnic Origin

	Total	American Indian		Asian		Black		Hispanic		Native Hawaiian		Two or More Races		White		Nonresident Alien		UnKnown	
		No.	%	No.	%	No.	%	No.	%	No.	%	No.	%	No.	%	No.	%	No.	%
AY13	2,458	4	0.2%	6	0.2%	812	33.0%	86	3.5%	1	0.0%	14	0.6%	1,532	62.3%	2	0.0%	2	0.1%
AY14	2,207	5	0.2%	10	0.5%	699	31.7%	86	3.9%	2	0.1%	10	0.5%	1,393	63.1%	0	0.0%	2	0.1%
AY15	2,266	3	0.1%	9	0.4%	657	29.0%	130	5.7%	3	0.1%	63	2.8%	1,100	61.8%	0	0.0%	1	0.0%

Source: TCSG Data Center EOY Race Rpt



SECTION II: ENROLLMENT

County of Residence

	AY 2012 2011-2012		AY 2013 2012-2013		AY 2015 2014-2015	
County	##	%	##	%	##	%
Appling	58	2.40%	61	2.80%	54	2.40%
Atkinson			1	0.00%	1	0.00%
Bacon	2	0.10%	0	0.00%	1	0.00%
Brantley	0	0.00%	1	0.00%	1	0.00%
Barrow			1	0.00%	1	0.00%
Bartow	1	0.00%	0	0.00%	0	0.00%
Bibb	1	0.00%	0	0.00%	0	0.00%
Bleckley	1	0.00%	0	0.00%	0	0.00%
Bryan	0	0.00%	4	0.20%	7	0.30%
Bulloch	17	0.70%	23	1.00%	42	1.90%
Burke	26	1.10%	28	1.30%	17	0.80%
Camden			1	0.00%	3	0.10%
* Candler	73	3.00%	75	3.40%	81	3.60%
Chatham	2	0.10%	1	0.00%	3	0.10%
Cherokee	2	0.10%	1	0.00%	0	0.00%
Clarke	1	0.00%	1	0.00%	0	0.00%
Clayton	0	0.00%	1	0.00%	0	0.00%
Coffee	3	0.10%	2	0.10%	2	0.10%
Columbia	1	0.00%	1	0.00%	0	0.00%
Coweta					1	0.00%
DeKalb	0	0.00%	0	0.00%	0	0.00%
Douglas					1	0.00%
Dodge	4	0.20%	3	0.10%	3	0.10%
Effingham	1	0.00%	0	0.00%	1	0.00%
* Emanuel	491	20.00%	461	20.90%	448	19.80%
Evans	28	1.10%	30	1.40%	31	1.40%
Fannin	1	0.00%	1	0.00%	1	0.00%
Floyd	1	0.00%	1	0.00%	1	0.00%
Fayette					1	0.00%
Fulton	0	0.00%	0	0.00%	0	0.00%
Glynn	2	0.10%	1	0.00%	1	0.00%
Grady					1	0.00%
Gwinnett	1	0.00%	1	0.00%	1	0.00%
Habersham			1	0.00%	1	0.00%
Hall					1	0.00%

SECTION II: ENROLLMENT

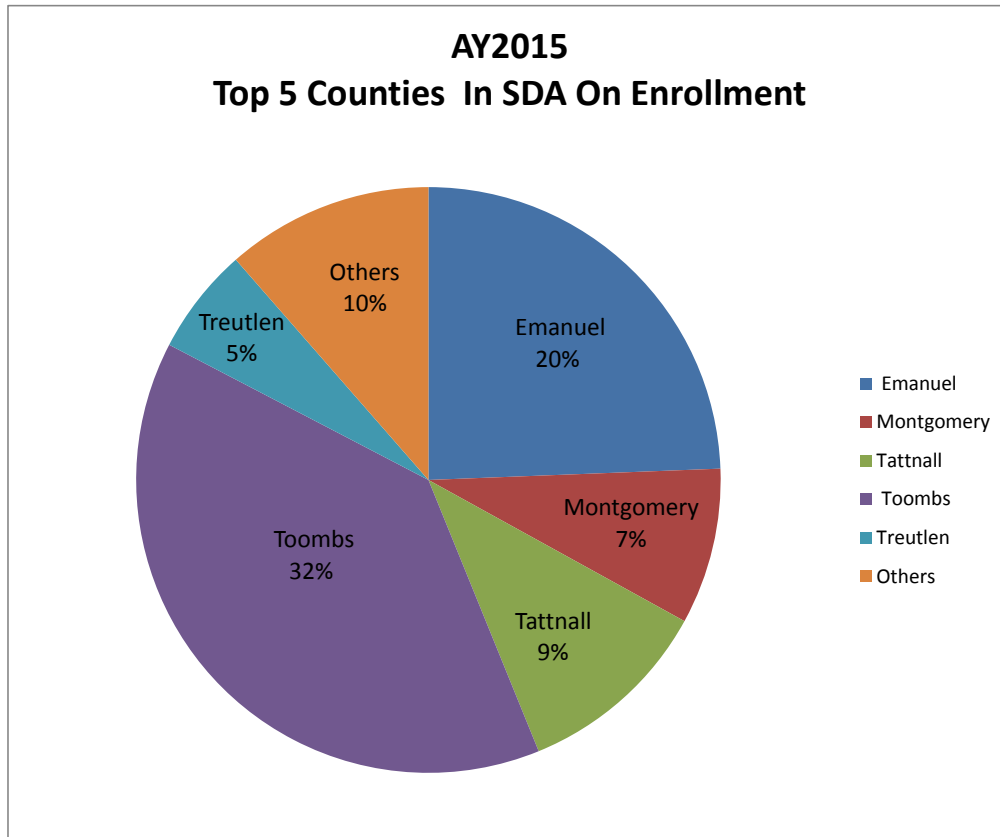
Harris	1	0.00%	1	0.00%	0	0.00%
Henry	0	0.00%	1	0.00%	1	0.00%
Jeff Davis	83	3.40%	72	3.30%	84	3.70%
Jefferson	49	2.00%	43	1.90%	31	1.40%
* Jenkins	64	2.60%	65	2.90%	63	2.80%
* Johnson	56	2.30%	71	3.20%	66	2.90%
Laurens	32	1.30%	29	1.30%	28	1.20%
Lee	1	0.00%	1	0.00%	0	0.00%
Liberty	2	0.10%	2	0.10%	3	0.10%
Long	5	0.20%	2	0.10%	7	0.30%
Lowndes	0	0.00%	0	0.00%	1	0.00%
Madison	0	0.00%	0	0.00%	1	0.00%
McIntosh					1	0.00%
* Montgomery	161	6.60%	151	6.80%	158	7.00%
Muscogee					0	0.00%
Newton	0	0.00%	0	0.00%	0	0.00%
Paulding	0	0.00%	1	0.00%	0	0.00%
Peach					1	0.00%
Pierce	2	0.10%	3	0.10%	1	0.00%
Richmond	5	0.20%	5	0.20%	1	0.00%
Screven	1	0.00%	0	0.00%	7	0.30%
Spalding	1	0.00%	0	0.00%	0	0.00%
Sumter	0	0.00%	0	0.00%	0	0.00%
* Tattnall	305	12.40%	220	10.00%	199	8.80%
Telfair	29	1.20%	31	1.40%	30	1.30%
Thomas			1	0.00%	0	0.00%
* Toombs	796	32.40%	670	30.40%	714	31.50%
* Treutlen	87	3.50%	83	3.80%	109	4.80%
Troup	0	0.00%	0	0.00%	1	0.00%
Ware	1	0.00%	1	0.00%	1	0.00%
Washington	0	0.00%	1	0.00%	5	0.20%
Wayne	1	0.00%	0	0.00%		
Wheeler	66	2.70%	71	3.20%	56	2.50%
Wilcox					1	0.00%
Unknown	0	0.00%	0	0.00%	0	0.00%
Out of State:	5	0.20%	7	0.30%	8	0.30%
**(Unduplicated) TOTAL	2458	100.00%	2207	100.00%	2266	100.00%

* County is in the College's Service Delivery Area (SDA)

Source: TCSG Data Center Rpt #DC 122

** Unduplicated numbers do not equal the sum.

SECTION II: ENROLLMENT

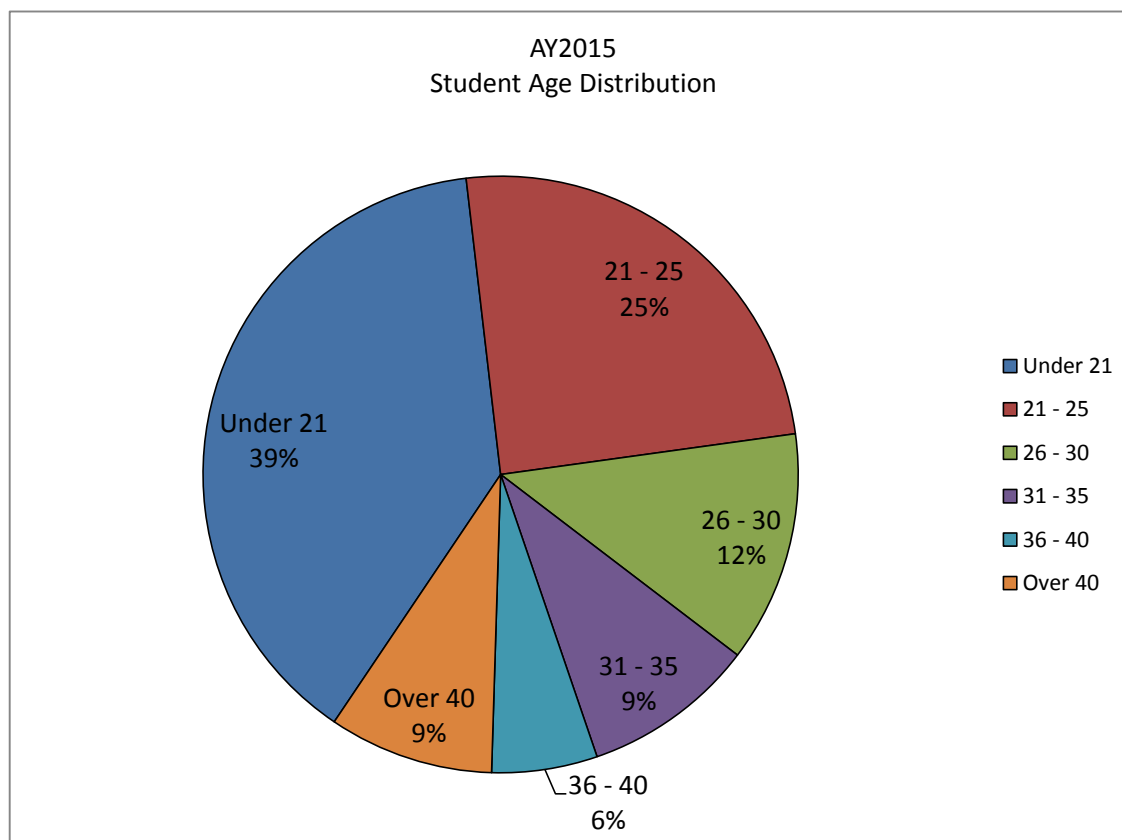


SECTION II: ENROLLMENT

Student Age Distribution (Based on Fall Quarter Enrollment)

	2012-13		2013-14		2014-15	
	AY13		AY14		AY15	
	No.	%	No.	%	No.	%
Under 21	779	31.70%	714	32.40%	877	38.70%
21 - 25	607	24.70%	585	26.50%	559	24.70%
26 - 30	354	14.40%	323	14.60%	284	12.50%
31 - 35	272	11.10%	212	9.60%	213	9.40%
36 - 40	180	7.30%	141	6.40%	130	5.70%
Over 40	266	10.8%	232	10.5%	203	9.00%
TOTAL	2458	100.00%	2207	100.00%	2266	100.00%

Source: TCSG Data Center EOY Rpt Age



SECTION II: ENROLLMENT

Student to Faculty Ratio

	Fall 2012	Fall 2013	Fall 2014	Fall 2015
Enrollment	1747	1525	1625	1667
FTE	1047	927	970	972
# Full-time Instructors	59	61	57	58
# Adjunct Instructors	49	45	42	40
Instructor FTE	75.17	75.85	71.00	71.33
Student/Faculty Ratio	13.93	12.22	13.66	13.63

Student/Faculty Ratio: Calculated by dividing Student Enrollment F.T.E. by Faculty F.T.E.

Student Enroll & FTE: From TCSG DC 126.

Faculty FTE: Calculated by full-time faculty plus 1/3 part-time faculty. – TCSG Data Center Report.

Note: This is not the IPEDS Calculation for Student to Faculty Ratio.

SECTION III

PROGRAM ENROLLMENT

SECTION III: PROGRAM ENROLLMENT

Program Enrollment

Green Text denotes Semester Conversion Title	2012-13	2013-14	2014-15
Associate Degrees	AY13	AY14	AY15
Accounting	24	17	22
Business Administrative Technology	39	29	15
Business Management Degree (formerly Management and Supervisory Development)	30	31	31
Business Technology			21
Clinical Laboratory Technology	21	18	17
C.I.S Internet Specialist/Web Site Design	14	14	0
C.I.S. Networking Specialist	17	15	0
Computer Support Specialist	10	6	10
Criminal Justice Technology	50	30	27
Dental Hygiene	31	31	32
Early Childhood Care/Education	27	20	23
Electronics Technology	11	16	19
Forestry Technology	3	7	4
Fish and Wildlife Management – no longer enrolling (formerly Fish & Game)	2	2	0
Marketing Management	9	6	8
Networking Specialist			13
Nursing			60
Radiologic Technology	9	19	21
Web Site Design/Development			9
Diplomas	AY13	AY14	AY15
Accounting	34	25	22
Air Conditioning Technology	35	20	20
Automotive Fundamentals	4	1	2
Automotive Technology	45	39	46
Business Administrative Technology	141	101	59
Business Management (formerly Management and Supervisory Development)	66	45	37
Business Technology			59
C.I.S Computer Support Specialist	34	23	22
C.I.S Internet Specialist/Web Site Design	18	13	0
C.I.S. Networking Specialist	29	22	0
Cosmetology	110	96	90
Criminal Justice Technology	101	78	58
Early Childhood Care/Education	94	95	67
Electrical Construction Technology		25	48
*(Electrical Systems Technology (formerly Electrical Construction and Maintenance)	72	48	7
Electronics Fundamentals	1	0	0
Electronics Technology	17	18	19
EMS Professions	28	35	33
Fish & Wildlife Management (formerly Game and Fish Preserve Management)	18	20	19
Forestry Technology	11	14	4

SECTION III: PROGRAM ENROLLMENT

Marketing	21	16	0
Marketing Management			8
Medical Assisting	49	38	34
Networking Specialist			18
Paramedicine (formerly Paramedic Technology)	19	20	18
Pharmacy Technology	51	43	29
Practical Nursing	87	69	67
Radiologic Technology (no longer offer diploma)	13	0	0
Surgical Technology	29	13	0
Web Site Design/Development			5
Welding and Joining Technology	93	88	79
Technical Certificates of Credit (TCC)	AY13	AY14	AY15
Administrative Support Assistant	1	1	1
Advance Emergency Medical Technical (AEMT)		0	0
Advanced Shielded Metal Arc Welder (formerly Overhead Shielded Metal Arc Welder)		2	0
Air Conditioning Technician Assistant		0	0
Auto Electrical/Electronic Systems Technician		0	0
Automotive Chassis Technician Specialist		0	10
Automotive Climate Control Technician		0	0
Automotive Engine Performance Technician		0	0
Automotive Engine Repair Technician		0	0
Automotive Transmission/Transaxle Tech Specialist		0	0
Basic Shielded Metal Arc Welder (formerly Flat Shielded Metal Arc Welder)	7	15	18
Child Development Associate (CDA) Preparation (formerly Child Development Associate I)	1	0	0
Cisco Network Specialist		0	0
Commercial Truck Driving	105	116	104
Commercial Wiring		0	1
CompTIA A+ Certified Preparation		0	0
Early Childhood Care & Education Basics (formerly Child Care Assisting)		0	3
Electrical Contracting Technician	2	1	1
Electrical Systems Assistant		0	0
Emergency Medical Technician (EMT) (formerly Intermediate)	1	0	0
Flux Cored ARC Welder	1	1	0
Entrepreneurship		1	1
Forest Technician Assistant		0	0
Gas Metal Arc Welder Fabricator	14	1	0
Gas Metal Arc Welder			10
Gas Tungsten Arc Welder	2	10	0
Health Care Assistant	430	340	331
Health Care Science	287	394	498
Help Desk Specialist (formerly Help Desk Assistant)	1	0	0
Human Resource Management Specialist	3	1	1
Internet Specialist Web Site Developer (formerly Internet Specialist Web Site Designer)		0	0
Introduction to Criminal Justice	21	21	35

SECTION III: PROGRAM ENROLLMENT

Mammography		1	3
Management and Leadership Specialist		0	0
Marketing Specialist			3
Medical Administrative Technician	108	97	82
Medical Front Office Assistant	1	0	2
Microsoft Excel Application Professional		0	0
Microsoft Network Administrator		0	0
Microsoft Office Application Professional		1	1
Microsoft Word Application Professional	1	0	0
Nurse Aide (formerly Certified Nurse Aide)	107	81	10
Nurse Aide TCC			116
Payroll Accounting Specialist		0	0
Residential Wiring Technician		1	2
Shampoo Technician		0	0
Supervisor/Management Specialist		0	0
Technical Management Specialist (formerly Visual Technical Communication)		0	0
Wildlife Management Assistant	10	13	0
Institutionally Accepted	62	54	93
Special Admit	6	5	6
Transient	6	8	11
TOTAL	2776	2458	2545

Source: TCSG Data Center Rpt #DC180
Unduplicated numbers do not equal the sum.

SECTION IV

PROGRAM LICENSURE

SECTION IV: PROGRAM LICENSURE

Program Licensure Pass Rates (Cumulative)

	2012-13	2013-14	2014-15
Program	AY13	AY14	AY15
Certified Nurse Aide	Written 88% Skills 73%	Written 100% Skills 61%	Written 97% Skills 68%
Clinical Laboratory Technology	86%	100%	86%
Commercial Truck Driving	100%	100%	98%
Cosmetology	Written 95% Skills 100%	100%	100%
Dental Hygiene	NTL Board 100% CRDTS-Pending Dec/Jan	100%	100% NTL Board & CRDTS
Advanced Emergency Medical Tech	75%	50%	67%
** Emergency Medical Technician	100%	88%	83%
Medical Assisting	93%	86%	100%
** Paramedic Technology	90%	100%	90%
Pharmacy Technology	100%	100%	83%
Practical Nursing	100%	97%	90%
Radiologic Technology	92%	100%	100%
Surgical Technology	83%	Program Closed	Program Closed

Source: Director of Allied Health Accreditation

** Students are allowed a maximum of six attempts to complete all sections of the exam; therefore, they are not counted as failing until all attempts have been exhausted. Also, students are reported during the time period in which the test is taken, not necessarily the graduating term.

SECTION V

GRADUATES

SECTION V: GRADUATES

Awards Conferred By Program

	2012-13 AY13	2013-14 AY14	2014-15 AY15
Associate Degrees			
Accounting	5	2	5
Business Administrative Technology	5	7	0
Business Management	1	5	5
Business Technology	0	0	8
Clinical Laboratory Technology	11	7	2
Computer Support Specialist	2	0	4
Criminal Justice Technology	7	1	6
Dental Hygiene	6	6	6
Early Childhood Care/Education	2	1	2
Electronics Technology	2	6	7
Forest Technology	1	2	2
Game and Fish Preserve Management	1	0	0
Internet Specialist - Web Site Design	2	1	0
Marketing Management	0	1	0
Networking Specialist	5	1	4
Radiologic Technology	0	0	6
Diplomas			
Accounting	3	6	1
Air Conditioning Technology	3	0	4
Automotive Technology	4	5	8
Business Administrative Technology	20	17	0
Business Management	4	5	1
Business Technology	0	0	19
Computer Support Specialist	5	1	2
Cosmetology	31	15	20
Criminal Justice Technology	17	8	15
Early Childhood Care/Education	6	6	7
Electrical Construction and Maintenance	1	0	0
Electrical Construction Technology	0	0	2
Electrical Systems Technology	18	8	0
Electronics Fundamentals	0	0	0
Electronics Technology	2	1	4
EMS Professions	2	1	2
Fish and Wildlife Management	0	0	3
Forest Technology	0	3	1
Game and Fish Preserve Management	2	1	0
Industrial Electrical Technology	0	0	0
Internet Specialist - Web Site Design	1	2	0
Marketing Management	0	0	0
Medical Assisting	27	23	17
Networking Specialist	1	1	1
Paramedicine	9	4	7
Pharmacy Technology	12	7	5
Practical Nursing	32	40	28

SECTION V: GRADUATES

Radiologic Technology (No longer offering diploma)	12	0	0
Surgical Technology	6	4	0
Welding and Joining Technology	12	9	4
Technical Certificates of Credit (TCC)			
Administrative Support Assistant	13	36	23
Advanced Emergency Medical Technician	5	7	5
Advanced Shielded Metal Arc Welder	12	14	8
Air Conditioning Repair Specialist	0	0	0
Air Conditioning Technician Assistant	11	2	5
Auto Electrical/Electronic Systems Technician	25	19	16
Automotive Chassis Technician Specialist	14	11	15
Automotive Climate Control Technician	14	7	9
Automotive Engine Performance Technician	13	19	14
Automotive Engine Repair Technician	16	16	7
Automotive Transmission/Transaxle Tech Specialist	11	9	7
Basic Electrical Technician	0	0	0
CAD Operator Architectural	0	0	0
Certified Nurse Aide	47	158	0
Child Care Assisting (No longer offered)	0	0	0
Child Development Associate I (No longer offered)	0	0	0
CDA Preparation TCC	1	0	0
Cisco Network Specialist	3	4	0
Commercial Truck Driving	75	72	58
Commercial Wiring	27	15	11
CompTIA A+ Certified Preparation	18	16	4
Computer Repair Technician	0	0	0
Computerized Accounting Specialist	0	0	7
Early Childhood Care And Education Basics	27	22	26
Early Childhood Program Administration	0	0	0
Electrical Contracting Technician	23	11	11
Electrical Systems Assistant	19	7	9
Emergency Medical Technician	8	0	5
Entrepreneurship	0	0	1
Basic Shielded Metal Arc Welder	26	24	23
Flux Cored ARC Weld	12	17	11
Forest Technician Assistant	3	4	5
Gas Metal Arc Welder Fabricator	18	18	14
Gas Tungsten Arc Welder	14	15	9
General Office Assistant (No longer offered)	0	0	0
Healthcare Assistant	49	50	29
Healthcare Science	6	14	13
Help Desk Assistant (No longer offered)	0	0	0
Help Desk Specialist	11	6	5
Human Resource Management Specialist	0	11	4
Imaging Science Services Assistant	6	0	0
Internet Specialist Web Site Designer (No longer offered)	0	0	0
Internet Specialist Web Site Designer (No longer offered)	0	0	0
Introduction to Criminal Justice	58	19	50
Law Enforcement Investigations (No longer offered)	0	0	0
Law Enforcement Technician (No longer offered)	1	0	0
Marketing Specialist	1	4	0
Management and Leadership Specialist	10	9	7
Medical Administrative Technician	32	25	38
Medical Front Office Assistant	14	11	6

SECTION V: GRADUATES

Medical Office Assistant (No longer offered)	0	0	1
Microsoft Excel Application User (No longer offered)	0	0	0
Microsoft Excel Application Professional	17	30	20
Microsoft Network Administrator	7	5	0
Microsoft Office Application Professional	9	16	15
Microsoft Word Application Professional	11	45	24
Network Administrator	0	0	0
Nurse Aide	0	0	85
Nurse Aide TCC	0	0	38
Office Accounting Specialist	0	0	11
Payroll Accounting Specialist	9	9	13
Residential Wiring Technician	27	12	13
Shampoo Technician	52	12	24
Supervisor/Management Specialist	21	5	5
Technical Management Specialist	3	5	0
WebSite Developer	0	0	1
Wildlife Management Assistant	13	8	9
TOTAL	614	842	922

Source: TCSG Data Center Rpt #DC109

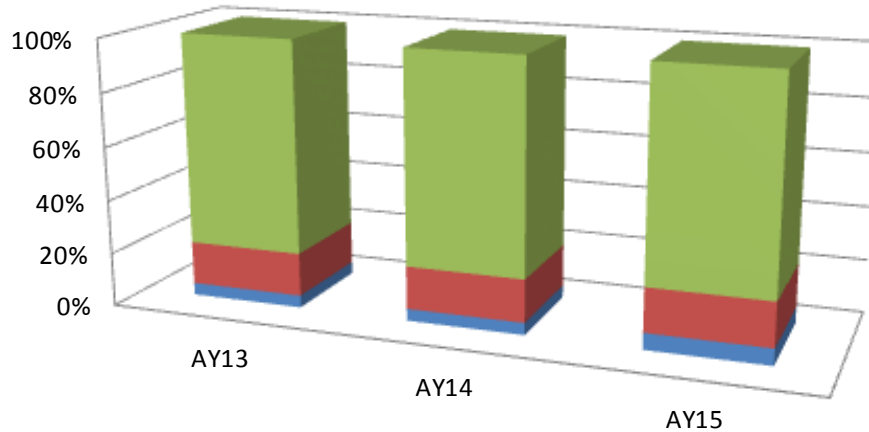
SECTION V: GRADUATES

Awards Conferred By Type

	2012-13	2013-14	2014-15
	AY13	AY14	AY15
Associate Degrees	50	48	57
Diplomas	230	170	151
Technical Certificates of Credit (TCC)	812	837	714
TOTAL	1092	1055	922

Source: TCSG Data Center Rpt #DC109

Awards Conferred By Type



	AY13	AY14	AY15
■ Technical Certificates of Credit (TCC)	79%	79%	77%
■ Diplomas	16%	16%	16%
■ Associate Degrees	5%	5%	6%

SECTION V: GRADUATES

Unduplicated Graduates & Total Placement Rates

	2012-13	2013-14	2014-15
Employment Status	AY13	AY14	AY15
Employed in Field	170	191	220
Military	1	0	1
Employed in Related Field	17	15	11
Employed in Unrelated Field	43	27	34
Employed in Field & Continued Education	1	0	2
Employed in Related Field & Continued Education	4	1	3
Employed in Unrelated Field & Continued Education	43	43	43
Continued Education	141	136	116
Not Employed	41	30	17
Not Available for Employment	6	2	8
Refused Employment	0	0	2
Status Unknown	243	253	188
Total Awards Conferred (unduplicated)	710	698	645
Placed in Field Rate * (%)	37.12%	40.04%	49.58%
Total Placement Rate ** (%)	91.11%	93.23%	96.20%

Source: TCSG Data Center Report #DC108

* Placed in Field Rate = (Emp in Field + Military + Emp in Rel Field + Emp in Field & Cont Educ + Emp in Rel Field & Cont Educ)/Total Grads - (Emp Unrel Field & Cont Educ + Cont Ed + Not Avail)

** Total Placement Rate = (Emp in Field + Military + Emp in Rel Field + Emp Unrel Field + Emp in Field & Cont Educ + Emp Rel Field & Cont Educ + Emp Unrel Field & Cont Educ + Cont Educ)/(numerator + Not Emp)

SECTION V: GRADUATES

Total Placement Rates by PAS Program Area AY2015

Program (By Major, with Total for each PAS Program Area)	Total Placement Rate	Total Award	Empld In Field	Military	Empld in Rel Field	Empld in Unrel Field	Empld In Field & Cont Ed	Empld In Rel Field & Cont Ed	Empld in Unrel Field & Cont Ed	Cont Educ	Not Empld	Unavail for Emplmt	Refused Emplmt	Status Unknown
Accounting (AC12)	100.0%	1	0	0	0	0	0	0	0	1	0	0	0	0
Accounting (AC13)	100.0%	5	5	0	0	0	0	0	0	0	0	0	0	0
Computerized Accounting Specialist (CAY1)	100.0%	7	2	0	0	0	0	0	1	3	0	1	0	0
Office Accounting Specialist (OA31)	100.0%	11	3	0	0	0	0	0	2	6	0	0	0	0
Payroll Accounting Specialist (PA61)	100.0%	13	3	0	0	0	0	0	2	7	0	0	0	1
Accounting	100.0%	37	13	0	0	0	0	0	5	17	0	1	0	1
Air Conditioning Technician Assistant (AZ31)	100.0%	5	3	0	0	0	0	0	0	1	0	0	0	1
Air Conditioning Technology (ACT2)	100.0%	4	4	0	0	0	0	0	0	0	0	0	0	0
Air Conditioning Technology	100.0%	9	7	0	0	0	0	0	0	1	0	0	0	1
Auto Electrical/Electronic Systems Technician (AE41)	100.0%	16	4	0	1	1	1	2	1	5	0	0	0	1
Automotive Chassis Technician Specialist (ASG1)	100.0%	15	5	0	1	0	1	1	3	3	0	0	0	1
Automotive Climate Control Technician (AH21)	100.0%	9	5	0	0	0	0	0	3	0	0	0	0	1
Automotive Engine Performance Technician (AE51)	100.0%	14	3	0	1	0	1	2	1	5	0	0	0	1
Automotive Engine Repair Technician (AE61)	100.0%	7	2	0	1	0	0	2	1	0	0	0	0	1
Automotive Technology (AT14)	100.0%	8	3	0	0	0	0	0	3	1	0	0	0	1
Automotive Transmission/Transaxle Tech Specialist (AA71)	100.0%	7	4	0	0	0	0	0	2	0	0	0	0	1
Automotive Technology	100.0%	76	26	0	4	1	3	7	14	14	0	0	0	7
Administrative Support Assistant (AS21)	100.0%	23	12	0	0	2	1	0	0	8	0	0	0	0
Business Technology (BA22)	100.0%	19	14	0	1	1	0	1	0	2	0	0	0	0
Business Technology (BA23)	100.0%	8	6	0	0	0	0	1	0	1	0	0	0	0
*Medical Administrative Technician (MA41)	86.5%	38	4	0	0	2	0	0	3	23	5	0	0	1
Medical Front Office Assistant (MF21)	100.0%	6	4	0	1	0	0	0	0	1	0	0	0	0
Medical Office Assistant (5DE1)	100.0%	1	1	0	0	0	0	0	0	0	0	0	0	0
Microsoft Excel Application Professional (ME51)	100.0%	20	11	0	0	0	1	1	0	6	0	0	0	1
Microsoft Office Application Professional (MF41)	100.0%	15	7	0	0	1	0	1	0	5	0	1	0	0
Microsoft Word Application Professional (MWA1)	100.0%	24	11	0	0	2	1	0	0	10	0	0	0	0
Business and Office Technology	96.7%	154	70	0	2	8	3	4	3	56	5	1	0	2
Commercial Truck Driving (CT61)	92.5%	58	33	0	0	3	0	0	0	1	3	2	0	16
Commercial Truck Driving	92.5%	58	33	0	0	3	0	0	0	1	3	2	0	16

SECTION V: GRADUATES

CompTIA A+ Certified Preparation (CA61)	100.0%	4	1	0	0	2	0	0	0	1	0	0	0	0
Computer Support Specialist (CS14)	100.0%	2	1	0	0	0	0	0	0	1	0	0	0	0
*Computer Support Specialist (CS23)	66.7%	4	1	0	0	0	0	0	0	1	1	0	1	0
Help Desk Specialist (HD41)	100.0%	5	1	0	0	1	0	0	0	2	0	0	1	0
Networking Specialist (NS13)	100.0%	4	3	0	0	0	0	0	0	1	0	0	0	0
Networking Specialist (NS14)	100.0%	1	0	0	0	0	0	0	1	0	0	0	0	0
Web Site Developer (ISE1)	100.0%	1	0	0	0	1	0	0	0	0	0	0	0	0
Computer Information Systems	94.7%	21	7	0	0	4	0	0	1	6	1	0	2	0
Cosmetology (CO12)	100.0%	20	16	0	0	2	0	0	0	0	0	2	0	0
Shampoo Technician (ST11)	100.0%	24	5	0	0	1	0	0	1	16	0	0	0	1
Cosmetology	100.0%	44	21	0	0	3	0	0	1	16	0	2	0	1
*Criminal Justice Technology (CJT2)	76.9%	15	4	0	1	0	0	0	4	1	3	0	0	2
Criminal Justice Technology (CJT3)	100.0%	6	4	0	1	0	0	0	1	0	0	0	0	0
Introduction to Criminal Justice (IT51)	96.0%	50	2	1	0	7	0	0	4	10	1	0	0	25
Criminal Justice	94.4%	71	10	1	2	7	0	0	9	11	4	0	0	27
Dental Hygiene (DH13)	100.0%	6	5	0	0	0	0	0	0	0	0	0	1	0
Dental Hygiene	100.0%	6	5	0	0	0	0	0	0	0	0	0	1	0
Early Childhood Care and Education Basics (EC31)	95.7%	26	10	0	0	0	0	0	4	8	1	0	0	3
Early Childhood Care and Education (EC13)	100.0%	2	0	0	0	1	0	0	1	0	0	0	0	0
Early Childhood Care/Education (ECC2)	100.0%	6	3	0	0	0	0	0	2	1	0	0	0	0
Early Childhood Care/Education (OO02)	100.0%	1	0	0	0	0	0	0	1	0	0	0	0	0
Early Childhood Care and Education	100.0%	35	13	0	0	1	0	0	8	9	1	0	0	3
Commercial Wiring (CW31)	100.0%	11	2	0	1	1	0	0	0	7	0	0	0	0
Electrical Construction Technology (EC12)	100.0%	2	1	0	0	0	0	0	0	1	0	0	0	0
Electrical Contracting Technician (ECL1)	100.0%	11	4	0	1	0	0	0	0	6	0	0	0	0
Electrical Systems Assistant (ESA1)	100.0%	9	3	0	0	0	0	0	2	4	0	0	0	0
Residential Wiring Technician (RW61)	100.0%	13	3	0	2	0	0	0	1	7	0	0	0	0
Electrical Construction and Maintenance	100.0%	46	13	0	4	1	0	0	3	25	0	0	0	0
Electronics Technology (ET13)	100.0%	7	6	0	0	0	0	0	0	1	0	0	0	0
Electronics Technology (ET14)	100.0%	4	0	0	0	2	0	0	0	0	0	0	0	2
Electronics and Telecommunications	100.0%	11	6	0	0	2	0	0	0	1	0	0	0	2
Fish and Wildlife Management (GAF2)	100.0%	3	0	0	0	1	0	0	0	1	0	1	0	0
Forest Technician Assistant (FTA1)	100.0%	5	2	0	0	1	0	0	0	1	0	0	0	1
Forest Technology (FT12)	100.0%	1	1	0	0	0	0	0	0	0	0	0	0	0
Forest Technology (FT13)	100.0%	2	0	0	0	0	0	0	1	1	0	0	0	0
Wildlife Management Assistant (WP11)	100.0%	9	0	1	0	0	0	0	0	4	0	1	0	3
Forestry Technology	100.0%	20	3	1	0	2	0	0	1	7	0	2	0	4
Health Care Assistant (HA21)	95.7%	29	11	0	1	0	0	0	1	9	1	0	0	6
Health Care Science (HS21)	90.0%	13	4	0	1	0	0	0	2	2	1	0	0	3
Health Care Assistant	93.9%	42	15	0	2	0	0	0	3	11	2	0	0	9

SECTION V: GRADUATES

Business Management (MD12)	100.0%	1	0	0	0	0	0	0	1	0	0	0	0	0
Business Management (MD13)	100.0%	5	2	0	2	0	0	0	1	0	0	0	0	0
Human Resource Management Specialist (HRM1)	100.0%	4	3	0	0	0	0	0	1	0	0	0	0	0
Management and Leadership Specialist (MAL1)	100.0%	7	5	0	1	0	0	0	1	0	0	0	0	0
Supervisor/Management Specialist (SS31)	100.0%	5	3	0	1	0	0	0	1	0	0	0	0	0
Management-Supervisory Development	100.0%	22	13	0	4	0	0	0	5	0	0	0	0	0
Entrepreneurship (EN11)	100.0%	1	0	0	0	0	0	0	0	1	0	0	0	0
Marketing Management	100.0%	1	0	0	0	0	0	0	0	1	0	0	0	0
Medical Assisting (MA22)	93.8%	17	14	0	0	1	0	0	0	0	1	0	0	1
Medical Assisting	93.8%	17	14	0	0	1	0	0	0	0	1	0	0	1
Clinical Laboratory Technology (CLT3)	100.0%	2	1	0	0	1	0	0	0	0	0	0	0	0
Medical Laboratory Technology	100.0%	2	1	0	0	1	0	0	0	0	0	0	0	0
Advanced Emergency Medical Technician (AEMT) (EMH1)	100.0%	5	4	0	0	1	0	0	0	0	0	0	0	0
EMS Professions (EP12)	100.0%	2	2	0	0	0	0	0	0	0	0	0	0	0
Emergency Medical Technician (EMT)(EMJ1)	100.0%	5	3	0	0	1	0	0	0	0	0	1	0	0
Paramedicine (PT12)	100.0%	7	7	0	0	0	0	0	0	0	0	0	0	0
Paramedic Technology	100.0%	19	16	0	0	2	0	0	0	0	0	1	0	0
Pharmacy Technology (PT22)	100.0%	5	2	0	1	0	0	0	0	1	0	0	0	1
Pharmacy Technology	100.0%	5	2	0	1	0	0	0	0	1	0	0	0	1
Nurse Aide (CN21)	100.0%	85	16	0	0	1	0	0	8	22	0	0	0	38
Nurse Aid TCC (NAT1)	100.0%	38	2	0	0	4	0	0	1	17	0	0	0	14
*Practical Nursing (PN12)	87.0%	28	18	0	1	0	0	0	1	0	3	0	0	5
Practical Nursing and Related Programs	96.7%	151	36	0	1	5	0	0	10	39	3	0	0	57
*Radiologic Technology (RT24)	83.3%	6	5	0	0	0	0	0	0	0	1	0	0	0
Radiologic Technology	83.3%	6	5	0	0	0	0	0	0	0	1	0	0	0
Advanced Shielded Metal Arc Welder (OSM1)	100.0%	8	6	0	0	0	0	0	0	2	0	0	0	0
Basic Shielded Metal Arc Welder (FS31)	100.0%	23	8	0	0	2	0	0	2	5	0	0	0	6
Flux Cored ARC Welder (FC61)	100.0%	11	5	0	0	1	0	0	0	4	0	0	0	1
Gas Metal Arc Welder (GM31)	100.0%	14	5	0	0	1	0	0	0	4	0	0	0	4
Gas Tungsten Arc Welder (GTA1)	100.0%	9	4	0	0	1	0	0	0	2	0	0	0	2
Welding and Joining Technology (WAJ2)	100.0%	4	2	0	0	2	0	0	0	0	0	0	0	0
Welding and Joining Technology	100.0%	69	30	0	0	7	0	0	2	17	0	0	0	13

Source: TCSG Data Center Report #DC112

*Programs with Placement <90%

SECTION VI

FINANCIAL AID

Amount of Financial Aid Awards

	2012-13 (AY13)		2013-14 (AY14)		2014-15 (AY15)	
	Total Undupl. Recipients	Total Award Amount	Total Undupl. Recipients	Total Award Amount	Total Undupl. Recipients	Total Award Amount
State Aid						
HOPE Diploma Tuition						
HOPE Diploma Fees						
HOPE Total					1,436	\$1,164,930
Zell Miller Grant					274	\$397,528
Total Awards	2,167	\$1,483,225.49	2,131	\$1,490,041.98	1,710	\$1,562,458
HOPE Degree Tuition						
HOPE Degree Fees						
HOPE Total			70	\$74,646.01	92	\$105,885
Zell Miller Scholarship	2	\$3,875	2	\$1,360	2	\$3,649
Total Awards		\$63,149	72	\$76,006.01	94	\$109,534
Strategic Industries Workforce Development Grant			142	\$88,195.87	290	\$189,625
Strategic Industries Workforce Development Grant (Truck Driving)			110	\$106,917.83	90	\$91,000
Total Awards				\$195,113.70	380	\$280,625
ACCEL Tuition						
ACCEL Fees						
ACCEL Books						
Total Awards	63	\$40,380	54	\$56,015	95	\$81,168
GED Awards	39	\$19,500	46	\$23,000	14	\$7,000
Title IV Awards						
Federal PELL Grant	1,777	\$3,709,509.55	1,560	\$2,992,852.70	1,477	\$3,029,707.71
Federal FSEOG Grant	344	\$84,268	325	\$69,613	267	\$70,133
Federal Work-Study	34	\$91,563.29	31	\$78,132.02	27	\$70,487.56
Total Awards		\$3,885,340.84	1,916	\$3,140,597.72	1,771	\$3,170,328
Loans						
Subsidized Loans	1,012	\$2,342,113	0	0	0	0
Unsubsidized Loans	819	\$2,178,716	0	0	0	0
GSFC Student Access Loans				\$201,161	268	\$833,166.03
Private Loans						
Fifth Third Bank			4	\$15,244	0	0
Sallie Mae			26	\$136,717	37	\$205,334
Wells Fargo			7	\$43,713	3	\$27,875
Total Loans		\$4,520,829		\$396,835		\$233,209
Total Awards for Year		\$10,016,296.33		\$5,377,609.41		\$6,277,488.03
Total Receiving Aid						

Source: STC Director of Financial Aid

SECTION VII

FACULTY AND STAFF

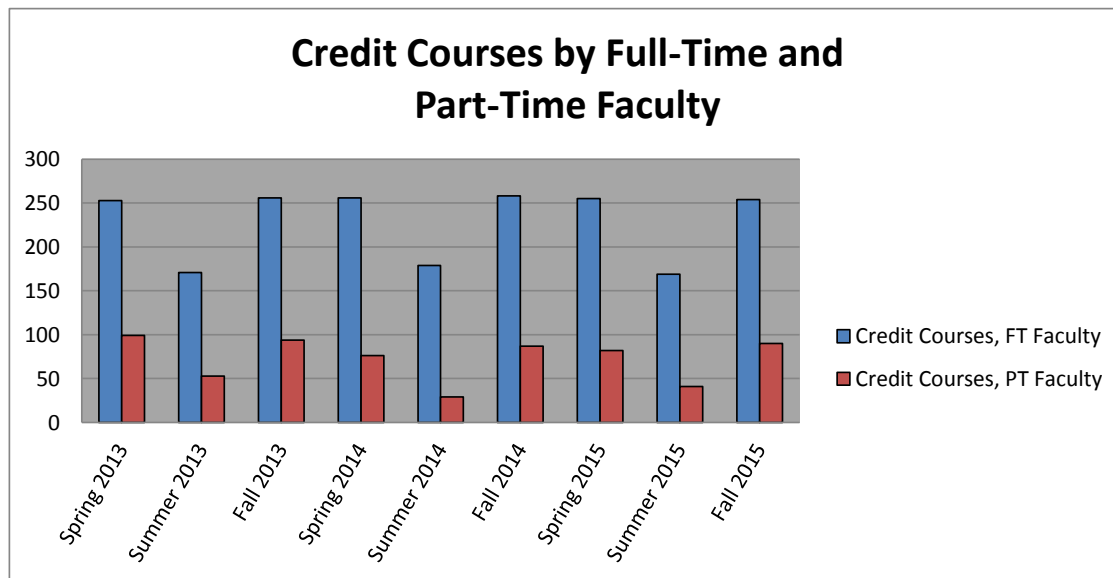
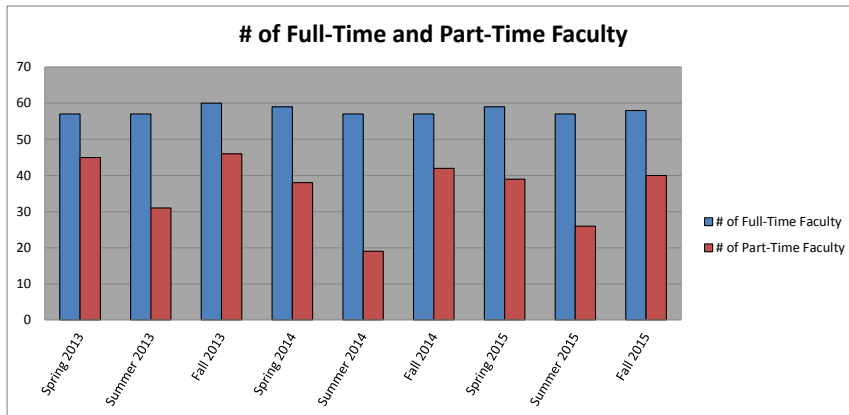
SECTION VII: FACULTY AND STAFF

Credit Courses Taught by Full-Time and Part-Time Faculty

	Spring 2013	Summer 2013	Fall 2013	Spring 2014	Summer 2014	Fall 2014	Spring 2015	Summer 2015	Fall 2015
# of Full-Time Faculty	57	57	60	59	57	57	59	57	58
# of Part-Time Faculty	45	31	46	38	19	42	39	26	40
	Spring 2013	Summer 2013	Fall 2013	Spring 2014	Summer 2014	Fall 2014	Spring 2015	Summer 2015	Fall 2015
Credit Courses, FT Faculty	253	171	256	256	179	258	255	169	254
Credit Courses, PT Faculty	99	53	94	76	29	87	82	41	90
Total # of Credit Courses	352	224	350	332	208	345	337	210	344
% Taught by FT Faculty	72%	76%	73%	77%	86%	75%	76%	80%	74%
% Taught by PT Faculty	28%	24%	27%	23%	14%	25%	24%	20%	26%

Source: SQL Rpt FacultyInfoForFactBook2.brw and ScheduleByInstructor

SECTION VII: FACULTY AND STAFF

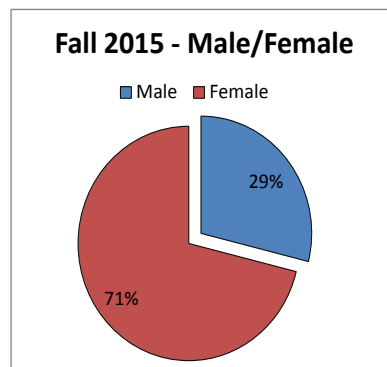
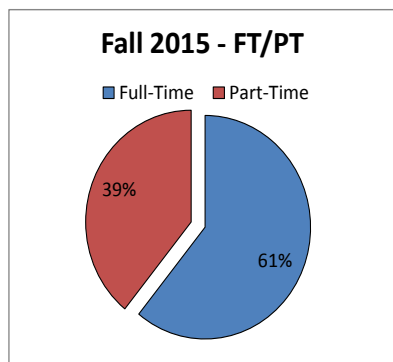


SECTION VII: FACULTY AND STAFF

Faculty Demographics Fall 2015

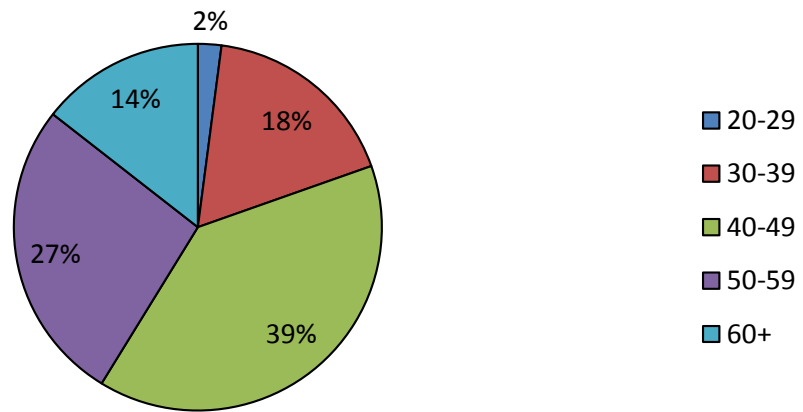
		Full-Time	Part-Time	Total
Gender	Male	18	10	28
	Female	41	28	69
Ethnicity	Black	3	6	9
	White	54	32	86
	Other	2	0	2
Highest Earned Degree	Doctorate	1	1	2
	Specialist	0	0	0
	Masters	37	12	49
	Baccalaureate	8	7	15
	Associate	6	2	8
	Diploma	6	12	18
	Technical Certificate	0	0	0
	Work Experience	2	5	7
Age	20-29	1	1	2
	30-39	5	12	17
	40-49	29	9	38
	50-59	20	6	26
	60+	4	10	14

Source: SQL Rpt FacultyInfoForFactBook2.brw

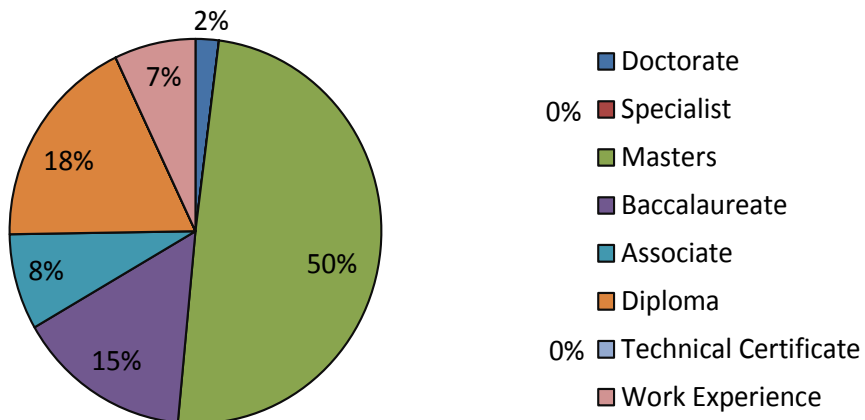


SECTION VII: FACULTY AND STAFF

Fall 2015 Faculty Age



Fall 2015 - Faculty Highest Earned Degree



SECTION VIII

LIBRARY RESOURCES

SECTION VIII: LIBRARY RESOURCES

Services

Reference questions

Ask A Librarian Form Usage			
	AY2013	AY2014	AY2015
General Question	15	7	14
GALILEO	5	3	0
NetLibrary	0	0	0
Total	20	10	14
Reference Questions	208	306	298

Interlibrary Loans

ILL			
	AY2013	AY2014	AY2015
Borrowing	32	94	45
Lending	132	113	85
Total	164	207	130

Bibliographic Instruction Summary

	AY 13		AY 14		AY 15	
	Sessions	Attendees	Sessions	Attendees	Sessions	Attendees
Summer	6	100	8	150	3	98
Fall	12	364	14	403	9	420
Spring	10	294	10	265	4	144
Totals	28	758	32	818	16	662

SECTION VIII: LIBRARY RESOURCES

Resources

Circulation

	AY13	AY14	AY 15
Check outs	1,921	1,836	1,175
In-house use	4	0	1
Check ins	0	1,662	1,317
Renewals	603	280	168
Total	2,528	3,778	2,661

GALILEO

GALILEO usage, with comparison to four other TCSG colleges

School	Enrollment Fall Semester 2015	Keyword	Full Text	Citations	Logins	Links Chosen	Total
North Georgia	2,664	19,862	7,581	8,192	2,819	4,890	43,344
South Georgia	1,658	20,594	5,365	3,760	1,038	1,419	32,176
Southern Regional	1,552	20,894	10,232	9,551	3,716	4,642	49,035
Southeastern	1,625	18,154	8,262	10,660	2,901	2,255	42,232

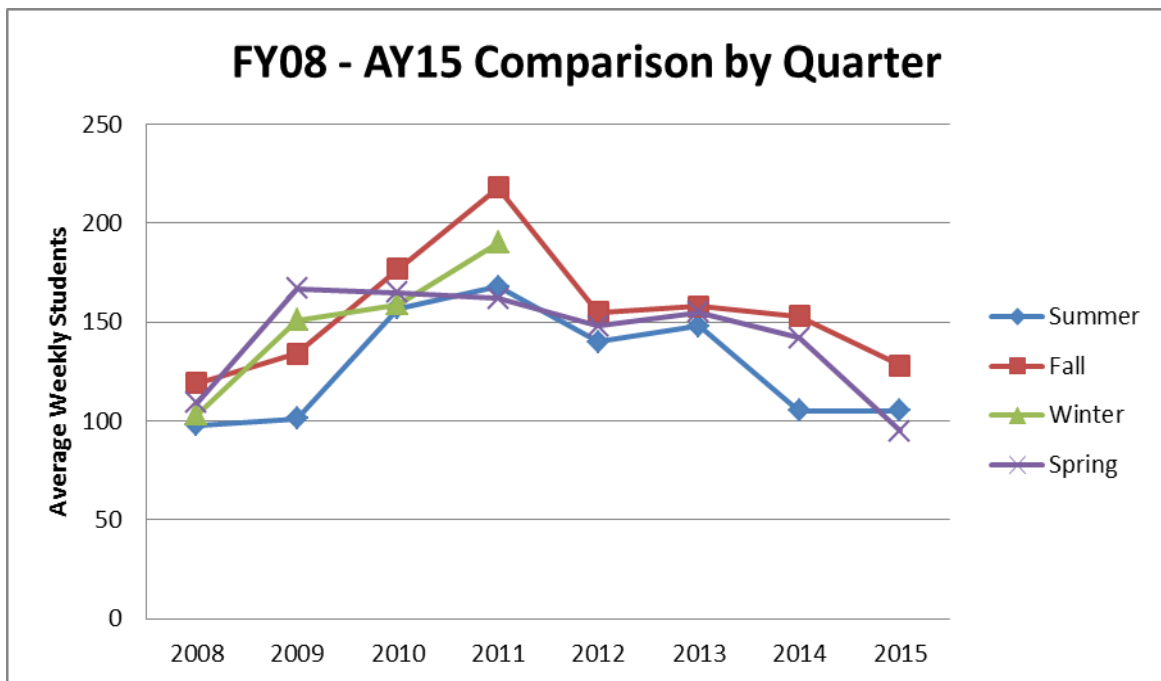
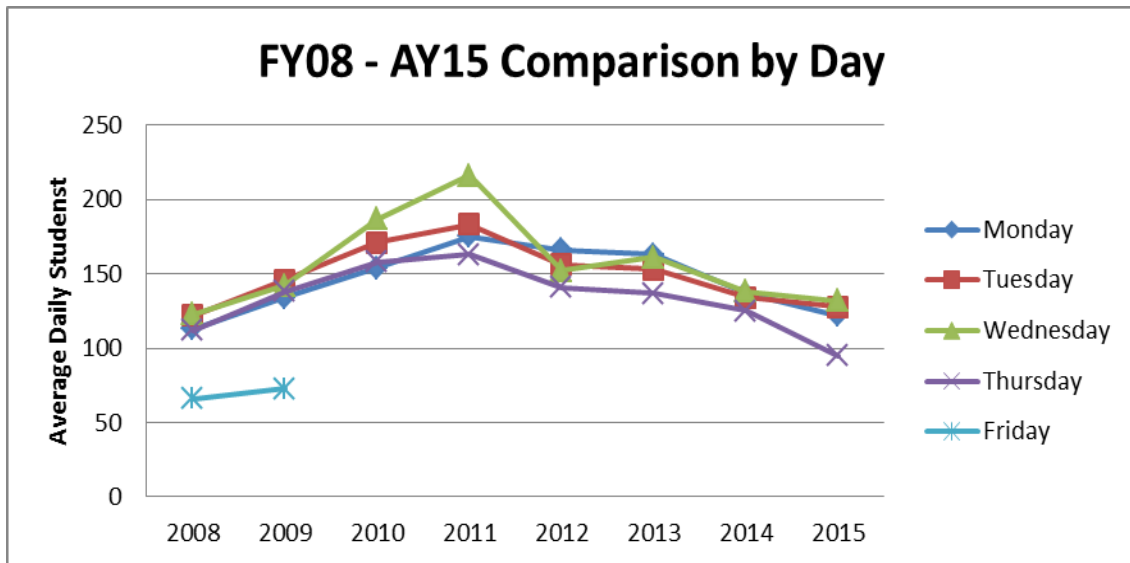
Databases made available through GALILEO, paid for locally.

- Cumulative Index to Nursing and Allied Health Literature (CINAHL)
- Encyclopedia Britannica
- Gale Encyclopedia of Alternative Medicine, 2nd ed.
- Gale Encyclopedia of Espionage, Intelligence and Security
- Gale Encyclopedia of Surgery, a Guide for Caregivers and Patients
- Magill's Medical Guide
- Mometrix
- Salem Press

SECTION VIII: LIBRARY RESOURCES

Access

8 Year Comparison, Library Attendance, Vidalia



SECTION IX

**CONTINUING EDUCATION
and
ECONOMIC DEVELOPMENT**

SECTION X: COLLEGE SCORECARD

Adult Education

	AY 2013	AY 2014	AY 2015
Students Served	1615	1389	1024
Contact Hours	96,352	80,184	67,015
Level Completions	645	618	494
GEDs Awarded	442	472	123

Adult Education Enrollment by County

County	AY 2013	AY 2014	AY 2015
Candler	134	103	92
Emanuel	470	430	221
Jenkins	150	128	93
Johnson	94	84	62
Montgomery	32	36	21
Tattnall	188	131	188
Toombs	363	237	206
Treutlen	180	239	141
Total	1611	1388	1024

ESL Enrollment by County

County	AY 2013	AY 2014	AY 2015
Candler	0	5	0
Emanuel	0	7	0
Jenkins	0	2	0
Johnson	0	1	0
Montgomery	0	0	0
Tattnall	4	17	0
Toombs	0	27	0
Treutlen	0	3	0
Total	4	62	0

ESL Contact Hours by County

County	AY 2013	AY 2014	AY 2015
Candler	0	341	0
Emanuel	0	123	0
Jenkins	0	367	0
Johnson	0	24	0
Montgomery	0	0	0
Tattnall	218	838	0
Toombs	0	875	0
Treutlen	0	126	0
Total	218	2694	0

Source: Ex. Dir. of Adult Education

SECTION X: COLLEGE SCORECARD

Economic Development Services Data

Enrollment (People Served)

Department	AY 2013	AY 2014	AY 2015
Continuing Ed	585	420	365
Conferencing	4,727	3,241	3,083
Community Med/Emergency Training	11,792	13,437	11,936
Contract Training	3,613	3,598	3,295
Total	19,117	20,696	18,679

Revenue (\$)

Department	AY 2013	AY 2014	AY 2015
Continuing Ed	19,368	20,823	17,907
Conferencing	26,248	19,020	16,537
Community Med/Emergency Training	121,741	124,768	11,7300
Contract Training	116,272	105,678	91,673
Total	283,629	270,389	243,237

Source: VPEDP

SECTION X: COLLEGE SCORECARD

Quick Start Companies Served AY 15

MI Metals	HotSet
Nordson	Crider Foods

Contract Training Companies Served AY 15

Georgia Correctional Industries	Rogers State Prison
Crider, Inc.	Tumi Luggage
Mayo Clinic	Local Banks
Plant Hatch	Various Small Businesses
Chicken of the Sea	Nordson
Candler EMS	Husqvarna
Concerted Services	Emanuel Medical Center
Ogeechee Steel	Wheeler Correctional
Vidalia Auto Salvage	Glennville Christian Academy
Trane	Kiddie Kastle
Area Food Services	Rescue Training
Summer's Landing	Satilla Hospice
US Pet	Candler County EMS
Local Logging Businesses	Altamaha Home Care
Electrical Contractors	Appling Health Care
Heritage Homestead	Vidalia Dental
Grace Gardens	Baptist Village
Bethany Home	Atlantic Homeaid
Steel Fab Companies	Candler County Hospital
Dot Foods	Georgia Connections Academy
Savannah Luggage	Georgia Cyber Academy
Local Entrepreneurs	Georgia REAL
Georgia State Prison	Social Security Administration
Meadows Regional Medical Center	Georgia Academy of Economic Development
Cindy's Day Care	Toombs-Montgomery Chamber
Meridy's	Toombs County Development Authority
Rayonier	DFACS
Oxford	SECCA

Small Business Assistance Services

Service	AY 2013	AY 2014	AY 2015
Business Startup Kits Distributed	23	24	23
Small Business Contacts	56	60	56
Business Starts	11	11	8

SECTION X
COLLEGE SCORECARD

SECTION X: COLLEGE SCORECARD

Southeastern Technical College 2014 and 2015 Performance Goals & Benchmarks



Are We Hitting Our Mark?

Colleges set only the benchmarks indicated with a box in the last column.

The CCG goal each year is a 4.7% increase over the previous year, based on TCSG's system target of 79,531 additional graduates from 2009 to 2020.

Technical Education and Economic Development goals are set by each college.

Adult Education uses the RFA committed NRS Enrollment starting with 2016 (for 2015 and prior it was set by each college), and the state negotiated goals between TCSG and USDOE for the other Adult Ed metrics.

Complete College Georgia (CCG) - Degree Production Goal

	<u>2014 Goal</u>	<u>2014 Actual</u>		<u>2015 Goal</u>	<u>2015 Actual</u>		<u>2016 Goal</u>
CCG Graduates	552	556 ✓		577	505 ✗		604

CCG Graduates are a subset of the college's total graduates. It is an unduplicated count of graduates who are not in high school and received an award that is a TCC less than one year leading to an industry certification or licensure, a TCC more than one year, a Diploma or an Associate Degree.

The CCG actual graduate numbers are final.

TECHNICAL EDUCATION

	<u>2014 Goal</u>	<u>2014 Actual</u>		<u>2015 Goal</u>	<u>2015 Actual</u>		<u>2016 Goal</u>
Retention Rate	66.0%	69.7% ✓ 232 / 333		60.0%	67.8% ✓ 227 / 335		65.0%
Graduation Rate	66.0%	70.4% ✓ 1,306 / 1,856		60.0%	75.3% ✓ 1,204 / 1,600		65.0%
FTE	1,300	1,111 ✗		1,200	1,146 ✗		1,200
High School Enrollment	200	186 ✗		225	296 ✓		250

The TECHNICAL EDUCATION actual data is final.

ECONOMIC DEVELOPMENT

	<u>2014 Goal</u>	<u>2014 Actual</u>		<u>2015 Goal</u>	<u>2015 Actual</u>		<u>2016 Goal</u>
Customized Contract Training: Companies Trained	65	85 ✓		70	55 ✗		65
Customized Contract Training: Trainee Contact Hours	38,000	41,715 ✓		39,000	47,417 ✓		42,000

The ECONOMIC DEVELOPMENT actual data is final.

SECTION X: COLLEGE SCORECARD

Southeastern Technical College

Page 2 of 2

Colleges set only the benchmarks indicated with a box in the last column.

ADULT EDUCATION

	2014 Goal	2014 Actual		2015 Goal	2015 Actual		2016 Goal
NRS Enrollment in ABE/ASE/ESL	1,500	1,297	⊗	1,250	972	⊗	1,400
Completions by Educational Functioning Level:							
ABE1	45.0%	49.1% 28 / 57	✓	54.0%	55.3% 21 / 38	✓	58.0%
ABE2	45.0%	49.2% 120 / 244	✓	52.0%	50.0% 102 / 204	⊗	53.0%
ABE3	47.0%	47.2% 208 / 441	✓	52.0%	53.5% 159 / 297	✓	53.0%
ABE4	39.0%	47.0% 179 / 381	✓	45.0%	47.8% 153 / 320	✓	47.0%
ASE1	41.0%	41.5% 44 / 106	✓	47.0%	56.6% 47 / 83	✓	52.0%
ASE2	NA	58.2% 39 / 67		NA	40.0% 12 / 30		NA
ESL1	40.0%			50.0%			52.0%
ESL2	46.0%	100.0% 1 / 1	✓	54.0%			56.0%
ESL3	50.0%			54.0%			57.0%
ESL4	48.0%			50.0%			57.0%
ESL5	40.0%			43.0%			50.0%
ESL6	30.0%			44.0%			50.0%
Total ABE/ASE/ESL	NA	47.7% 619 / 1,297		NA	50.8% 494 / 972		NA
Obtained a GED	69.0%	84.0% 189 / 225	✓	73.0%	67.2% 39 / 58	⊗	85.0%
Entered Postsecondary	25.0%	30.1% 71 / 236	✓	25.0%	34.3% 23 / 67	✓	28.0%
Entered Employment	26.0%	35.2% 144 / 409	✓	39.0%	38.8% 127 / 327	⊗	42.0%

The ADULT EDUCATION actual data is final.

Source: TCSG Data Center Rpt #DC198