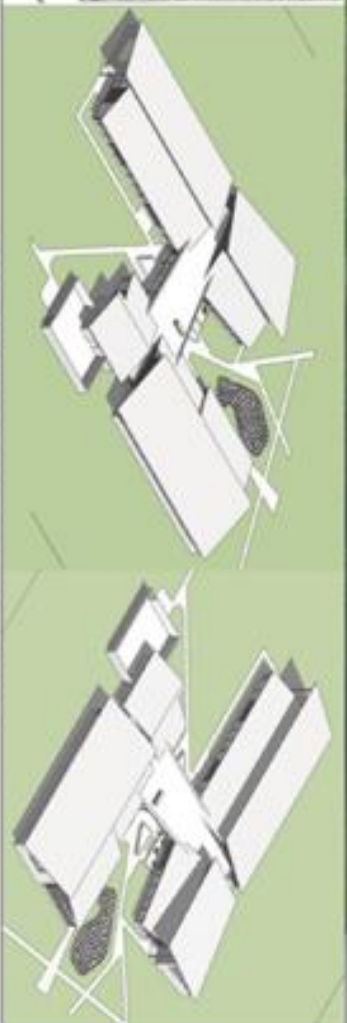
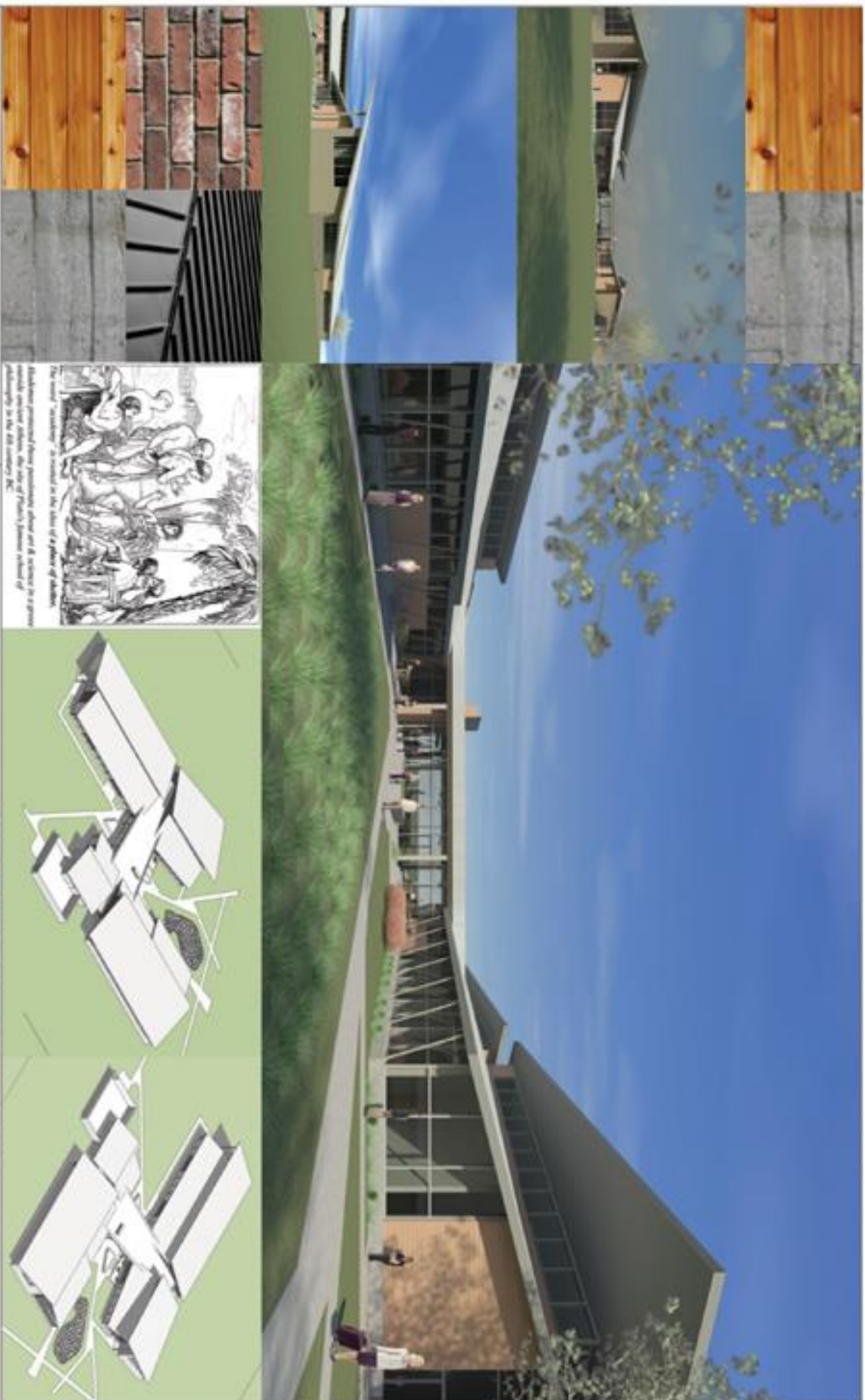




2012 Fact Book



TCSC-202 SOUTHEASTERN TECHNICAL COLLEGE

HEALTH SERVICES CENTER AND LIBRARY BUILDING

Swainsboro, Georgia

© 2012 Southeastern Technical College. All rights reserved. No part of this publication may be reproduced without permission in writing from the publisher.

TCSC-202

Achieving the Dream in Our Community

Table of Contents

SECTION I GENERAL INFORMATION	1
SECTION II ENROLLMENT	15
SECTION III PROGRAM ENROLLMENT	25
SECTION IV PROGRAM LICENSURE	29
SECTION V GRADUATES.....	31
SECTION VI FINANCIAL AID	39
SECTION VII FACULTY AND STAFF	41
SECTION VIII LIBRARY RESOURCES	45
SECTION IX CONTINUING EDUCATION and ECONOMIC DEVELOPMENT	49
SECTION X COLLEGE SCORECARD	53

SECTION I

GENERAL INFORMATION

SECTION I: GENERAL INFORMATION

Introduction

The Institutional Effectiveness Division is pleased to present the **2012 Southeastern Technical College (STC) *Fact Book***.

This book is intended as a single, readily accessible, consistent source of information about Southeastern Technical College. It is a summary of institutional data compiled to capture the 2012 fiscal/academic year. The Fact Book provides pertinent facts and figures valuable to administrators, faculty, students, and the public.

An aspiration of this process is to make available increasingly more useful information on an annual basis. To help in accomplishing this, we welcome your comments and suggestions for the Fact Book.

Janene Betts

Administrative Assistant to the Provost and IE Data Analyst

jbetts@southeasterntech.edu

Vincent Jackson

Director of Planning and Research

vjackson@southeasterntech.edu

Gail Ware

Vice President for Institutional Effectiveness

gware@southeasterntech.edu

SECTION I: GENERAL INFORMATION

Mission Statement

Southeastern Technical College, a unit of the Technical College System of Georgia, provides an innovative, educational environment for student learning through traditional and distance education delivery methods focused on building a well-educated, globally competitive workforce for Southeastern Georgia.

The College fulfills its mission through:

- associate degree, diploma, and technical certificate of credit programs;
- adult education;
- continuing education; and
- customized training and services.

Vision

Southeastern Technical College will be recognized as an educational leader in Southeastern Georgia. The College will deliver quality, student-centered, and accessible postsecondary education and training. The College will empower students for success, cultivating innovative and economically thriving communities and enterprises.

Southeastern Technical College Values:

- Integrity, honesty, openness, mutual respect, and personal excellence.
- Continuous improvement.
- Making a difference in teaching and learning.
- A strong, visionary Administration.
- A qualified and committed Faculty and Staff.
- Community Partnerships and citizenship.
- Safe, secure, and attractive campuses and facilities.
- Time together for planning.
- Positive attitudes and teamwork.
- Accessible and affordable, quality programs and services.
- Professional Development.
- Communication.
- Fairness, equality, and diversity.
- Workforce development.
- Marketing our uniqueness for a competitive advantage.
- Technological advancement.

SECTION I: GENERAL INFORMATION

Service Delivery Area and Campus Locations



V&J Productions®

SECTION I: GENERAL INFORMATION

Southeastern Technical College serves the geographic area of Candler, Emanuel, Jenkins, Johnson, Montgomery, Tattnall, Toombs, and Treutlen counties, which are located in southeast Georgia. The college currently offers programs at the following twelve locations:

Southeastern Technical College (Main-Vidalia Campus) is located at 3001 East First Street in Vidalia, Georgia. This location is along U.S. Highway 280 and is approximately 2.5 miles from U.S. Highway 1.

- Building 1: Administration Building (1990) 84,256 sq. ft.
Houses offices of administrative and support staff, Industrial programs, General Education classes, COS, Bookstore, and Library
- Building 2: Gillis Building (2003) 45,075 sq. ft.
Houses Allied Health programs and Business programs
- Building 3: Health Sciences Annex (2007) 10,000 sq. ft.
Houses Dental Hygiene program and has space for a future Medical program
- Building 4: Automotive Technology Training Center and Southeastern Early College and Career Academy (2011) 35,262 sq. ft.
Houses Automotive Technology and Career Academy.

Southeastern Technical College: Swainsboro Campus is located at 346 Kite Road in Swainsboro, Georgia. This location is along GA Highway 57 and is approximately 2 miles from U.S. Highway 1 and 35 miles from the Vidalia Campus.

- Building 1: (1996) 20,000 sq. ft.
Houses Administrative offices, Student Affairs, Allied Health classrooms/labs (PN, MA & PHL)
- Building 2: (1963-1979) 39,611 Sq. ft.
Houses Academic Affairs offices, Business classrooms/labs (ACC BAT, CIS, General Education & CJ), Library Resource Center, Career Center, technical classrooms/labs & ECM)
- Building 3: (1979) 10,290 Sq. ft.
Houses COS, Student Center, Bookstore, Facilities, Security & Polycom
- Building 4: (1989) 5,499 Sq. ft.
Houses Child Care Center
- Building 5: (1955) 1,200 Sq. ft.
Houses Information Services/Technical Support
- Building 6: (2003) 24,000 Sq. ft.
Houses Technology Center, Economic Development offices, General Education classrooms, Technical Division classrooms/labs (Flex Lab, ELTR, FWMT, FOR, & WLD)

SECTION I: GENERAL INFORMATION

- Building 7: (1995) 2,700 Sq. ft.
Houses Maintenance/Storage
- Building 8: (1964) 10,020 Sq. ft.
Houses Classrooms and record storage
- Building 9: (2003) 3,000 Sq. ft. Greenhouse
- Building 10: (1950) 6,899 Sq. ft.
Houses maintenance and is a warehouse storage building

Southeastern Technical College shuttered its Glennville Campus located at 211 S. Tillman Street in Glennville, Georgia at the end of AY 12. The shuttered campus is located approximately one block from U.S. Highway 301. The distance to the Glennville Campus from the Vidalia Campus is 43.4 miles.

- Building 1: Tattnall Institute Building (1916 – major renovations completed in 2004)
13,544 Sq. ft.
Houses offices, classroom space, library, and the Glennville-Tattnall Museum
- Building 2: Allied Health Building (major renovations completed in 2004) 5,209 Sq. Ft.
Houses Medical Assisting and Practical Nursing programs
- Building 3: Tattnall Technology Center (2004) 7,995 Sq. ft.
Houses Adult Education and Continuing Education classes
- Building 4: Cosmetology Building (2011) 5,600 Sq. ft.
Houses classrooms, offices, and Cosmetology Lab

The Economic Development Center houses continuing education, business and industry training, and adult education programs. (2002) with 26,855 Sq. ft. In addition to these functions, the facility also serves as a regional operations center for the Technical College System of Georgia's Quick Start program. The center is located at 100-A Brinson Road in Vidalia. The Economic Development Center is located approximately one block off of U.S. Highway 280, and is 3.7 miles from Southeastern Tech's Vidalia Campus.

The Johnson County Extension Center is located at 21 Cedar Creek Drive in Wrightsville, Georgia. This location is approximately 1 mile southeast of downtown Wrightsville off of GA Highway 57 and is 25 miles from the Swainsboro Campus.(2007) 4,179 Sq. ft. It serves as an extension location for selected credit courses. Extension Campus Houses Credit Classrooms/labs, offices, and Continuing Education classes

The Candler County Center is located at 25 West Daniel Street in Metter, Georgia 25 miles from the Swainsboro Campus. (2001) with 6,100 Sq. ft. This center provides adult education classes and services to residents of Candler County. It also serves as an extension location for selected credit courses.

SECTION I: GENERAL INFORMATION

The Jenkins County Center is located at 210 Hendrix Street in Millen, Georgia 35 miles from the Swainsboro Campus (1995) with 3,500 Sq. ft. This center provides adult education classes and services to residents of Jenkins County. It also serves as an extension location for selected credit courses.

The Johnson County Center is located at 37 Georgia Avenue in Wrightsville, Georgia, 30 miles from the Swainsboro Campus (1999) with 2,400 Sq. ft. This center provides adult education classes and services to residents of Johnson County.

The Tattnall-Reidsville Adult Learning Center is located at 123 Tattnall Street in Reidsville, just off of U.S. Highway 280 (2001) with 4,591 Sq. ft. This center provides adult literacy classes and services to residents of northern Tattnall County. The building is owned and maintained by Tattnall County for Southeastern Tech's use. The center is located approximately 17 miles from the college's Vidalia Campus.

The Montgomery County Adult Literacy Center is located at 251 S. Fulton Street in Mt. Vernon. This center provides adult literacy services to residents of Montgomery County. This facility is owned and maintained by Montgomery County for Southeastern Tech's use in 2002 with 4,176 Sq. ft. The center is conveniently located just off of U.S. Highway 280 and is approximately 14.5 miles from the college's Vidalia Campus.

The Commercial Truck Driving Facility is located on Harris Industrial Boulevard in Vidalia in the Toombs Industrial Park in 2003 with 2,688 Sq. ft. The property is located a short 1.6 miles from Southeastern Technical College's Vidalia Campus. It houses the Commercial Truck Driving program.

SECTION I: GENERAL INFORMATION

Institutional Goals

The goals that will help us realize our vision and mission are to:

Guarantee student access and the opportunity for success at all levels.

Objectives:

1. Assure the quality of instruction and support services to enhance student learning.
2. Expand adult education opportunities to improve educational advancement.
3. Expand dual enrollment opportunities and other partnerships with local secondary school systems.
4. Expand options and collaborations with business and industry, other post-secondary institutions, and other state agencies.

Build the local workforce for economic vitality.

Objectives:

1. Provide excellence in economic development and community services to support attracting business /industry and creating/ expanding/ retaining jobs.
2. Support certified Work Ready and Entrepreneur Friendly programs.
3. Expand credit program offerings to match workforce needs/strategic industries.

Improve the visibility, recognized value, and support of Technical Education, Adult Education, and Workforce Training.

Objectives:

1. Maintain comprehensive marketing plan.
2. Maintain SACS/COC and appropriate program accreditations.
3. Build private financial support and increase alternative funding sources.

Enhance the College's organizational development in terms of educational delivery, facilities and equipment, and internal workforce.

Objectives:

1. Maximize efficiency and effectiveness in the delivery of quality programs and services.
2. Implement a comprehensive facilities and capital outlay plan.
3. Develop and implement plans to assure College safety, security, and business continuity.
4. Maintain innovative, cutting-edge technology and equipment to improve College operations and student learning.
5. Expand staff development and leadership training for personnel.
6. Improve faculty and staff recruitment and retention and increase the full-time faculty percentage.

SECTION I: GENERAL INFORMATION

History

During the 1987 session, the Georgia Legislature appropriated \$45,000 for the preliminary plans for a technical institute to be located in Southeast Georgia. During the 1988 session, an additional appropriation of \$5,410,000 was approved for the construction of the new institute. Other state funds totaling \$445,000 were added to the project. Additionally, the citizens of Toombs County, through a local option sales tax, contributed \$1,689,000 to the project for the construction of a 776-seat auditorium. The total funds invested in the project amounted to \$7,553,000.

Construction of Southeastern Technical Institute began in 1988. A local Board of Directors was sworn into office in July 1989. By November 1989, the Southeastern Technical Institute Foundation was incorporated. Although the facilities were still under construction, the first diploma program, Practical Nursing began in January 1990. Upon completion of construction in 1990, a dedication ceremony was held. Governor Joe Frank Harris delivered the dedicatory address.

October 1, 1990, marked the official opening of the new facility. Forty-six students enrolled in four diploma programs: Practical Nursing, Information and Office Technology, Accounting, and Cosmetology. An additional 32 students enrolled in Developmental Studies. In March 1991, nine Practical Nursing students graduated in Southeastern Tech's first commencement exercise. The institute remained constant in adding more programs to respond to the needs of the community.

In 1992, Southeastern Tech established a campus in Glennville. After having leased facilities in Glennville for a number of years, on June 14, 1994 the City of Glennville gave Southeastern Tech three buildings and the land the campus buildings are situated. Also of significance to the Glennville Campus was the award of a Community Block Development Grant to Tattnall County for the construction of a Technology Center. This facility is located on property adjacent to the Glennville campus and is utilized by Southeastern Technical College for adult literacy training, continuing education, and business and industry training.

On February 5, 1998, the State Board of the Technical College System of Georgia authorized the purchase of a building located in Vidalia to be used as the College's Economic Development Center. The building had been leased by Southeastern Technical College since 1994. Renovation of this facility was completed in October 2002. The facility also houses regional operations for the Technical College System of Georgia's Quick Start program, an organization which serves the training needs of new and expanding industries.

In 2000, the school had a 43% increase in enrollment over 1999 and a 257% increase in the continuing education department in two years. Beyond growth was the tremendous positive effect the institution has experienced through the development of a more technically skilled workforce.

On December 7, 2000, Southeastern Technical Institute officially changed its name to Southeastern Technical College. The name change was a facet of Governor Roy Barnes' Education Reform Bill. This also allowed STC to offer associate degrees and receive formula-funding based on enrollment from the State of Georgia.

SECTION I: GENERAL INFORMATION

Southeastern Technical College celebrated ten years of service to Toombs, Tattnall, and Montgomery counties while promoting the theme, "A Decade of Difference." Southeastern Technical College continued to increase enrollment and add new programs.

In 2001, the Toombs County Development Authority conveyed 15.92 acres of land in the Toombs County Industrial Park to Southeastern Technical College for the purpose of establishing a Commercial Truck Driving facility. The Commercial Truck Driving Facility was completed in June 2003.

A landmark occasion for adult literacy efforts occurred in September 2001 with the opening of the Reidsville-Tattnall County Adult Literacy Center. The facility, funded by a Community Development Block Grant (CDBG), provided a permanent home for adult literacy programs and services in Reidsville.

Construction began in November 2001 on the Medical Technology Building on the main campus. Due to unprecedented enrollment growth, funds were appropriated to construct an addition to this project.

In FY 2001, Southeastern Technical College served over 1900 students in credit programs alone. The College grew to more than 50 programs in business, health, technical and industrial fields. Online classes became available at Southeastern Technical College through the Georgia Virtual Technical Connection. Barriers of time and distance diminished as obstacles that could hinder students from receiving the education they desire and deserve.

Following the success in establishing a permanent home for adult literacy programs and services in Reidsville was the establishment of the Montgomery County Adult Literacy Center in Mt. Vernon. The construction of this facility was also established through a CDGB to Montgomery County. The Center opened in June 2002.

During FY 2002, the College had a major impact on the community as literacy classes were now able to be offered at four different sites. As previously stated, construction began on the regional medical technology building; construction started on the Glennville Campus renovations; STC added additional parking on the Vidalia campus, as well as completed the final phases for the new Economic Development Center in Vidalia.

Southeastern Technical College has experienced phenomenal growth during its relatively brief existence. Space constraints on the Vidalia campus were alleviated in January 2004 with the official opening of the Medical Technology Building.

The hallmark of the success of Southeastern Technical College is the strong local support from its service area. This modern facility stands as a finely sculptured monument to the economic growth and development of the entire region. Adult students, regardless of sex, race, age, color, religion, national origin, marital status, academic or economic disadvantage or disability may capitalize on the enhanced opportunities offered by technical education. Technical education has clearly become a desirable, attractive alternative for education for the citizens of Georgia.

In January 2008, Commissioner Ron Jackson of the Technical College System of Georgia charged a taskforce to measure the feasibility of merging two technical colleges as the first of

SECTION I: GENERAL INFORMATION

several mergers across the state. In August 2008, a plan to merge the first two colleges was approved. At its September 2008 meeting, the State Board of Technical and Adult Education determined that merger strategies were necessary throughout the state and gave approval to proceed with the mergers proposed by the Technical College System of Georgia.

Commissioner Jackson met with the Local Boards of Southeastern Technical College and Swainsboro Technical College to discuss their role during the merger process. Dr. Ray Perren, Assistant Commissioner of the TCSG, met with the college presidents to prioritize and outline the tasks before them. Southeastern and Swainsboro formed a combined Steering Committee of senior staff from both colleges to lead and manage the merger process.

Southeastern Technical College and Swainsboro Technical College had a close working relationship since the opening of Southeastern Tech in 1990. In fact, Southeastern Tech was formed from Swainsboro Tech's service delivery area. The colleges were located only 32 miles apart; therefore, they often had transient students from one another and shared many of the same community supporters, business partnerships and resources. They provided more than 15 similar programs, with many of the programs using the same books and instructional materials. The merger benefits the communities served by creating a strong, single presence with increased visibility, and a unified mission. The merged college better utilizes limited resources to be more responsive to the needs of business and industry. More efficient resource utilization allows current programs to be expanded and frees up resources to add new programs as needed in our continually changing economy. As one educational entity in the communities, the merged college better serves the communities with stronger partnerships, decreased competition for resources and fundraising, elimination of duplication, and more visibility as a stronger institution. A merged institution further enhances the programs and services provided to all communities served and broadens the opportunities in many areas.

On July 1, 2009, Swainsboro Technical College and Southeastern Technical College officially merged to form the new Southeastern Technical College, which serves Candler, Emanuel, Jenkins, Johnson, Montgomery, Tattnall, Toombs, and Treutlen counties. The Board of Trustees of the Commission on Colleges continued accreditation following review of the consolidation/merger.

In FY/AY 2012, Southeastern Technical College, a unit of the Technical College System of Georgia, successfully converted from the Quarter System to the Semester System.

Accreditation/Certification/Licensure/Approval

Southeastern Technical College is a unit of the Technical College System of Georgia.
<http://www.tcsge.edu/>

- Southeastern Technical College is accredited by the Commission on Colleges of the Southern Association of Colleges and Schools to award Associate Degrees. Contact the Commission on Colleges at 1866 Southern Lane, Decatur, GA 30033-4097 or call (404) 679-4500 for questions about the accreditation of Southeastern Technical College.
www.sacscoc.org. *Inquiries such as admission requirements, financial aid, educational programs, etc., should be addressed directly to Southeastern Technical College and not to the Commission's office. Please direct all questions to: Southeastern Technical College, 3001 E. First Street, Vidalia, GA 30474, 912.538.3100, Fax 912-538-3156.*
- The Practical Nursing program is approved by the Board of Examiners of Licensed Practical Nurses for the State of Georgia, 237 Coliseum Drive, Macon, GA 31217-3858, (478) 207-2440. <http://sos.georgia.gov/plb/lpn/>
- The Nurse Aide program is approved by the Georgia Medical Care Foundation, 1455 Lincoln Parkway East, Suite 750, Atlanta, Georgia 30346-2200. Phone number is 678-527-3010 or 800-414-4358.
- The Medical Assisting Diploma Program is accredited by the [Commission on Accreditation of Allied Health Education Programs \(www.caahep.org\)](http://www.caahep.org) upon the recommendation of the Medical Assisting Education Review Board (MAERB). Commission on Accreditation of Allied Health Education Programs, 1361 Park Street, Clearwater, FL 33756. 727/210-2350
- The Early Childhood Care and Education Paraprofessional Training program is approved by the Georgia Professional Standards Commission, Two Peachtree Street, Suite 6000, Atlanta, GA 30303, (800) 869-7775. <http://www.gapsc.com/>
- The Child Care Center on the Swainsboro campus is recognized as a Center of Distinction by the Georgia Department of Early Care and Learning.
<https://www.decal.ga.gov/>
- Southeastern Technical College is a Certified Cisco Network Academy.
<http://www.cisco.com/web/learning/netacad/index.html>
- Southeastern Technical College is a Microsoft IT Academy. The IT Academy provides tools to train students on Microsoft technologies, help them succeed in school, and prepare them for the global economy. The program includes access to a variety of curricula and certifications, software licenses, and a range of instruction from computer basics to high-level programming and architecture.
<http://www.microsoft.com/education/msitacademy/default.aspx>
- Emergency Medical Technician graduates are eligible to sit for the National Registry of EMTs, Emergency Medical Technician (EMT) Exam.
- Advanced Emergency Medical Technician (AEMT) graduates are eligible to sit for the National Registry of EMTs, Advanced Emergency Medical Technician (AEMT) Exam.
- EMS Professions graduates are eligible to sit for the National Registry of EMTs, Advanced Emergency Medical Technician (AEMT) Exam.
- Paramedicine program graduates are eligible to sit for the National Registry of EMTs, Paramedic Exam.
 - The Southeastern Technical College Paramedicine program is accredited by the Commission on Accreditation of Allied Health Education Programs (www.caahep.org) upon the recommendation of the Committee on Accreditation

SECTION I: GENERAL INFORMATION

of Educational Programs for the Emergency Medical Services Professions (CoAEMSP).

Commission on Accreditation of Allied Health Education Programs
1361 Park Street
Clearwater, FL 33756
727-210-2350
www.caahep.org

To contact CoAEMSP:
8301 Lakeview Parkway Suite 111-312
Rowlett, TX 75088
214-703-8445
FAX 214-703-8992
www.coaemsp.org

- The Technical College System of Georgia's Cosmetology curriculum is approved by the Georgia State Board of Cosmetology, <http://sos.georgia.gov/plb/cosmetology/>. Graduates are eligible to take the Master Cosmetologist Licensure Exam.
- The Surgical Technology program is accredited by the Commission on Accreditation of Allied Health Education Programs (CAAHEP) upon recommendation of the Accreditation Review Council on Education in Surgical Technology and Surgical Assisting (ARC/STSA) (www.arcst.org). Graduates are eligible to take the National Certification Exam from the National Board for Surgical Technologist and Surgical Assistants (NBSTSA)
CAAHEP, 1361 Park Street, Clearwater, FL 33756, (727) 210-1300. www.caahep.org
ARC-ST - www.arcst.org
- The Radiologic Technology program is accredited by the Joint Review Committee on Education in Radiologic Technology (JRCERT), 20 North Wacker Drive, Suite 2850, Chicago, IL 60606-3182, (312) 704-5300, www.jrcert.org. Graduates are eligible to take the National Registry Examination sponsored by the American Registry of Radiologic Technologists.
- The Clinical Laboratory Technology program is accredited by the National Accrediting Agency for Clinical Laboratory Sciences (NAACLS), 5600 N. River Road, Suite 720, Rosemont, Illinois 60018-5119, (773) 714-8880. <http://www.naacls.org>
- The Pharmacy Technology program is accredited by the American Society of Health-System Pharmacists, 7272 Wisconsin Avenue, Bethesda, MD 20814, (301) 657-3000, www.ashp.org. Graduates are eligible to take the National Pharmacy Technician Certification Exam.
- The Dental Hygiene program is accredited by the Commission on Dental Accreditation (CODA) - American Dental Association (ADA). The Commission is a specialized accrediting body recognized by the United States Department of Education. The Commission on Dental Accreditation can be contacted at (312) 440-4653 or at 211 East Chicago Avenue, Chicago, IL 60611.
<http://www.ada.org/prof/ed/accred/commission/index.asp>
Graduates are eligible to take the ADA National Board Dental Hygiene Examination and the CRDTS National Dental Hygiene Examination.
- In addition, Southeastern Technical College is a member of the following organizations:
 - The American Association of Collegiate Registrars and Admissions Officers

SECTION I: GENERAL INFORMATION

- The American Association of Community Colleges
- The National Association of College and University Business Officers
- The National Council on Student Development
- The Council for Higher Education Accreditation

SECTION II

ENROLLMENT

SECTION II: ENROLLMENT

Credit Enrollment (Unduplicated)

Headcount, Credit Hours and FTE (Full-Time Equivalency)

		2009-10	2010-11	2011-2012
		FY10	FY11	FY12
Headcount	*	3243	3234	2554
		FY10	FY11	FY12
Credit Hours		75662	76809	41339
		FY10	FY11	FY12
FTE		1680	1706	1377

Source: TCSG Data Center EOY Total Rpt

* Estimated - Banner boxes were not merged until after Sum 09

Enrollment and Credit Hours by Campus

	2009-10		2010-11		2011-2012	
	FY10		FY11		FY12	
Campus	* Enroll	Credit Hrs	Enroll	Credit Hrs	Enroll	Credit Hrs
Vidalia	2,134	50,901	2,125	50,411	1,722	28,414
Swainsboro	1,021	23,626	1,084	25,272	771	12,258
Glennville	88	1,135	64	1,126	74	667
(Unduplicated) TOTAL	3,243	75,662	** 3,234	76,809	2,567	41,339

Source: TCSG Data Center DC#135

* Estimated - Banner boxes were not merged until after Sum 09

** Unduplicated numbers do not equal the sum. If a student was assigned more than one campus during the year, they will be reported for each campus.

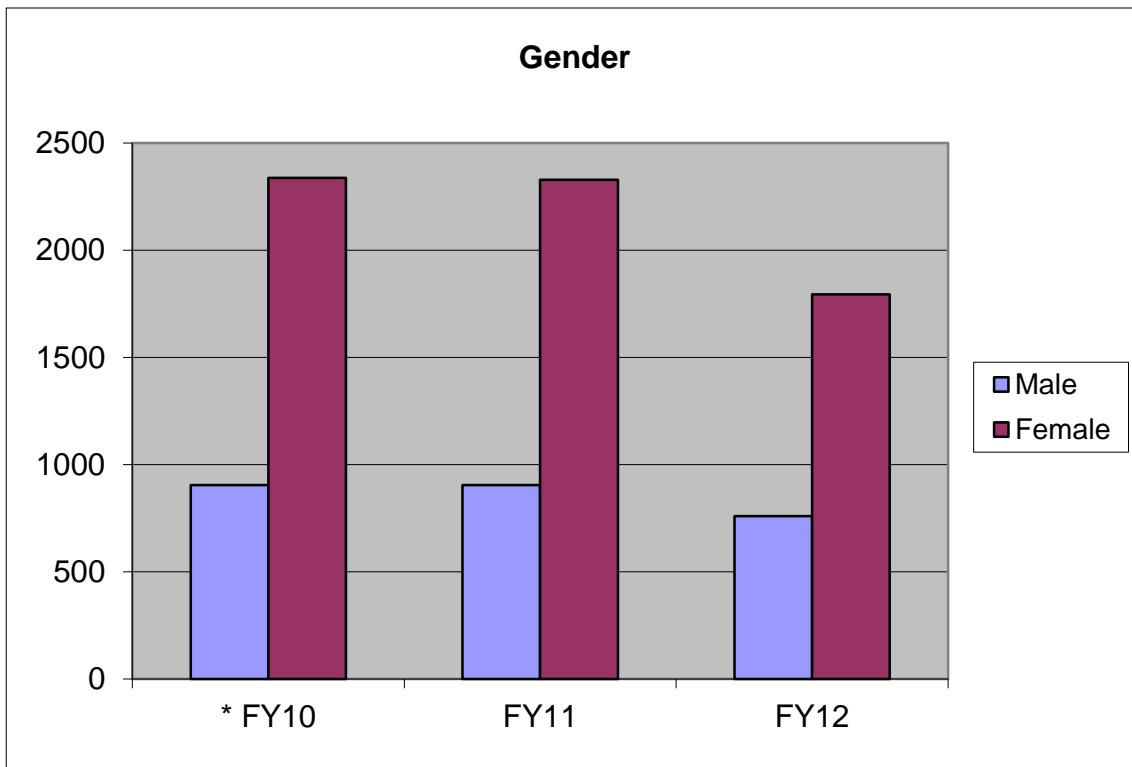
SECTION II: ENROLLMENT

Gender

	2009-10	2010-11	2011-2012
	* FY10	FY11	FY12
Male	905	905	760
Female	2338	2329	1,794
TOTAL	3243	3234	2,554

Source: TCSG Data Center EOY Gender Rpt

* Estimated - Banner boxes were not merged until after Sum 09



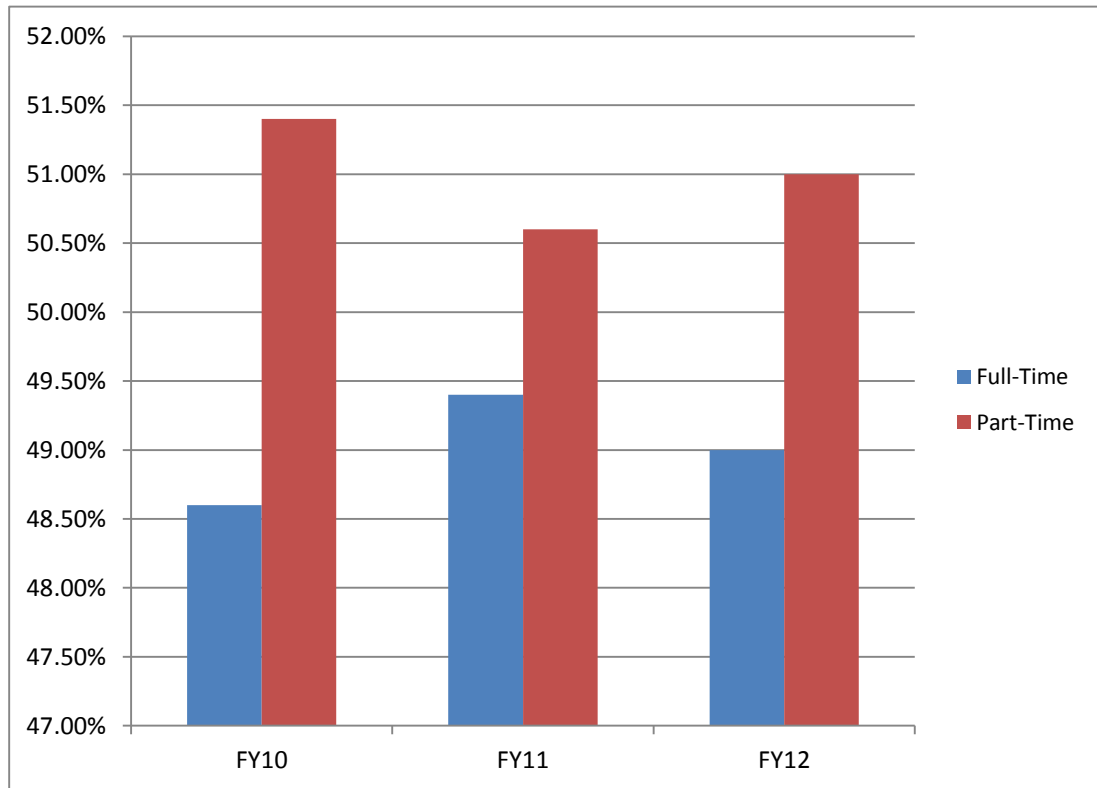
SECTION II: ENROLLMENT

Full-Time and Part-Time

(Based on Fall Quarter Enrollment)

	FY10	FY11	FY12
	Fall 2009	Fall 2010	Fall 2011
Full-Time	48.60%	49.40%	49.00%
Part-Time	51.40%	50.60%	51.00%
TOTAL	100.00%	100.00%	100.00%

Source: TCSG Data Center EOQ FTPT Rpt



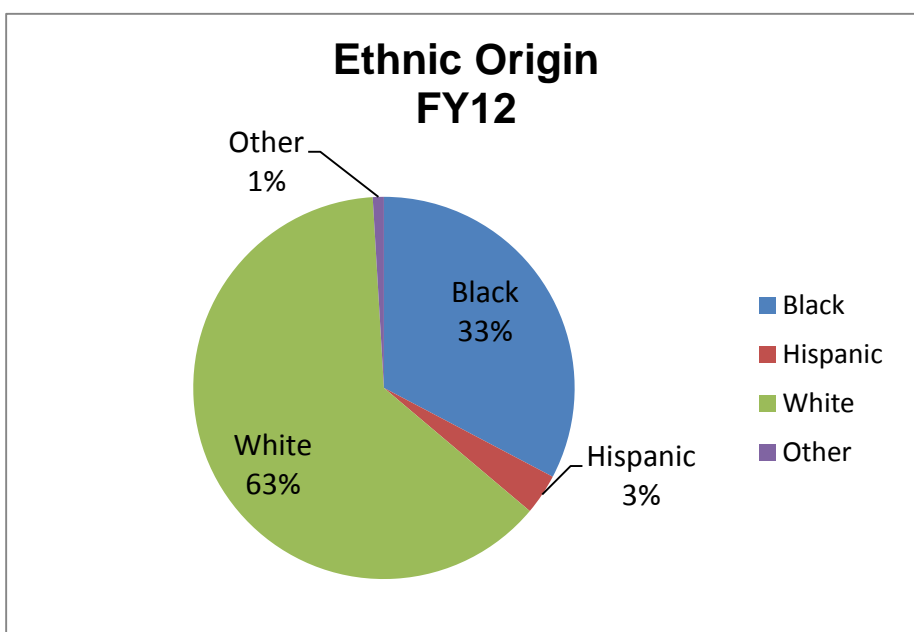
SECTION II: ENROLLMENT

Race/Ethnic Origin

	Total	American Indian		Asian		Black		Hispanic		Native Hawaiian		Two or More Races		White		Nonresident Alien		UnKnown	
		No.	%	No.	%	No.	%	No.	%	No.	%	No.	%	No.	%	No.	%	No.	%
*FY10	3,243	3	0.1%	3	0.1%	1,154	35.6%	75	2.3%	0	0.0%	6	0.2%	1,995	61.5%	1	0.0%	6	0.2%
FY11	3,233	10	0.3%	7	0.2%	1,167	36.1%	108	3.3%	1	0.0%	2	0.1%	1,931	59.7%	1	0.0%	7	0.2%
FY12	2,544	8	0.3%	2	0.1%	835	32.7%	88	3.4%	0	0.0%	10	0.4%	1,607	62.9%	2	0.1%	2	0.1%

Source: TCSG Data Center EOY Race Rpt

* Estimated - Banner boxes were not merged until after Sum 09



SECTION II: ENROLLMENT

	FY 2010 2009-2010		FY 2011 2010-2011			FY 2012 2011-2012	
County	##	%	##	%	County	##	%
Appling	72	2.20%	73	2.20%	Appling	58	2.30%
Atkinson	1	0.00%	0	0.00%	Atkinson	0	0.00%
Bacon	4	0.10%	0	0.00%	Bacon	3	0.10%
Baldwin	0	0.00%	1	0.00%	Baldwin	0	0.00%
Bartow	3	0.10%	1	0.00%	Bartow	1	0.00%
					Ben Hill	1	0.00%
Berrien	1	0.00%	1	0.00%	Berrien	1	0.00%
Bibb	3	0.10%	0	0.00%	Bibb	1	0.00%
Bleckley	3	0.10%	2	0.10%	Bleckley	1	0.00%
Brantley	1	0.00%	0	0.00%	Brantley	0	0.00%
Bryan	3	0.10%	3	0.10%	Bryan	1	0.00%
Bulloch	34	1.00%	26	0.80%	Bulloch	25	1.00%
Burke	44	1.40%	38	1.20%	Burke	27	1.10%
* Candler	95	2.90%	84	2.60%	* Candler	64	2.50%
Carroll	1	0.00%	0	0.00%	Carroll	0	0.00%
Catoosa	1	0.00%	0	0.00%	Catoosa	0	0.00%
Chatham	7	0.20%	4	0.10%	Chatham	6	0.20%
Cherokee	0	0.00%	2	0.10%	Cherokee	2	0.10%
Clayton	2	0.10%	2	0.10%	Clayton	0	0.00%
Clinch	1	0.00%	0	0.00%	Clinch	0	0.00%
Cobb	1	0.00%	1	0.00%	Cobb	0	0.00%
Coffee	3	0.10%	4	0.10%	Coffee	3	0.10%
Colquitt	1	0.00%	0	0.00%	Colquitt	0	0.00%
Columbia	1	0.00%	0	0.00%	Columbia	0	0.00%
Crisp	0	0.00%	1	0.00%	Crisp	0	0.00%
DeKalb	0	0.00%	2	0.10%	DeKalb	1	0.00%
Dodge	3	0.10%	3	0.10%	Dodge	2	0.10%
Dougherty	0	0.00%	1	0.00%	Dougherty	0	0.00%
Douglas	1	0.00%	1	0.00%	Douglas	0	0.00%
Effingham	2	0.10%	3	0.10%	Effingham	2	0.10%
Elbert	0	0.00%	1	0.00%	Elbert	0	0.00%
* Emanuel	544	16.80%	636	19.40%	* Emanuel	480	18.80%
Evans	27	0.80%	25	0.80%	Evans	25	1.00%
Fannin	0	0.00%	1	0.00%	Fannin	1	0.00%
Floyd	0	0.00%	0	0.00%	Floyd	1	0.00%
Forsyth	0	0.00%	2	0.10%	Forsyth	0	0.00%

SECTION II: ENROLLMENT

Fulton	2	0.10%	2	0.10%	Fulton	2	0.10%
Gilmer	0	0.00%	1	0.00%	Gilmer	0	0.00%
Glascocock	3	0.10%	0	0.00%	Glascocock	0	0.00%
Glynn	2	0.10%	0	0.00%	Glynn	0	0.00%
Gwinnett	2	0.10%	1	0.00%	Gwinnett	2	0.10%
Hall	0	0.00%	1	0.00%	Hall	0	0.00%
Henry	4	0.10%	2	0.10%	Henry	2	0.10%
Houston	2	0.10%	1	0.00%	Houston	0	0.00%
Irwin	0	0.00%	1	0.00%	Irwin	0	0.00%
Jackson	1	0.00%	0	0.00%	Jackson	1	0.00%
Jeff Davis	121	3.70%	98	3.00%	Jeff Davis	91	3.60%
Jefferson	64	2.00%	73	2.20%	Jefferson	48	1.90%
* Jenkins	89	2.70%	92	2.80%	* Jenkins	67	2.60%
* Johnson	97	3.00%	96	2.90%	* Johnson	79	3.10%
Lamar	1	0.00%	1	0.00%	Lamar	0	0.00%
Laurens	36	1.10%	41	1.20%	Laurens	29	1.10%
Liberty	14	0.40%	13	0.40%	Liberty	4	0.20%
Long	3	0.10%	13	0.40%	Long	5	0.20%
Lowndes	2	0.10%	1	0.00%	Lowndes	3	0.10%
Macon	1	0.00%	0	0.00%	Macon	0	0.00%
Madison	0	0.00%	0	0.00%	Madison	1	0.00%
* Montgomery	243	7.50%	206	6.30%	* Montgomery	168	6.60%
					Newton	1	0.00%
Oconee	0	0.00%	1	0.00%	Oconee	0	0.00%
Pierce	1	0.00%	3	0.10%	Pierce	2	0.10%
Richmond	7	0.20%	6	0.20%	Richmond	6	0.20%
Screven	7	0.20%	6	0.20%	Screven	1	0.00%
Stephens	0	0.00%	1	0.00%	Stephens	1	0.00%
Sumter	0	0.00%	1	0.00%	Sumter	1	0.00%
Talbot	0	0.00%	1	0.00%	Talbot	0	0.00%
* Tattnall	342	10.50%	344	10.50%	* Tattnall	315	12.30%
Telfair	39	1.20%	35	1.10%	Telfair	27	1.10%
* Toombs	1064	32.80%	1079	32.90%	* Toombs	813	31.80%
* Treutlen	127	3.90%	128	3.90%	* Treutlen	100	3.90%
Troup	0	0.00%	0	0.00%	Troup	1	0.00%
Twiggs	2	0.10%	0	0.00%	Twiggs	0	0.00%
Walker	1	0.00%	0	0.00%	Walker	0	0.00%
Walton	1	0.00%	0	0.00%	Walton	1	0.00%
Ware	2	0.10%	1	0.00%	Ware	0	0.00%
Washington	17	0.50%	13	0.40%	Washington	3	0.10%
Wayne	8	0.20%	9	0.30%	Wayne	1	0.00%
Wheeler	64	2.00%	86	2.60%	Wheeler	69	2.70%
Wilkinson	1	0.00%	0	0.00%	Wilkinson	0	0.00%
Unknown	15	0.50%	0	0.00%	Unknown	0	0.00%
Out of State:	0	0.00%	8	0.20%	Out of State:	3	0.10%

SECTION II: ENROLLMENT

** (Unduplicated) TOTAL	3243	100.00%	3283	100.00%	** (Unduplicated) TOTAL	2553	99.40%
-------------------------	------	---------	------	---------	-------------------------	------	--------

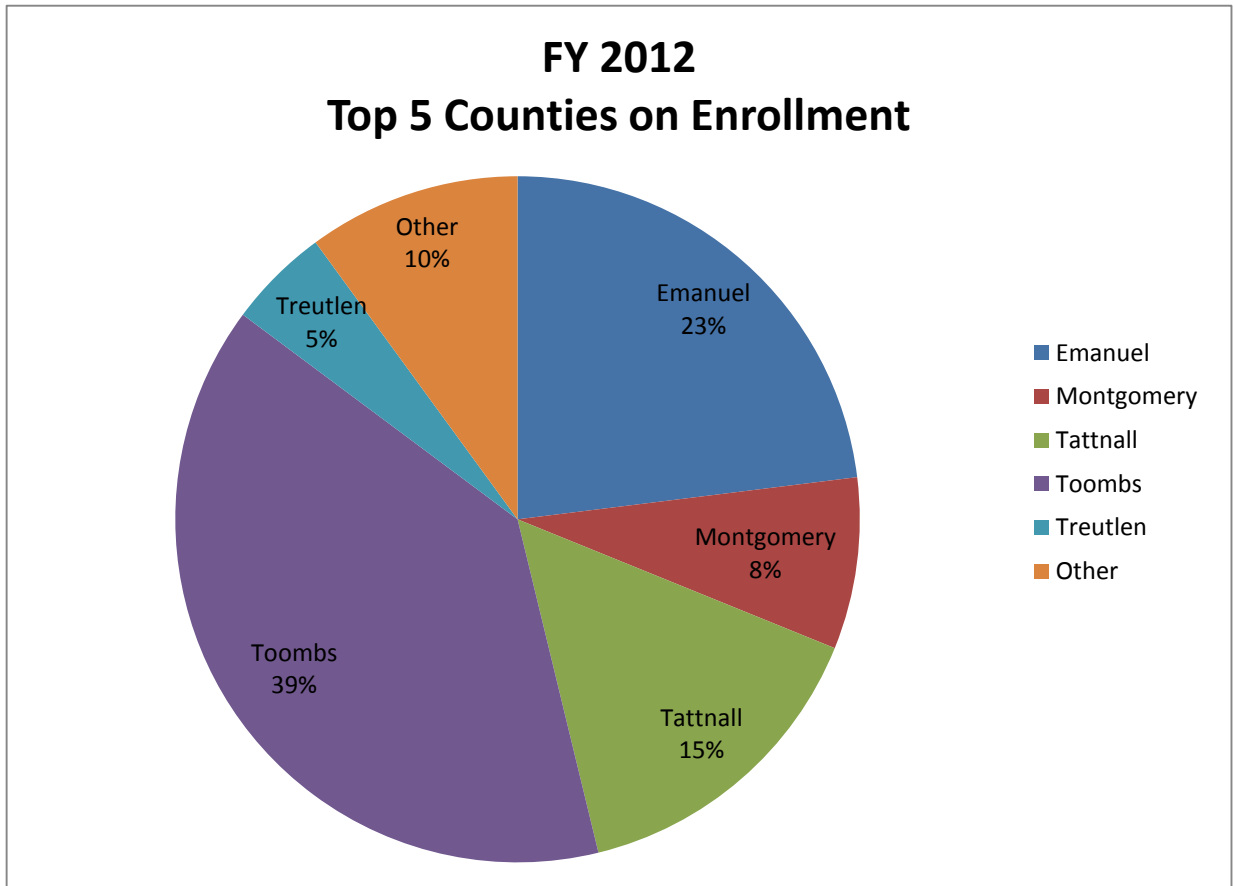
* County is in the College's Service Delivery Area (SDA)

Source: TCSG Data Center Rpt #DC 122

* Estimated - Banner boxes were not merged until after Sum 09

** Unduplicated numbers do not equal the sum.

County of Residence



SECTION II: ENROLLMENT

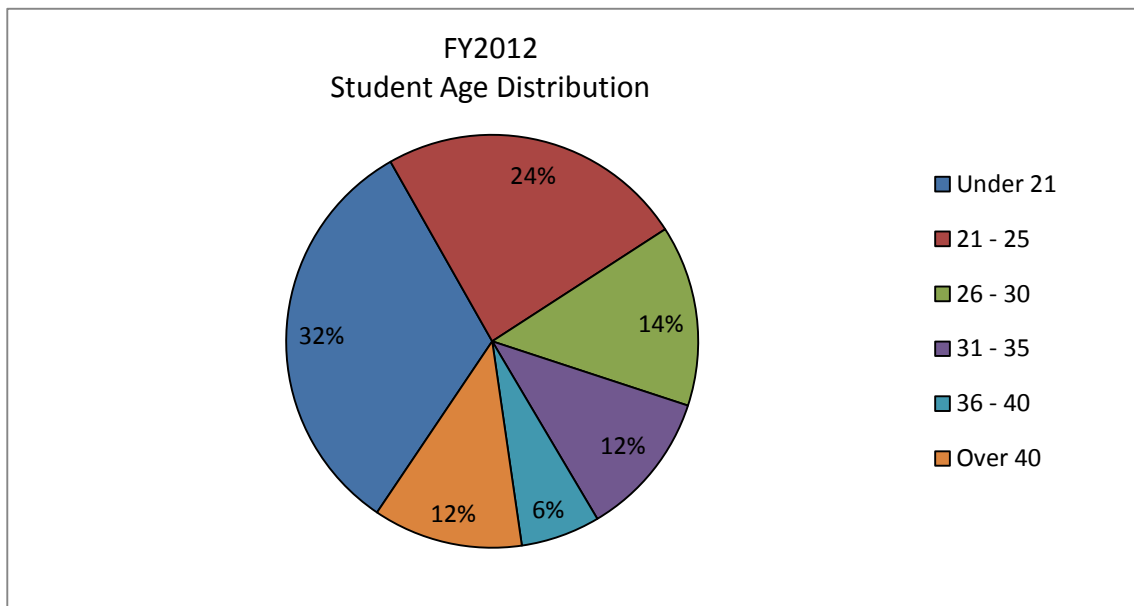
Student Age Distribution

(Based on Fall Quarter Enrollment)

	2009-10		2010-11		2011-12	
	FY10		FY11		FY12	
	No.	%	No.	%	No.	%
Under 21	655	20.20%	937	29.00%	826	32.30%
21 - 25	908	28.00%	790	24.40%	615	24.10%
26 - 30	566	17.50%	555	17.20%	362	14.20%
31 - 35	382	11.80%	341	10.50%	292	11.40%
36 - 40	273	8.40%	237	7.30%	159	6.20%
Over 40	459	14.20%	374	11.60%	300	11.70%
TOTAL	3243	100.00%	3234	100.00%	2554	100.00%

Source: TCSG Data Center EOY Rpt Age

* Estimated - Banner boxes were not merged until after Sum 09



SECTION II: ENROLLMENT

Student to Faculty Ratio

	Fall 2009	Fall 2010	Fall 2011	Fall 2012
Enrollment	1975	1995	1826	1747
FTE	1411 680	1461	1086	1047
# Full-time Instructors	59	61	62	59
# Adjunct Instructors	56	52	49	49
Instructor FTE	77.48	78.16	78.17	75.17
Student/Faculty Ratio	18.21 24.68	18.69	13.89	13.93

Student/Faculty Ratio: Calculated by dividing Student Enrollment F.T.E. by Faculty F.T.E.

Student Enroll & FTE: From TCSG DC 126.

Faculty FTE: Calculated by full-time faculty plus 1/3 part-time faculty. – TCSG Data Center Report

**Data reflects corrections in the Fall 2009 FTE and ratio.*

Note: This is not the IPEDS Calculation for Student to Faculty Ratio.

SECTION III

PROGRAM ENROLLMENT

SECTION III: PROGRAM ENROLLMENT

Program Enrollment

Green Text denotes Semester Conversion Title	2009-10	2010-11	2011-12
Associate Degrees	* FY10	FY11	FY12
Accounting	23	31	22
Business Administrative Technology	22	32	39
Business Management Degree (formerly Management and Supervisory Development)	15	19	22
Clinical Laboratory Technology	17	22	19
C.I.S Internet Specialist/Web Site Design	7	5	11
C.I.S. Networking Specialist	11	12	22
Computer Support Specialist	9	19	7
Criminal Justice Technology	36	46	53
Dental Hygiene	19	22	33
Early Childhood Care/Education	33	30	23
Electronics Technology	15	18	19
Forestry Technology	7	11	12
Fish and Wildlife Management – no longer enrolling (formerly Fish & Game)	4	8	0
Marketing Management	5	5	5
Radiologic Technology			

Diplomas	FY10	FY11	FY12
Accounting	53	64	38
Air Conditioning Technology	40	45	35
Automotive Technology			
Business Administrative Technology	170	204	157
Business Management (formerly Management and Supervisory Development)	50	57	41
C.I.S Computer Support Specialist	53	54	44
C.I.S Internet Specialist/Web Site Design	29	37	26
C.I.S. Networking Specialist	31	39	29
Cosmetology	145	176	142
Criminal Justice Technology	137	182	124
Early Childhood Care/Education	98	105	84
*(Electrical Systems Technology) (formerly Electrical Construction and Maintenance)	93	118	78
Electronics Fundamentals	3	1	0
Electronics Technology	40	41	23
EMS Professions			24
Fish & Wildlife Management (formerly Game and Fish Preserve Management)	20	32	14
Forestry Technology	18	16	11
Marketing	20	26	23
Medical Assisting	191	173	120
Paramedicine (formerly Paramedic Technology)	17	17	12
Pharmacy Technology	51	65	57
Practical Nursing	103	99	94

SECTION III: PROGRAM ENROLLMENT

Radiologic Technology (no longer offer diploma)	23	17	23
Surgical Technology	56	64	32
Welding and Joining Technology	81	92	88
Technical Certificates of Credit (TCC)	FY10	FY11	FY12
Administrative Support Assistant	1	1	0
Advance Emergency Medical Technical (AEMT)			
Advanced Shielded Metal Arc Welder (formerly Overhead Shielded Metal Arc Welder)	5	8	0
Air Conditioning Technician Assistant	4	0	0
Auto Electrical/Electronic Systems Technician			
Automotive Chassis Technician Specialist			
Automotive Climate Control Technician			
Automotive Engine Performance Technician			
Automotive Engine Repair Technician			
Automotive Transmission/Transaxle Tech Specialist			
Basic Shielded Metal Arc Welder (formerly Flat Shielded Metal Arc Welder)	29	14	14
Child Development Associate (CDA) Preparation (formerly Child Development Associate I)	8	18	4
Cisco Network Specialist	7	4	0
Commercial Truck Driving	47	65	65
Commercial Wiring			
CompTIA A+ Certified Preparation	3	2	1
Early Childhood Care & Education Basics (formerly Child Care Assisting)	3	7	0
Electrical Contracting Technician			
Electrical Systems Assistant	1	3	0
Emergency Medical Technician (EMT) (formerly Intermediate)	31	30	0
Flux Cored ARC Welder	1	4	2
Forest Technician Assistant			
Gas Metal Arc Welder Fabricator	19	19	3
Gas Tungsten Arc Welder	6	4	1
Health Care Assistant	518	633	557
Health Care Science	111	210	247
Help Desk Specialist (formerly Help Desk Assistant)	1	7	0
Human Resource Management Specialist	4	2	0
Internet Specialist Web Site Developer (formerly Internet Specialist Web Site Designer)	2	0	0
Management and Leadership Specialist	1	0	0
Medical Administrative Technician	72	113	51
Medical Front Office Assistant	5	3	1
Microsoft Excel Application Professional			
Microsoft Network Administrator	3	0	0
Microsoft Office Application Professional	2	2	2
Microsoft Word Application Professional			
Nurse Aide (formerly Certified Nurse Aide)	251	316	110
Payroll Accounting Specialist	1	2	0
Residential Wiring Technician	0	1	0
Shampoo Technician	12	12	0

SECTION III: PROGRAM ENROLLMENT

Supervisor/Management Specialist	1	1	0
Technical Management Specialist (formerly Visual Technical Communication)	13	18	0
Wildlife Management Assistant	20	18	17
Institutionally Accepted	13	13	76
Special Admit	7	13	7
Transient	23	32	12
TOTAL	3184	3728	2776

Source: TCSG Data Center Rpt #DC180

* FY10 numbers are only listed for Fall 09, Wnt 10, and Spr 10 - Sum 09 not included due to Banner box differences

Unduplicated numbers do not equal the sum.

SECTION IV

PROGRAM LICENSURE

SECTION IV: PROGRAM LICENSURE

Program Licensure Pass Rates (Cumulative)

	2009-10	2010-11	2011-12
Program	FY10	FY11	FY12
Certified Nurse Aide	Not Available	Written 94% Skills 84%	Available 4/13
Clinical Laboratory Technology	100%	100%	100%
Commercial Truck Driving	100%	100%	100%
Cosmetology	100%	100%	Written 95% Skills 100%
Dental Hygiene	100%	100%	100%
** Emergency Medical Technician	88%	87.5%	100%
** Paramedic Technology	100%	100%	100%
Pharmacy Technology	100%	100%	66%
Practical Nursing	94%	92.3%	100%
Radiologic Technology	100%	100%	100%

Source: Director of Allied Health Accreditation

*** Students are allowed a maximum of six attempts to complete all sections of the exam; therefore, they are not counted as failing until all attempts have been exhausted. Also, students are reported during the time period in which the test is taken, not necessarily the graduating term.*

SECTION V
GRADUATES

SECTION V: GRADUATES

Awards Conferred By Program

	2009-10 FY10	2010-11 FY11	2011-2012 FY12
Green Text denotes Semester Conversion Title			
Associate Degrees			
Accounting	7	7	2
Business Administrative Technology	4	2	3
Clinical Laboratory Technology	4	6	4
Computer Support Specialist	3	3	0
Criminal Justice Technology	7	4	5
Dental Hygiene	7	5	3
Early Childhood Care/Education	2	4	1
Electronics Technology	3	5	9
Forest Technology	2	1	3
Game and Fish Preserve Management	1	1	2
Internet Specialist - Web Site Design	0	2	0
Business Management	4	3	6
Marketing Management	1	0	0
Networking Specialist	7	3	1
Diplomas			
Accounting	5	9	3
Air Conditioning Technology	7	8	7
Business Administrative Technology	27	23	10
Business Office Technology	1	0	0
Computer Support Specialist	8	5	0
Cosmetology	35	37	23
Criminal Justice Technology	10	27	22
Early Childhood Care/Education	8	8	4
Electrical Systems Technology	9	19	4
Electronics Fundamentals	0	1	0
Electronics Technology	2	6	0
Forest Technology	5	3	4
Industrial Electrical Technology	2	7	2
Internet Specialist - Web Site Design	1	0	0
Business Management	3	1	2
Marketing Management	1	3	0
Medical Assisting	24	35	21
Networking Specialist	3	1	0
Paramedicine	14	0	0
Pharmacy Technology	4	5	16
Practical Nursing	53	27	37
Radiologic Technology (No longer offering diploma)	10	6	6
Surgical Technology	9	9	5
Welding and Joining Technology	5	11	2
Technical Certificates of Credit (TCC)			
Administrative Support Assistant	25	22	9
Advanced Emergency Medical Technician			

SECTION V: GRADUATES

Air Conditioning Repair Specialist	1	1	0
Air Conditioning Technician Assistant	1	0	0
Basic Electrical Technician	1	0	0
CAD Operator Architectural	1	0	0
Certified Nurse Aide	103	84	38
Child Care Assisting (No longer offered)	7	11	9
Child Development Associate I (No longer offered)	2	11	1
Cisco Network Specialist	3	6	0
Commercial Truck Driving	51	45	48
Commercial Wiring	5	16	14
CompTIA A+ Certified Preparation	4	11	13
Computer Repair Technician	1	0	0
Early Childhood Program Administration	1	0	0
Electrical Contracting Technician	7	19	13
Electrical Systems Assistant	6	17	7
Emergency Medical Technician	10	8	8
Basic Shielded Metal Arc Welder	26	12	17
Flux Cored ARC Weld	1	5	7
Forest Technician Assistant	0	7	0
Gas Metal Arc Welder Fabricator	18	19	7
Gas Tungsten Arc Welder	10	8	5
General Office Assistant (No longer offered)	23	24	0
Healthcare Assistant	49	88	67
Healthcare Science	1	3	0
Help Desk Assistant (No longer offered)	2	5	6
Human Resource Management Specialist	3	3	3
Imaging Science Services Assistant	6	22	0
Internet Specialist Web Site Designer (No longer offered)	1	0	0
Internet Specialist Web Site Designer (No longer offered)	1	0	0
Law Enforcement Investigations (No longer offered)	40	19	0
Law Enforcement Technician (No longer offered)	7	37	47
Management and Leadership Specialist	0	5	3
Medical Administrative Technician	29	32	30
Medical Office Assistant (No longer offered)	6	11	3
Microsoft Excel Application User (No longer offered)	5	7	1
Microsoft Office Application Professional	15	12	1
Microsoft Word Application Professional	12	3	6
Network Administrator	0	1	0
Advanced Shielded Metal Arc Welder	4	11	5
Payroll Accounting Specialist	8	18	10
Residential Wiring Technician	6	17	16
Shampoo Technician	11	8	0
Supervisor/Management Specialist	1	7	4
Wildlife Management Assistant	4	19	9
TOTAL	842	951	614

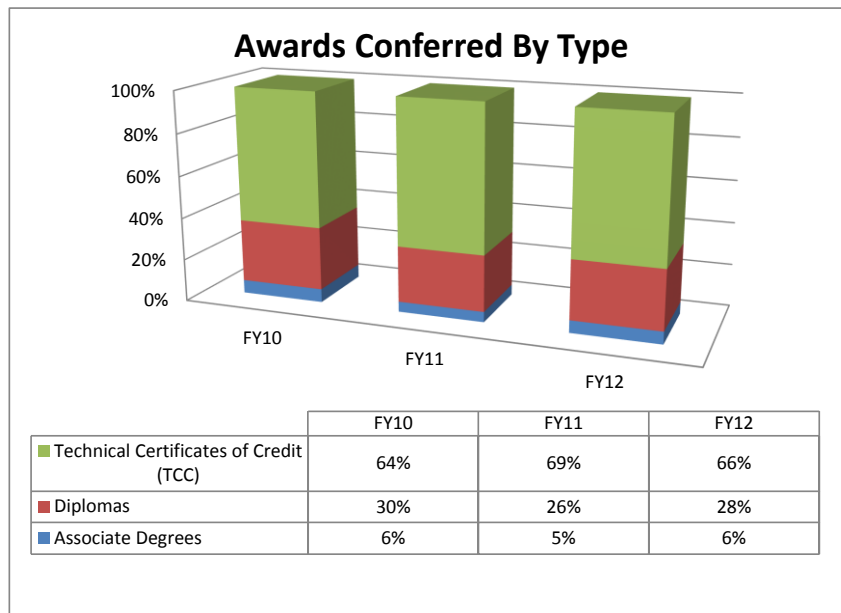
Source: TCSG Data Center Rpt #DC109

SECTION V: GRADUATES

Awards Conferred By Type

	2009-10	2010-11	2011-12
	FY10	FY11	FY12
Associate Degrees	53	46	39
Diplomas	251	251	186
Technical Certificates of Credit (TCC)	538	654	442
TOTAL	842	951	667

Source: TCSG Data Center Rpt #DC109



SECTION V: GRADUATES

Unduplicated Graduates & Total Placement Rates

	2009-10	2010-11	2011-12
Employment Status	FY10	FY11	FY12
Employed in Field	234	184	159
Military	2	3	2
Employed in Related Field	17	12	16
Employed in Unrelated Field	39	34	25
Employed in Field & Continued Education	51	92	23
Employed in Related Field & Continued Education	20	22	8
Employed in Unrelated Field & Continued Education	72	88	57
Continued Education	217	247	113
Not Employed	24	11	23
Not Available for Employment	14	10	5
Refused Employment	0	0	1
Status Unknown	8	16	99
Total Awards Conferred (duplicated)	698	698	531
Placed in Field Rate * (%)	82.0%	82.0%	58.4%
Total Placement Rate ** (%)	96.4%	96.4%	94.6%

Source: TCSG Data Center Report #DC108

* Placed in Field Rate = (Emp in Field + Military + Emp in Rel Field + Emp in Field & Cont Educ + Emp in Rel Field & Cont Educ)/Total Grads - (Emp Unrel Field & Cont Educ + Cont Ed + Not Avail)

** Total Placement Rate = (Emp in Field + Military + Emp in Rel Field + Emp Unrel Field + Emp in Field & Cont Educ + Emp Rel Field & Cont Educ + Emp Unrel Field & Cont Educ + Cont Educ)/(numerator + Not Emp)

SECTION V: GRADUATES

Total Placement Rates by PAS Program Area FY2012

Program (By Major, with Total for each PAS Program Area)	Total Placement Rate	Total Award	Empld In Field	Military	Empld in Rel Field	Empld in Unrel Field	Empld In Field & Cont Ed	Empld In Rel Field & Cont Ed	Empld in Unrel Field & Cont Ed	Cont Educ	Not Empld	Unavail for Emplmt	Refused Emplmt	Status Unknown
Accounting (AC12)	100.0%	3	0	0	0	0	0	0	0	3	0	0	0	0
Accounting (AC13)	50.0%	2	0	0	0	1	0	0	0	0	1	0	0	0
Payroll Accounting Specialist (PA61)	100.0%	10	0	0	0	0	1	1	3	5	0	0	0	0
Accounting	93.3%	15	0	0	0	1	1	1	3	8	1	0	0	0
Air Conditioning Technology (ACT2)	100.0%	4	1	0	0	1	1	0	0	1	0	0	0	0
Air Conditioning Technology (AI02)	100.0%	3	0	0	0	0	0	0	0	3	0	0	0	0
Air Conditioning Technology	100.0%	7	1	0	0	1	1	0	0	4	0	0	0	0
Administrative Support Assistant (5DC1)	100.0%	1	0	0	0	0	0	0	1	0	0	0	0	0
Administrative Support Assistant (AS21)	100.0%	8	1	0	2	0	1	1	0	2	0	0	0	1
Business Administrative Technology (BA22)	80.0%	5	0	0	0	1	0	1	0	2	1	0	0	0
Business Administrative Technology (BA23)	100.0%	3	0	0	0	0	0	0	1	2	0	0	0	0
Business Administrative Technology (BAT2)	100.0%	5	1	0	0	0	1	0	2	0	0	0	0	1
Business Administrative Technology (BAT3)	0.0%	1	0	0	0	0	0	0	0	0	1	0	0	0
Medical Administrative Technician (MA41)	100.0%	15	0	0	0	0	0	2	5	7	0	0	0	1
Medical Administrative Technician (MEA1)	100.0%	15	2	0	2	0	0	0	1	7	0	0	0	3
Medical Front Office Assistant (MF21)	100.0%	2	0	0	0	0	0	1	0	1	0	0	0	0
Medical Office Assistant (5DE1)	100.0%	1	0	0	0	0	1	0	0	0	0	0	0	0
Microsoft Excel Application Professional (ME51)	100.0%	2	1	0	0	0	0	0	0	0	0	0	0	1
Microsoft Excel Application User (5BB1)	100.0%	1	1	0	0	0	0	0	0	0	0	0	0	0
Microsoft Office Application Professional (MF41)	100.0%	1	0	0	0	0	0	0	0	1	0	0	0	0
Microsoft Word Application Professional (MWA1)	100.0%	6	2	0	3	0	0	0	0	0	0	0	0	1
Business and Office Technology	96.6%	66	8	0	7	1	3	5	10	22	2	0	0	8
Commercial Truck Driving (CT61)	97.8%	47	37	1	0	4	1	0	1	0	1	0	0	2
Commercial Truck Driving (TU01)	100.0%	1	1	0	0	0	0	0	0	0	0	0	0	0
Commercial Truck Driving	97.8%	48	38	1	0	4	1	0	1	0	1	0	0	2
CompTIA A+ Certified Preparation (CA61)	100.0%	13	0	0	0	0	0	1	2	9	0	0	0	1
Help Desk Specialist (HD41)	100.0%	6	0	0	0	0	0	1	2	2	0	0	0	1
Networking Specialist (NS13)	100.0%	1	0	0	0	0	0	0	1	0	0	0	0	0
Computer Information Systems	100.0%	20	0	0	0	0	0	2	5	11	0	0	0	2
Cosmetology (CO12)	85.7%	9	3	0	0	0	1	0	0	2	1	2	0	0
Cosmetology (CS02)	91.7%	14	5	0	0	1	2	0	1	2	1	1	0	1
Cosmetology	89.5%	23	8	0	0	1	3	0	1	4	2	3	0	1

SECTION V: GRADUATES

Criminal Justice Technology (CJ02)	100.0%	7	1	0	0	2	1	0	2	1	0	0	0	0
Criminal Justice Technology (CJT2)	84.6%	15	1	0	0	1	1	0	4	4	2	0	0	2
Criminal Justice Technology (CJT3)	100.0%	6	1	0	0	1	0	0	0	1	0	0	0	3
Introduction to Criminal Justice (IT51)	80.0%	17	3	0	0	0	0	0	1	4	2	0	0	7
Law Enforcement Technician (LEF1)	91.4%	47	0	2	0	6	2	0	4	18	3	0	0	12
Criminal Justice	89.7%	92	6	2	0	10	4	0	11	28	7	0	0	24
Dental Hygiene (DH13)	100.0%	3	2	0	0	0	0	0	0	0	0	1	0	0
Dental Hygiene	100.0%	3	2	0	0	0	0	0	0	0	0	1	0	0
CDA Preparation TCC (CE71)	100.0%	1	1	0	0	0	0	0	0	0	0	0	0	0
Early Childhood Care and Education Basics (EC31)	100.0%	9	2	0	0	0	0	0	2	5	0	0	0	0
Early Childhood Care/Education (ECC2)	100.0%	4	3	0	0	0	1	0	0	0	0	0	0	0
Early Childhood Care/Education (OO03)	100.0%	1	0	0	0	0	0	0	1	0	0	0	0	0
Early Childhood Care and Education	100.0%	15	6	0	0	0	1	0	3	5	0	0	0	0
Commercial Wiring (CW31)	90.9%	13	1	0	2	1	0	0	1	5	1	0	0	2
Commercial Wiring (CWO1)	100.0%	1	0	0	0	0	0	0	0	1	0	0	0	0
Electrical Construction and Maintenance (WO02)	100.0%	4	1	0	0	0	0	0	0	3	0	0	0	0
Electrical Contracting Technician (ECL1)	90.0%	12	0	0	2	1	0	0	0	6	1	0	0	2
Electrical Contracting Technician (ELN1)	100.0%	1	0	0	0	0	0	0	1	0	0	0	0	0
Electrical Systems Assistant (ESA1)	80.0%	7	1	0	1	1	0	0	0	1	1	0	0	2
Electrical Systems Technology (ES12)	77.8%	10	0	0	2	1	0	0	3	1	2	0	0	1
Industrial Electrical Technology (IEA2)	100.0%	2	1	0	0	0	0	0	0	1	0	0	0	0
Residential Wiring Technician (RW61)	92.9%	16	1	0	2	2	0	0	2	6	1	0	0	2
Electrical Construction and Maintenance	89.5%	66	5	0	9	6	0	0	7	24	6	0	0	9
Electronics Technology (EFA3)	50.0%	2	0	0	0	0	1	0	0	0	1	0	0	0
Electronics Technology (ET13)	100.0%	7	1	0	0	1	0	0	3	2	0	0	0	0
Electronics and Telecommunications	88.9%	9	1	0	0	1	1	0	3	2	1	0	0	0
Fish and Wildlife Management (GAF2)	50.0%	2	0	0	0	0	0	0	1	0	1	0	0	0
Forest Technology (FO02)	100.0%	2	0	0	0	1	0	0	1	0	0	0	0	0
Forest Technology (FT12)	100.0%	2	1	0	0	0	0	0	0	0	0	0	1	0
Forest Technology (FT13)	66.7%	3	0	0	1	0	0	0	1	0	1	0	0	0
Game and Fish Preserve Management (GFP2)	50.0%	2	0	0	0	0	0	0	0	1	1	0	0	0
Game and Fish Preserve Management (GFP3)	50.0%	2	0	0	0	0	0	0	0	1	1	0	0	0
Wildlife Management Assistant (WP11)	N/A	8	0	0	0	0	0	0	0	0	0	0	0	8
Wildlife Preserve Assistant (WPA1)	0.0%	1	0	0	0	0	0	0	0	0	1	0	0	0
Forestry Technology	61.5%	22	1	0	1	1	0	0	3	2	5	0	1	8
Health Care Assistant (HA21)	97.1%	37	11	0	1	2	1	3	6	9	1	0	0	3
Healthcare Assistant (5CJ1)	96.6%	30	3	0	1	1	4	1	9	9	1	0	0	1
Health Care Assistant	96.8%	67	14	0	2	3	5	4	15	18	2	0	0	4
Business Management (MD12)	100.0%	2	0	0	1	1	0	0	0	0	0	0	0	0
Business Management (MD13)	100.0%	6	1	0	0	0	2	0	1	1	0	0	0	1
Human Resource Management Specialist (5BZ1)	100.0%	1	0	0	0	0	0	0	0	1	0	0	0	0
Human Resource Management Specialist (HRM1)	100.0%	2	1	0	0	0	0	0	1	0	0	0	0	0
Management and Leadership Specialist (5AL1)	100.0%	1	0	0	0	0	0	0	0	1	0	0	0	0

SECTION V: GRADUATES

Management and Leadership Specialist (MAL1)	100.0%	2	1	0	0	0	0	0	1	0	0	0	0	0
Supervisor/Management Specialist (5AZ1)	100.0%	2	0	0	0	1	0	0	0	1	0	0	0	0
Supervisor/Management Specialist (SS31)	100.0%	2	1	0	0	0	0	0	1	0	0	0	0	0
Technical Management Specialist (TMS1)	100.0%	4	1	0	0	0	1	0	1	1	0	0	0	0
Management-Supervisory Development	100.0%	22	5	0	1	2	3	0	5	5	0	0	0	1
Technical Management Specialist (5CA1)	N/A	1	0	0	0	0	0	0	0	0	0	0	0	1
Marketing Management	N/A	1	0	0	0	0	0	0	0	0	0	0	0	1
Medical Assisting (MA02)	100.0%	5	4	0	1	0	0	0	0	0	0	0	0	0
Medical Assisting (MA22)	87.5%	16	9	0	1	0	0	0	2	2	2	0	0	0
Medical Assisting	90.5%	21	13	0	2	0	0	0	2	2	2	0	0	0
Clinical Laboratory Technology (CLT3)	66.7%	3	1	0	0	1	0	0	0	0	1	0	0	0
Clinical Laboratory Technology (ML03)	100.0%	1	1	0	0	0	0	0	0	0	0	0	0	0
Medical Laboratory Technology	75.0%	4	2	0	0	1	0	0	0	0	1	0	0	0
Advanced Emergency Medical Technician (AEMT) (EMH1)	100.0%	9	3	0	0	0	1	0	0	1	0	0	0	4
EMS Professions (EP12)	100.0%	2	1	0	0	0	1	0	0	0	0	0	0	0
Emergency Medical Technician (EMT) (EMJ1)	100.0%	8	3	0	0	0	0	0	0	1	0	0	0	4
Paramedic Technology	100.0%	19	7	0	0	0	2	0	0	2	0	0	0	8
Pharmacy Technology (PH02)	100.0%	3	0	0	0	0	2	0	1	0	0	0	0	0
Pharmacy Technology (PT22)	83.3%	13	8	0	0	1	0	0	0	1	2	0	0	1
Pharmacy Technology	86.7%	16	8	0	0	1	2	0	1	1	2	0	0	1
Certified Nurse Assisting (CNF1)	100.0%	8	5	0	0	0	0	0	0	3	0	0	0	0
Nurse Aide (CN21)	100.0%	30	7	0	1	2	0	0	3	4	0	0	0	13
Practical Nursing (PN04)	100.0%	8	5	0	0	0	2	0	0	1	0	0	0	0
Practical Nursing (PN12)	100.0%	13	8	0	0	1	0	0	0	0	0	1	0	3
Practical Nursing (PN14)	100.0%	16	12	0	0	0	0	0	0	3	0	0	0	1
Practical Nursing and Related Programs	100.0%	75	37	0	1	3	2	0	3	11	0	1	0	17
Imaging Science Services Assistant (ISA1)	100.0%	1	1	0	0	0	0	0	0	0	0	0	0	0
Radiologic Technology (RT04)	100.0%	6	5	0	1	0	0	0	0	0	0	0	0	0
Radiologic Technology	100.0%	7	6	0	1	0	0	0	0	0	0	0	0	0
Surgical Technology (ST02)	100.0%	5	5	0	0	0	0	0	0	0	0	0	0	0
Surgical Technology	100.0%	5	5	0	0	0	0	0	0	0	0	0	0	0
Advanced Shielded Metal Arc Welder (OSM1)	100.0%	5	0	0	0	1	0	0	1	2	0	0	0	1
Basic Shielded Metal Arc Welder (FS31)	100.0%	17	3	0	1	1	0	0	1	8	0	0	0	3
Flux Cored ARC Welder (FC61)	100.0%	7	0	0	0	1	0	0	2	2	0	0	0	2
Gas Metal Arc Welder (GM31)	100.0%	4	0	0	0	0	0	0	1	2	0	0	0	1
Gas Metal Arc Welder Fabricator (5BW1)	66.7%	3	0	0	0	0	0	0	2	0	1	0	0	0
Gas Tungsten Arc Welder (GTA1)	100.0%	5	0	0	0	1	0	0	1	2	0	0	0	1
Welding and Joining Technology (WAJ2)	100.0%	1	0	0	0	0	0	0	1	0	0	0	0	0
Welding and Joining Technology (WJ02)	100.0%	1	1	0	0	0	0	0	0	0	0	0	0	0
Welding and Joining Technology	97.1%	43	4	0	1	4	0	0	9	16	1	0	0	8

Source: TCSG Data Center Report #DC112

SECTION VI

FINANCIAL AID

SECTION VI: FINANCIAL AID

Amount of Financial Aid Awards

	2009-10 (FY10)		2010-11 (FY11)		2011-12 (FY12)	
	Total Undupl. Recipients	Total Award Amount	Total Undupl. Recipients	Total Award Amount	Total Undupl. Recipients	Total Award Amount
State Aid						
HOPE Diploma Tuition	2647	\$2,800,909	2827	\$3,068,063	2,167	\$2,091,510.25
HOPE Diploma Fees	2647	\$269,972.40	2827	\$262,768	2,167	\$30,376.20
HOPE Diploma Books	2647	\$546,458	2827	\$539,203	2,167	\$50,411.74
Total Awards		\$3,617,339		\$3,870,034		\$2,172,298.19
HOPE Degree Tuition	132	\$125,560	98	\$152,910	98	\$97,005.82
HOPE Degree Fees	132	\$12,500	98	\$12,808	98	\$2,134
HOPE Degree Books	132	\$26,620	98	\$28,150	98	\$3,525
Total Awards		\$164,680		\$193,868		\$102,664.82
ACCEL Tuition	13	\$8,600	13	\$7,650	80	\$50,400
ACCEL Fees	13	\$2,150	13	\$920	80	\$9,630
ACCEL Books	13	\$1,150	13	\$1,700	80	\$12,575
Total Awards		\$11,900		\$10,270		\$72,605
GED Awards	80	\$40,000	79	\$38,000	79	\$32,000
GA LEAP Grant	81	\$7,663	42	\$8,158	0	0
Title IV Awards						
Federal PELL Grant	1793	\$4,132,714	2111	\$4,914,061	1,855	\$4,443,188.51
Federal FSEOG Grant	250	\$57,450	169	\$42,400	450	\$99,046
Federal Work-Study	53	\$93,135	39	\$94,225	47	\$104,601.88
Total Awards						\$4,646,836.39
Loans						
Subsidized Loans					765	\$1,897,031
Unsubsidized Loans					725	\$1,816,885
Total Loans						\$3,713,916
Total Awards for Year		\$8,124,881		\$9,171,016		\$10,740,320.40
Total Receiving Aid		* 2804		3,112		2440

Source: STC Director of Financial Aid

*Undup excluding Sum 09

SECTION VII

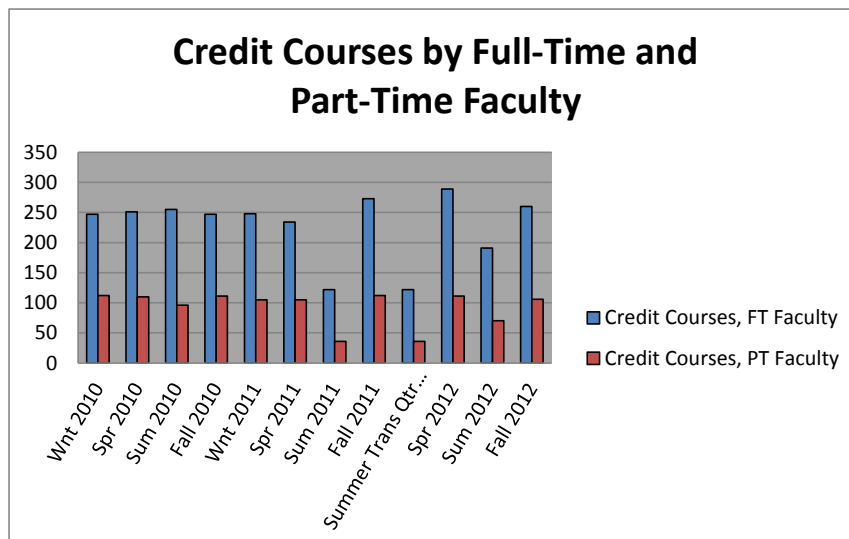
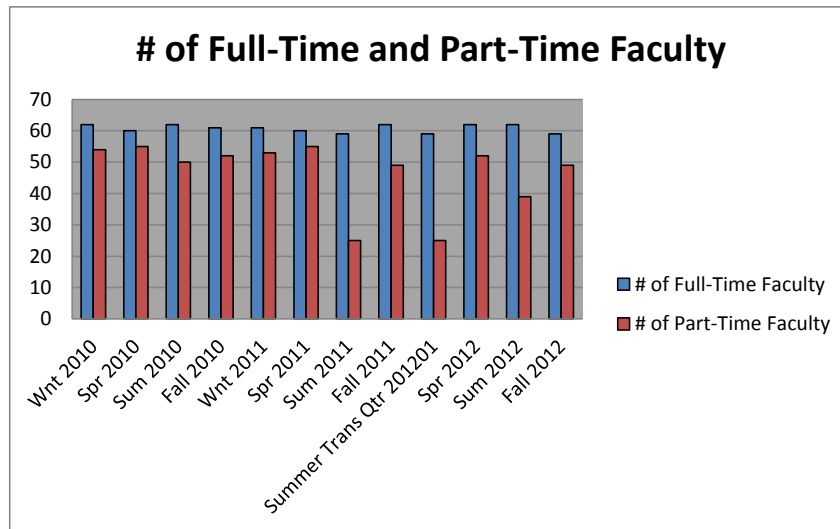
FACULTY AND STAFF

SECTION VII: FACULTY AND STAFF

Credit Courses Taught by Full-Time and Part-Time Faculty

	Wnt 2010	Spr 2010	Sum 2010	Fall 2010	Wnt 2011	Spr 2011	Sum 2011	Fall 2011	Sum Trans Qtr 201201	Spr 2012	Sum 2012	Fall 2012
# of Full-Time Faculty	62	60	62	61	61	60	59	62	59	62	62	59
# of Part-Time Faculty	54	55	50	52	53	55	25	49	25	52	39	49
	Wnt 2010	Spr 2010	Sum 2010	Fall 2010	Wnt 2011	Spr 2011	Sum 2011	Fall 2011	Sum Trans Qtr 201201	Spr 2012	Sum 2012	Fall 2012
Credit Courses, FT Faculty	247	251	255	247	248	234	122	273	122	289	191	260
Credit Courses, PT Faculty	112	110	96	111	105	105	36	112	36	111	70	106
Total # of Credit Courses	359	361	351	358	353	339	158	385	158	390	258	362
% Taught by FT Faculty	69%	70%	73%	69%	70%	69%	77%	71%	77%	74%	74%	72%
% Taught by PT Faculty	31%	30%	27%	31%	30%	31%	23%	29%	23%	28%	27%	29%

Source: SQL Rpt FacultyInfoForFactBook2.brw and ScheduleByInstructor



SECTION VII: FACULTY AND STAFF

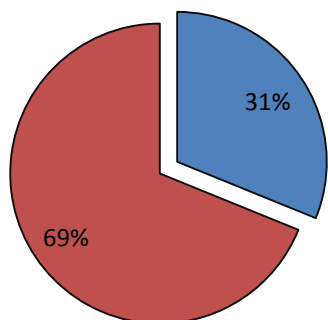
Faculty Demographics Fall 2012

		Full-Time	Part-Time	Total
Gender	Male	20	13	33
	Female	38	35	73
Ethnicity	Black	2	3	5
	White	54	46	100
	Other	1	0	1
Highest Earned Degree	Doctorate	0	0	0
	Specialist	0	1	1
	Masters	32	19	51
	Baccalaureate	11	9	20
	Associate	5	3	8
	Diploma	6	5	12
	Technical Certificate	0	1	1
	Work Experience	3	3	6
Age	20-29	1	8	9
	30-39	12	18	30
	40-49	26	9	35
	50-59	14	6	20
	60+	5	7	12

Source: SQL Rpt FacultyInfoForFactBook2.brw

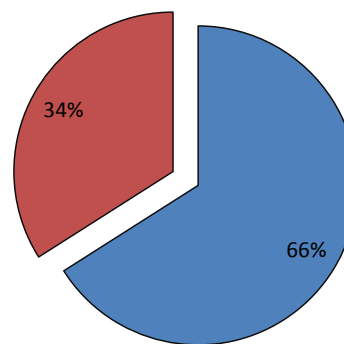
Fall 2012 - Male/Female

Male Female



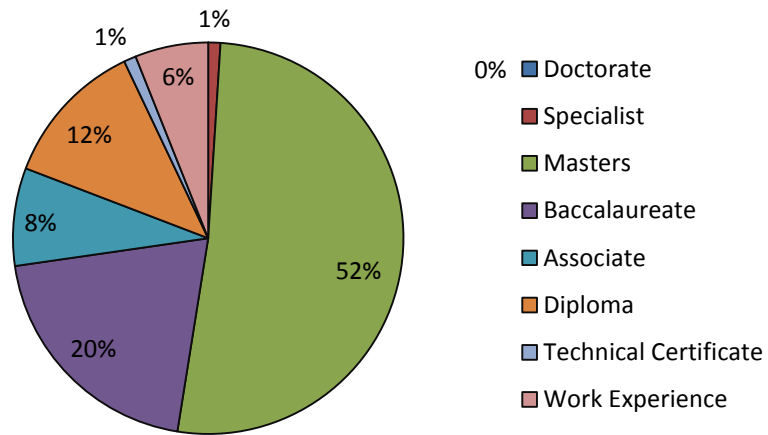
Fall 2012 - FT/PT

Full-Time Part-Time

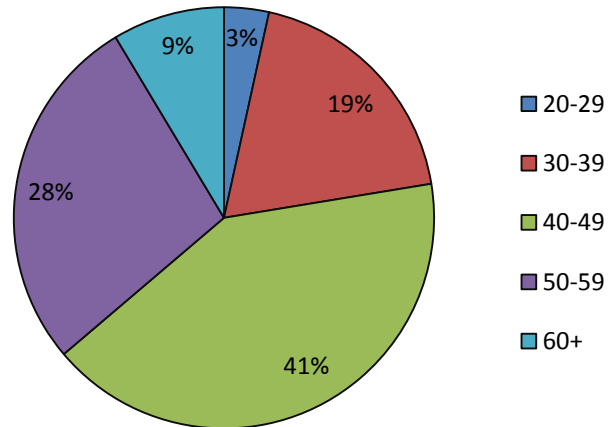


SECTION VII: FACULTY AND STAFF

Fall 2012 - Faculty Highest Earned Degree



Fall 2012 Full-Time Faculty Age



SECTION VIII

LIBRARY RESOURCES

SECTION VIII: LIBRARY RESOURCES

Services

Reference questions

Ask A Librarian Form Usage			
	FY 2010	FY 2011	FY2012
General Question	8	0	5
GALILEO	8	3	2
NetLibrary	6	13	2
Total	22	16	9
Reference Questions	80	91	448

Interlibrary Loans

ILL			
	FY 2010	FY 2011	FY2012
Borrowing	70	44	27
Lending	141	131	132
Total	211	175	159

Bibliographic Instruction Summary

FY11

Term	# of Sessions	Attendees
Summer	26	433
Fall	33	823
Winter	17	329
Spring	25	553
Total	101	2138

FY 12

Term	# of Sessions	Attendees
Summer	9	189
Fall	20	451
Winter	18	432
Spring	5	92
Total	52	1,164

SECTION VIII: LIBRARY RESOURCES

Resources

Circulation

Transaction Type	Number
Check Outs	1,634
In-House Use	0
Renewals	412
Total	2,046

GALILEO

GALILEO usage, with comparison to four other TCSG colleges

School	Enrollment Fall Semester 2012	Keyword	Full Text	Citations	Logins	Links Chosen	Total
North Georgia	2,076	40,237	30,360	86,687	2,819	2,876	162,979
South Georgia	1,796	41,778	33,766	126,242	2,352	1,318	205,456
Southeastern	1,377	61,446	42,294	174,346	4,403	4,345	286,834
Southwest Georgia	1,258	37,292	31,756	109,740	3,025	1,745	183,558
Altamaha	1,139	67,163	70,578	171,740	3,560	3,529	316,570

Databases made available through GALILEO, paid for locally.

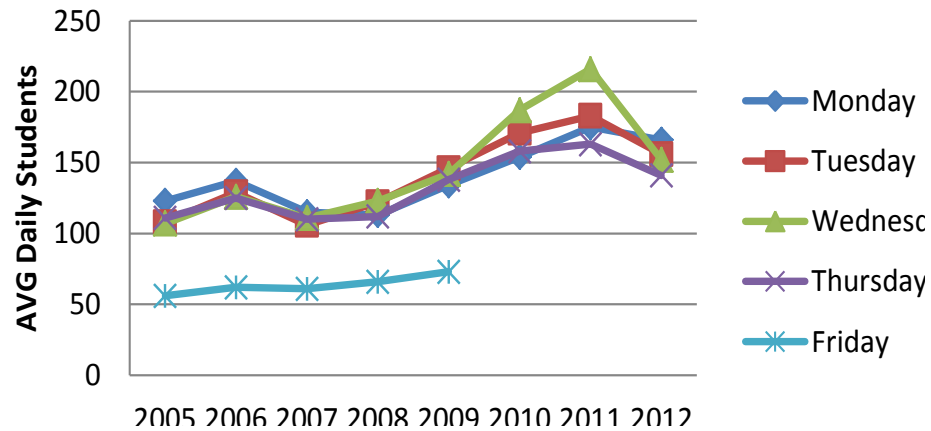
- Cumulative Index to Nursing and Allied Health Literature (CINAHL)
- Encyclopedia Britannica
- Gale Encyclopedia of Alternative Medicine, 2nd ed.
- Gale Encyclopedia of Espionage, Intelligence and Security
- Gale Encyclopedia of Surgery, a Guide for Caregivers and Patients
- Literature Resource Center (Gale)
- Magill's Medical Guide

SECTION VIII: LIBRARY RESOURCES

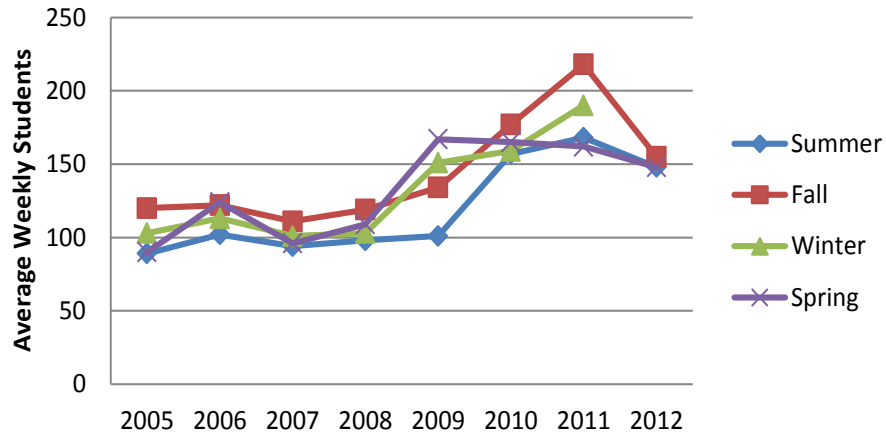
Access

8 Year Comparison, Library Attendance, Vidalia

FY05 - FY12 Comparison by Day



FY05 - FY12 Comparison by Quarter



SECTION IX

**CONTINUING EDUCATION
and
ECONOMIC DEVELOPMENT**

SECTION IX: CONTINUING EDUCATION and ECONOMIC DEVELOPMENT**Adult Education**

	FY 2010	FY 2011	FY 2012
Students Served	1,914	2,019	1809
Contact Hours	132,669	119,925	101,488
Level Completions	653	636	777
GEDs Awarded	519	546	589

Adult Education Enrollment by County

County	FY 2010	FY 2011	FY 2012
Candler	155	143	118
Emanuel	554	618	521
Jenkins	137	139	138
Johnson	104	104	127
Montgomery	71	42	40
Tattnall	228	219	195
Toombs	438	459	412
Treutlen	227	295	254
Total	1,914	2,019	1805

ESL Enrollment by County

County	FY 2010	FY 2011	FY 2012
Candler	8	4	0
Emanuel	0	5	0
Jenkins	0	0	0
Johnson	0	0	0
Montgomery	0	0	0
Tattnall	28	0	2
Toombs	19	4	2
Treutlen	0	0	0
Total	55	13	4

ESL Contact Hours by County

County	FY 2010	FY 2011	FY 2012
Candler	189	159	0
Emanuel	0	204	0
Jenkins	0	0	0
Johnson	0	0	0
Montgomery	0	0	0
Tattnall	1,057	0	187
Toombs	597	171	158
Treutlen	0	0	0
Total	1,843	534	345

Source: Ex. Dir. of Adult Education

SECTION IX: CONTINUING EDUCATION and ECONOMIC DEVELOPMENT

Economic Development Services Data

Enrollment (People Served)

Department	FY 2010	FY 2011	FY 2012
Continuing Ed	756	728	391
Conferencing	4,944	3,641	5,588
Community Med/Emergency Training	9,506	10,012	10,074
Contract Training	1,854	4,660	3,748
Total	17,060	19,041	19,801

Revenue (\$)

Department	FY 2010	FY 2011	FY 2012
Continuing Ed	26,333	42,353	23,421
Conferencing	41,794	17,937	34,537
Community Med/Emergency Training	94,832	81,549	154,277
Contract Training	106,944	135,300	118,775
Total	269,903	277,139	331,010

Source: VPEDP

SECTION IX: CONTINUING EDUCATION and ECONOMIC DEVELOPMENT

Quick Start Companies Served FY 12

Chicken of the Sea	US Pet
Vidalia Valley	US Energy
Nordson	

Contract Training Companies Served FY 12

Georgia Correctional Industries	Plant Hatch
Appling EMS	Surgery Technologies
Crider Poultry	Tattnall Chamber
Amicita Home Health	Dot Foods
Satilla Regional	Cardiology and Associates
Oxford Industries	Option Healthcare
Vidalia Valley	Chicken of the Sea
One Life Insurance	TWI Counseling
Tumi Luggage	Meredith Industries
Meadows Regional Hospital	Concerted Services
Local Entrepreneurs	Hazlehurst Distributors
Vidalia Healthcare	The Drug Store
Volunteers of America	Care Partners of Georgia
Lowe Electrical	Lighthouse Nursing
Savannah Luggage	US Energy
Johnson Roofing	Amacita Home Health
Herrington Homestead	Rotary Corporation
Husquavarna	Toddler Tech
Mayo Clinic	VNS
Georgia HiTech	Truax
STC Instructors	STC Medical Students

Small Business Assistance Services

Service	FY 2010	FY 2011	FY2012
Business Startup Kits Distributed	54	52	39
Small Business Contacts	85	72	65
Business Starts	16	18	14

Source: VPEDP

SECTION X
COLLEGE SCORECARD

SECTION X: COLLEGE SCORECARD

Southeastern Technical College College Performance Funding Measures & Benchmarks 2013 Projections

	Reporting Year 2011		Reporting Year 2012		2013
	Projected Results	Actual Results	Projected Results	Actual Results	Projected Results
Technical Education					
1. Retention Rate	65.0%	71.6% 285 / 398	69.0%	69.6% 266 / 382	
2. Graduation Rate	53.0%	54.2% 1,333 / 2,460	54.0%	57.3% 1,276 / 2,225	
3. Job Placement Rate	85.0%	Not Available	85.0%	Not available	
4. FTE	1,750	1,706	1,400	1,377	
5. High School Enrollment	250	255	250	228	
Adult Education					
1. NRS Enrollment ABE/ASE/ESL	1,850	1,866	1,900	1,660	
2. NRS Level Completions in ABE, ASE, and ESL	650	636	650	784	NA-tracked by level effective FY13
2a) ABE1 Beginning Literacy	New: Tracked by each Educational Functioning Level effective FY 2013		New: Tracked by each Educational Functioning Level effective FY 2013		NRS Goal: 40%
2b) ABE2 Beginning					NRS Goal: 39%
2c) ABE3 Low Intermediate					NRS Goal: 38%
2d) ABE4 High Intermediate					NRS Goal: 34%
2e) ASE1 Low					NRS Goal: 36%
2f) ESL1 Beginning Literacy					NRS Goal: 37%
2g) ESL2 Low Beginning					NRS Goal: 41%
2h) ESL3 High Beginning					NRS Goal: 43%
2i) ESL4 Low Intermediate					NRS Goal: 39%
2j) ESL5 High Intermediate					NRS Goal: 34%
2k) ESL6 Advanced					NRS Goal: 28%
3. Obtained a HS Diploma/GED	New measure effective FY13		New measure effective FY13		NRS Goal: 67%
4. Entered Postsecondary Ed	New measure effective FY13		New measure effective FY13		NRS Goal: 25%
5. Entered Employment	New measure effective FY13		New measure effective FY13		NRS Goal: 26%
Economic Development					
1. CCT: Companies Trained	55	54	55	80	
2. CCT: Trainee Contact Hours	38,000	47,223	38,000	38,889	
Foundation Financial Status					
1. Funds Raised	N/A		N/A		

TCSG Data Center Report # DC198 – 2/12/2013