



2013 FACT BOOK

YOUR BRIDGE TO THE FUTURE



Table of Contents

SECTION I GENERAL INFORMATION	1
SECTION II ENROLLMENT	15
SECTION III PROGRAM ENROLLMENT	25
SECTION IV PROGRAM LICENSURE	29
SECTION V GRADUATES.....	31
SECTION VI FINANCIAL AID	40
SECTION VII FACULTY AND STAFF	42
SECTION VIII LIBRARY RESOURCES	47
SECTION IX CONTINUING EDUCATION and ECONOMIC DEVELOPMENT	51
SECTION X COLLEGE SCORECARD	55

SECTION I

GENERAL INFORMATION

SECTION I: GENERAL INFORMATION

Introduction

The Institutional Effectiveness Division is pleased to present the **2013 Southeastern Technical College (STC) *Fact Book***.

This book is intended as a single, readily accessible, consistent source of information about Southeastern Technical College. It is a summary of institutional data compiled to capture the 2013fiscal/academic year.

The 2013 Fact Book cover was designed by Clarke Schwabe. “Your Bridge to the Future” is represented by a collage of skills training photos from programs that are available at STC and bridge the way to future successes and employments for students.

The Fact Book provides pertinent facts and figures valuable to administrators, faculty, students, and the public on an annual basis. To help in accomplishing this, we welcome your comments and suggestions for the Fact Book.

The 2013 Fact Book was compiled by:

Janene Betts
Administrative Assistant to the Provost and IE Data Analyst
jbetts@southeasterntech.edu

Support and resource information:

Vincent Jackson
Director of Planning and Research
vjackson@southeasterntech.edu

Gail Ware
Vice President for Institutional Effectiveness
gware@southeasterntech.edu

SECTION I: GENERAL INFORMATION

Mission Statement

Southeastern Technical College, a unit of the Technical College System of Georgia, provides an innovative, educational environment for student learning through traditional and distance education delivery methods focused on building a well-educated, globally competitive workforce for Southeastern Georgia.

The College fulfills its mission through:

- associate degree, diploma, and technical certificate of credit programs;
- adult education;
- continuing education; and
- customized training and services.

Vision

Southeastern Technical College will be recognized as an educational leader in Southeastern Georgia. The College will deliver quality, student-centered, and accessible postsecondary education and training. The College will empower students for success, cultivating innovative and economically thriving communities and enterprises.

Southeastern Technical College Values:

- Integrity, honesty, openness, mutual respect, and personal excellence.
- Continuous improvement.
- Making a difference in teaching and learning.
- A strong, visionary Administration.
- A qualified and committed Faculty and Staff.
- Community Partnerships and citizenship.
- Safe, secure, and attractive campuses and facilities.
- Time together for planning.
- Positive attitudes and teamwork.
- Accessible and affordable, quality programs and services.
- Professional Development.
- Communication.
- Fairness, equality, and diversity.
- Workforce development.
- Marketing our uniqueness for a competitive advantage.
- Technological advancement.

SECTION I: GENERAL INFORMATION

Service Delivery Area and Campus Locations



V&J Productions®

SECTION I: GENERAL INFORMATION

Southeastern Technical College serves the geographic area of Candler, Emanuel, Jenkins, Johnson, Montgomery, Tattnall, Toombs, and Treutlen counties, which are located in southeast Georgia. The college currently offers programs at the following twelve locations:

Southeastern Technical College (Main-Vidalia Campus) is located at 3001 East First Street in Vidalia, Georgia. This location is along U.S. Highway 280 and is approximately 2.5 miles from U.S. Highway 1.

- Building 1: Administration Building (1990) 91,386 sq. ft.
Houses offices of administrative and support staff, Industrial programs, General Education classes, COS, Bookstore, and Library
- Building 2: Gillis Building (2003) 45,211 sq. ft.
Houses Allied Health programs and Business programs
- Building 3: Health Sciences Annex (2007) 9,993 sq. ft.
Houses Dental Hygiene program and Associate of Science in Nursing (RN) program.
- Building 4: Automotive Technology Training Center and Southeastern Early College and Career Academy (2011) 34,023 sq. ft.
Houses Automotive Technology and Career Academy.

Southeastern Technical College: Swainsboro Campus is located at 346 Kite Road in Swainsboro, Georgia. This location is along GA Highway 57 and is approximately 2 miles from U.S. Highway 1 and 35 miles from the Vidalia Campus.

- Building 1: (1996) 19,541 sq. ft.
Houses Administrative offices, Student Affairs, Allied Health classrooms/labs (PN, MA & PHL)
- Building 2: (1963-1979) 39,593 Sq. ft.
Houses Academic Affairs offices, Business classrooms/labs (ACC BAT, CIS, General Education & CJ), Library Resource Center, Career Center, technical classrooms/labs & ECM)
- Building 3: (1979) 11,355 Sq. ft.
Houses COS, Student Center, Bookstore, Facilities, Security & Polycom
- Building 4: (1989) 4,298 Sq. ft.
Houses Child Care Center
- Building 5: (1955) 1,202 Sq. ft.
Houses Information Services/Technical Support
- Building 6: (2003) 25,422 Sq. ft.
Houses Technology Center, Economic Development offices, General Education classrooms, Technical Division classrooms/labs (Flex Lab, ELTR, FWMT, FOR, & WLD)

SECTION I: GENERAL INFORMATION

- Building 7: (1995) 2,808 Sq. ft.
Houses Maintenance/Storage
- Building 8: (1964) 10,154 Sq. ft.
Houses Classrooms and record storage (Scheduled for demolition 11-11-13)
- Building 9: (2003) 2,891 Sq. ft. Greenhouse (Scheduled for demolition 11-11-13)
- Building 10: (1950) 6,823 Sq. ft.
Houses maintenance and is a warehouse storage building

Southeastern Technical College shuttered its **Glennville Campus** located at 211 S. Tillman Street in Glennville, Georgia at the end of AY 12. The shuttered campus is located approximately one block from U.S. Highway 301. The distance to the Glennville Campus from the Vidalia Campus is 43.4 miles.

- Building 1: Tattnall Institute Building (1916 – major renovations completed in 2004)
12,010 Sq. ft.
(Leased to Tattnall County)
- Building 2: Allied Health Building (major renovations completed in 2004) 5,018 Sq. Ft.
(Leased to Tattnall County)
- Building 3: Tattnall Technology Center (2004) 7,995 Sq. ft.
Houses Adult Education and Continuing Education classes (Open)
- Building 4: Cosmetology Building (2011) 6,135 Sq. ft.
Houses classrooms, offices, and Cosmetology Lab (Shuttered)

The **Economic Development Center** houses continuing education, business and industry training, and adult education programs. (2002) with 27,230 Sq. ft. The regional operations center for the Technical College System of Georgia's Quick Start program is no longer housed at the EDC. The space has been repurposed for credit courses. The center is located at 100-A Brinson Road in Vidalia. The Economic Development Center is located approximately one block off of U.S. Highway 280, and is 3.7 miles from Southeastern Tech's Vidalia Campus.

The **Johnson County Extension Center** is located at 21 Cedar Creek Drive in Wrightsville, Georgia. This location is approximately 1 mile southeast of downtown Wrightsville off of GA Highway 57 and is 25 miles from the Swainsboro Campus.(2007) 4,179 Sq. ft. It serves as an extension location for selected credit courses. Extension Campus Houses Credit Classrooms/labs, offices, and Continuing Education classes

The **Candler County Center** is located at 25 West Daniel Street in Metter, Georgia 25 miles from the Swainsboro Campus. (2001) with 6,100 Sq. ft. This center provides adult education classes and services to residents of Candler County. It also serves as an extension location for selected credit courses.

SECTION I: GENERAL INFORMATION

The **Jenkins County Center** is located at 210 Hendrix Street in Millen, Georgia 35 miles from the Swainsboro Campus (1995) with 3,500 Sq. ft. This center provides adult education classes and services to residents of Jenkins County. It also serves as an extension location for selected credit courses.

The **Johnson County Center** is located at 37 Georgia Avenue in Wrightsville, Georgia, 30 miles from the Swainsboro Campus (1999) with 2,400 Sq. ft. This center provides adult education classes and services to residents of Johnson County.

The **Tattnall-Reidsville Adult Learning Center** is located at 123 Tattnall Street in Reidsville, just off of U.S. Highway 280 (2001) with 4,591 Sq. ft. This center provides adult literacy classes and services to residents of northern Tattnall County. The building is owned and maintained by Tattnall County for Southeastern Tech's use. The center is located approximately 17 miles from the college's Vidalia Campus.

The **Montgomery County Adult Literacy Center** is located at 251 S. Fulton Street in Mt. Vernon. This center provides adult literacy services to residents of Montgomery County. This facility is owned and maintained by Montgomery County for Southeastern Tech's use in 2002 with 4,176 Sq. ft. The center is conveniently located just off of U.S. Highway 280 and is approximately 14.5 miles from the college's Vidalia Campus.

The **Commercial Truck Driving Facility** is located on Harris Industrial Boulevard in Vidalia in the Toombs Industrial Park (2003) with 2,648 Sq. ft. The property is located a short 1.6 miles from Southeastern Technical College's Vidalia Campus. It houses the Commercial Truck Driving program.

SECTION I: GENERAL INFORMATION

Institutional Goals

The goals that will help us realize our vision and mission are to:

Guarantee student access and the opportunity for success at all levels.

Objectives:

1. Assure the quality of instruction and support services to enhance student learning.
2. Expand adult education opportunities to improve educational advancement.
3. Expand dual enrollment opportunities and other partnerships with local secondary school systems.
4. Expand options and collaborations with business and industry, other post-secondary institutions, and other state agencies.

Build the local workforce for economic vitality.

Objectives:

1. Provide excellence in economic development and community services to support attracting business /industry and creating/ expanding/ retaining jobs.
2. Support certified Work Ready and Entrepreneur Friendly programs.
3. Expand credit program offerings to match workforce needs/strategic industries.

Improve the visibility, recognized value, and support of Technical Education, Adult Education, and Workforce Training.

Objectives:

1. Maintain comprehensive marketing plan.
2. Maintain SACS/COC and appropriate program accreditations.
3. Build private financial support and increase alternative funding sources.

Enhance the College's organizational development in terms of educational delivery, facilities and equipment, and internal workforce.

Objectives:

1. Maximize efficiency and effectiveness in the delivery of quality programs and services.
2. Implement a comprehensive facilities and capital outlay plan.
3. Develop and implement plans to assure College safety, security, and business continuity.
4. Maintain innovative, cutting-edge technology and equipment to improve College operations and student learning.
5. Expand staff development and leadership training for personnel.
6. Improve faculty and staff recruitment and retention and increase the full-time faculty percentage.

SECTION I: GENERAL INFORMATION

History

During the 1987 session, the Georgia Legislature appropriated \$45,000 for the preliminary plans for a technical institute to be located in Southeast Georgia. During the 1988 session, an additional appropriation of \$5,410,000 was approved for the construction of the new institute. Other state funds totaling \$445,000 were added to the project. Additionally, the citizens of Toombs County, through a local option sales tax, contributed \$1,689,000 to the project for the construction of a 776-seat auditorium. The total funds invested in the project amounted to \$7,553,000.

Construction of Southeastern Technical Institute began in 1988. A local Board of Directors was sworn into office in July 1989. By November 1989, the Southeastern Technical Institute Foundation was incorporated. Although the facilities were still under construction, the first diploma program, Practical Nursing began in January 1990. Upon completion of construction in 1990, a dedication ceremony was held. Governor Joe Frank Harris delivered the dedicatory address.

October 1, 1990, marked the official opening of the new facility. Forty-six students enrolled in four diploma programs: Practical Nursing, Information and Office Technology, Accounting, and Cosmetology. An additional 32 students enrolled in Developmental Studies. In March 1991, nine Practical Nursing students graduated in Southeastern Tech's first commencement exercise. The institute remained constant in adding more programs to respond to the needs of the community.

In 1992, Southeastern Tech established a campus in Glennville. After having leased facilities in Glennville for a number of years, on June 14, 1994 the City of Glennville gave Southeastern Tech three buildings and the land the campus buildings are situated. Also of significance to the Glennville Campus was the award of a Community Block Development Grant to Tattnall County for the construction of a Technology Center. This facility is located on property adjacent to the Glennville campus and is utilized by Southeastern Technical College for adult literacy training, continuing education, and business and industry training.

On February 5, 1998, the State Board of the Technical College System of Georgia authorized the purchase of a building located in Vidalia to be used as the College's Economic Development Center. The building had been leased by Southeastern Technical College since 1994. Renovation of this facility was completed in October 2002. The facility also houses regional operations for the Technical College System of Georgia's Quick Start program, an organization which serves the training needs of new and expanding industries.

In 2000, the school had a 43% increase in enrollment over 1999 and a 257% increase in the continuing education department in two years. Beyond growth was the tremendous positive effect the institution has experienced through the development of a more technically skilled workforce.

On December 7, 2000, Southeastern Technical Institute officially changed its name to Southeastern Technical College. The name change was a facet of Governor Roy Barnes' Education Reform Bill. This also allowed STC to offer associate degrees and receive formula-funding based on enrollment from the State of Georgia.

SECTION I: GENERAL INFORMATION

Southeastern Technical College celebrated ten years of service to Toombs, Tattnall, and Montgomery counties while promoting the theme, "A Decade of Difference." Southeastern Technical College continued to increase enrollment and add new programs.

In 2001, the Toombs County Development Authority conveyed 15.92 acres of land in the Toombs County Industrial Park to Southeastern Technical College for the purpose of establishing a Commercial Truck Driving facility. The Commercial Truck Driving Facility was completed in June 2003.

A landmark occasion for adult literacy efforts occurred in September 2001 with the opening of the Reidsville-Tattnall County Adult Literacy Center. The facility, funded by a Community Development Block Grant (CDBG), provided a permanent home for adult literacy programs and services in Reidsville.

Construction began in November 2001 on the Medical Technology Building on the main campus. Due to unprecedented enrollment growth, funds were appropriated to construct an addition to this project.

In FY 2001, Southeastern Technical College served over 1900 students in credit programs alone. The College grew to more than 50 programs in business, health, technical and industrial fields. Online classes became available at Southeastern Technical College through the Georgia Virtual Technical Connection. Barriers of time and distance diminished as obstacles that could hinder students from receiving the education they desire and deserve.

Following the success in establishing a permanent home for adult literacy programs and services in Reidsville was the establishment of the Montgomery County Adult Literacy Center in Mt. Vernon. The construction of this facility was also established through a CDGB to Montgomery County. The Center opened in June 2002.

During FY 2002, the College had a major impact on the community as literacy classes were now able to be offered at four different sites. As previously stated, construction began on the regional medical technology building; construction started on the Glennville Campus renovations; STC added additional parking on the Vidalia campus, as well as completed the final phases for the new Economic Development Center in Vidalia.

Southeastern Technical College has experienced phenomenal growth during its relatively brief existence. Space constraints on the Vidalia campus were alleviated in January 2004 with the official opening of the Medical Technology Building.

The hallmark of the success of Southeastern Technical College is the strong local support from its service area. This modern facility stands as a finely sculptured monument to the economic growth and development of the entire region. Adult students, regardless of sex, race, age, color, religion, national origin, marital status, academic or economic disadvantage or disability may capitalize on the enhanced opportunities offered by technical education. Technical education has clearly become a desirable, attractive alternative for education for the citizens of Georgia.

In January 2008, Commissioner Ron Jackson of the Technical College System of Georgia charged a taskforce to measure the feasibility of merging two technical colleges as the first of

SECTION I: GENERAL INFORMATION

several mergers across the state. In August 2008, a plan to merge the first two colleges was approved. At its September 2008 meeting, the State Board of Technical and Adult Education determined that merger strategies were necessary throughout the state and gave approval to proceed with the mergers proposed by the Technical College System of Georgia.

Commissioner Jackson met with the Local Boards of Southeastern Technical College and Swainsboro Technical College to discuss their role during the merger process. Dr. Ray Perren, Assistant Commissioner of the TCSG, met with the college presidents to prioritize and outline the tasks before them. Southeastern and Swainsboro formed a combined Steering Committee of senior staff from both colleges to lead and manage the merger process.

Southeastern Technical College and Swainsboro Technical College had a close working relationship since the opening of Southeastern Tech in 1990. In fact, Southeastern Tech was formed from Swainsboro Tech's service delivery area. The colleges were located only 32 miles apart; therefore, they often had transient students from one another and shared many of the same community supporters, business partnerships and resources. They provided more than 15 similar programs, with many of the programs using the same books and instructional materials. The merger benefits the communities served by creating a strong, single presence with increased visibility, and a unified mission. The merged college better utilizes limited resources to be more responsive to the needs of business and industry. More efficient resource utilization allows current programs to be expanded and frees up resources to add new programs as needed in our continually changing economy. As one educational entity in the communities, the merged college better serves the communities with stronger partnerships, decreased competition for resources and fundraising, elimination of duplication, and more visibility as a stronger institution. A merged institution further enhances the programs and services provided to all communities served and broadens the opportunities in many areas.

On July 1, 2009, Swainsboro Technical College and Southeastern Technical College officially merged to form the new Southeastern Technical College, which serves Candler, Emanuel, Jenkins, Johnson, Montgomery, Tattnall, Toombs, and Treutlen counties. The Board of Trustees of the Commission on Colleges continued accreditation following review of the consolidation/merger. Southeastern Technical College was initially accredited by the Southern Association of Colleges and Schools Commission on Colleges (SACSCOC) in 2009. Prior to this date, both former colleges were accredited by SACSCOC from 2008 to 2009.

In FY/AY 2012, Southeastern Technical College, a unit of the Technical College System of Georgia, successfully converted from the Quarter System to the Semester System.

In June 2013, Southeastern Technical College's accreditation was reaffirmed by the Southern Association of Colleges and Schools Commission on Colleges (SACSCOC) with the next reaffirmation of accreditation review scheduled for 2023.

SECTION I: GENERAL INFORMATION

Accreditation/Certification/Licensure/Approval

Southeastern Technical College is a unit of the Technical College System of Georgia.
<http://www.tcsge.edu/>

- Southeastern Technical College is accredited by the Commission on Colleges of the Southern Association of Colleges and Schools to award Associate Degrees. Contact the Commission on Colleges at 1866 Southern Lane, Decatur, GA 30033-4097 or call (404) 679-4500 for questions about the accreditation of Southeastern Technical College.
www.sacscoc.org. *Inquiries such as admission requirements, financial aid, educational programs, etc., should be addressed directly to Southeastern Technical College and not to the Commission's office. Please direct all questions to: Southeastern Technical College, 3001 E. First Street, Vidalia, GA 30474, 912.538.3100, Fax 912-538-3156.*
- The Practical Nursing program is approved by the Board of Examiners of Licensed Practical Nurses for the State of Georgia, 237 Coliseum Drive, Macon, GA 31217-3858, (478) 207-2440. <http://sos.georgia.gov/plb/lpn/>
- The Nurse Aide program is approved by the Georgia Medical Care Foundation, 1455 Lincoln Parkway East, Suite 750, Atlanta, Georgia 30346-2200. Phone number is 678-527-3010 or 800-414-4358.
- The Medical Assisting Diploma Program is accredited by the [Commission on Accreditation of Allied Health Education Programs \(www.caahep.org\)](http://www.caahep.org) upon the recommendation of the Medical Assisting Education Review Board (MAERB). Commission on Accreditation of Allied Health Education Programs, 1361 Park Street, Clearwater, FL 33756. 727/210-2350
- The Early Childhood Care and Education Paraprofessional Training program is approved by the Georgia Professional Standards Commission, Two Peachtree Street, Suite 6000, Atlanta, GA 30303, (800) 869-7775. <http://www.gapsc.com/>
- The Child Care Center on the Swainsboro campus is recognized as a Center of Distinction by the Georgia Department of Early Care and Learning.
<https://www.decal.ga.gov/>
- Southeastern Technical College is a Certified Cisco Network Academy.
<http://www.cisco.com/web/learning/netacad/index.html>
- Southeastern Technical College is a Microsoft IT Academy. The IT Academy provides tools to train students on Microsoft technologies, help them succeed in school, and prepare them for the global economy. The program includes access to a variety of curricula and certifications, software licenses, and a range of instruction from computer basics to high-level programming and architecture.
<http://www.microsoft.com/education/msitacademy/default.aspx>
- Emergency Medical Technician graduates are eligible to sit for the National Registry of EMTs, Emergency Medical Technician (EMT) Exam.
- Advanced Emergency Medical Technician (AEMT) graduates are eligible to sit for the National Registry of EMTs, Advanced Emergency Medical Technician (AEMT) Exam.
- EMS Professions graduates are eligible to sit for the National Registry of EMTs, Advanced Emergency Medical Technician (AEMT) Exam.
- Paramedicine program graduates are eligible to sit for the National Registry of EMTs, Paramedic Exam.
 - The Southeastern Technical College Paramedicine program is accredited by the Commission on Accreditation of Allied Health Education Programs (www.caahep.org) upon the recommendation of the Committee on Accreditation

SECTION I: GENERAL INFORMATION

of Educational Programs for the Emergency Medical Services Professions (CoAEMSP).

Commission on Accreditation of Allied Health Education Programs
1361 Park Street
Clearwater, FL 33756
727-210-2350
www.caahep.org

To contact CoAEMSP:
8301 Lakeview Parkway Suite 111-312
Rowlett, TX 75088
214-703-8445
FAX 214-703-8992
www.coaemsp.org

- The Technical College System of Georgia's Cosmetology curriculum is approved by the Georgia State Board of Cosmetology, <http://sos.georgia.gov/plb/cosmetology/>. Graduates are eligible to take the Master Cosmetologist Licensure Exam.
- The Surgical Technology program is accredited by the Commission on Accreditation of Allied Health Education Programs (CAAHEP) upon recommendation of the Accreditation Review Council on Education in Surgical Technology and Surgical Assisting (ARC/STSA) (www.arcst.org). Graduates are eligible to take the National Certification Exam from the National Board for Surgical Technologist and Surgical Assistants (NBSTSA)
CAAHEP, 1361 Park Street, Clearwater, FL 33756, (727) 210-1300. www.caahep.org
ARC-ST - www.arcst.org
- The Radiologic Technology program is accredited by the Joint Review Committee on Education in Radiologic Technology (JRCERT), 20 North Wacker Drive, Suite 2850, Chicago, IL 60606-3182, (312) 704-5300, www.jrcert.org. Graduates are eligible to take the National Registry Examination sponsored by the American Registry of Radiologic Technologists.
- The Clinical Laboratory Technology program is accredited by the National Accrediting Agency for Clinical Laboratory Sciences (NAACLS), 5600 N. River Road, Suite 720, Rosemont, Illinois 60018-5119, (773) 714-8880. <http://www.naacls.org>
- The Pharmacy Technology program is accredited by the American Society of Health-System Pharmacists, 7272 Wisconsin Avenue, Bethesda, MD 20814, (301) 657-3000, www.ashp.org. Graduates are eligible to take the National Pharmacy Technician Certification Exam.
- The Dental Hygiene program is accredited by the Commission on Dental Accreditation (CODA) - American Dental Association (ADA). The Commission is a specialized accrediting body recognized by the United States Department of Education. The Commission on Dental Accreditation can be contacted at (312) 440-4653 or at 211 East Chicago Avenue, Chicago, IL 60611.
<http://www.ada.org/prof/ed/accred/commission/index.asp>
Graduates are eligible to take the ADA National Board Dental Hygiene Examination and the CRDTS National Dental Hygiene Examination.
- In addition, Southeastern Technical College is a member of the following organizations:
 - The American Association of Collegiate Registrars and Admissions Officers

SECTION I: GENERAL INFORMATION

- The American Association of Community Colleges
- The National Association of College and University Business Officers
- The National Council on Student Development
- The Council for Higher Education Accreditation

SECTION II

ENROLLMENT

SECTION II: ENROLLMENT

Credit Enrollment (Unduplicated)

Headcount, Credit Hours and FTE (Full-Time Equivalency)

		2010-11	2011-2012	2012-2013
		FY11	AY12	AY13
Headcount		3234	2554	2458
		FY11	AY12	AY13
Credit Hours		76809	41339	39113
		FY11	AY12	AY13
FTE		1706	1377	1303

Source: TCSG Data Center EOY Total Rpt

Enrollment and Credit Hours by Campus

Campus	2010-11		2011-2012		2012-2013	
	FY11		AY12		AY13	
	Enroll	Credit Hrs	Enroll	Credit Hrs	Enroll	Credit Hrs
Vidalia	2,125	50,411	1,722	28,414	1,748	27,834
Swainsboro	1,084	25,272	771	12,258	724	11,279
Glennville	64	1,126	74	667	0	0
(Unduplicated) TOTAL	3,234	76,809	2,567	41,339	** 2472	39,113

Source: TCSG Data Center DC#135

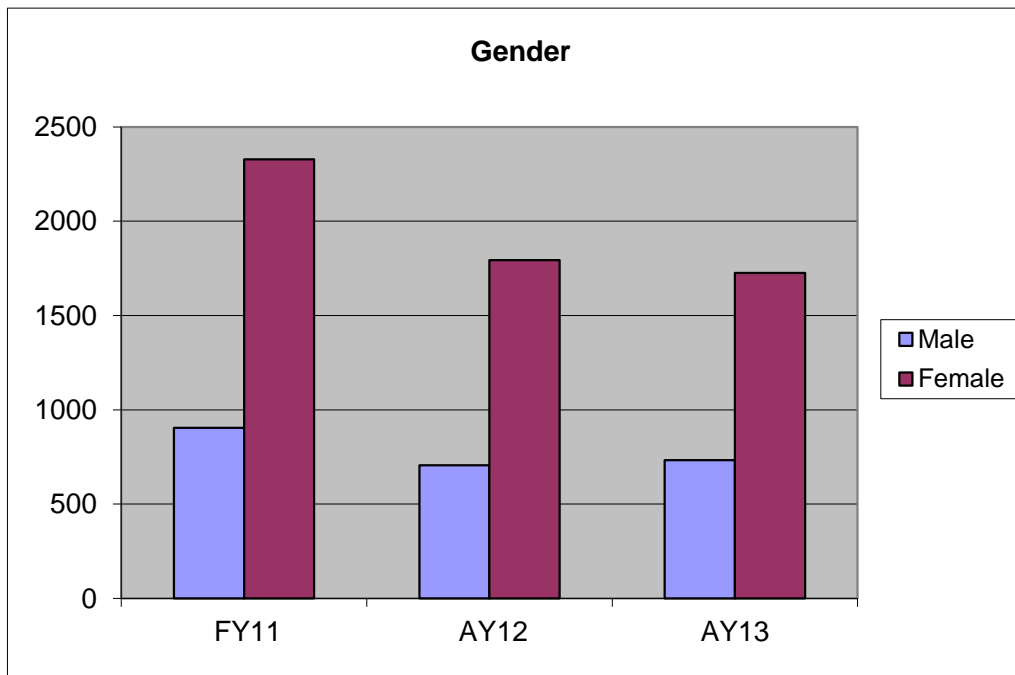
** Unduplicated numbers do not equal the sum. If a student was assigned more than one campus during the year, they will be reported for each campus.

SECTION II: ENROLLMENT

Gender

	2010-11	2011-12	2012-13
	FY11	AY12	AY13
Male	905	706	733
Female	2,329	1,794	1,725
TOTAL	3,243	2,554	2,458

Source: TCSG Data Center EOY Gender Rpt



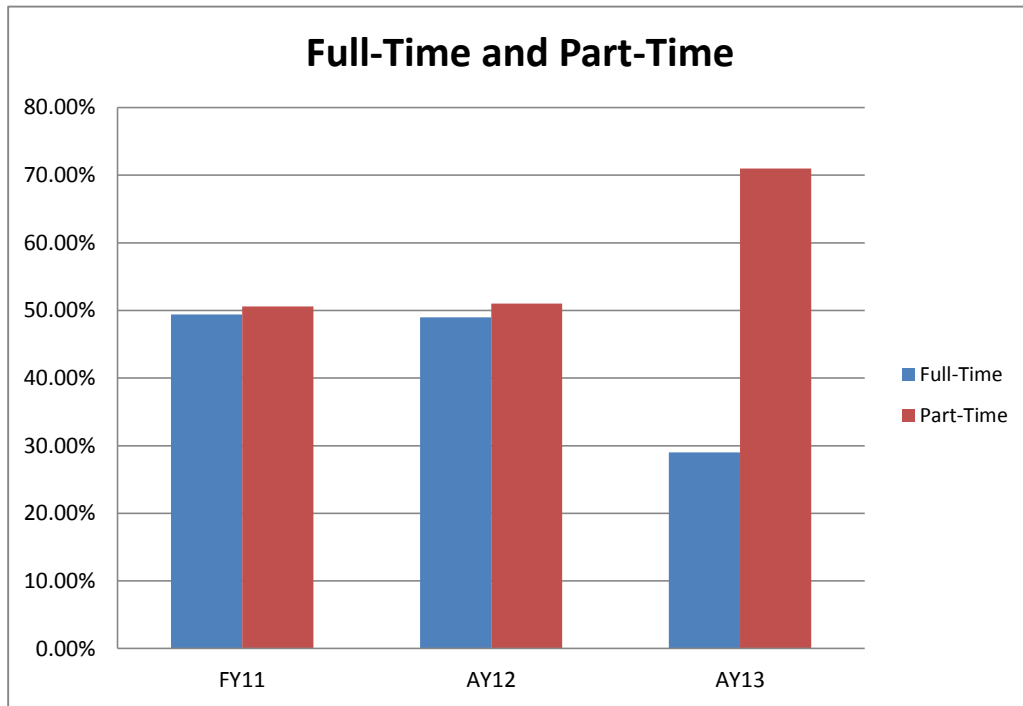
SECTION II: ENROLLMENT

Full-Time and Part-Time

(Based on Fall Quarter Enrollment)

	FY11	AY12	AY13
	Fall 2011	Fall 2012	Fall 2013
Full-Time	49.40%	49.00%	29.00%
Part-Time	50.60%	51.00%	71.00%
TOTAL	100.00%	100.00%	100.00%

Source: TCSG Data Center EOQ FTPT Rpt

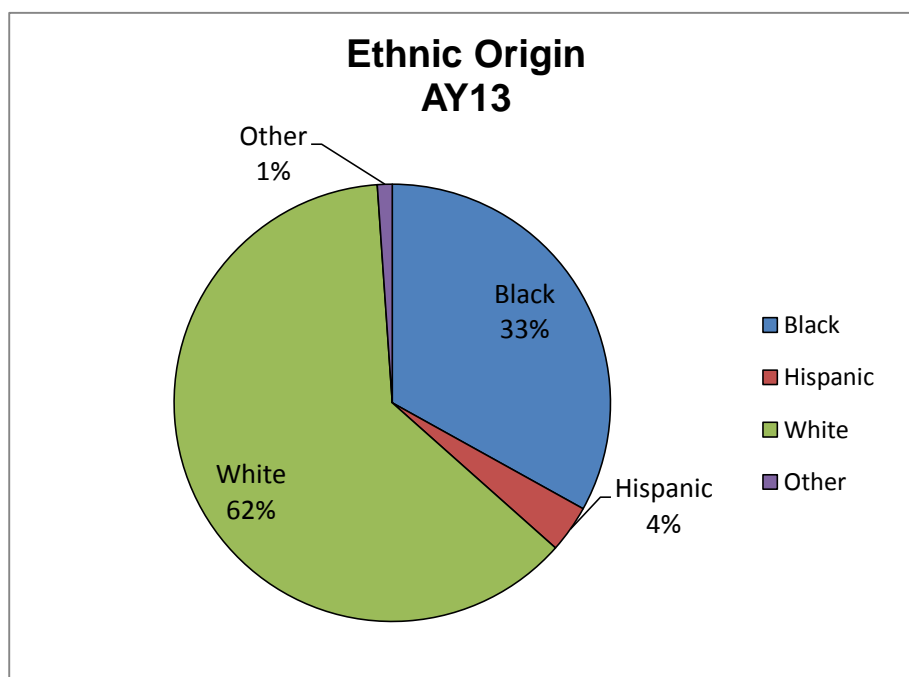


SECTION II: ENROLLMENT

Race/Ethnic Origin

	Total	American Indian		Asian		Black		Hispanic		Native Hawaiian		Two or More Races		White		Nonresident Alien		UnKnown	
		No.	%	No.	%	No.	%	No.	%	No.	%	No.	%	No.	%	No.	%	No.	%
FY11	3,233	10	0.3%	7	0.2%	1,167	36.1%	108	3.3%	1	0.0%	2	0.1%	1,931	59.7%	1	0.0%	7	0.2%
AY12	2,544	8	0.3%	2	0.1%	835	32.7%	88	3.4%	0	0.0%	10	0.4%	1,607	62.9%	2	0.1%	2	0.1%
AY13	2,458	4	0.2%	6	0.2%	812	33.0%	86	3.5%	1	0.0%	14	0.6%	1,532	62.3%	2	0.0%	2	0.1%

Source: TCSG Data Center EOY Race Rpt



SECTION II: ENROLLMENT

County of Residence

	FY 2011 2010-2011		AY 2012 2011-2012		AY 2013 2012-2013	
County	##	%	##	%	##	%
Appling	73	2.20%	58	2.30%	58	2.40%
Bacon	0	0.00%	3	0.10%	2	0.10%
Baldwin	1	0.00%	0	0.00%	0	0.00%
Bartow	1	0.00%	1	0.00%	1	0.00%
Ben Hill			1	0.0%	0	0.00%
Berrien	1	0.00%	1	0.00%	0	0.00%
Bibb	0	0.00%	1	0.00%	1	0.00%
Bleckley	2	0.10%	1	0.00%	1	0.00%
Bryan	3	0.10%	1	0.00%	0	0.00%
Bulloch	26	0.80%	25	1.00%	17	0.70%
Burke	38	1.20%	27	1.10%	26	1.10%
* Candler	84	2.60%	64	2.50%	73	3.00%
Chatham	4	0.10%	6	0.20%	2	0.10%
Cherokee	2	0.10%	2	0.10%	2	0.10%
Clarke	0	0.00%	0	0.00%	1	0.00%
Clayton	2	0.10%	0	0.00%	0	0.00%
Cobb	1	0.00%	0	0.00%	0	0.00%
Coffee	4	0.10%	3	0.10%	3	0.10%
Columbia	0	0.00%	0	0.00%	1	0.00%
Crisp	1	0.00%	0	0.00%	0	0.00%
DeKalb	2	0.10%	1	0.00%	0	0.00%
Dodge	3	0.10%	2	0.10%	4	0.20%
Dougherty	1	0.00%	0	0.00%	0	0.00%
Douglas	1	0.00%	0	0.00%	0	0.00%
Effingham	3	0.10%	2	0.10%	1	0.00%
Elbert	1	0.00%	0	0.00%	0	0.00%
* Emanuel	636	19.40%	480	18.80%	491	20.0%
Evans	25	0.80%	25	1.00%	28	1.10%
Fannin	1	0.00%	1	0.00%	1	0.00%
Floyd	0	0.00%	1	0.00%	1	0.00%
Forsyth	2	0.10%	0	0.00%	0	0.00%
Fulton	2	0.10%	2	0.10%	0	0.00%
Gilmer	1	0.00%	0	0.00%	0	0.00%
Glynn	0	0.00%	0	0.00%	2	0.10%

SECTION II: ENROLLMENT

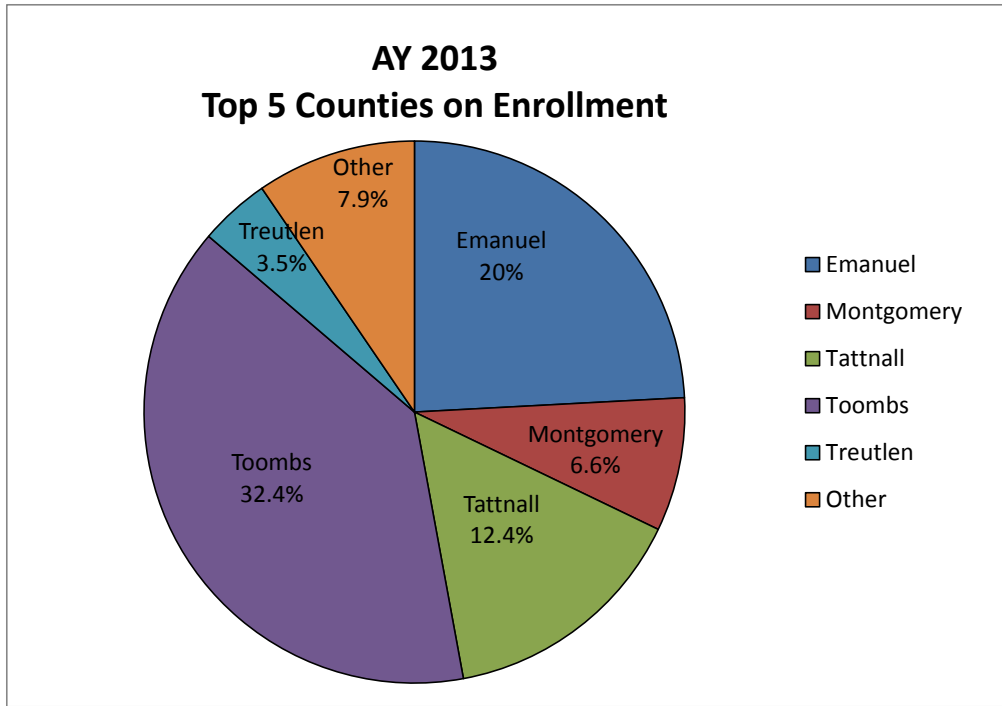
Gwinnett	1	0.00%	2	0.10%	1	0.00%
Hall	1	0.00%	0	0.00%	0	0.00%
Harris	0	0.00%	0	0.00%	1	0.00%
Henry	2	0.10%	2	0.10%	0	0.00%
Houston	1	0.00%	0	0.00%	0	0.00%
Irwin	1	0.00%	0	0.00%	0	0.00%
Jackson	0	0.00%	1	0.00%	0	0.00%
Jeff Davis	98	3.00%	91	3.60%	83	3.40%
Jefferson	73	2.20%	48	1.90%	49	2.00%
* Jenkins	92	2.80%	67	2.60%	64	2.60%
* Johnson	96	2.90%	79	3.10%	56	2.30%
Lamar	1	0.00%	0	0.00%	0	0.00%
Laurens	41	1.20%	29	1.10%	32	1.30%
Lee	0	0.00%	0	0.00%	1	0.00%
Liberty	13	0.40%	4	0.20%	2	0.10%
Long	13	0.40%	5	0.20%	5	0.20%
Lowndes	1	0.00%	3	0.10%	0	0.00%
Madison	0	0.00%	1	0.00%	0	0.00%
* Montgomery	206	6.30%	168	6.60%	161	6.60%
Newton			1	0.00%	0	0.00%
Oconee	1	0.00%	0	0.00%	0	0.00%
Pierce	3	0.10%	2	0.10%	2	0.10%
Richmond	6	0.20%	6	0.20%	5	0.20%
Screven	6	0.20%	1	0.00%	1	0.00%
Stephens	1	0.00%	1	0.00%	0	0.00%
Spalding	0	0.00%	0	0.00%	1	0.00%
Sumter	1	0.00%	1	0.00%	0	0.00%
Talbot	1	0.00%	0	0.00%	0	0.00%
* Tattnall	344	10.50%	315	12.30%	305	12.4%
Telfair	35	1.10%	27	1.10%	29	1.20%
* Toombs	1079	32.90%	813	31.80%	796	32.4%
* Treutlen	128	3.90%	100	3.90%	87	3.5%
Walton	0	0.00%	1	0.00%	0	0.00%
Ware	1	0.00%	0	0.00%	1	0.00%
Washington	13	0.40%	3	0.10%	0	0.00%
Wayne	9	0.30%	1	0.00%	1	0.00%
Wheeler	86	2.60%	69	2.70%	66	2.70%
Unknown	0	0.00%	0	0.00%	0	0.00%
Out of State:	8	0.20%	3	0.10%	5	0.20%
** (Unduplicated) TOTAL	3283	100.00%	2553	99.40%	2458	100.0%

* County is in the College's Service Delivery Area (SDA)

Source: TCSG Data Center Rpt #DC 122

** Unduplicated numbers do not equal the sum.

SECTION II: ENROLLMENT

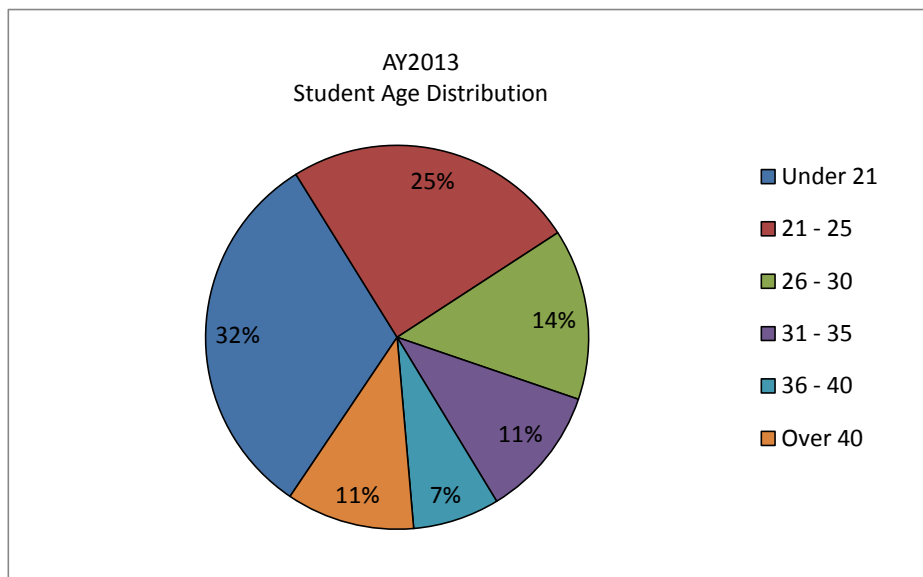


SECTION II: ENROLLMENT

Student Age Distribution (Based on Fall Quarter Enrollment)

	2010-11		2011-12		2012-13	
	FY11		AY12		AY13	
	No.	%	No.	%	No.	%
Under 21	937	29.00%	826	32.30%	779	31.70%
21 - 25	790	24.40%	615	24.10%	607	24.70%
26 - 30	555	17.20%	362	14.20%	354	14.40%
31 - 35	341	10.50%	292	11.40%	272	11.10%
36 - 40	237	7.30%	159	6.20%	180	7.30%
Over 40	374	11.60%	300	11.70%	266	10.8%
TOTAL	3234	100.00%	2554	100.00%	2458	100.00%

Source: TCSG Data Center EOY Rpt Age



SECTION II: ENROLLMENT

Student to Faculty Ratio

	Fall 2010	Fall 2011	Fall 2012	Fall 2013
Enrollment	1995	1826	1747	1525
FTE	1461	1086	1047	927
# Full-time Instructors	61	62	59	61
# Adjunct Instructors	52	49	49	45
Instructor FTE	78.16	78.17	75.17	75.85
Student/Faculty Ratio	18.69	13.89	13.93	12.22

Student/Faculty Ratio: Calculated by dividing Student Enrollment F.T.E. by Faculty F.T.E.

Student Enroll & FTE: From TCSG DC 126.

Faculty FTE: Calculated by full-time faculty plus 1/3 part-time faculty. – TCSG Data Center Report

Note: This is not the IPEDS Calculation for Student to Faculty Ratio.

SECTION III

PROGRAM ENROLLMENT

SECTION III: PROGRAM ENROLLMENT

Program Enrollment

Green Text denotes Semester Conversion Title	2010-11	2011-2012	2012-13
Associate Degrees	FY11	AY12	AY13
Accounting	31	22	24
Business Administrative Technology	32	39	39
Business Management Degree (formerly Management and Supervisory Development)	19	22	30
Clinical Laboratory Technology	22	19	21
C.I.S Internet Specialist/Web Site Design	5	11	14
C.I.S. Networking Specialist	12	22	17
Computer Support Specialist	19	7	10
Criminal Justice Technology	46	53	50
Dental Hygiene	22	33	31
Early Childhood Care/Education	30	23	27
Electronics Technology	18	19	11
Forestry Technology	11	12	3
Fish and Wildlife Management – no longer enrolling (formerly Fish & Game)	8	0	2
Marketing Management	5	5	9
Radiologic Technology			9
Diplomas	FY11	AY12	AY13
Accounting	64	38	34
Air Conditioning Technology	45	35	35
Automotive Fundamentals			4
Automotive Technology			45
Business Administrative Technology	204	157	141
Business Management (formerly Management and Supervisory Development)	57	41	66
C.I.S Computer Support Specialist	54	44	34
C.I.S Internet Specialist/Web Site Design	37	26	18
C.I.S. Networking Specialist	39	29	29
Cosmetology	176	142	110
Criminal Justice Technology	182	124	101
Early Childhood Care/Education	105	84	94
*(Electrical Systems Technology (formerly Electrical Construction and Maintenance)	118	78	72
Electronics Fundamentals	1	0	1
Electronics Technology	41	23	17
EMS Professions		24	28
Fish & Wildlife Management (formerly Game and Fish Preserve Management)	32	14	18
Forestry Technology	16	11	11
Marketing	26	23	21
Medical Assisting	173	120	49
Paramedicine (formerly Paramedic Technology)	17	12	19
Pharmacy Technology	65	65	51
Practical Nursing	99	94	87
Radiologic Technology (no longer offer diploma)	17	23	13

SECTION III: PROGRAM ENROLLMENT

Surgical Technology	64	32	29
Welding and Joining Technology	92	88	93
Technical Certificates of Credit (TCC)	FY11	AY12	AY13
Administrative Support Assistant	1	0	1
Advance Emergency Medical Technical (AEMT)			
Advanced Shielded Metal Arc Welder (formerly Overhead Shielded Metal Arc Welder)	8	0	
Air Conditioning Technician Assistant	0	0	
Auto Electrical/Electronic Systems Technician			
Automotive Chassis Technician Specialist			
Automotive Climate Control Technician			
Automotive Engine Performance Technician			
Automotive Engine Repair Technician			
Automotive Transmission/Transaxle Tech Specialist			
Basic Shielded Metal Arc Welder (formerly Flat Shielded Metal Arc Welder)	14	14	7
Child Development Associate (CDA) Preparation (formerly Child Development Associate I)	18	4	1
Cisco Network Specialist	4	0	
Commercial Truck Driving	65	65	105
Commercial Wiring			
CompTIA A+ Certified Preparation	2	1	
Early Childhood Care & Education Basics (formerly Child Care Assisting)	7	0	
Electrical Contracting Technician			2
Electrical Systems Assistant	3	0	
Emergency Medical Technician (EMT) (formerly Intermediate)	30	0	1
Flux Cored ARC Welder	4	2	1
Forest Technician Assistant			
Gas Metal Arc Welder Fabricator	19	3	14
Gas Tungsten Arc Welder	4	1	2
Health Care Assistant	633	557	430
Health Care Science	210	247	287
Help Desk Specialist (formerly Help Desk Assistant)	7	0	1
Human Resource Management Specialist	2	0	3
Internet Specialist Web Site Developer (formerly Internet Specialist Web Site Designer)	0	0	
Introduction to Criminal Justice			21
Management and Leadership Specialist	0	0	
Medical Administrative Technician	113	51	108
Medical Front Office Assistant	3	1	1
Microsoft Excel Application Professional			
Microsoft Network Administrator	0	0	
Microsoft Office Application Professional	2	2	
Microsoft Word Application Professional			1
Nurse Aide (formerly Certified Nurse Aide)	316	110	107
Payroll Accounting Specialist	2	0	
Residential Wiring Technician	1	0	
Shampoo Technician	12	0	

SECTION III: PROGRAM ENROLLMENT

Supervisor/Management Specialist	1	0	
Technical Management Specialist (formerly Visual Technical Communication)	18	0	
Wildlife Management Assistant	18	17	10
Institutionally Accepted	13	76	62
Special Admit	13	7	6
Transient	32	12	6
TOTAL	3728	2776	2458

Source: TCSG Data Center Rpt #DC180
Unduplicated numbers do not equal the sum.

SECTION IV

PROGRAM LICENSURE

SECTION IV: PROGRAM LICENSURE

Program Licensure Pass Rates (Cumulative)

	2010-11	2011-12	2012-13
Program	FY11	AY12	AY13
Certified Nurse Aide	Written 94% Skills 84%	Written 93% Skills 60%	Written 88% Skills 73%
Clinical Laboratory Technology	100%	100%	86%
Commercial Truck Driving	100%	100%	100%
Cosmetology	100%	Written 95% Skills 100%	Written 95% Skills 100%
Dental Hygiene	100%	100%	NTL Board 100% CRDTS- Pending Dec/Jan
Advanced Emergency Medical Tech	N/A	N/A	75%
** Emergency Medical Technician	87.5%	100%	100%
Medical Assisting	83%	100%	93%
** Paramedic Technology	100%	100%	90%
Pharmacy Technology	100%	66%	100%
Practical Nursing	92.3%	100%	100%
Radiologic Technology	100%	100%	92%
Surgical Technology	30%	60%	83%

Source: Director of Allied Health Accreditation

** Students are allowed a maximum of six attempts to complete all sections of the exam; therefore, they are not counted as failing until all attempts have been exhausted. Also, students are reported during the time period in which the test is taken, not necessarily the graduating term.

SECTION V
GRADUATES

SECTION V: GRADUATES

Awards Conferred By Program

	2010-11 FY11	2011-2012 AY12	2012-13 AY13
Associate Degrees			
Accounting	7	2	5
Business Administrative Technology	2	3	5
Business Management	3	6	1
Clinical Laboratory Technology	6	4	11
Computer Support Specialist	3	0	2
Criminal Justice Technology	4	5	7
Dental Hygiene	5	3	6
Early Childhood Care/Education	4	1	2
Electronics Technology	5	9	2
Forest Technology	1	3	1
Game and Fish Preserve Management	1	2	1
Internet Specialist - Web Site Design	2	0	2
Marketing Management	0	0	0
Networking Specialist	3	1	5
Diplomas			
Accounting	9	3	3
Air Conditioning Technology	8	7	3
Automotive Technology			4
Business Administrative Technology	23	10	20
Business Management	1	2	4
Business Office Technology	0	0	0
Computer Support Specialist	5	0	5
Cosmetology	37	23	31
Criminal Justice Technology	27	22	17
Early Childhood Care/Education	8	4	6
Electrical Construction and Maintenance			1
Electrical Systems Technology	19	4	18
Electronics Fundamentals	1	0	0
Electronics Technology	6	0	2
EMS Professions			2
Forest Technology	3	4	0
Game and Fish Preserve Management			2
Industrial Electrical Technology	7	2	0
Internet Specialist - Web Site Design	0	0	1
Marketing Management	3	0	0
Medical Assisting	35	21	27
Networking Specialist	1	0	1
Paramedicine	0	0	9
Pharmacy Technology	5	16	12
Practical Nursing	27	37	32
Radiologic Technology (No longer offering diploma)	6	6	12
Surgical Technology	9	5	6
Welding and Joining Technology	11	2	12

SECTION V: GRADUATES

Technical Certificates of Credit (TCC)			
Administrative Support Assistant	22	9	13
Advanced Emergency Medical Technician			5
Advanced Shielded Metal Arc Welder	11	5	12
Air Conditioning Repair Specialist	1	0	0
Air Conditioning Technician Assistant	0	0	11
Auto Electrical/Electronic Systems Technician			25
Automotive Chassis Technician Specialist			14
Automotive Climate Control Technician			14
Automotive Engine Performance Technician			13
Automotive Engine Repair Technician			16
Automotive Transmission/Transaxle Tech Specialist			11
Basic Electrical Technician	0	0	0
CAD Operator Architectural	0	0	0
Certified Nurse Aide	84	38	47
Child Care Assisting (No longer offered)	11	9	0
Child Development Associate I (No longer offered)	11	1	0
CDA Preparation TCC			1
Cisco Network Specialist	6	0	3
Commercial Truck Driving	45	48	75
Commercial Wiring	16	14	27
CompTIA A+ Certified Preparation	11	13	18
Computer Repair Technician	0	0	0
Early Childhood Care And Education Basics			27
Early Childhood Program Administration	0	0	0
Electrical Contracting Technician	19	13	23
Electrical Systems Assistant	17	7	19
Emergency Medical Technician	8	8	8
Basic Shielded Metal Arc Welder	12	17	26
Flux Cored ARC Weld	5	7	12
Forest Technician Assistant	7	0	3
Gas Metal Arc Welder Fabricator	19	7	18
Gas Tungsten Arc Welder	8	5	14
General Office Assistant (No longer offered)	24	0	0
Healthcare Assistant	88	67	49
Healthcare Science	3	0	6
Help Desk Assistant (No longer offered)	5	6	0
Help Desk Specialist			11
Human Resource Management Specialist	3	3	0
Imaging Science Services Assistant	22	0	6
Internet Specialist Web Site Designer (No longer offered)	0	0	0
Internet Specialist Web Site Designer (No longer offered)	0	0	0
Introduction to Criminal Justice			58
Law Enforcement Investigations (No longer offered)	19	0	0
Law Enforcement Technician (No longer offered)	37	47	1
Marketing Specialist5			1
Management and Leadership Specialist	5	3	10
Medical Administrative Technician	32	30	32
Medical Front Office Assistant			14
Medical Office Assistant (No longer offered)	11	3	0
Microsoft Excel Application User (No longer offered)	7	1	0
Microsoft Excel Application Professional			17
Microsoft Network Administrator			7
Microsoft Office Application Professional	12	1	9

SECTION V: GRADUATES

Microsoft Word Application Professional	3	6	11
Network Administrator	1	0	0
Payroll Accounting Specialist	18	10	9
Residential Wiring Technician	17	16	27
Shampoo Technician	8	0	52
Supervisor/Management Specialist	7	4	21
Technical Management Specialist			3
Wildlife Management Assistant	19	9	13
TOTAL	951	614	842

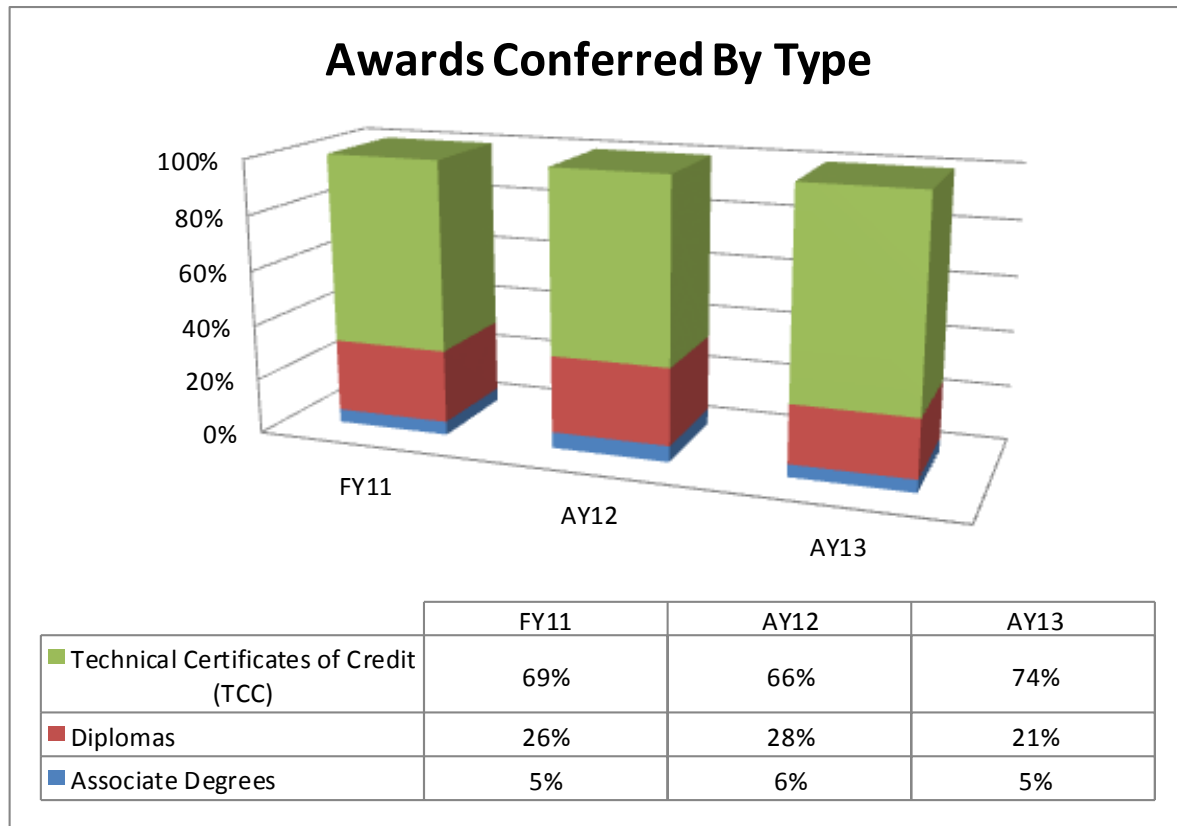
Source: TCSG Data Center Rpt #DC109

SECTION V: GRADUATES

Awards Conferred By Type

	2010-11	2011-12	2012-13
	FY11	AY12	AY13
Associate Degrees	46	39	50
Diplomas	251	186	230
Technical Certificates of Credit (TCC)	654	442	812
TOTAL	951	667	1,092

Source: TCSG Data Center Rpt #DC109



SECTION V: GRADUATES

Unduplicated Graduates & Total Placement Rates

	2010-11	2011-12	2012-13
Employment Status	FY11	AY12	AY13
Employed in Field	308	269	281
Military	4	2	1
Employed in Related Field	40	29	24
Employed in Unrelated Field	30	38	62
Employed in Field & Continued Education	2	0	0
Employed in Related Field & Continued Education	5	0	4
Employed in Unrelated Field & Continued Education	90	82	84
Continued Education	214	84	128
Not Employed	6	12	36
Not Available for Employment	8	3	5
Refused Employment	0	1	0
Status Unknown	12	11	85
Total Awards Conferred (unduplicated)	719	531	710
Placed in Field Rate * (%)	99.14%	82.87%	62.8%
Total Placement Rate ** (%)	88.21%	97.67%	94.19%

Source: TCSG Data Center Report #DC108 -- To date as of 02/19/2014 for FY11, AY12, & AY13

* Placed in Field Rate = (Emp in Field + Military + Emp in Rel Field + Emp in Field & Cont Educ + Emp in Rel Field & Cont Educ)/Total Grads - (Emp Unrel Field & Cont Educ + Cont Ed + Not Avail)

** Total Placement Rate = (Emp in Field + Military + Emp in Rel Field + Emp Unrel Field + Emp in Field & Cont Educ + Emp Rel Field & Cont Educ + Emp Unrel Field & Cont Educ + Cont Educ)/(numerator + Not Emp)

SECTION V: GRADUATES

Total Placement Rates by PAS Program Area AY2013

Program (By Major, with Total for each PAS Program Area)	Total Placement Rate	Total Award	Empld In Field	Military	Empld in Rel Field	Empld in Unrel Field	Empld In Field & Cont Ed	Empld In Rel Field & Cont Ed	Empld in Unrel Field & Cont Ed	Cont Educ	Not Empld	Unavail for Emplmt	Refused Emplmt	Status Unknown
Accounting (AC12)	100.0%	3	1	0	0	1	0	0	0	1	0	0	0	0
Accounting (AC13)	100.0%	5	4	0	0	0	0	0	0	1	0	0	0	0
Payroll Accounting Specialist (5AP1)	100.0%	1	0	0	0	0	0	0	0	1	0	0	0	0
Payroll Accounting Specialist (PA61)	100.0%	8	3	0	0	1	0	0	1	3	0	0	0	0
Accounting	100.0%	17	8	0	0	2	0	0	1	6	0	0	0	0
Air Conditioning Technician Assistant (AZ31)	75.0%	11	1	0	0	0	0	0	1	1	1	0	0	7
Air Conditioning Technology (ACT2)	66.7%	3	0	0	1	1	0	0	0	0	1	0	0	0
Air Conditioning Technology	71.4%	14	1	0	1	1	0	0	1	1	2	0	0	7
Auto Electrical/Electronic Systems Technician (AE41)	100.0%	25	1	0	2	0	0	0	0	0	0	0	0	22
Automotive Chassis Technician Specialist (ASG1)	100.0%	14	1	0	2	0	0	0	0	0	0	0	0	11
Automotive Climate Control Technician (AH21)	100.0%	14	1	0	2	0	0	0	0	0	0	0	0	11
Automotive Engine Performance Technician (AE51)	100.0%	13	1	0	2	0	0	0	0	0	0	0	0	10
Automotive Engine Repair Technician (AE61)	100.0%	16	1	0	2	0	0	0	0	0	0	0	0	13
Automotive Technology (AT14)	100.0%	4	1	0	1	0	0	0	0	0	0	0	0	2
Automotive Transmission/Transaxle Tech Specialist (AA71)	100.0%	11	1	0	2	0	0	0	0	0	0	0	0	8
Automotive Technology	100.0%	97	7	0	13	0	0	0	0	0	0	0	0	77
Administrative Support Assistant (AS21)	88.9%	13	4	0	1	1	0	0	0	2	1	0	0	4
Business Administrative Technology (BA22)	75.0%	20	5	0	2	0	0	0	3	2	4	0	0	4
Business Administrative Technology (BA23)	80.0%	5	2	0	0	0	0	0	0	2	1	0	0	0
Medical Administrative Technician (MA41)	91.7%	32	2	0	2	2	0	3	7	6	2	0	0	8
Medical Front Office Assistant (MF21)	66.7%	14	4	0	1	0	0	0	1	2	4	0	0	2
Microsoft Excel Application Professional (ME51)	92.3%	17	5	0	2	1	0	0	1	3	1	0	0	4
Microsoft Office Application Professional (MF41)	100.0%	9	3	0	2	0	0	0	0	2	0	0	0	2
Microsoft Word Application Professional (MWA1)	90.0%	11	2	0	1	0	0	0	0	6	1	0	0	1
Business and Office Technology	85.4%	121	27	0	11	4	0	3	12	25	14	0	0	25
Commercial Truck Driving (CT61)	84.4%	75	31	0	0	4	0	0	1	2	7	0	0	30
Commercial Truck Driving	84.4%	75	31	0	0	4	0	0	1	2	7	0	0	30
Cisco Network Specialist (CN71)	100.0%	3	2	0	0	0	0	0	0	1	0	0	0	0
CompTIA A+ Certified Preparation (CA61)	100.0%	18	5	0	0	0	0	0	2	11	0	0	0	0
Computer Support Specialist (CS14)	100.0%	5	0	0	0	0	0	0	1	4	0	0	0	0
Computer Support Specialist (CS23)	100.0%	2	1	0	0	0	0	0	1	0	0	0	0	0

SECTION V: GRADUATES

Help Desk Specialist (HD41)	100.0%	11	3	0	0	0	0	0	2	6	0	0	0	0
Internet Specialist Web Site Developer (ISE1)	100.0%	1	0	0	0	0	0	0	1	0	0	0	0	0
Internet Specialist Web Site Design (IS53)	100.0%	2	0	0	0	0	0	0	2	0	0	0	0	0
Internet Specialist Web Site Design (IS64)	100.0%	1	0	0	0	0	0	0	1	0	0	0	0	0
Microsoft Network Administrator (MS11)	100.0%	7	3	0	0	0	0	0	1	3	0	0	0	0
Networking Specialist (NS13)	100.0%	5	3	0	0	0	0	0	1	1	0	0	0	0
Networking Specialist (NS14)	100.0%	1	0	0	0	0	0	0	0	1	0	0	0	0
Computer Information Systems	100.0%	56	17	0	0	0	0	0	12	27	0	0	0	1
Cosmetology (CO12)	96.2%	31	14	0	0	7	0	0	1	3	1	2	0	3
Shampoo Technician (ST11)	94.6%	52	12	0	0	6	0	0	1	16	2	2	0	13
Cosmetology	95.2%	83	26	0	0	13	0	0	2	19	3	4	0	16
Criminal Justice Technology (CJT2)	93.3%	17	5	0	0	1	0	0	3	5	1	0	0	2
Criminal Justice Technology (CJT3)	66.7%	7	1	0	0	0	0	0	1	2	2	0	0	1
Introduction to Criminal Justice (IT51)	100.0%	58	8	0	0	3	0	1	4	11	0	0	0	31
Law Enforcement Technician (LEF1)	100.0%	1	0	0	0	0	0	0	0	1	0	0	0	0
Criminal Justice	93.9%	83	14	0	0	4	0	1	8	19	3	0	0	34
Dental Hygiene (DH13)	83.3%	6	4	0	0	1	0	0	0	0	1	0	0	0
Dental Hygiene	83.3%	6	4	0	0	1	0	0	0	0	1	0	0	0
CDA Preparation TCC (CE71)	100.0%	1	0	0	0	0	0	0	0	1	0	0	0	0
Early Childhood Care and Education Basics (EC31)	100.0%	27	8	0	0	1	0	0	2	9	0	0	0	7
Early Childhood Care/Education (EC13)	100.0%	2	2	0	0	0	0	0	0	0	0	0	0	0
Early Childhood Care/Education (ECC2)	100.0%	6	3	0	0	0	0	0	0	2	0	0	0	1
Early Childhood Care and Education	100.0%	36	13	0	0	1	0	0	2	12	0	0	0	8
Commercial Wiring (CW31)	82.4%	27	4	0	1	6	0	0	1	2	3	0	0	10
Electrical Construction and Maintenance (WO02)	100.0%	1	0	0	0	1	0	0	0	0	0	0	0	0
Electrical Contracting Technician (ECL1)	86.7%	23	5	0	0	6	0	0	1	1	2	0	0	8
Electrical Systems Assistant (ESA1)	93.3%	19	4	0	1	4	0	0	2	3	1	0	0	4
Electrical Systems Technology (ES12)	92.3%	18	5	0	0	4	0	0	0	3	1	0	0	5
Residential Wiring Technician (RW61)	84.2%	27	3	0	0	7	0	0	3	3	3	0	0	8
Electrical Construction and Maintenance	87.5%	115	21	0	2	28	0	0	7	12	10	0	0	35
Electronics Technology (ET13)	N/A	2	0	0	0	0	0	0	0	0	0	0	0	2
Electronics Technology (ET14)	100.0%	2	0	0	0	1	0	0	0	0	0	0	0	1
Electronics and Telecommunications	100.0%	4	0	0	0	1	0	0	0	0	0	0	0	3
Forest Technician Assistant (FTA1)	100.0%	3	0	0	0	0	0	0	0	3	0	0	0	0
Forest Technology (FT13)	N/A	1	0	0	0	0	0	0	0	0	0	0	0	1
Game and Fish Preserve Management (GFP2)	100.0%	2	1	0	0	0	0	0	0	0	0	0	0	1
Game and Fish Preserve Management (GFP3)	100.0%	1	1	0	0	0	0	0	0	0	0	0	0	0
Wildlife Management Assistant (WP11)	100.0%	13	1	1	0	0	0	0	0	8	0	0	0	3
Forestry Technology	100.0%	20	3	1	0	0	0	0	0	11	0	0	0	5
Health Care Assistant (HA21)	83.3%	45	6	0	1	6	0	1	1	10	5	2	0	13
Health Care Science (HS21)	100.0	6	1	0	0	0	0	0	0	3	0	0	0	2

SECTION V: GRADUATES

Healthcare Assistant (5CJ1)	100.0%	1	1	0	0	0	0	0	0	0	0	0	0	0
Health Care Assistant	85.7%	52	8	0	1	6	0	1	1	13	5	2	0	15
Business Management (MD12)	100.0%	4	1	0	1	0	0	0	0	2	0	0	0	0
Business Management (MD13)	100.0%	1	1	0	0	0	0	0	0	0	0	0	0	0
Human Resource Management Specialist (HRM1)	100.0%	13	3	0	2	0	0	0	0	6	0	0	0	2
Management and Leadership Specialist (MAL1)	100.0%	10	4	0	1	0	0	0	0	4	0	0	0	1
Supervisor/Management Specialist (SS31)	100.0%	21	4	0	2	0	0	0	2	6	0	0	0	7
Technical Management Specialist (TMS1)	100.0%	3	1	0	1	0	0	0	0	1	0	0	0	0
Management-Supervisory Development	100.0%	52	14	0	7	0	0	0	2	19	0	0	0	10
Marketing Specialist (MS21)	N/A	1	0	0	0	0	0	0	0	0	0	0	0	1
Marketing Management	N/A	1	0	0	0	0	0	0	0	0	0	0	0	1
Medical Assisting (MA22)	75.0%	27	6	0	1	2	0	2	3	1	5	1	0	6
Medical Assisting	75.0%	27	6	0	1	2	0	2	3	1	5	1	0	6
Clinical Laboratory Technology (CLT3)	83.3%	10	3	0	0	1	0	0	0	1	1	0	0	4
Clinical Laboratory Technology (ML03)	100.0%	1	1	0	0	0	0	0	0	0	0	0	0	0
Medical Laboratory Technology	75.0%	11	4	0	0	1	0	0	0	1	1	0	0	4
Advanced Emergency Medical Technician (AEMT) (EMH1)	100.0%	5	2	0	0	0	0	0	0	3	0	0	0	0
EMS Professions (EP12)	100.0%	2	1	0	0	0	0	0	0	1	0	0	0	0
Emergency Medical Technician (EMT) (EMJ1)	100.0%	8	2	0	0	0	0	0	0	5	0	0	0	1
Paramedicine (PT12)	1000%	9	6	0	0	0	0	0	0	0	0	0	0	3
Paramedic Technology	100.0%	24	11	0	0	0	0	0	0	9	0	0	0	4
Pharmacy Technology (PT22)	75.0%	12	5	0	0	1	0	0	0	0	2	0	0	4
Pharmacy Technology	75.0%	12	5	0	0	1	0	0	0	0	2	0	0	4
Nurse Aide (CN21)	95.2%	47	3	0	1	1	0	0	6	9	1	0	0	26
Practical Nursing (PN12)	94.1%	32	16	0	0	0	0	0	0	0	1	1	0	14
Practical Nursing and Related Programs	94.7%	79	19	0	1	1	0	0	6	9	2	1	0	40
Radiologic Technology (RT24)	90.9%	12	6	0	0	1	0	0	0	3	1	0	0	1
Radiologic Technology	90.9%	12	6	0	0	1	0	0	0	3	1	0	0	1
Surgical Technology (ST12)	83.3%	6	4	0	1	0	0	0	0	0	1	0	0	0
Surgical Technology	83.3%	6	4	0	1	0	0	0	0	0	1	0	0	0
Advanced Shielded Metal Arc Welder (OSM1)	90.9%	12	2	0	0	1	1	0	1	5	1	0	0	1
Basic Shielded Metal Arc Welder (FS31)	93.8%	26	4	0	0	1	1	0	1	8	1	0	0	10
Flux Cored ARC Welder (FC61)	100.0%	12	2	0	0	1	0	0	1	5	0	0	0	3
Gas Metal Arc Welder (GM31)	92.9%	18	3	0	0	1	1	0	1	7	1	0	0	4
Gas Tungsten Arc Welder (GTA1)	100.0%	14	2	0	0	1	1	0	1	5	0	0	0	4
Welding and Joining Technology (WAJ2)	100.0%	12	2	0	1	0	1	0	2	4	0	0	0	2
Welding and Joining Technology	95.7%	94	15	0	1	5	5	0	7	34	3	0	0	24

Source: TCSG Data Center Report #DC112

SECTION VI

FINANCIAL AID

Amount of Financial Aid Awards

	2010-11 (FY11)		2011-12 (AY12)		2012-13 (AY13)	
	Total Undupl. Recipients	Total Award Amount	Total Undupl. Recipients	Total Award Amount	Total Undupl. Recipients	Total Award Amount
State Aid						
HOPE Diploma Tuition	2827	\$3,068,063	2,167	\$2,091,510.25		
HOPE Diploma Fees	2827	\$262,768	2,167	\$30,376.20		
HOPE Diploma Books	2827	\$539,203	2,167	\$50,411.74		
Total Awards		\$3,870,034		\$2,172,298.19	2,167	\$1,483,225.49
HOPE Degree Tuition	98	\$152,910	98	\$97,005.82		
HOPE Degree Fees	98	\$12,808	98	\$2,134		
HOPE Degree Books	98	\$28,150	98	\$3,525		
Zell Miller Scholarship					2	\$3,875
Total Awards		\$193,868		\$102,664.82	78	\$63,149
ACCEL Tuition	13	\$7,650	80	\$50,400		
ACCEL Fees	13	\$920	80	\$9,630		
ACCEL Books	13	\$1,700	80	\$12,575		
Total Awards		\$10,270		\$72,605	63	\$40,380
GED Awards	79	\$38,000	79	\$32,000	39	\$19,500
GA LEAP Grant	42	\$8,158	0	0	0	0
Title IV Awards						
Federal PELL Grant	2111	\$4,914,061	1,855	\$4,443,188.51	1,777	\$3,709,509.55
Federal FSEOG Grant	169	\$42,400	450	\$99,046	344	\$84,268
Federal Work-Study	39	\$94,225	47	\$104,601.88	34	\$91,563.29
Total Awards				\$4,646,836.39		\$3,885,340.84
Loans						
Subsidized Loans			765	\$1,897,031	1,012	\$2,342,113
Unsubsidized Loans			725	\$1,816,885	819	\$2,178,716
Total Loans				\$3,713,916		\$4,520,829
Total Awards for Year		\$9,171,016		\$10,740,320.40		\$10,016,296.33
Total Receiving Aid		3,112		2440		

Source: STC Director of Financial Aid

SECTION VII

FACULTY AND STAFF

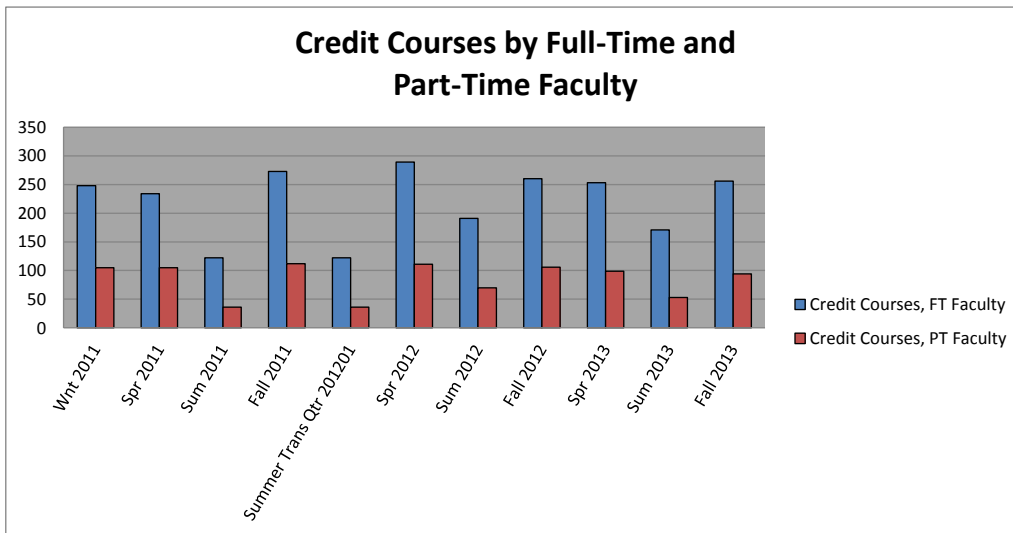
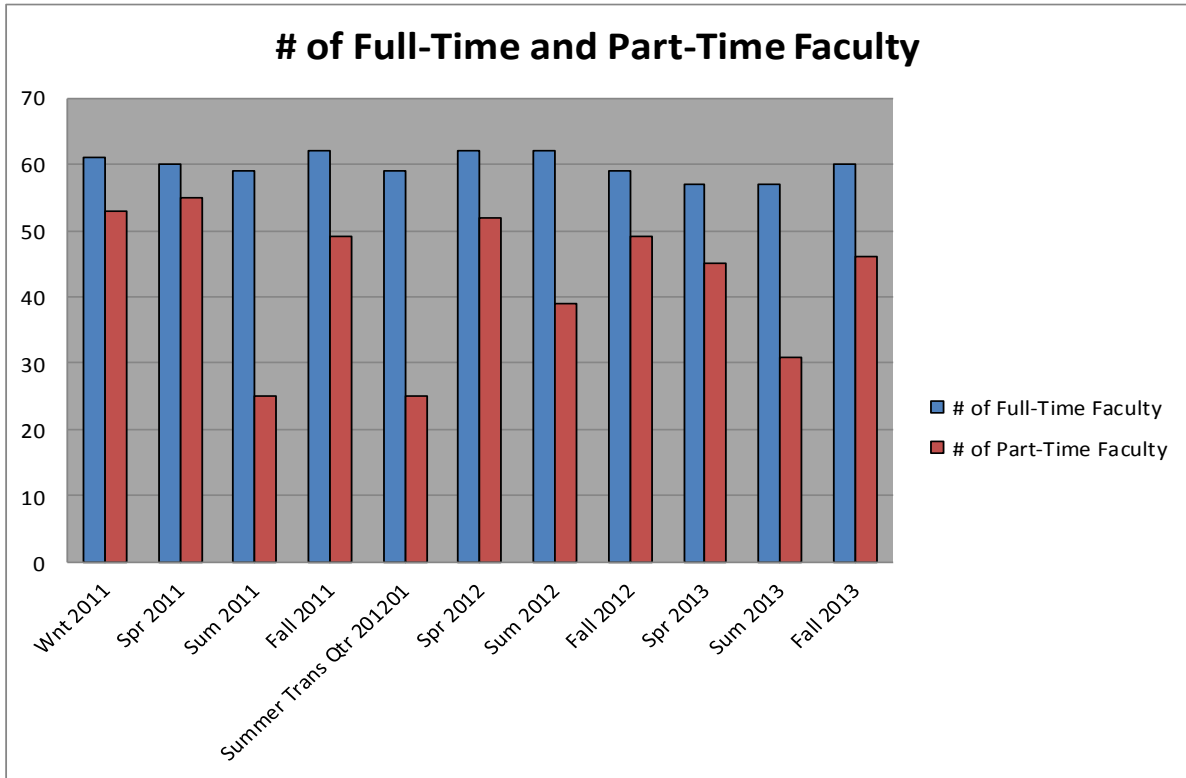
SECTION VII: FACULTY AND STAFF

Credit Courses Taught by Full-Time and Part-Time Faculty

	Wnt 2011	Spr 2011	Sum 2011	Fall 2011	Sum Trans Qtr 201201	Spr 2012	Sum 2012	Fall 2012	Spr 2013	Sum 2013	Fall 2013
# of Full-Time Faculty	61	60	59	62	59	62	62	59	57	57	60
# of Part-Time Faculty	53	55	25	49	25	52	39	49	45	31	46
	Wnt 2011	Spr 2011	Sum 2011	Fall 2011	Sum Trans Qtr 201201	Spr 2012	Sum 2012	Fall 2012	Spr 2013	Sum 2013	Fall 2013
Credit Courses, FT Faculty	248	234	122	273	122	289	191	260	253	171	256
Credit Courses, PT Faculty	105	105	36	112	36	111	70	106	99	53	94
Total # of Credit Courses	353	339	158	385	158	390	258	362	352	224	350
% Taught by FT Faculty	70%	69%	77%	71%	77%	74%	74%	72%	72%	76%	73%
% Taught by PT Faculty	30%	31%	23%	29%	23%	28%	27%	29%	28%	24%	27%

Source: SQL Rpt FacultyInfoForFactBook2.brw and ScheduleByInstructor

SECTION VII: FACULTY AND STAFF



SECTION VII: FACULTY AND STAFF

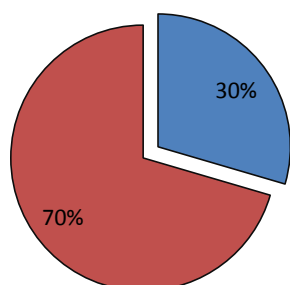
Faculty Demographics Fall 2013

		Full-Time	Part-Time	Total
Gender	Male	19	12	31
	Female	40	34	74
Ethnicity	Black	2	6	8
	White	55	40	95
	Other	2	0	2
Highest Earned Degree	Doctorate	1	1	2
	Specialist	0	0	0
	Masters	31	21	52
	Baccalaureate	10	10	20
	Associate	7	1	8
	Diploma	7	8	15
	Technical Certificate	0	1	1
	Work Experience	3	4	7
Age	20-29	1	6	7
	30-39	10	13	23
	40-49	25	15	40
	50-59	18	5	23
	60+	5	7	12

Source: SQL Rpt FacultyInfoForFactBook2.brw

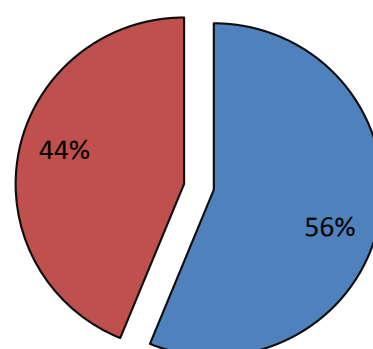
Fall 2013 - Male/Female

■ Male ■ Female

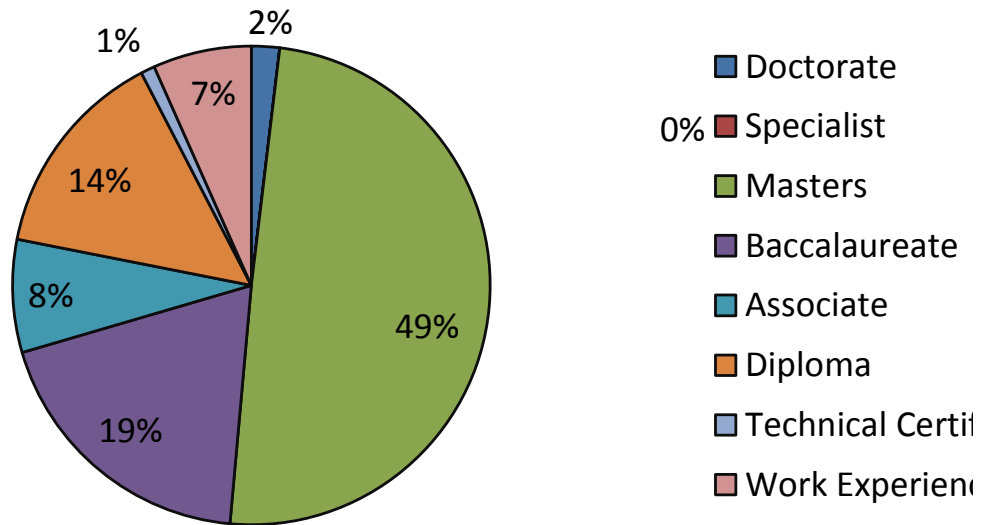


Fall 2013 - FT/PT

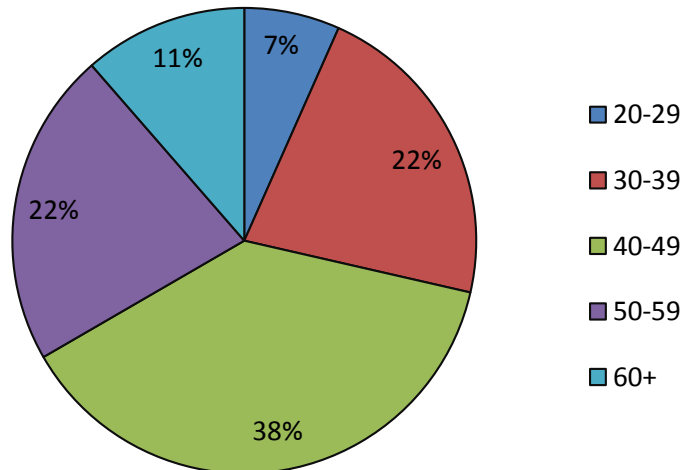
■ Full-Time ■ Part-Time



Fall 2013 - Faculty Highest Earned Degree



Fall 2013 Faculty Age



SECTION VIII

LIBRARY RESOURCES

SECTION VIII: LIBRARY RESOURCES

Services

Reference questions

Ask A Librarian Form Usage			
	FY 2011	AY2012	AY2013
General Question	0	5	15
GALILEO	3	2	5
NetLibrary	13	2	0
Total	16	9	9
Reference Questions	91	448	208

Interlibrary Loans

ILL			
	FY 2011	AY2012	AY2013
Borrowing	44	27	32
Lending	131	132	132
Total	175	159	164

Bibliographic Instruction Summary

FY11

Term	# of Sessions	Attendees
Summer	26	433
Fall	33	823
Winter	17	329
Spring	25	553
Total	101	2138

AY 12

Term	# of Sessions	Attendees
Summer	9	189
Fall	20	451
Winter	18	432
Spring	5	92
Total	52	1,164

AY 13

Term	# of Sessions	Attendees
Summer	6	100
Fall	12	364
Winter	-	-
Spring	10	294
Total	28	758

SECTION VIII: LIBRARY RESOURCES

Resources

Circulation

Transaction Type	Number
Check Outs	1,921
In-House Use	4
Renewals	603
Total	2,528

GALILEO

GALILEO usage, with comparison to four other TCSG colleges

School	Enrollment Fall Semester 2012	Keyword	Full Text	Citations	Logins	Links Chosen	Total
North Georgia	1,984	293,177	11,046	20,680	4,006	6,309	335,218
South Georgia	1,601	131,673	10,765	34,744	1,644	1,685	180,511
Southeastern	1,303	306,679	16,217	50,193	3,717	3,937	380,743
Southwest Georgia	1,190	310,564	17,445	44,989	4,753	4,595	382,346
Altamaha	1,077	310,503	24,460	30,839	2,837	3,166	371,805

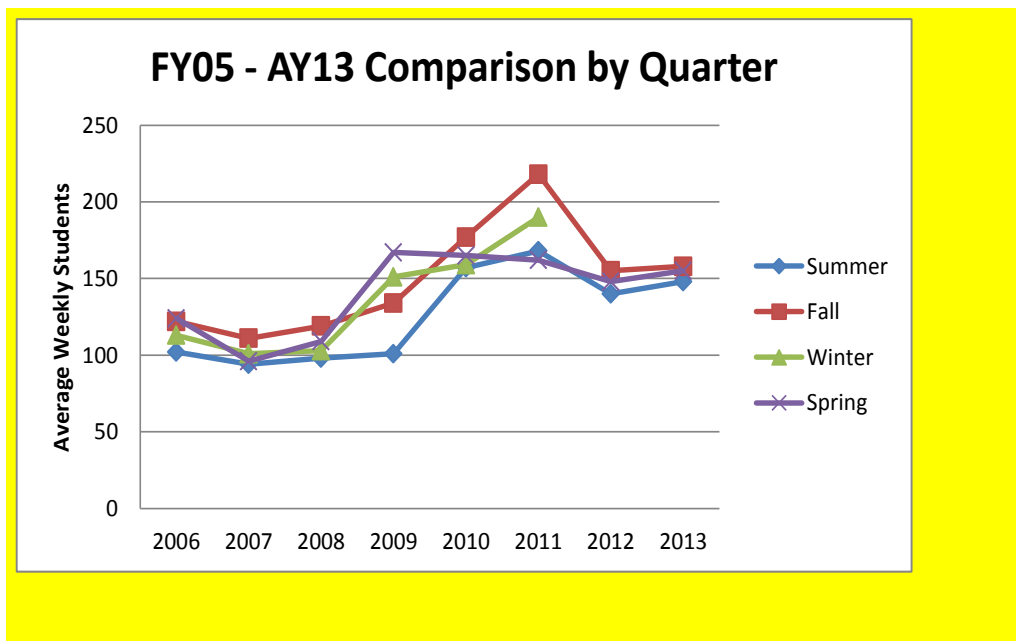
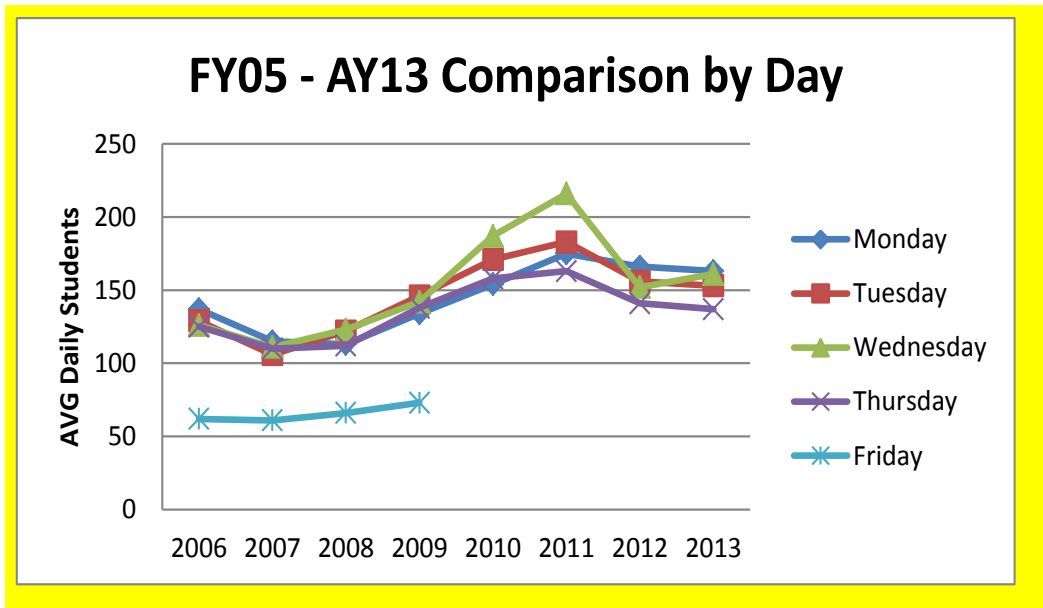
Databases made available through GALILEO, paid for locally.

- Cumulative Index to Nursing and Allied Health Literature (CINAHL)
- Encyclopedia Britannica
- Gale Encyclopedia of Alternative Medicine, 2nd ed.
- Gale Encyclopedia of Espionage, Intelligence and Security
- Gale Encyclopedia of Surgery, a Guide for Caregivers and Patients
- Literature Resource Center (Gale)
- Magill's Medical Guide

SECTION VIII: LIBRARY RESOURCES

Access

8 Year Comparison, Library Attendance, Vidalia



SECTION IX

**CONTINUING EDUCATION
and
ECONOMIC DEVELOPMENT**

SECTION IX: CONTINUING EDUCATION and ECONOMIC DEVELOPMENT**Adult Education**

	FY 2011	AY 2012	AY 2013
Students Served	2,019	1809	1615
Contact Hours	119,925	101,488	96,352
Level Completions	636	777	645
GEDs Awarded	546	589	442

Adult Education Enrollment by County

County	FY 2011	AY 2012	AY 2013
Candler	143	118	134
Emanuel	618	521	470
Jenkins	139	138	150
Johnson	104	127	94
Montgomery	42	40	32
Tattnall	219	195	188
Toombs	459	412	363
Treutlen	295	254	180
Total	2,019	1805	1611

ESL Enrollment by County

County	FY 2011	AY 2012	AY 2013
Candler	4	0	0
Emanuel	5	0	0
Jenkins	0	0	0
Johnson	0	0	0
Montgomery	0	0	0
Tattnall	0	2	4
Toombs	4	2	0
Treutlen	0	0	0
Total	13	4	4

ESL Contact Hours by County

County	FY 2011	AY 2012	AY 2013
Candler	159	0	0
Emanuel	204	0	0
Jenkins	0	0	0
Johnson	0	0	0
Montgomery	0	0	0
Tattnall	0	187	218
Toombs	171	158	0
Treutlen	0	0	0
Total	534	345	218

Source: Ex. Dir. of Adult Education

SECTION IX: CONTINUING EDUCATION and ECONOMIC DEVELOPMENT

Economic Development Services Data

Enrollment (People Served)

Department	FY 2011	AY 2012	AY 2013
Continuing Ed	728	391	585
Conferencing	3,641	5,588	4,727
Community Med/Emergency Training	10,012	10,074	11,792
Contract Training	4,660	3,748	3,613
Total	19,041	19,801	19,117

Revenue (\$)

Department	FY 2011	AY 2012	AY 2013
Continuing Ed	42,353	23,421	19,368
Conferencing	17,937	34,537	26,248
Community Med/Emergency Training	81,549	154,277	121,741
Contract Training	135,300	118,775	116,272
Total	277,139	331,010	283,629

Source: VPEDP

SECTION IX: CONTINUING EDUCATION and ECONOMIC DEVELOPMENT**Quick Start
Companies Served AY 13**

Chicken of the Sea	US Pet
Vidalia Valley	US Energy
Nordson	Giro Pack
HotSet	

**Contract Training
Companies Served AY 13**

VNS	Kiddie Kastle
Georgia HiTech	Telamon
Truax	Bacon EMS
Dot Foods	Crider Inc.
Chicken of the Sea	Hotset
Rotary Corporation	Nordson
Plant Hatch	Giro Pack
Kongsberg	Trane
US Pet	Duramatic
Rayonier	Emanuel County Hospital
Hollaway Day Care	Savannah Luggage
Adam's Run	Tumi
High Cotton Restorations	Ga. Dept. of Corrections
Robin Builders	Ga. Dept. of Labor
Vidalia Valley	
Cintas	
Brewton Parker	
Bethany Nursing	
US Energy	
Rhodes Electric	
McClain, Calhoun, and Associates	
Little Tykes Day Care	
Mayo Clinic	
Meadows Regional	
Toombs EMS	
Meadows Sleep Center	
Ogeechee Steel	
Oxford Industries	

Small Business Assistance Services

Service	FY 2011	AY 2012	AY 2013
Business Startup Kits Distributed	52	39	23
Small Business Contacts	72	65	56
Business Starts	18	14	11

Source: VPEDP

SECTION X

COLLEGE SCORECARD

SECTION X: COLLEGE SCORECARD

Southeastern Technical College **College Performance Funding Measures & Benchmarks** **2014 Projections**

	Reporting Year 2012		Reporting Year 2013		2014
	Projected Results	Actual Results	Projected Results	Actual Results	Projected Results
Technical Education					
1. Retention Rate	69.0%	69.6% 266/382	69.5%	69.2% 182/263	
2. Graduation Rate	54.0%	57.3% 1,276/2,225	55.0%	67.5% 1,279/1,896	
3. Job Placement Rate	85.0%	Not Available	85.0%	Not Available	
4. FTE	1,400	1,377	1,250	1,303	
5. High School Enrollment	250	228	150	225	
Adult Education					
1. NRS Enrollment ABE/ASE/ESL	1,900	1,660	1,880	1,431	
2. Level Completions in ABE, ASE and ESL (NRS Table 4)	NA	47.2% 784/1,660	NA	44.4% 635/1,431	
3. Obtained a GED*	68.0%	75.2% 261/347	67.0%	85.0% 199/234	69.0%
4. Entered Postsecondary*	48.0%	42.5% 17/40	25.0%	8.3% 21/252	25.0%
5. Entered Employment *	51.0%	44.4% 91/205	26.0%	40.7% 107/263	16.0%
Economic Development					
1. Customized Contract Training: Companies Trained	55	80	55	83	
2. Customized Contract Training: Total Trainee Contact Hours	38,000	38,889	38,000	38,710	
Foundation Financial Status					
Funds Raised	N/A		N/A		

*Indicates 2013 is not final
TCSG Data Center Report # DC198 – 08/21/2013